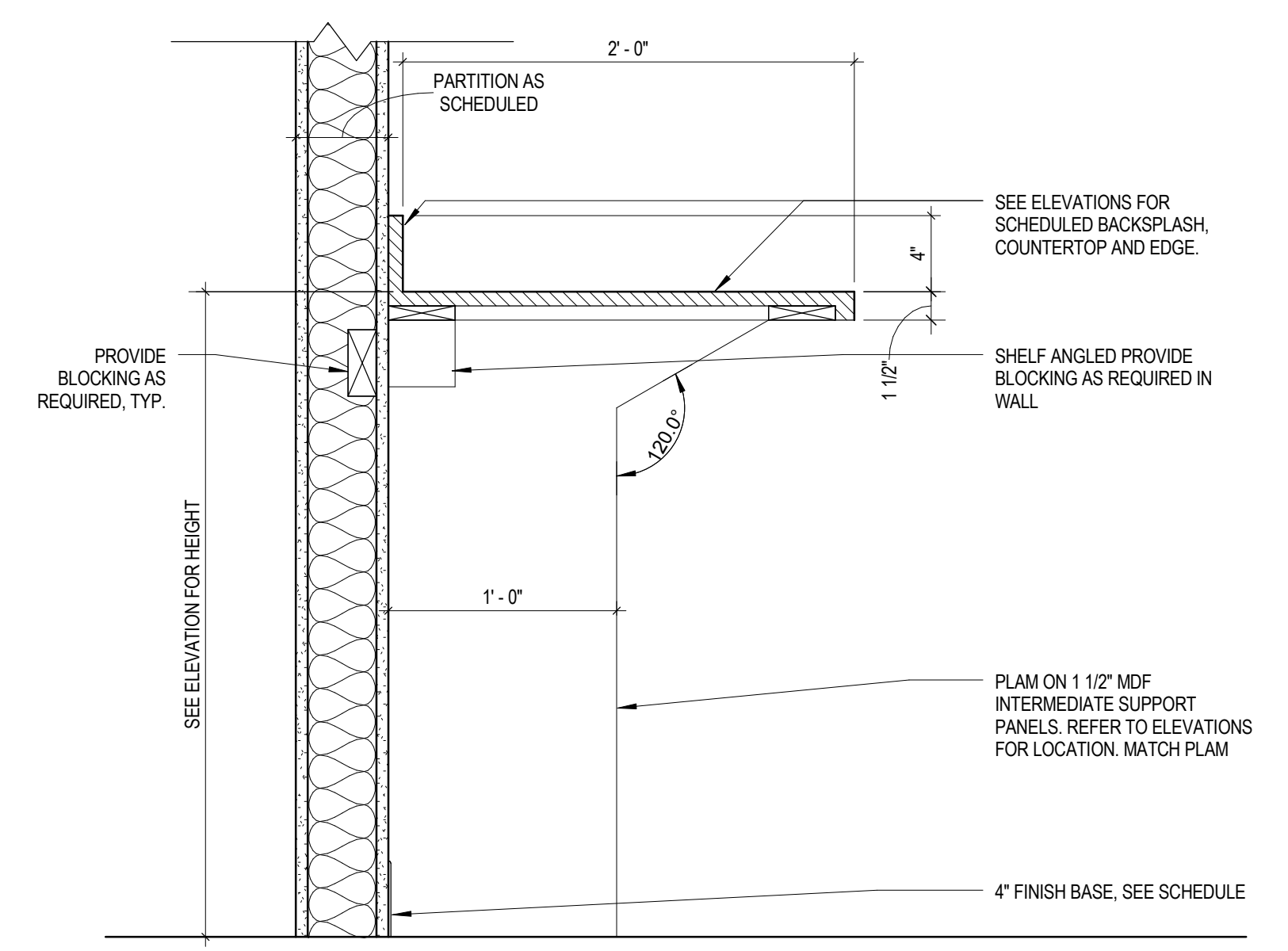
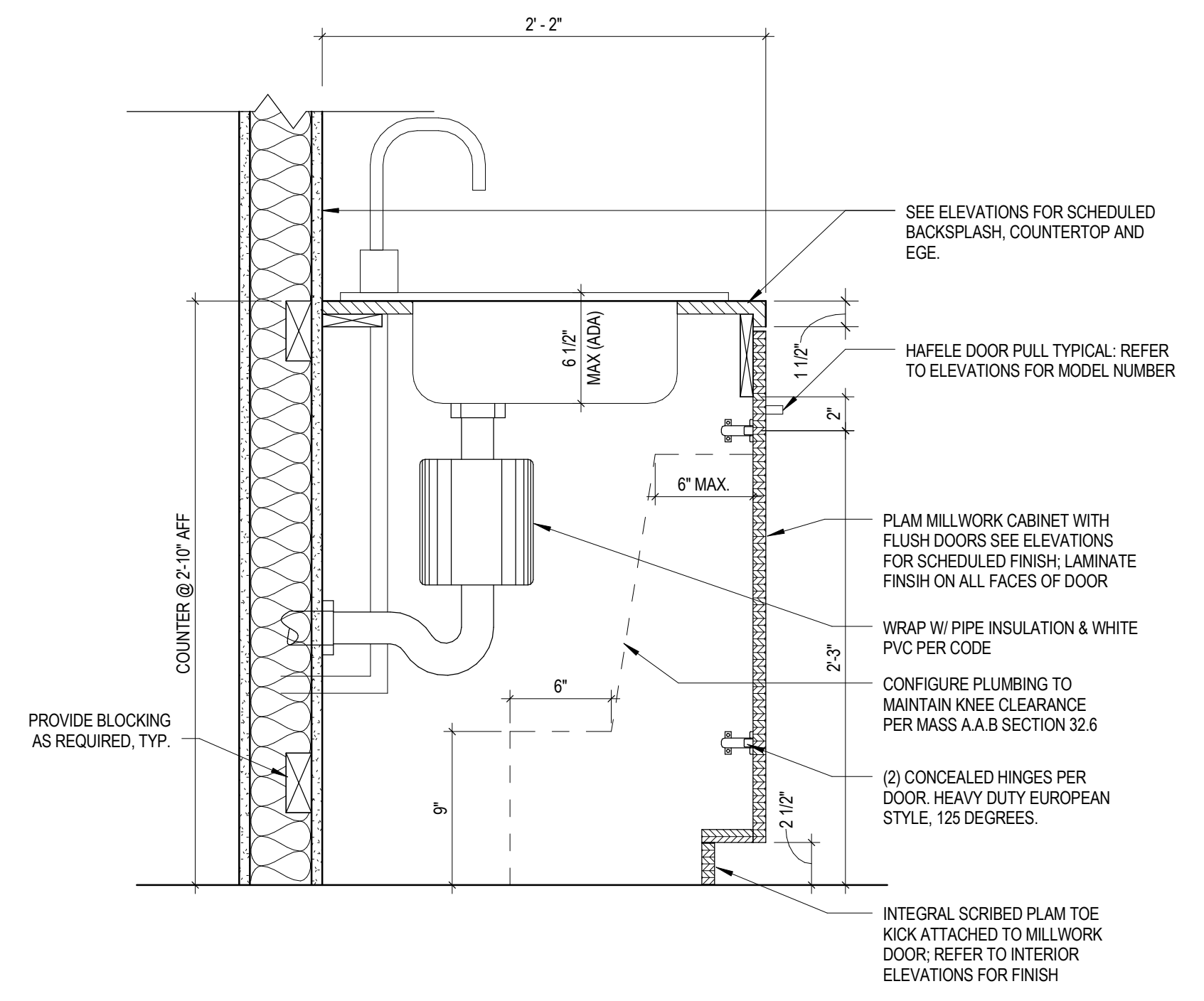


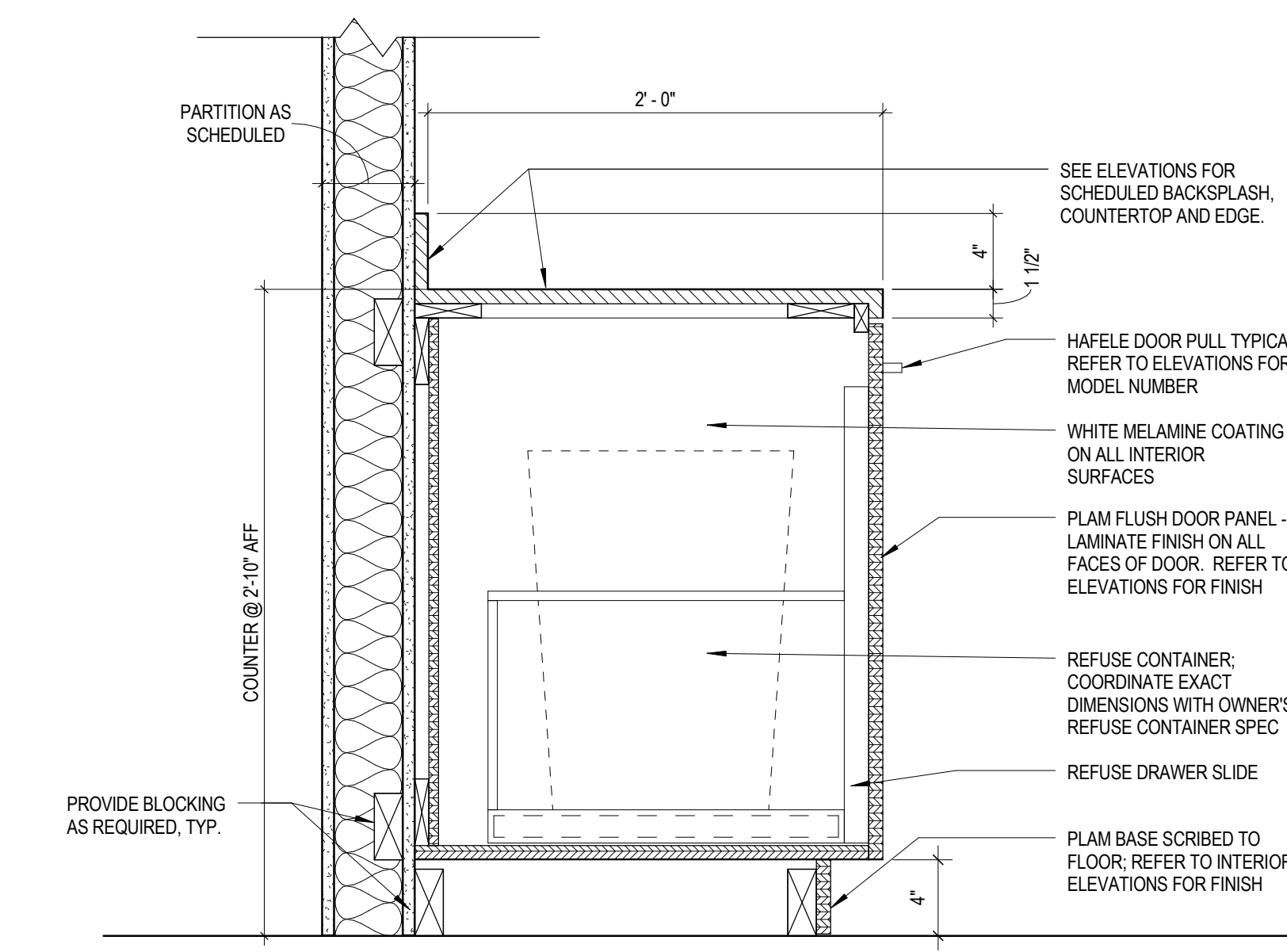
9 OPEN BASE CABINET (EXCEPT PANTRY)  
1 1/2" = 1'-0"



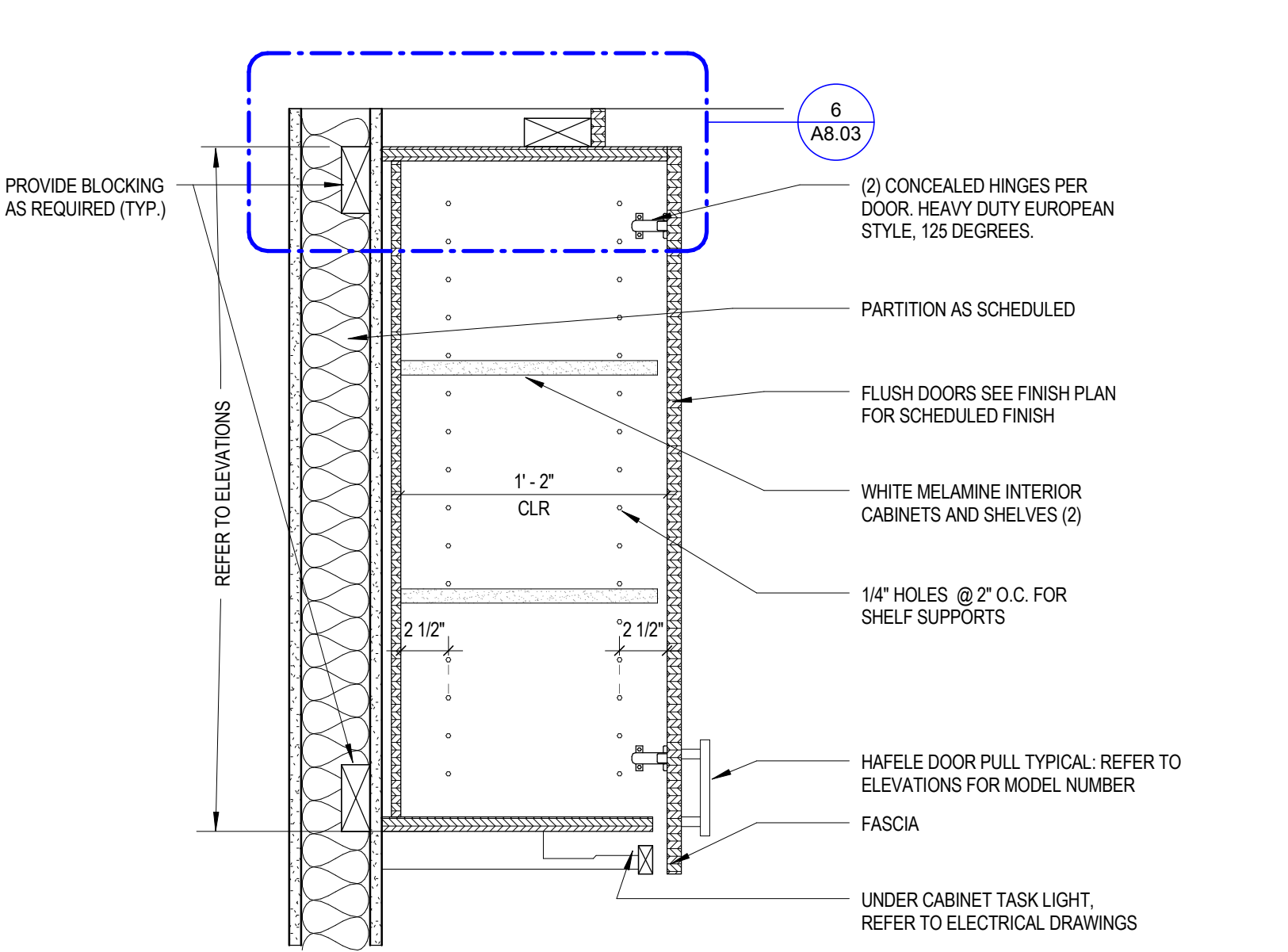
6 COUNTERTOP  
1 1/2" = 1'-0"



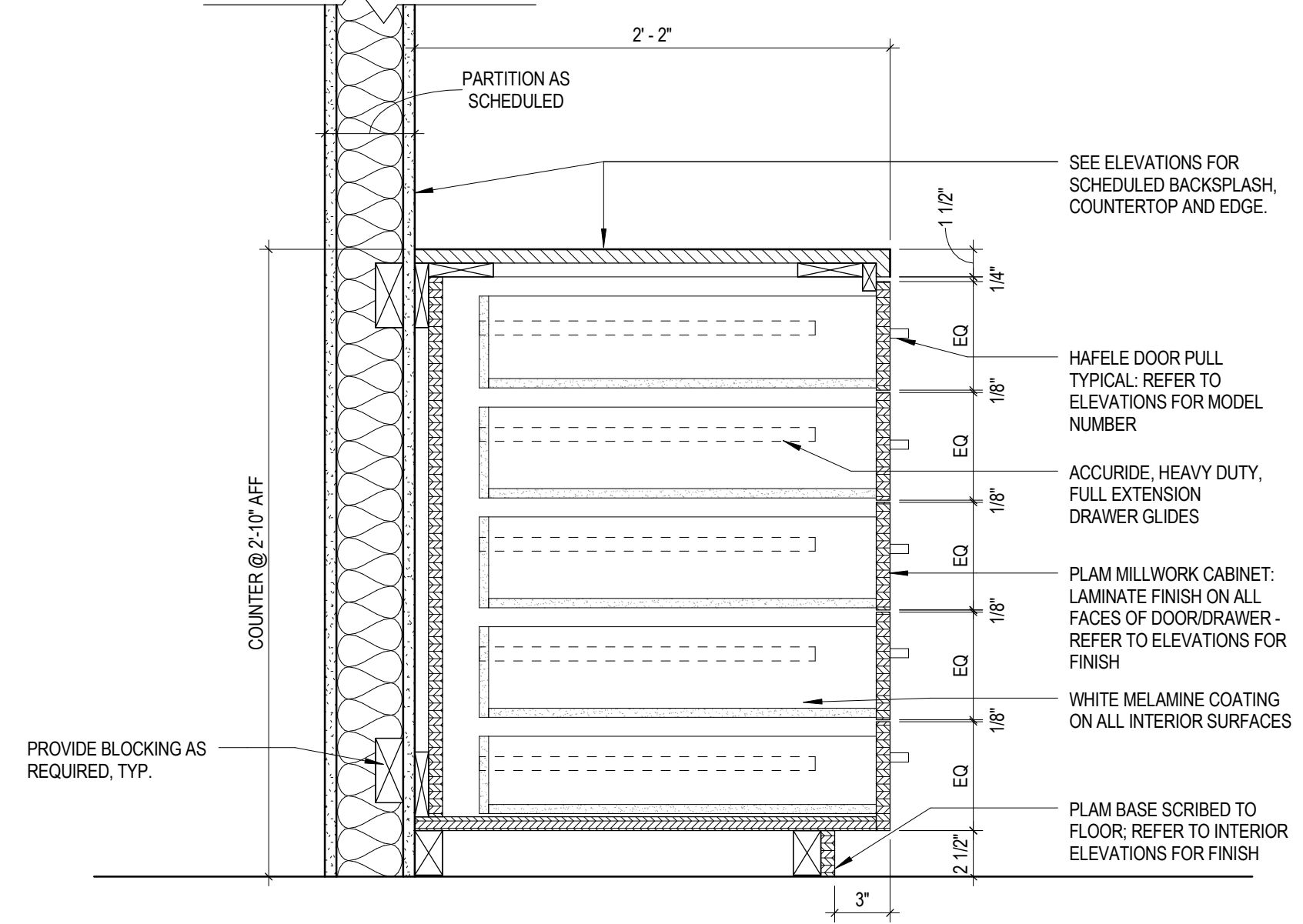
3 PANTRY BASE CABINET - SINK  
1 1/2" = 1'-0"



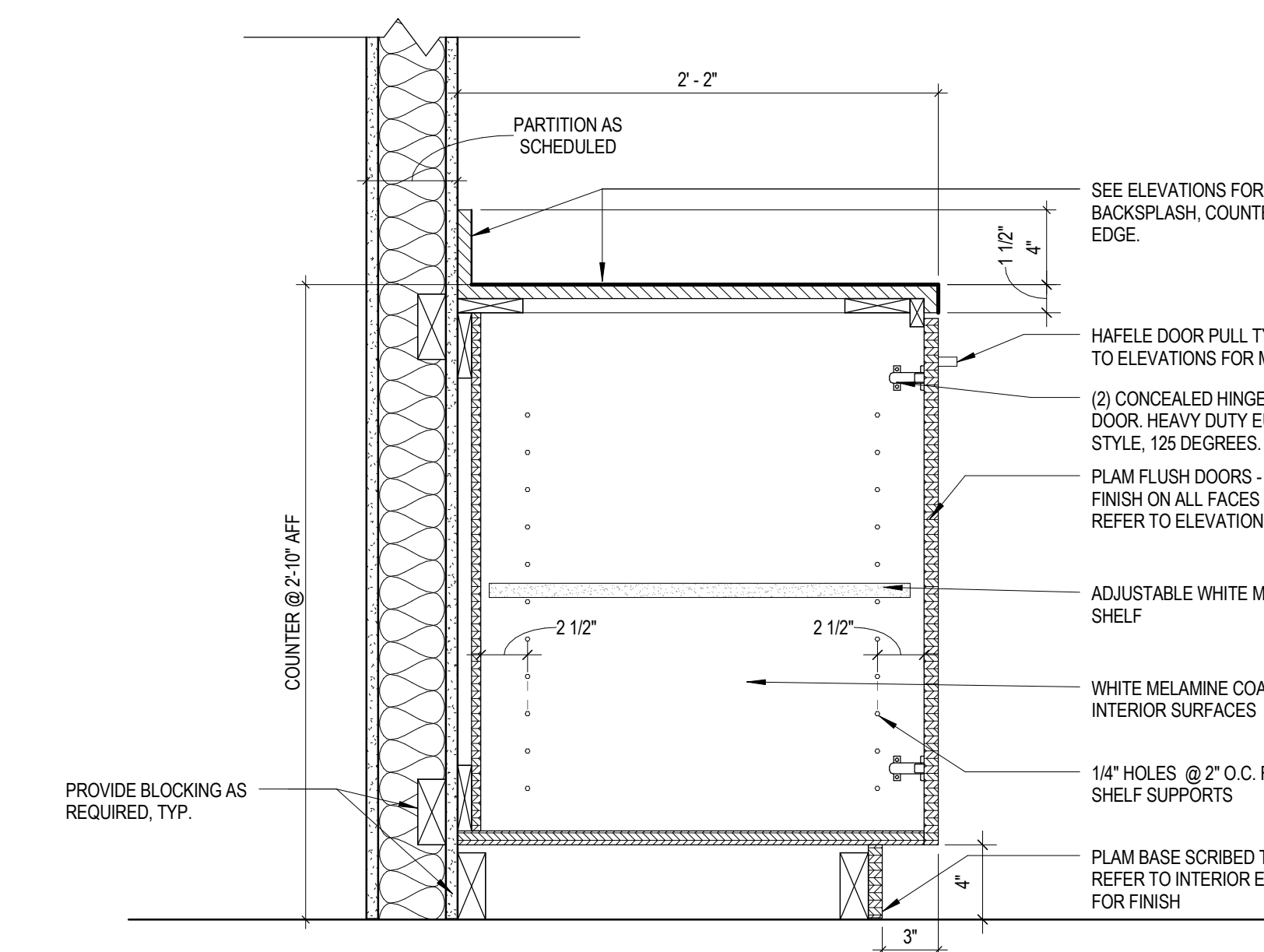
8 TRASH BASE CABINET (EXCEPT PANTRY)  
1 1/2" = 1'-0"



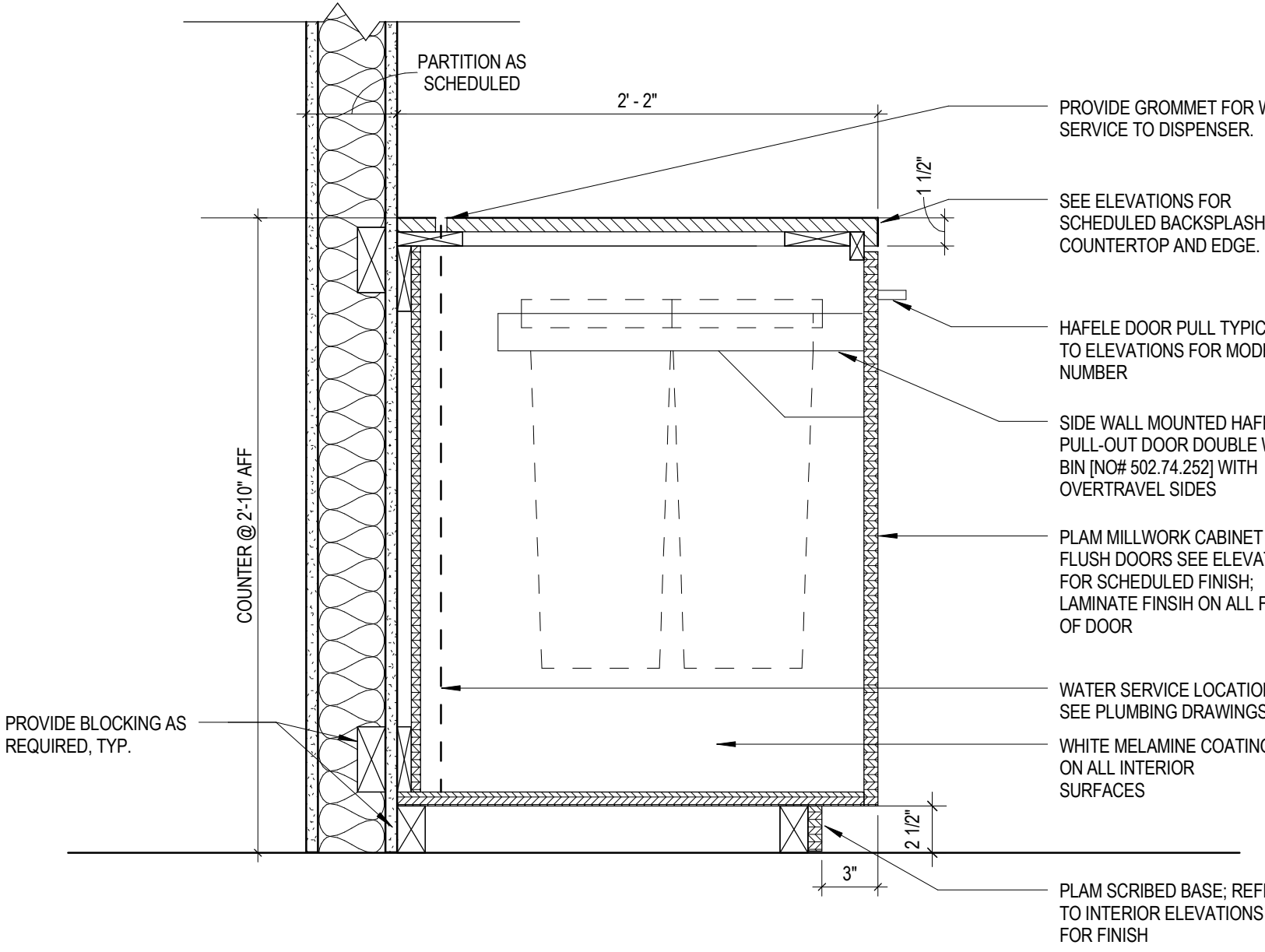
5 OVERHEAD CABINET  
1 1/2" = 1'-0"



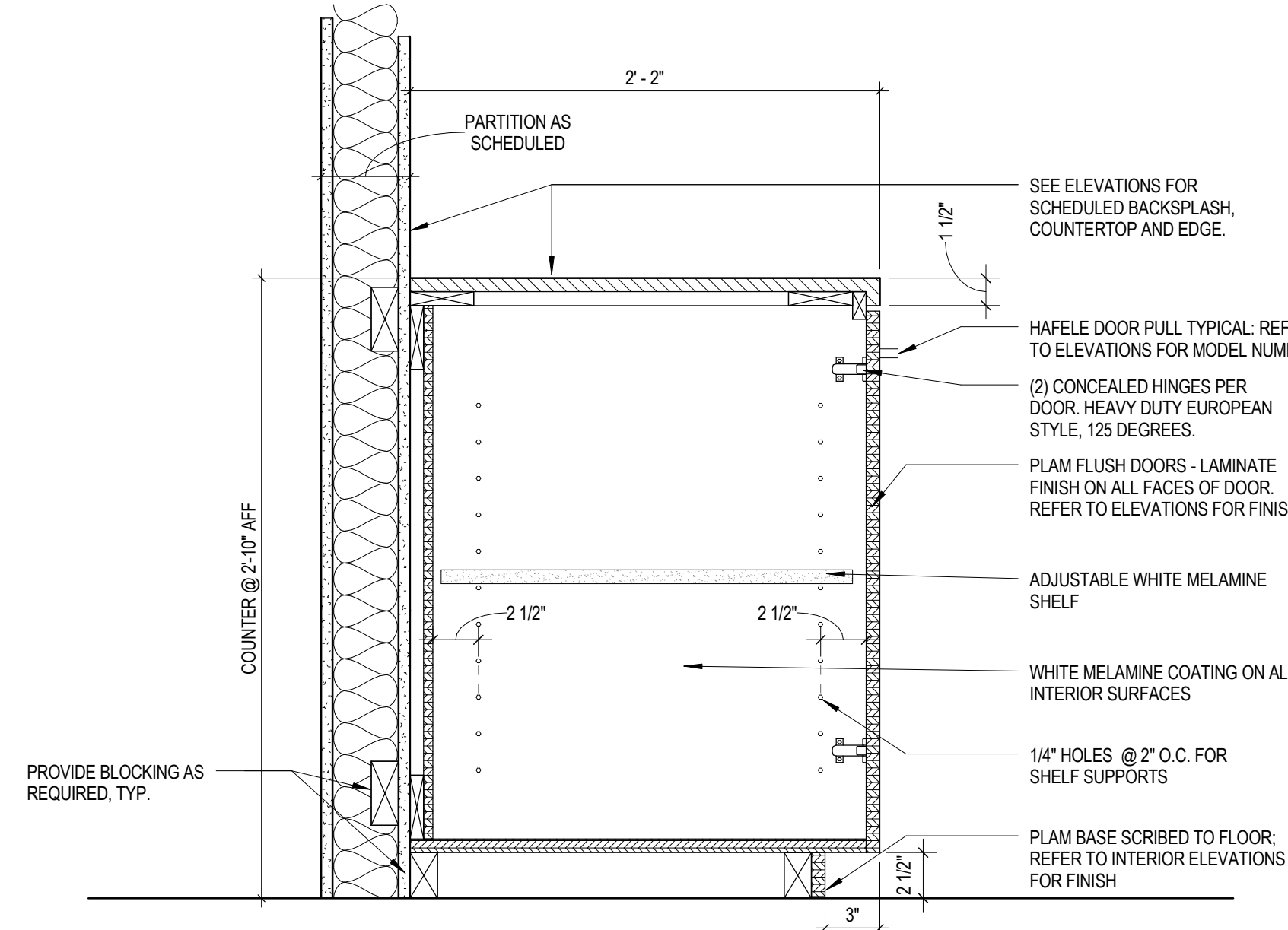
2 PANTRY BASE CABINET - DRAWERS  
1 1/2" = 1'-0"



7 BASE CABINET (EXCEPT PANTRY)  
1 1/2" = 1'-0"



4 TRASH BASE CABINET - PANTRY  
1 1/2" = 1'-0"



1 PANTRY BASE CABINET  
1 1/2" = 1'-0"

REVISIONS

**BANK OF AMERICA - 9TH & 10TH FLOORS**

BANK OF AMERICA  
1 MONUMENT SQUARE  
Portland, ME

TITLE  
MILLWORK DETAILS

DATE JOB NO.  
May 11, 2015 15051.00

DRAWING NO. **A8.01**

ISSUED FOR CONSTRUCTION

C:\Revit\2015 Local Files\ME PORTLAND\_1 MONUMENT SQ\_09-10\_FP\_BAC\_CENTRAL\_mckinnon.rvt

DYER BROWN & ASSOCIATES, INC. ©2015 ALL RIGHTS RESERVED - PLOTTED: 5/11/2015 2:46:00 PM