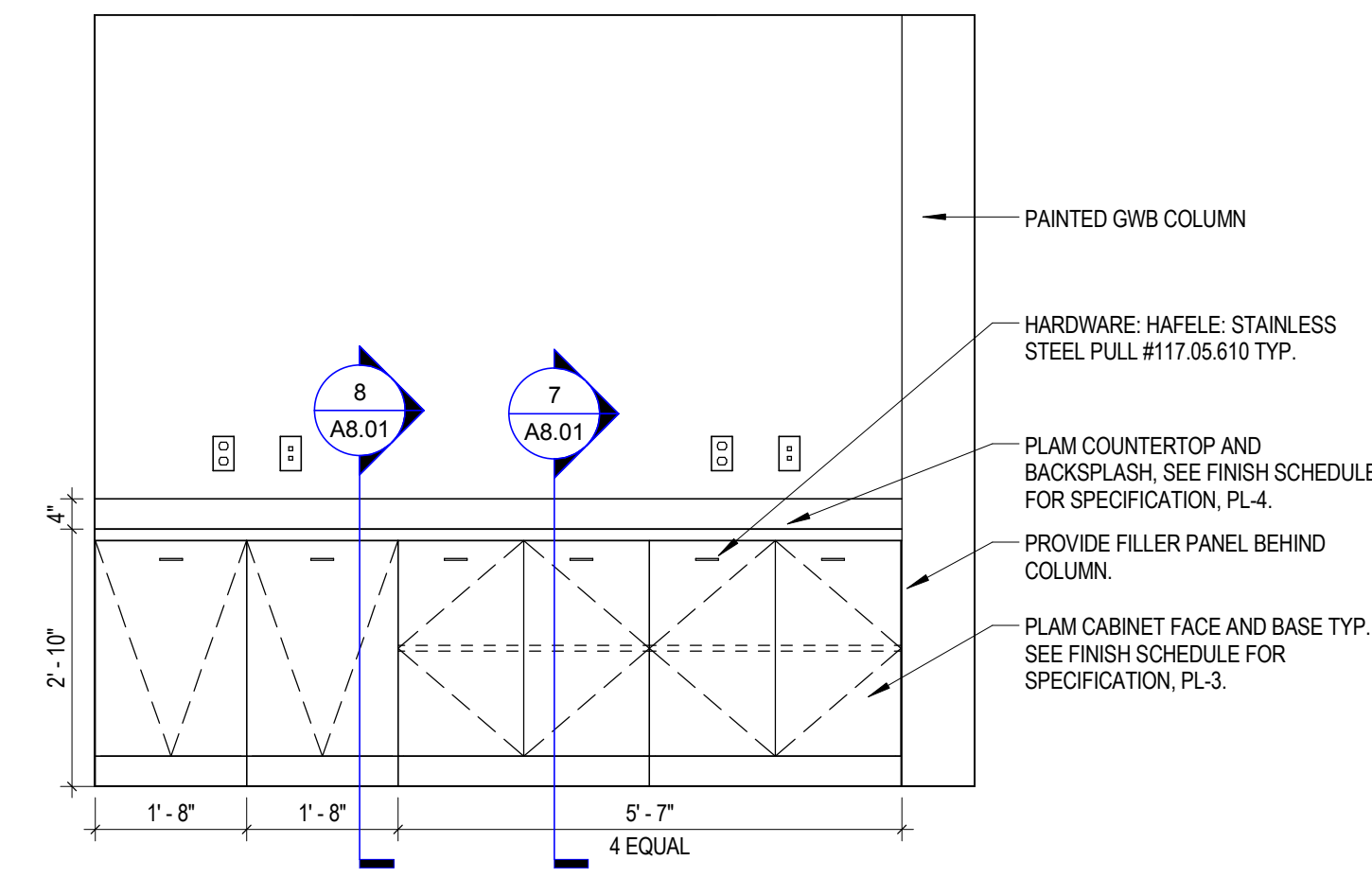
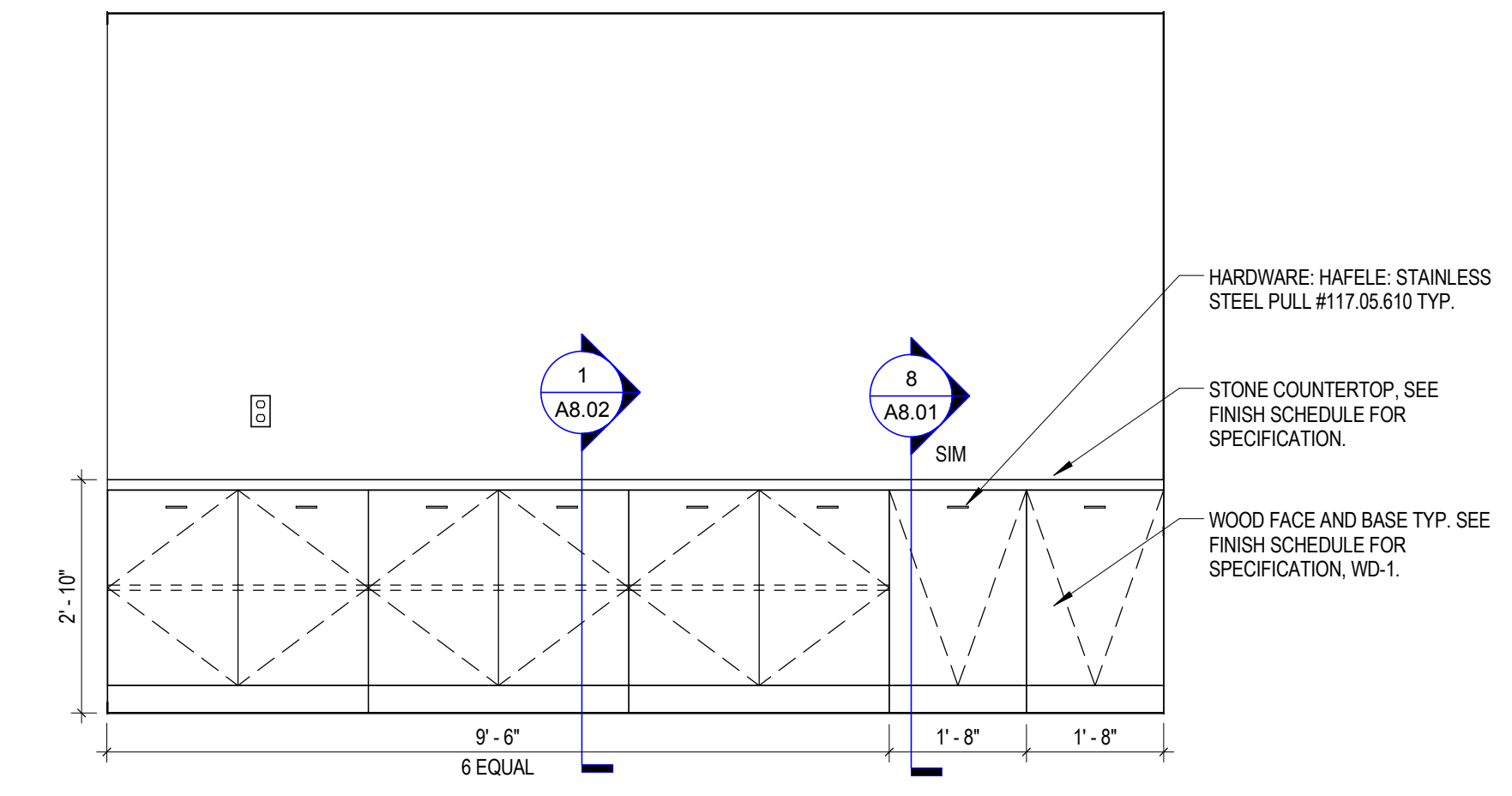




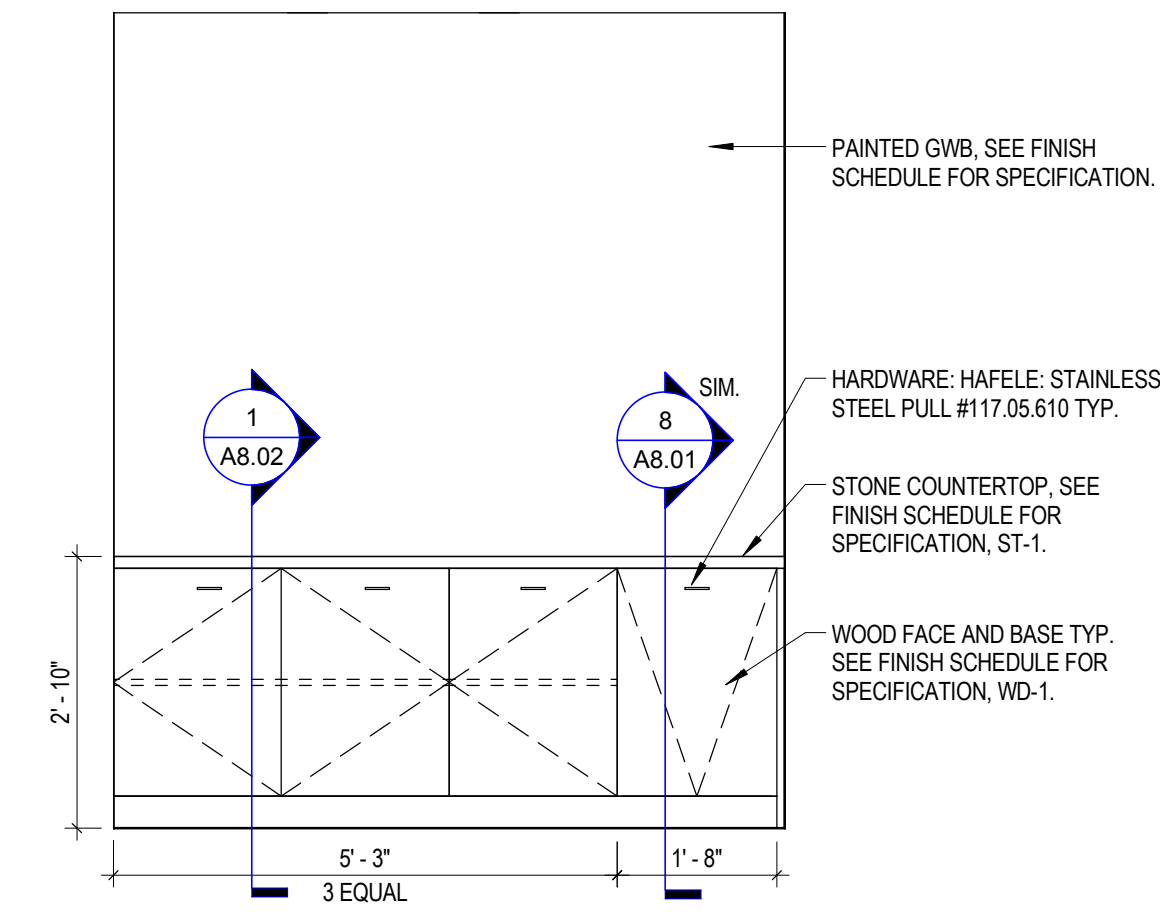
*Brent D. Zeigler*



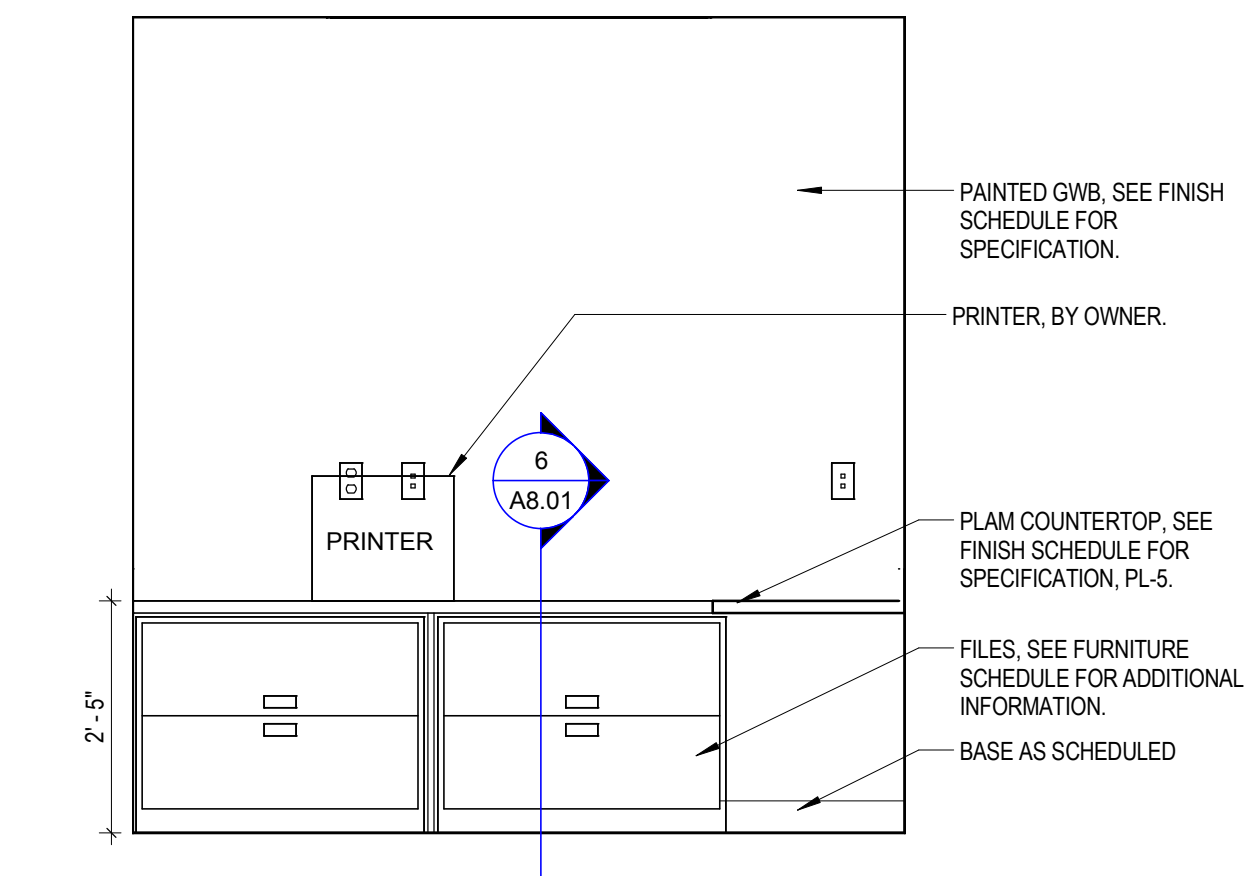
8 WORK ROOM 1025 ELEVATION  
1/2" = 1'-0"



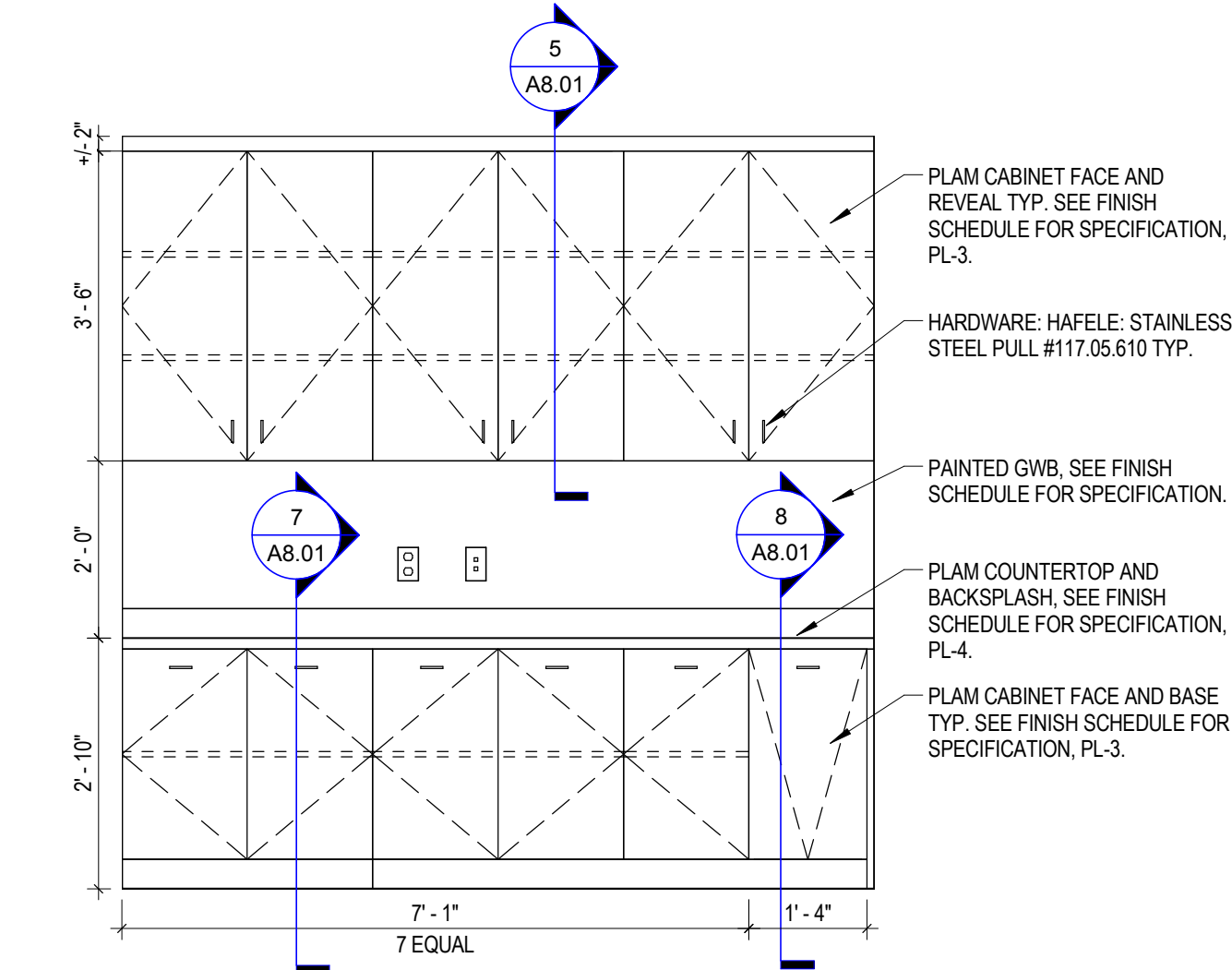
4 CONFERENCE 1003 BUILT-IN CREDENZA ELEVATION  
1/2" = 1'-0"



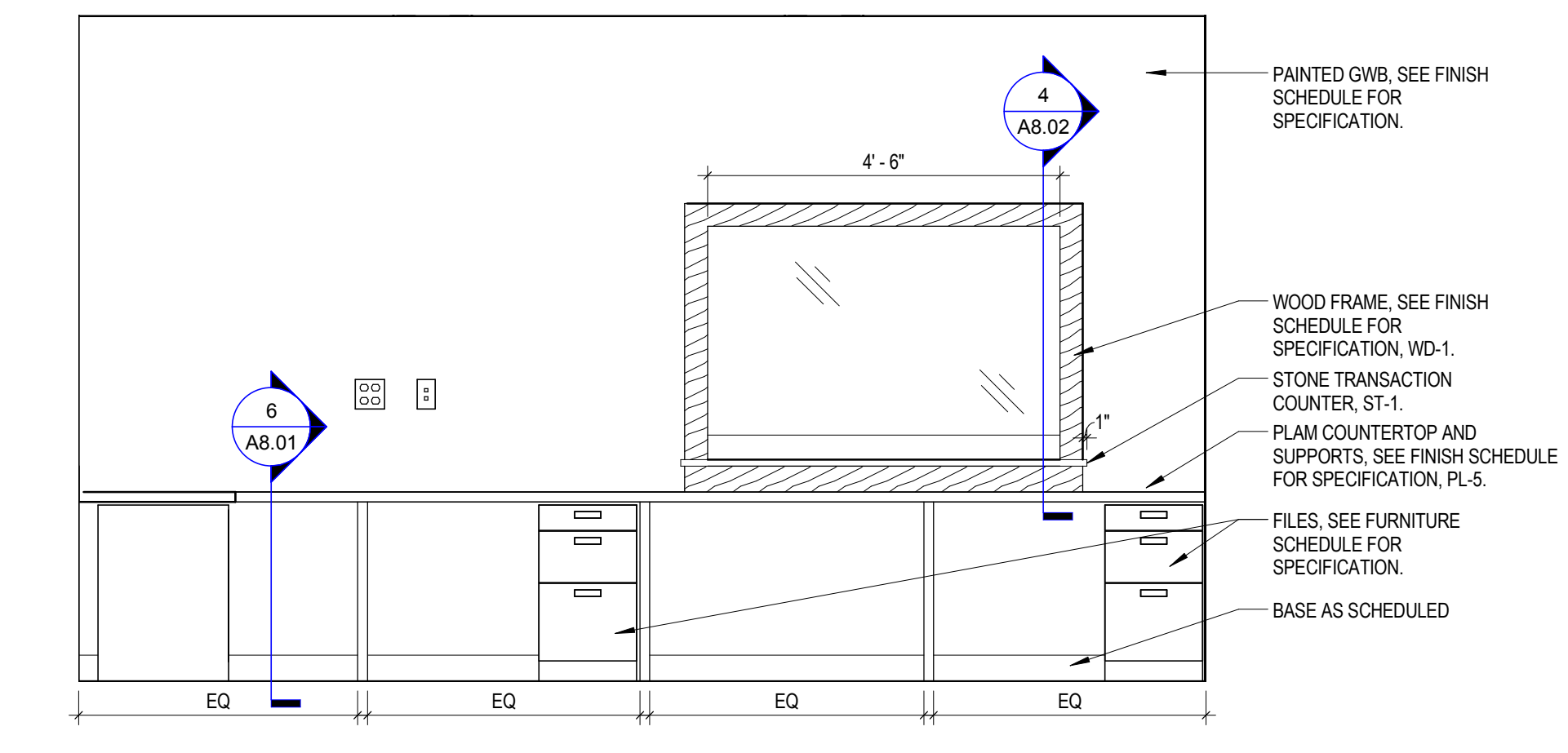
7 MULTI-PURPOSE ROOM 1038 CREDENZA ELEVATION  
1/2" = 1'-0"



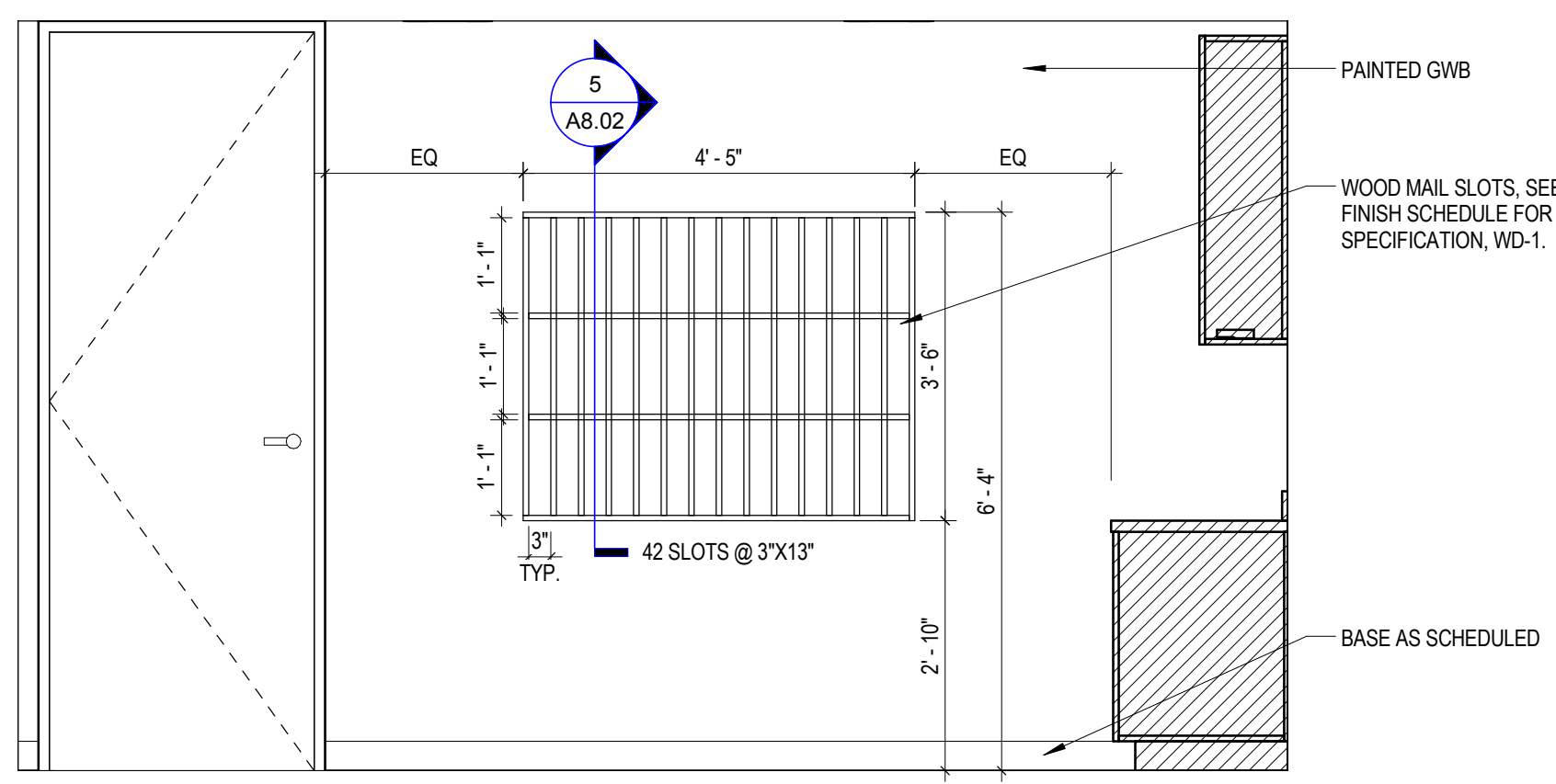
3 RECEIPT/OPS 1005 ELEVATION C  
1/2" = 1'-0"



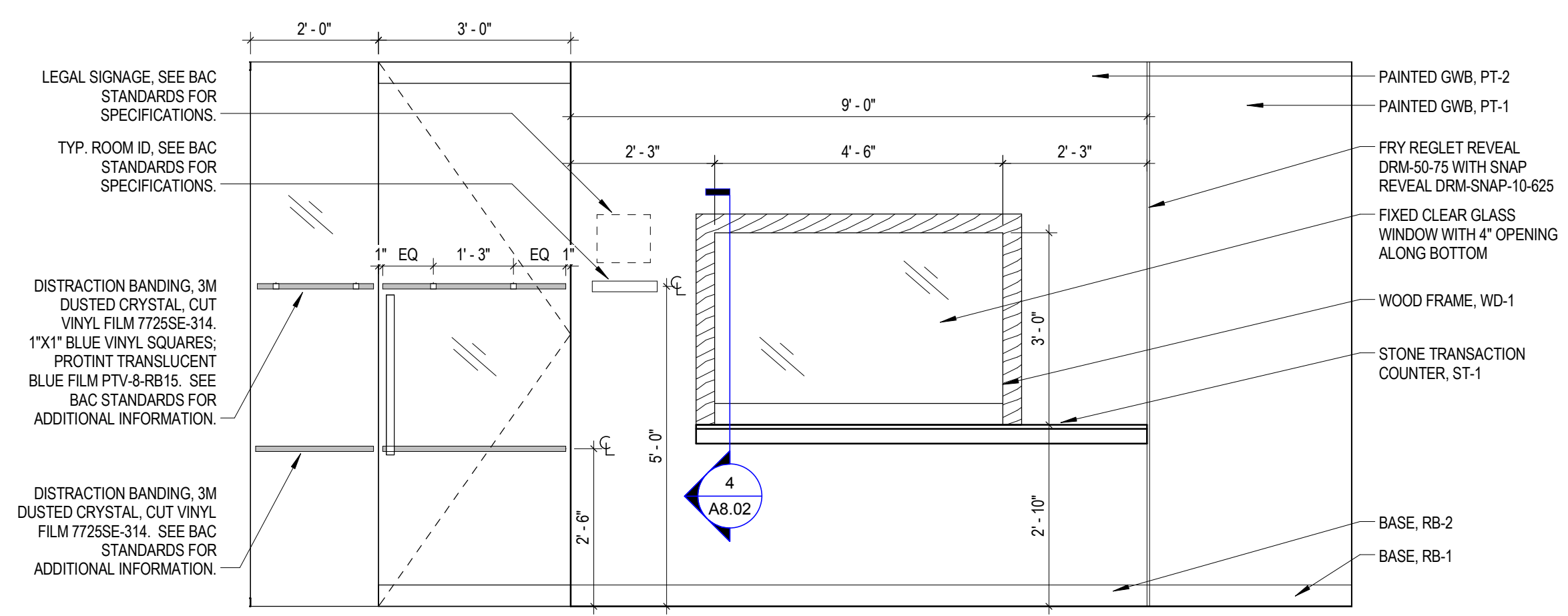
6 MAIL ROOM 1006 ELEVATION B  
1/2" = 1'-0"



2 RECEIPT/OPS 1005 ELEVATION B  
1/2" = 1'-0"



5 MAIL ROOM 1006 ELEVATION A  
1/2" = 1'-0"



1 RECEIPT/OPS 1005 ELEVATION A  
1/2" = 1'-0"

REVISIONS

**BANK OF AMERICA - 9TH & 10TH FLOORS**

BANK OF AMERICA  
1 MONUMENT SQUARE  
Portland, ME

TITLE  
INTERIOR ELEVATIONS

DATE May 11, 2015  
JOB NO. 15051.00

DRAWING NO. **A7.02**

ISSUED FOR CONSTRUCTION