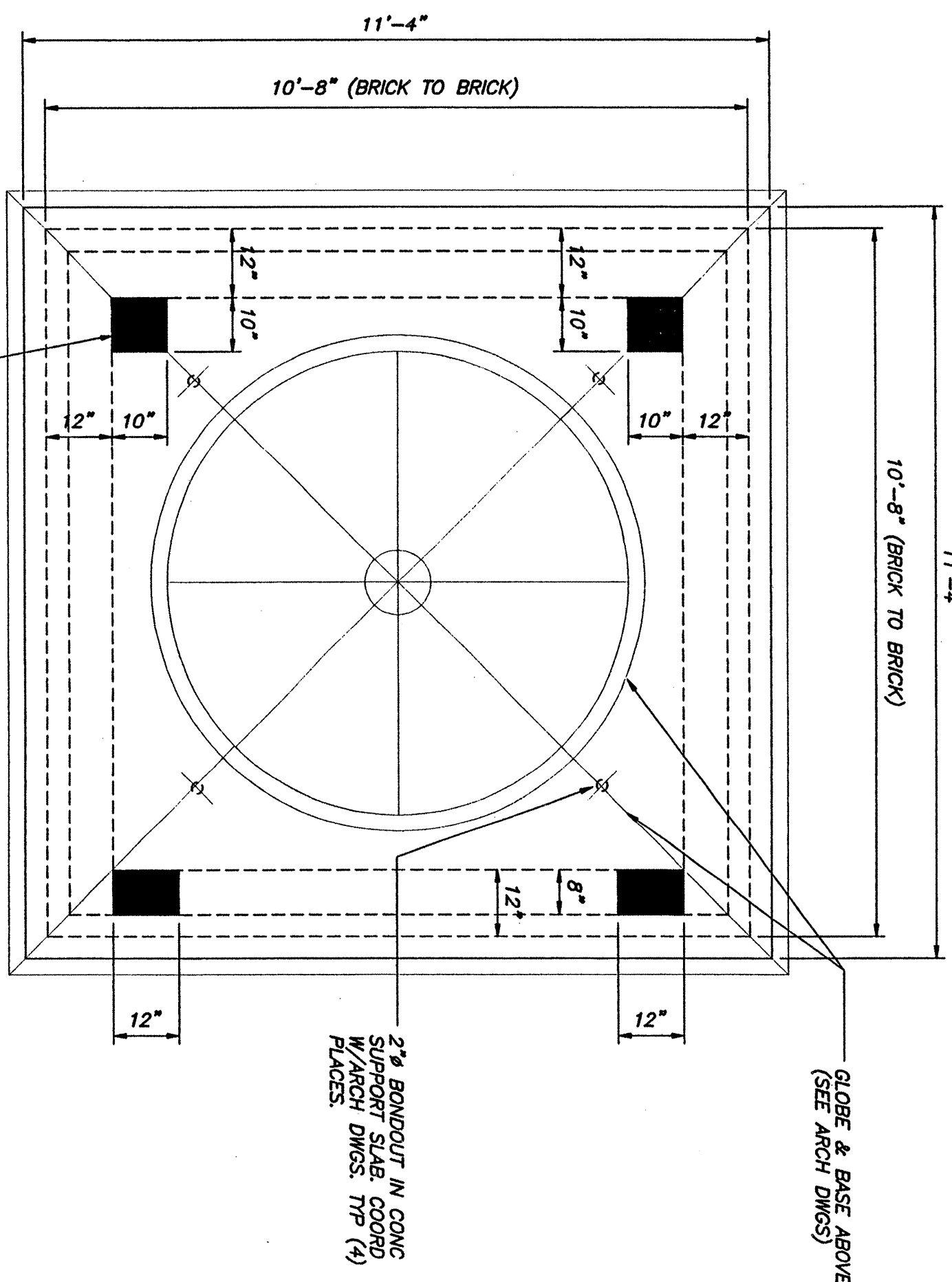
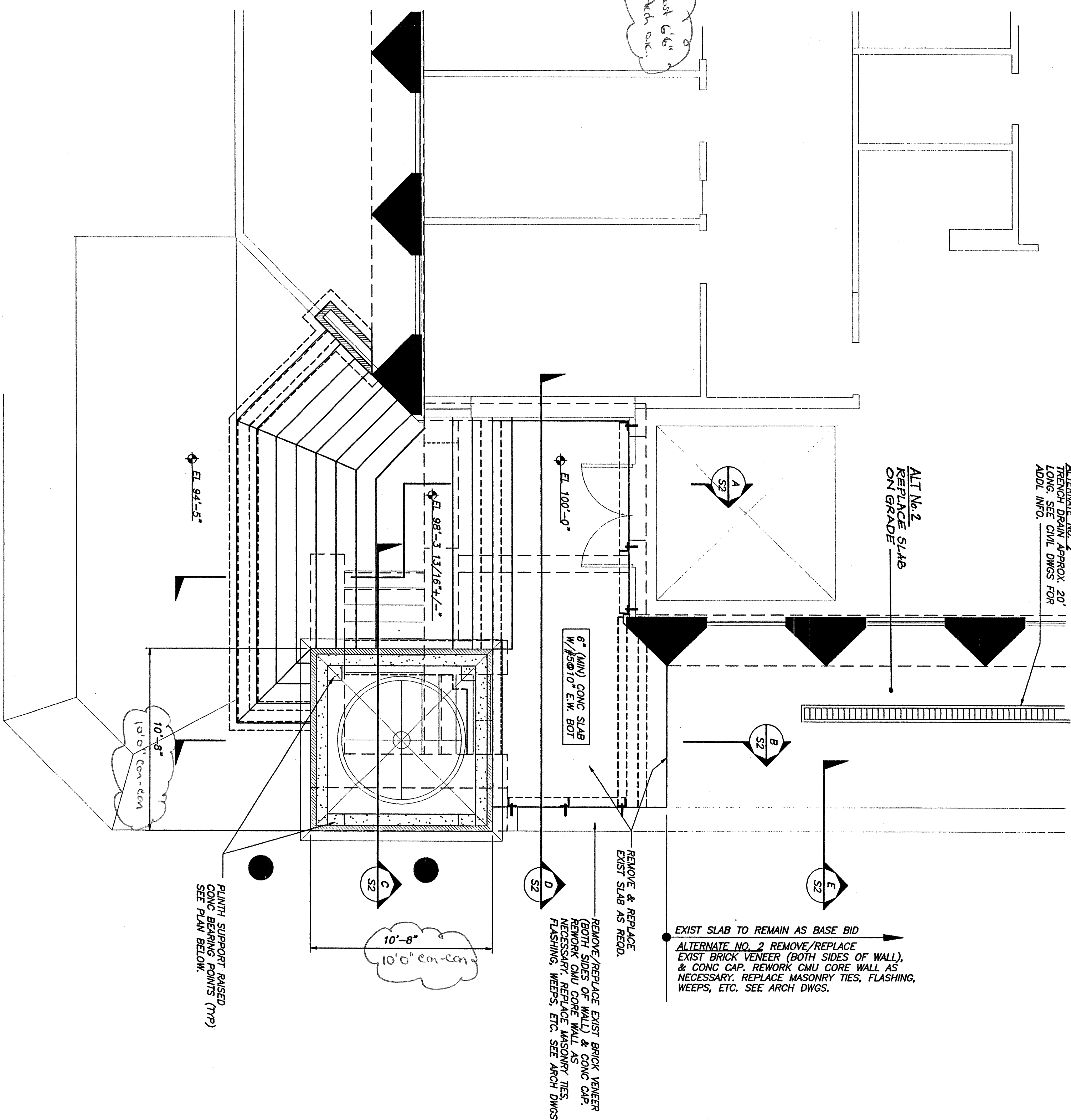


LOWER FOUNDATION PLAN  
1/4"=1'-0"

- NOTES:
1. FOR EXTENT OF DEMOLITION OF EXIST FOUNDATIONS ETC. SEE ARCH DWGS.
  2. ALL DIMENSIONS AND ELEVATIONS TO BE VERIFIED IN THE FIELD BY THE GENERAL CONTRACTOR.



PLINTH SUPPORT SLAB BEARING POINTS PLAN  
1/4"=1'-0"



ENTRANCE PLAN  
1/4"=1'-0"

- NOTES:
1. FOR EXTENT OF DEMOLITION OF EXIST FOUNDATIONS ETC. SEE ARCH DWGS.
  2. ALL DIMENSIONS AND ELEVATIONS TO BE VERIFIED IN THE FIELD BY THE GENERAL CONTRACTOR.

- CONCRETE NOTES:
1. CONCRETE WORK SHALL CONFORM TO BUILDING CODE REQUIREMENTS FOR REINFORCED CONCRETE (ACI 318 - 95) AND SPECIFICATIONS FOR STRUCTURAL CONCRETE (ACI 308-3) CORRES ARE AVAILABLE FROM AMERICAN CONCRETE INSTITUTE (ACI) PHONE 913-542-2800
  2. GENERAL CONTRACTOR SHALL HAVE AVAILABLE ON SITE AT ALL TIMES A COPY OF ACI FIELD REFERENCE MANUAL, SP-15.
  3. CONCRETE SHALL BE CONTROLLED CONCRETE, PROPORTIONED, MIXED, AND PLACED IN THE PRESENCE OF A REPRESENTATIVE OF AN APPROVED TESTING AGENCY.
  4. CONCRETE COMPRESSIVE STRENGTH AT 28 DAYS SHALL BE: 3,000 PSI @ WALLS & FTGS. W/C RATIO 0.45, AIR 4% ± 1%, SLUMP 4" ± 1".
  5. CONCRETE SHALL NOT BE PLACED IN WATER OR ON FROZEN GROUND.
  6. PROVIDE PVC SLEEVES WHERE PIPES PASS THROUGH EXTERIOR CONCRETE WALLS, BEAMS OR SLABS.
  7. REINFORCING BARS SHALL CONFORM TO ASTM A615 GRADE 60 DEFORMED BARS AND SHALL BE DEVELOPED, FABRICATED AND PLACED IN ACCORDANCE WITH ACI 318 LATEST EDITION.
  8. WELDED WIRE FABRIC SHALL CONFORM TO ASTM A-185 AND BE PROVIDED IN FLOOR SHEETS.
  9. FIBER REINFORCEMENT SHALL BE TYPE III SYNTHETIC VIRGIN HOMO-POLYMER POLYPROPYLENE FIBERS CONFORMING TO ASTM C1116.
  10. COMPLETE SHOP DRAWINGS AND SCHEDULES OF ALL REINFORCING STEEL SHALL BE PREPARED BY THE CONTRACTOR, PROVIDE AND SCHEDULE ON SHOP DRAWINGS THE NECESSARY ACCESSORIES TO REINFORCEMENT, INCLUDING: 1. SCHEDULING OF REINFORCEMENT TO SLAB BARS, CONTINUOUS AND 3-4 O.C.; BEAM BOLSTERS AT 5'-0" O.C.
  11. REINFORCEMENT SHALL BE CONTINUOUS AROUND CORNERS AND AT INTERSECTIONS. PROVIDE LAPPED BARS AT NECESSARY SPICES OR FOR ALL REINFORCING AS SHOWN ON TABLE - DWG 32.
  12. MINIMUM CONCRETE PROTECTIVE COVERING FOR REINFORCEMENT, UNLESS NOTED OTHERWISE, SHALL BE AS FOLLOWS:
 

A) SURFACES CAST AGAINST EARTH	3"
B) FORMED SURFACES EXPOSED TO WEATHER	1.5"
C) BARS 5/8" DIAMETER WIRE, AND SMALLER	2"
D) THROUGH #11 BARS	2"
E) SURFACES EXPOSED TO WEATHER	1.5"
F) WALLS, JOISTS #11 BARS AND SMALLER	1.5"
G) BEAMS, GIRDERS, AND COLUMNS, ALL REINFORCING	1.5"
  13. WELDING OF REINFORCEMENT IS NOT PERMITTED.
  14. FOR ALL OPENINGS IN CONCRETE WALLS AND SLABS, PROVIDE SUPPLEMENTAL REINFORCING AROUND OPENING AS SHOWN ON THE CONTRACT DOCUMENTS TYPICAL DETAILS.
  15. CONSTRUCTION JOINTS ARE NOT SHOWN. PROPOSED LOCATIONS OF CONSTRUCTION JOINTS AND CONTROL JOINTS AND CONCRETE PLACING SEQUENCE SHALL BE SUBMITTED TO THE STRUCTURAL ENGINEER FOR REVIEW PRIOR TO PREPARATION OF THE REINFORCEMENT SHOP DRAWINGS.
  16. ANCHOR BOLTS SHALL BE HEAVY DUTY BOLTS CONFORMING TO ASTM A307 UNLESS NOTED OTHERWISE ON DRAWINGS.
  17. ALL GROUT BENEATH BASE PLATES & BEARING PLATES SHALL BE 3"-SHARP 5000-PSI NON-SHANK GROUT BY U.S. GROUT CORP.
  18. INSTALLATION OF REINFORCEMENT SHALL BE COMPLETED AT LEAST 24 HOURS PRIOR TO THE SCHEDULED CONCRETE PLACEMENT. NOTIFY THE ARCHITECT AND STRUCTURAL ENGINEER OF COMPLETION AT LEAST 24 HOURS PRIOR TO THE SCHEDULED COMPLETION OF THE INSTALLATION OF REINFORCEMENT.
  19. CONCRETE ANCHORS SHALL BE POWERGRAB ADHESIVE ANCHORS BY POWERGRAB, NEW ROCHESTER, NY (914) 235-8300.
  20. CONCRETE BEARING PLATES SHALL BE MULTI-WOUND HIGH DENSITY PLASTIC, TO DIMENSIONED HARKNES, KORDLANSKY OR EQUAL.

ENTRANCE AND LOBBY RENOVATIONS  
ONE MONUMENT SQUARE  
PORTLAND, MAINE  
FOR FINARD & COMPANY  
BURLINGTON, MASSACHUSETTS

ARCHITECTURE  
INTERIOR DESIGN  
PLANNING  
PORTARCHITECT  
THE MILLYARD  
700 STATE STREET EXTENSION  
NASHUA, NEW HAMPSHIRE 03060  
603-882-1545  
603-881-3422 FAX  
49 DARTMOUTH STREET  
PORTLAND, ME 04101  
207-753-1099  
207-775-2694 FAX  
COPYRIGHT 2000  
PJT Architects  
All rights reserved. No part of this publication may be reproduced, stored in a retrieval system, or transmitted, in any form or by any means, electronic, mechanical, photocopying, recording, or by any information storage and retrieval system, without prior written permission from PJT Architects.

PALE OF MAINE  
PROFESSIONAL SEAL  
BECKER  
ARCHITECT  
1/25/00  
DRAWN: CJK  
APP: [blank]  
SCALE: AS NOTED  
INSTR: [blank]  
CONSTRUCTION: 05/26/00  
TITLE: ENTRANCE PLANS  
GENERAL NOTES  
AND DETAILS  
SHEET: 51