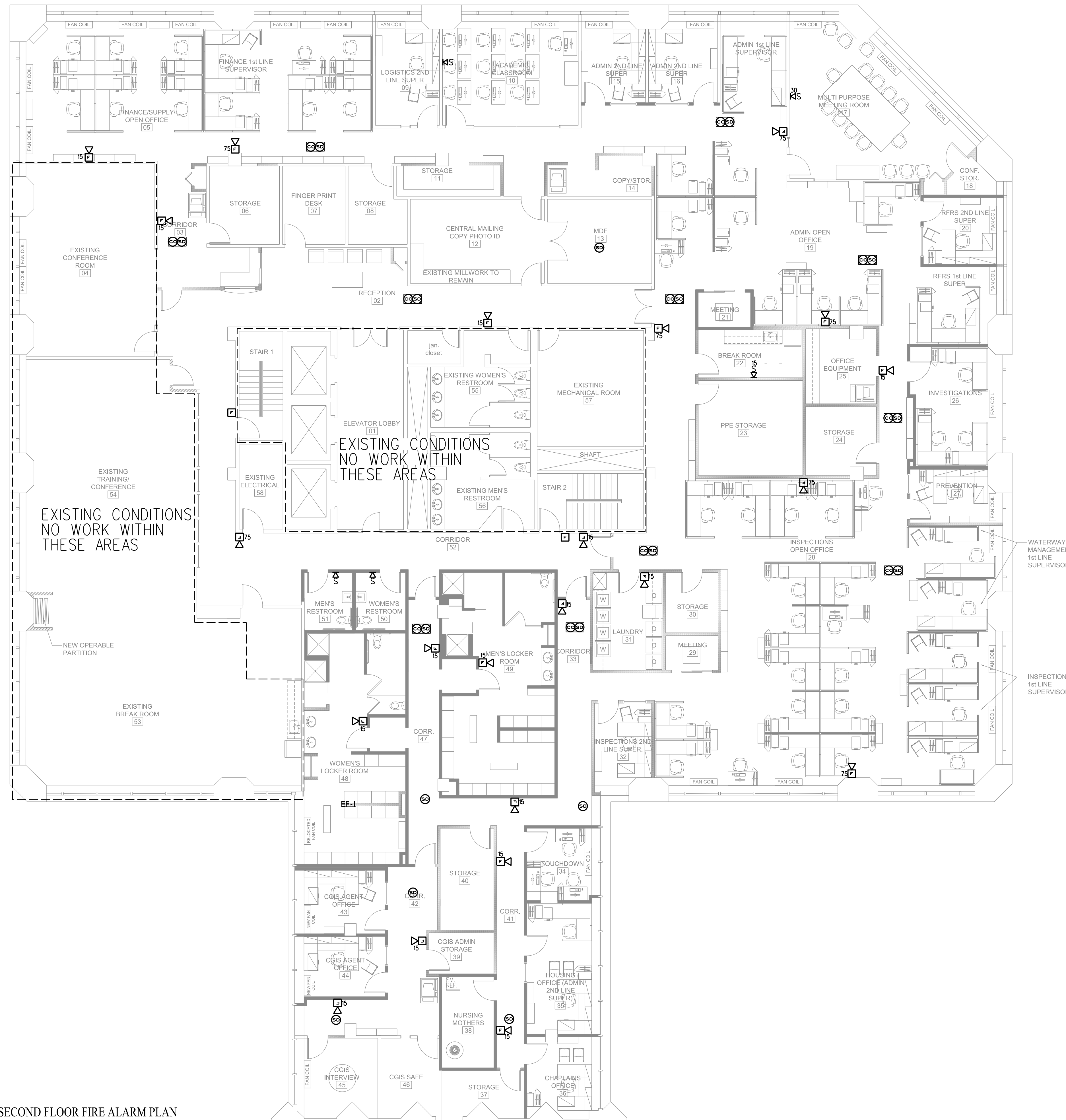


TEMPLE STREET

CONGRESS STREET

FEDERAL STREET



GENERAL FIRE ALARM NOTES:

1. NOT ALL SYMBOLS INDICATED IN THE LEGEND APPEAR ON THE DRAWINGS. COORDINATE WORK ACCORDINGLY. COMPLY WITH SPECIFICATIONS.
2. ALL WORK SHALL COMPLY WITH NFPA70, NFPA72, NFPA101 & ALL FEDERAL, STATE & LOCAL REGULATIONS.
3. ALL PENETRATIONS THROUGH FLOORS, RATED WALLS AND PARTITIONS SHALL BE SEALED WITH UL APPROVED FIRE SEALANT MATERIAL TO MAINTAIN FIRE RATING FOR THE SEPARATION.
4. ALL ENCLOSURES, CONDUIT BODIES AND THEIR COVERS CONTAINING FIRE ALARM SYSTEM CONDUCTORS SHALL BE PAINTED RED.
5. PROVIDE RISER OR PLENUM RATED CABLES ABOVE SUSPENDED CEILINGS.
6. NEW FIRE ALARM SYSTEM SHALL BE INTERGRATED INTO THE EXISTING BUILDING FIRE ALARM SYSTEM.

FIRE ALARM LEGEND

- FIRE ALARM CONTROL PANEL
- FIRE ALARM AUDIO/VISUAL, MOUNT 6'-8" AFF, NUMBER DENOTES CANDELA RATING. NO DESIGNATION EQUALS 15cd.
- FIRE ALARM PULL STATION - MOUNT 48" AFF
- FIRE ALARM VISUAL STROBE ONLY, FLUSH MOUNT 6'-8" AFF NUMBER DENOTE CANDELA RATINGS.
- CEILING MOUNTED (CL) FIRE ALARM VISUAL STROBE ONLY. NUMBER DENOTE CANDELA RATINGS.
- SYSTEM CONNECTED FIXED TEMPERATURE HEAT DETECTOR
- SMOKE DETECTOR, PHOTOELECTRIC TYPE, SYSTEM CONNECTED. DO NOT LOCATE SMOKE DETECTOR WITHIN 3FT OF SUPPLY AIR DIFFUSER.
- SMOKE DETECTOR, PHOTOELECTRIC TYPE, SYSTEM CONNECTED. "ER" = ELEV. RECALL
- SYSTEM CONNECTED SMOKE DETECTOR, PHOTOELECTRIC TYPE, WITH SOUNDER BASE
- CARBON MONOXIDE DETECTOR
- CARBON MONOXIDE/SMOKE DETECTOR COMBINATION UNIT-LOCATED OVER AREA OF PARKING GARAGE.

Prepared For:

BENNETT ENGINEERING
MECHANICAL ELECTRICAL
(207) 865-8476

Consulting Engineer:
ARCHETYPE architects
48 Union Wharf Portland, Maine 04101
(207) 772-6022 Fax (207) 772-4056

Architect:
UNITED STATES COAST GUARD
2 MONUMENT SQUARE
PORTLAND, MAINE

Project:

Revisions:

Date:

11 February 2014
Scale: 1/8" = 1'-0"
FIRE ALARM PLAN

FA1