

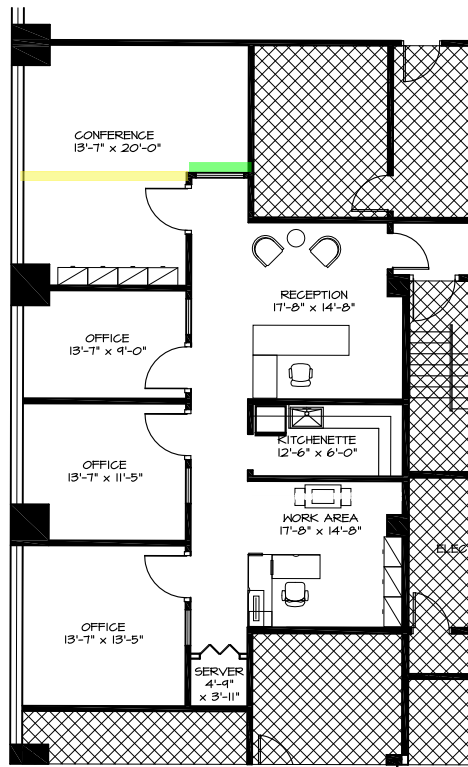




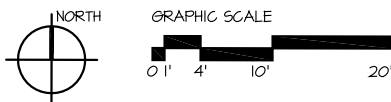
Reviewed for Code Compliance  
Permitting and Inspections Department  
Approved with Conditions

12/13/2018

 New Wall location.  
 New door location.








3 Offices  
1 Paralegal  
1,908 RSF

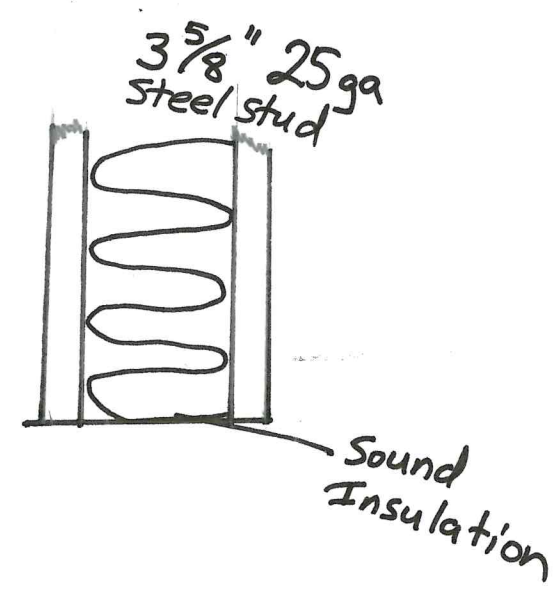
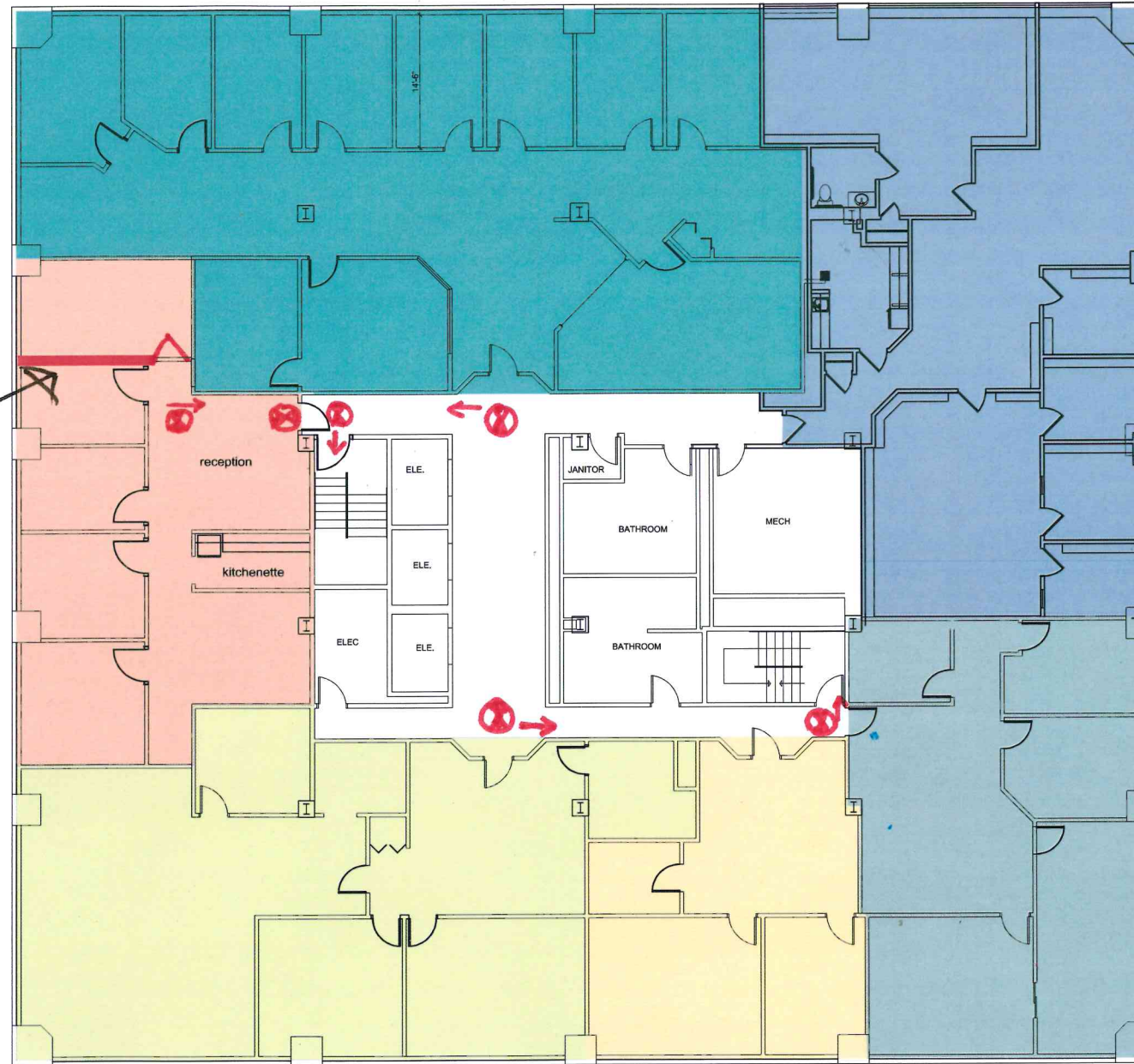




Reviewed for Code Compliance  
Permitting and Inspections Department  
Approved with Conditions

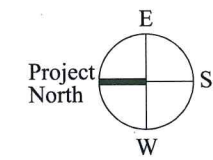
12/13/2018

- New Partition 
- Existing Partition 
- Exit Signs 
- Emergency Lights 
- New divider wall and door 



11/12/18

PLANS DRAWN TO SHOW  
FLOOR PLAN LAYOUTS.  
DIMENSIONS SHOULD BE  
FIELD VERIFIED.



Prepared For:

Consulting Engineer:

Architect:  
**ARCHETYPE**  
architects  
48 Union Wharf Portland, Maine 04101  
(207) 772-6022 Fax (207) 772-4056

Project:  
**2 MONUMENT  
SQUARE**  
2 MONUMENT SQUARE  
PORTLAND, MAINE

Revisions:

Date: 19 March 2010  
Scale: 1/8" = 1'-0"

SEVENTH FLOOR PLAN

**A1.07**