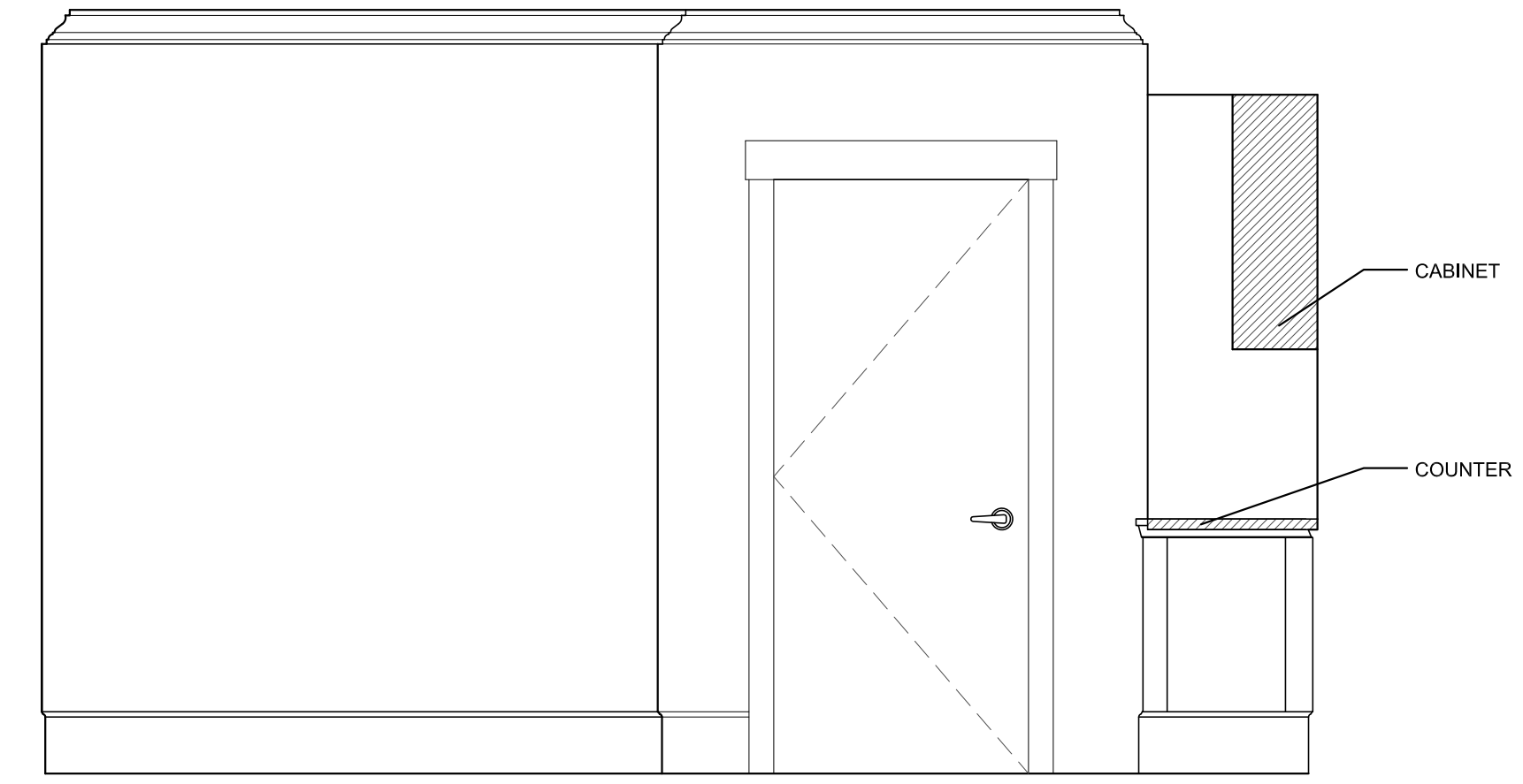
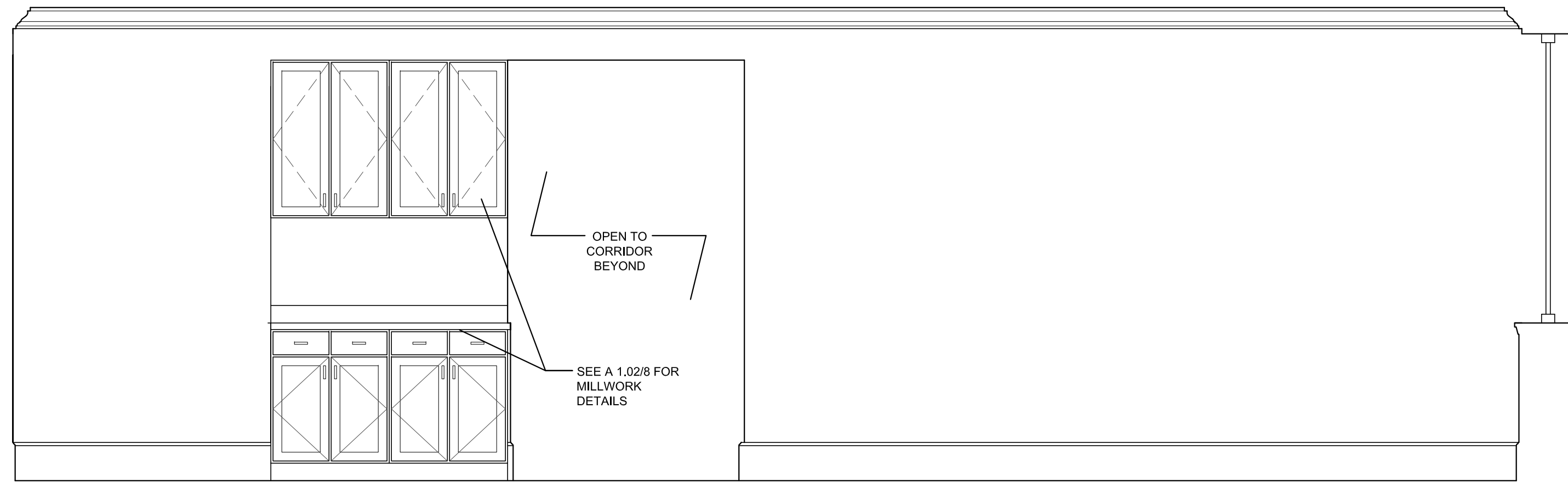


1 | INTERIOR ELEVATION AT RECEPTION
1/2"=1'-0"



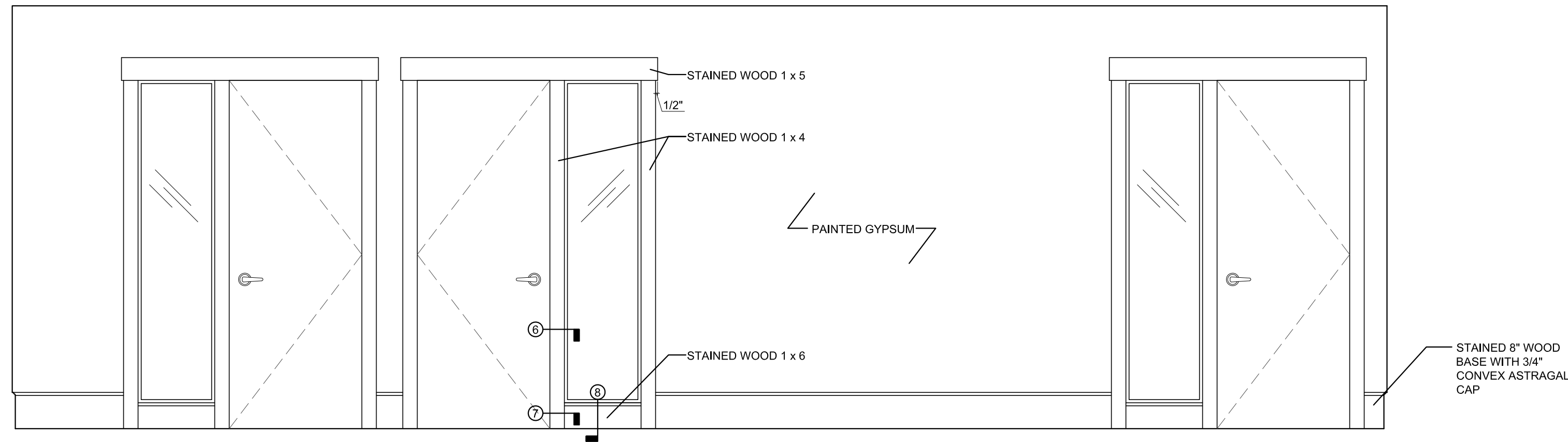
2 | INTERIOR ELEVATION AT RECEPTION
1/2"=1'-0"



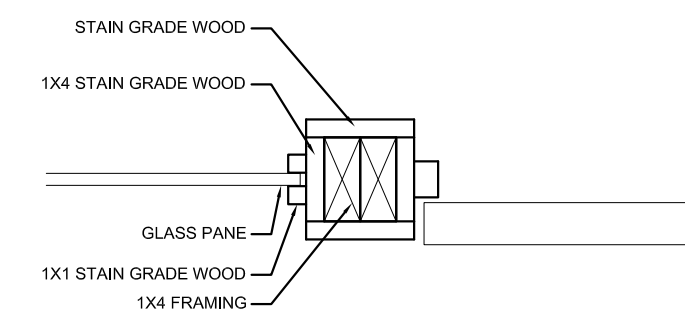
3 | INTERIOR ELEVATION AT RECEPTION
1/2"=1'-0"



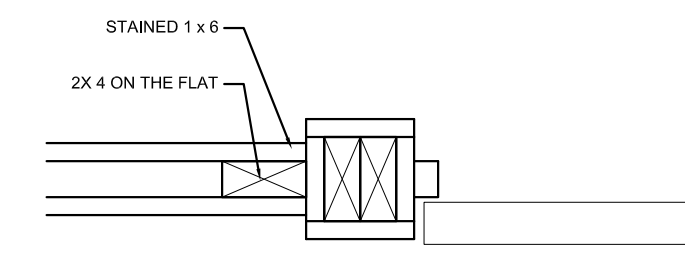
4 | INTERIOR ELEVATION AT RECEPTION
1/2"=1'-0"



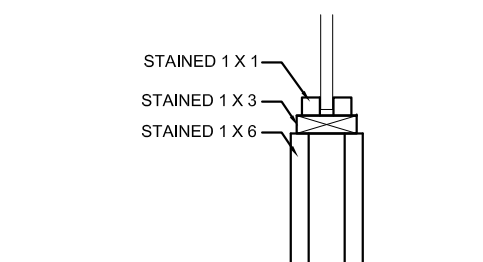
5 | INTERIOR ELEVATION AT CORRIDOR
1/2"=1'-0"



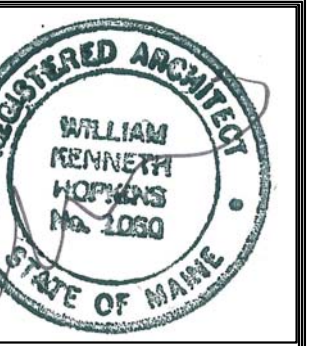
6 | DETAIL AT DOOR SIDE LITE
1-1/2"=1'-0"



7 | DETAIL AT DOOR SIDE LITE
1-1/2"=1'-0"



8 | DETAIL AT DOOR SIDE LITE
1-1/2"=1'-0"



Prepared For:

Consulting Engineer:

Architect: **ARCHETYPE** architects
48 Union Wharf Portland, Maine 04101
(207) 772-6022 Fax (207) 772-4056

Project: **GSA - FEDERAL JUDGE - 6th FLOOR**
2 MONUMENT SQUARE
PORTLAND, MAINE

Revisions:

Date: August 16th, 2013
Scale: As Noted

INTERIOR ELEVATIONS

A1.03

