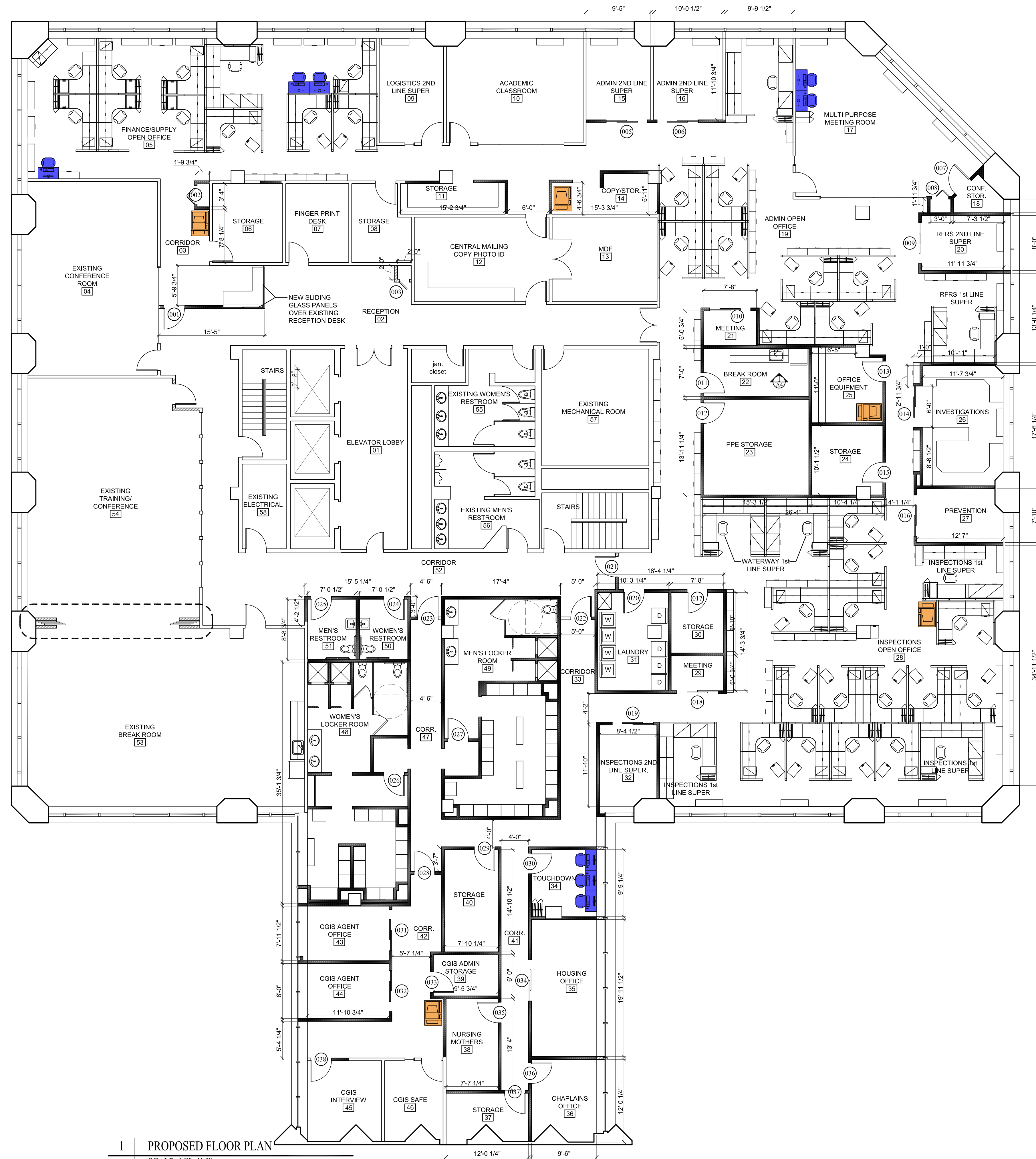


# TEMPLE STREET

CONGRESS STREET



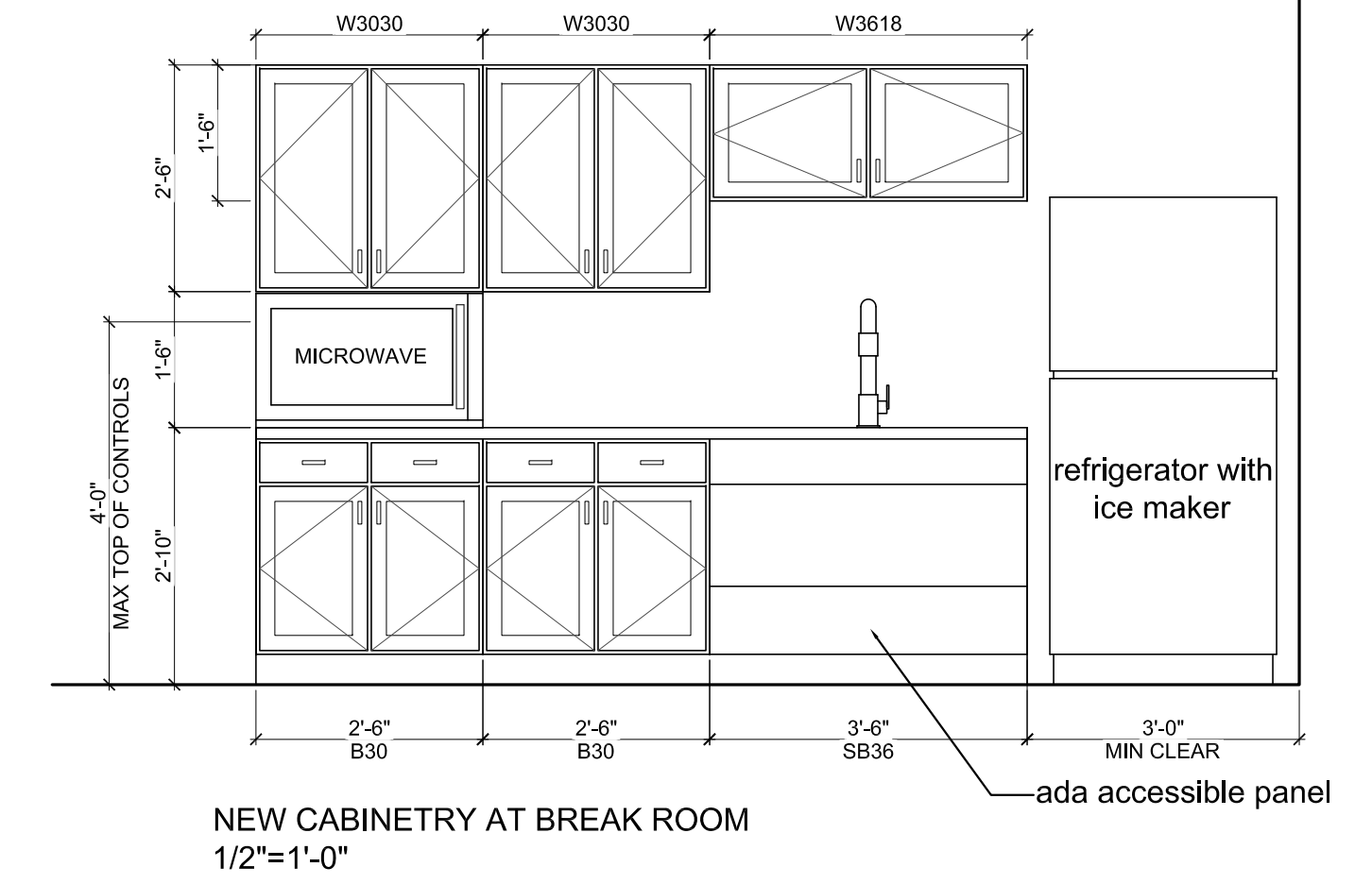
1 | PROPOSED FLOOR PLAN  
SCALE: 1/8"=1'-0"

## LEGEND:

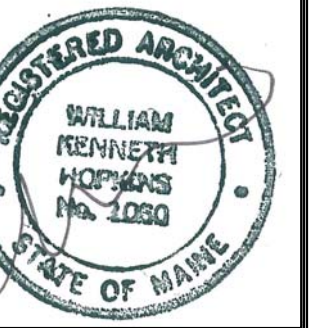
### GENERAL NOTES

- ALL DIMENSIONS ARE TO FACE OF ROUGH FRAMING AND FACE OF MASONRY. ALL DIMENSIONS MUST BE FIELD VERIFIED AND ANY ADJUSTMENTS MADE FOR ACTUAL FOUND CONDITIONS. CLEAR FINISHED DIMENSIONS ARE NOTED.
- CLEAR DIMENSIONS ARE FROM FINISH FACE.

WALL TYPE (SEE SHEET A4)	(WX)
PLAN DETAIL	(X/AXX)
EXISTING WALL	(Solid line)
DEMO AND REMOVE	(Dashed line)
NEW STUD WALL	(Hatched area)



FEDERAL STREET



Prepared For:

**ARCHETYPE** architects  
48 Union Wharf Portland, Maine 04101  
(207) 772-6022 Fax (207) 772-4056

Architect:

Project:

Revisions:

Date: 16 September 2013  
Scale: 1/8" = 1'-0"

PROPOSED FLOOR PLAN

A3