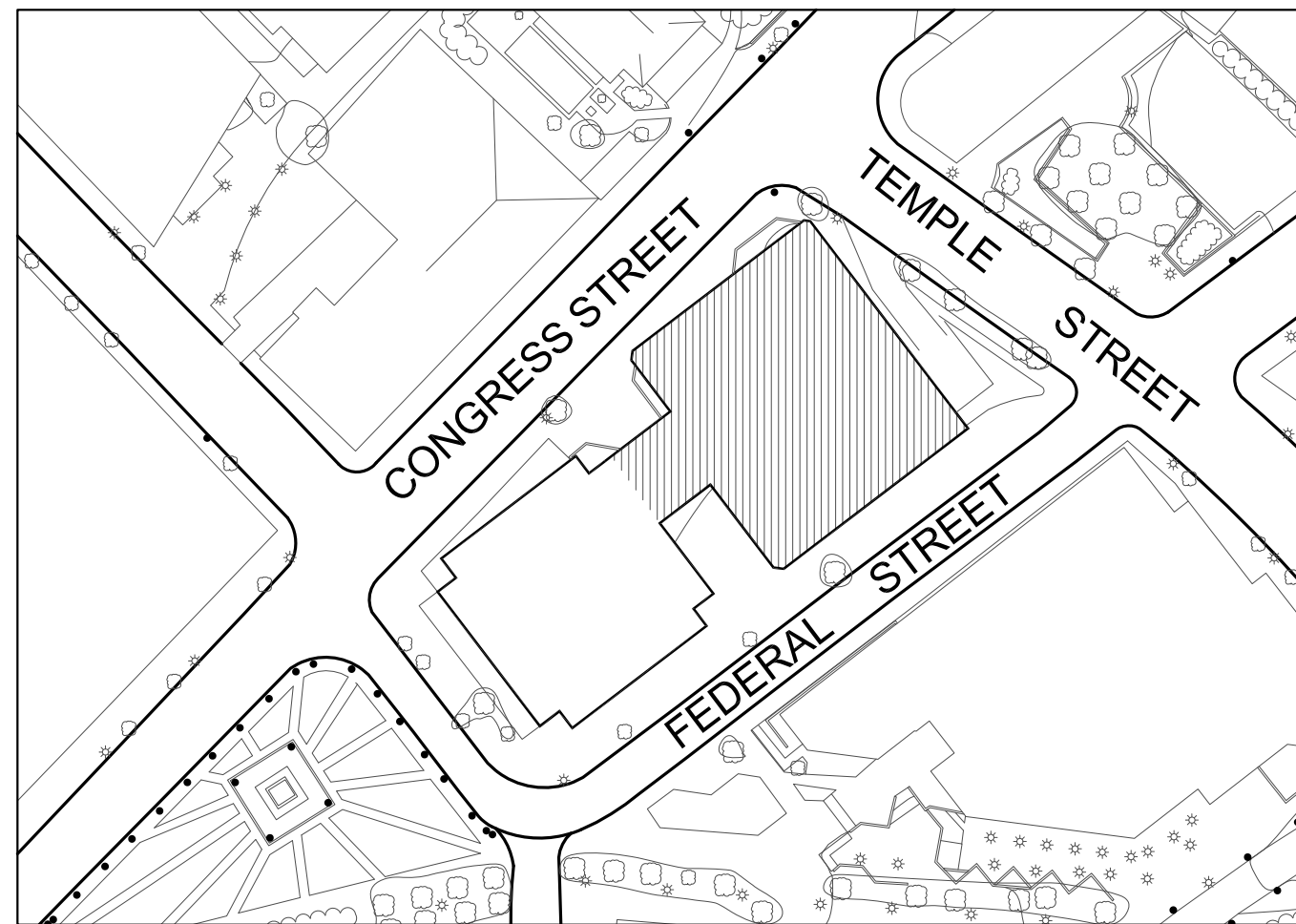


VICINITY MAP
NTS



HiMSS

4th Floor

INTERIOR RENOVATIONS

2 MONUMENT SQUARE
PORTLAND, ME 04101
FOR PERMIT JULY 15, 2014

DRAWING LIST

	COVER SHEET
A-1.01	CONSTRUCTION PLAN
A-1.03.00	04 CONSTRUCTION PLAN
A-1.06.00	04 FINISH PLAN
A-2.01.00	INTERIOR ELEVATIONS

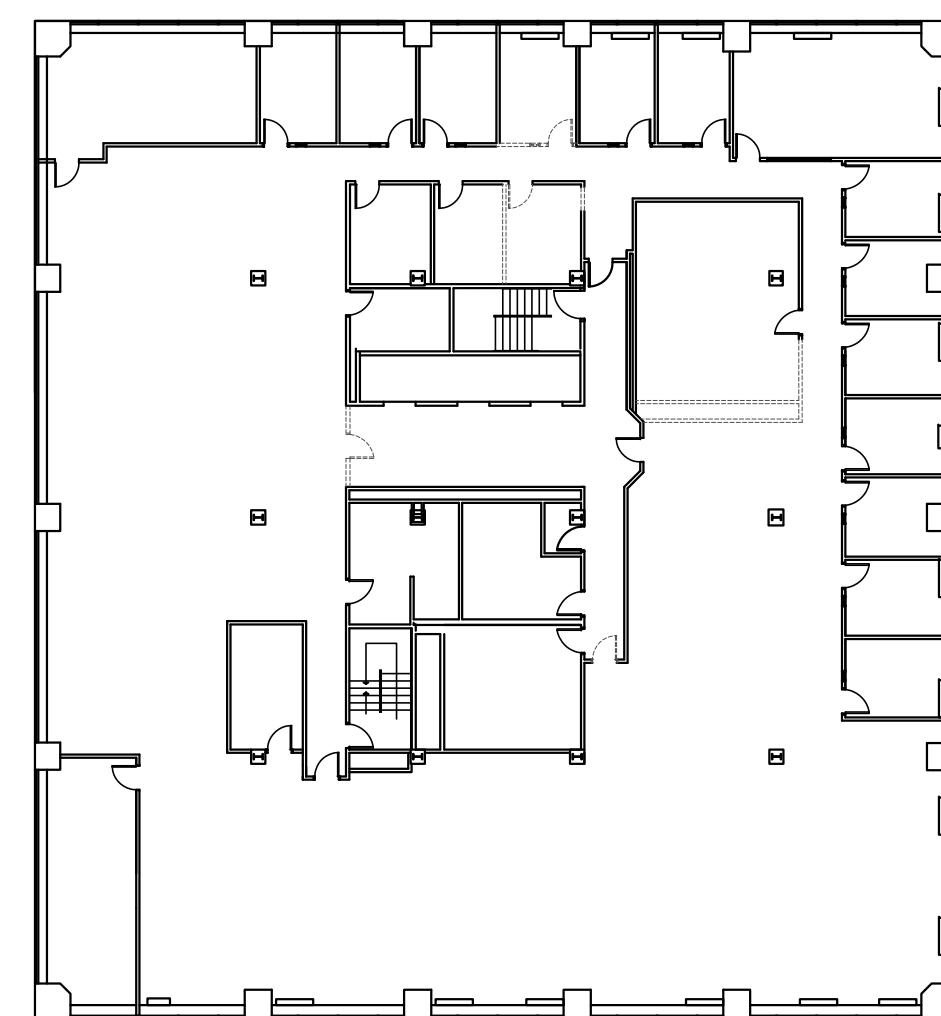
PROJECT DESCRIPTION
RENOVATION OF EXISTING 7,500 ABOA SF OFFICE SPACE ON FOURTH FLOOR OF SPRINKLED 9 STORY TYPE 1B BUILDING.

PER NFPA 101 OCCUPANCY
7,500 SF/ 100 SF PER PERSON = 75 OCCUPANTS
COMMON PATH OF TRAVEL- MAXIMUM 100'

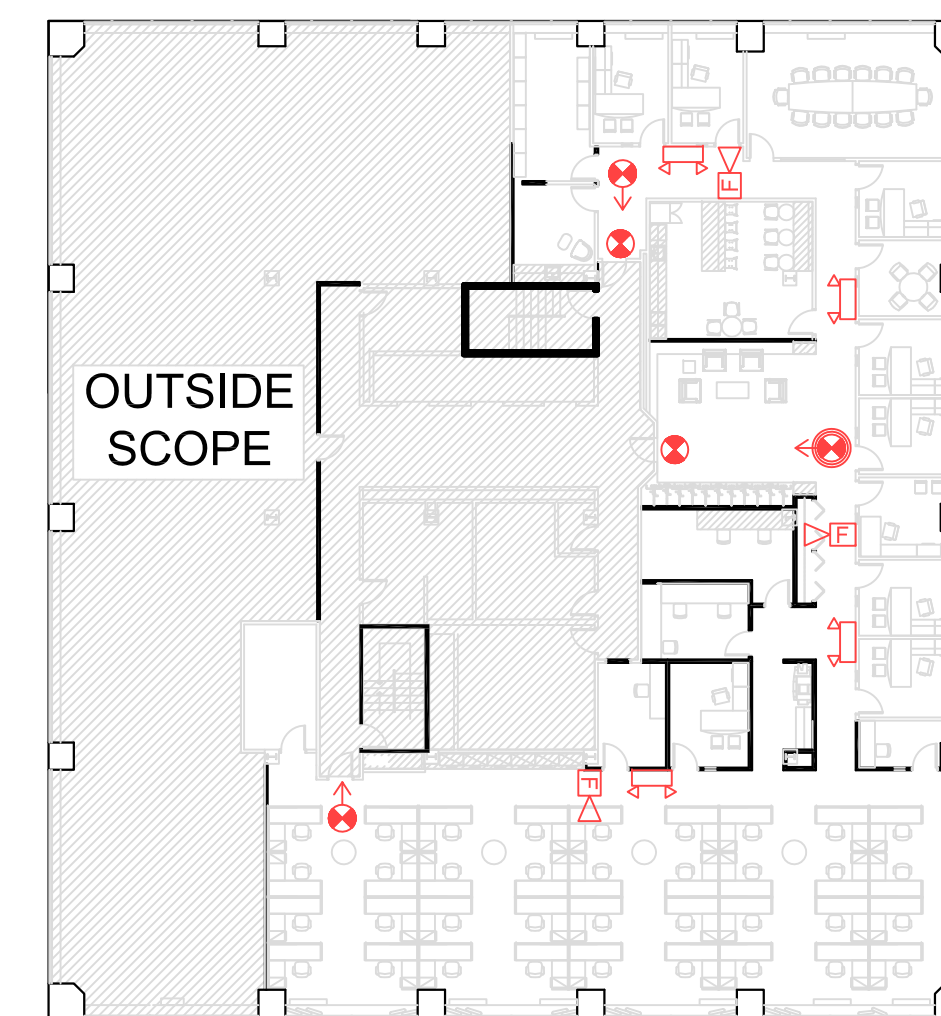
OWNER
GRAND METRO BUILDERS
25 SOUTH SERVICE RD
SUITE 300
JERICHO NY, 11753

ARCHITECT
ARCHETYPE ARCHITECTS
48 UNION WHARF
PORTLAND, ME 04101
PH: 207-772-6022

EXISTING AND DEMO PLAN



LIFE SAFETY PLAN



ARCHITECTURAL SYMBOLS

EXISTING EXIT SIGN	⊕
NEW EXIT SIGN	⊕
NEW EMERGENCY LIGHTING	⊕
HORN/STROBE	⊕

