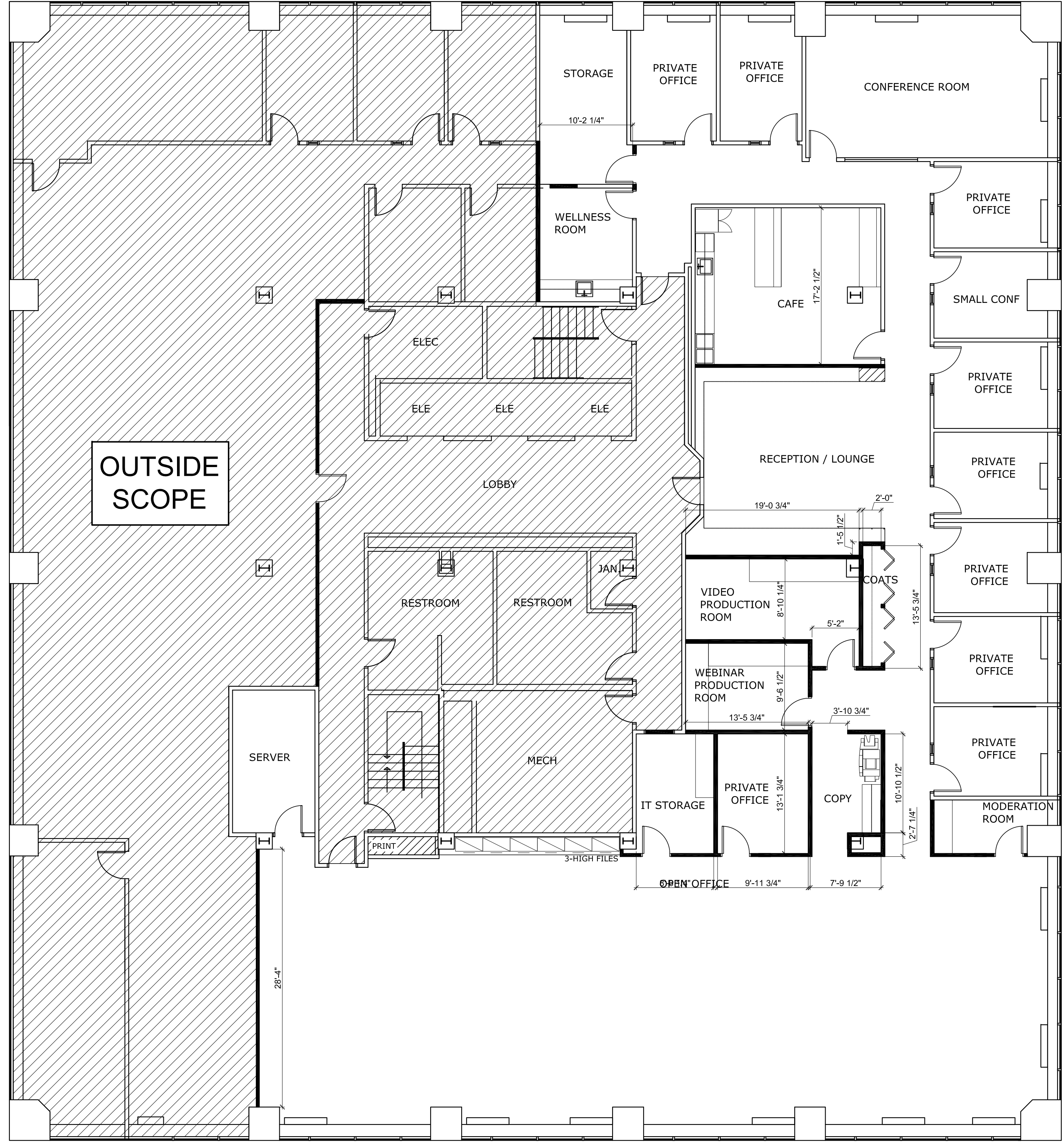
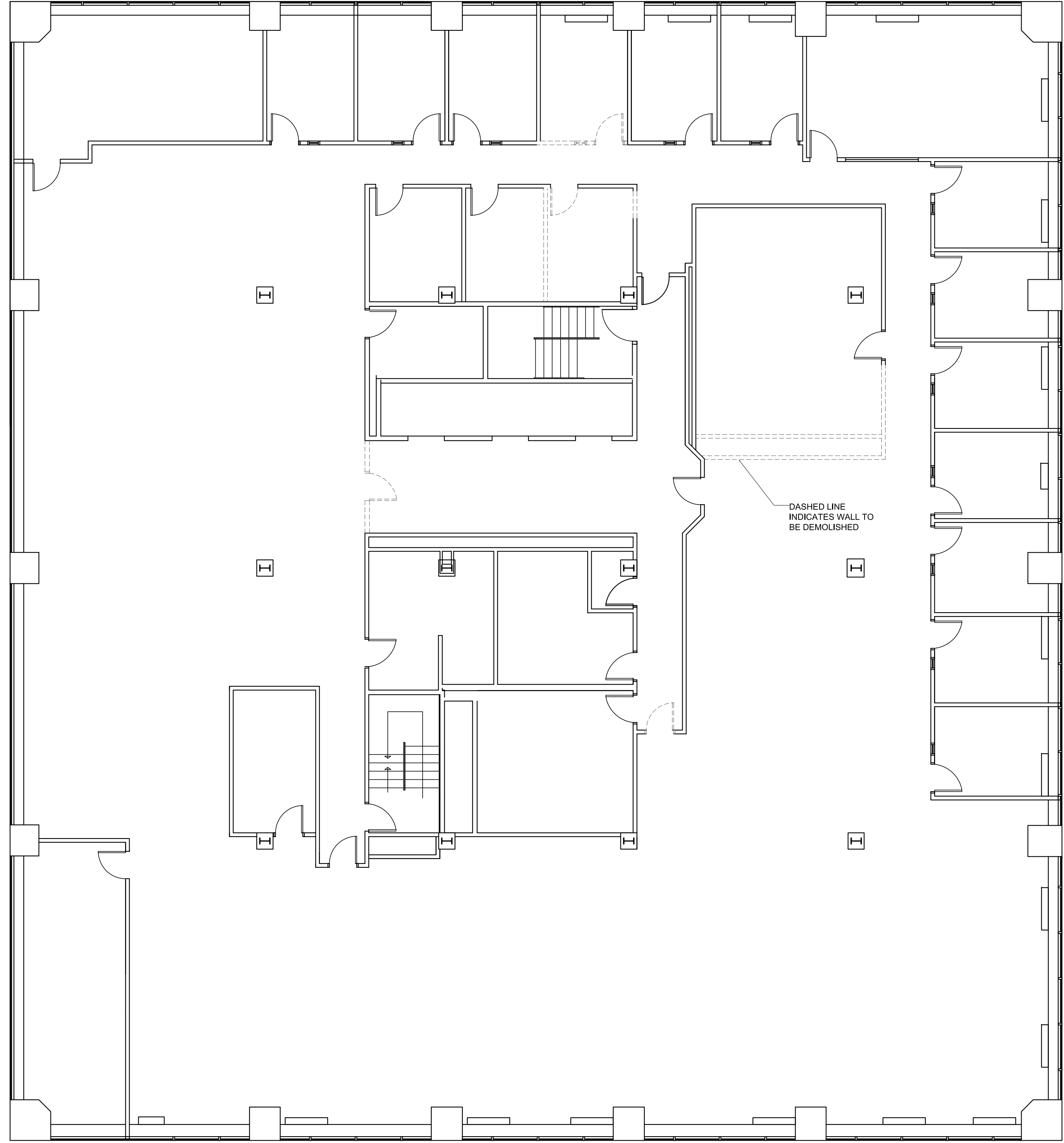


KEY

- EXISTING WALL TO REMAIN
- - - WALL TO BE DEMOLISHED
- NEW WALL



Prepared For:
GRAND METRO BUILDERS
JERICHO, NEW YORK

Consulting Engineer:

Architect:
ARCHETYPE architects
48 Union Wharf Portland, Maine 04101
(207) 772-6022 Fax (207) 772-4056

Project:
HiMSS
2 Monument Square
Portland, Maine 04101

Revisions:

Date: JULY 15, 2014
Scale: 1/8" = 1'-0"
FOURTH FLOOR PLAN

A1.01

1 | FIRST FLOOR PLAN
SCALE: 1/8"=1'-0"

