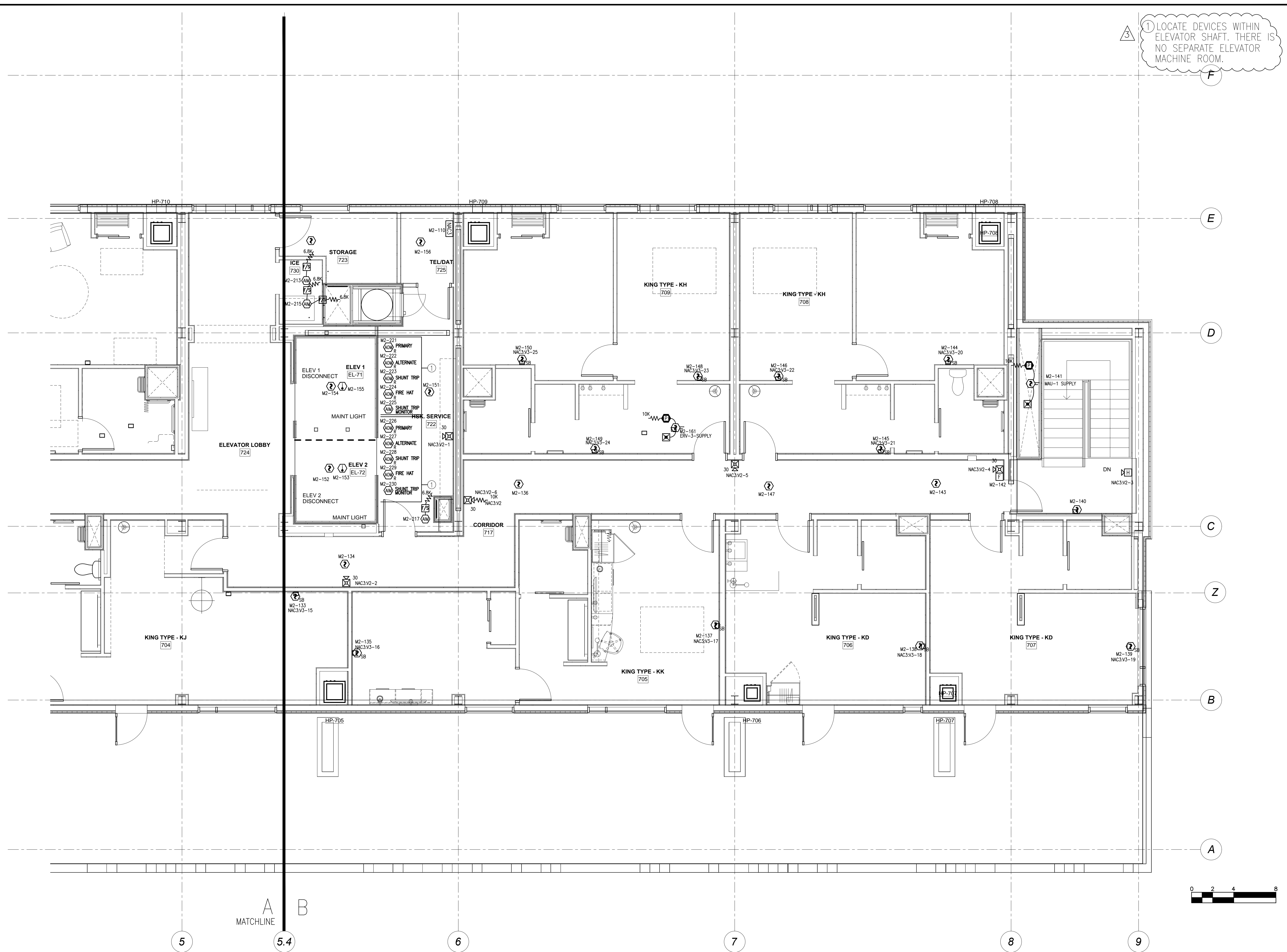


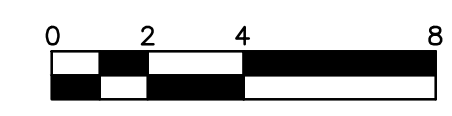
FILE PATH: P:\2013\147\Hyatt Place\REV 3\CAD\FA-114.dwg

LAST PRINTED: 2/10/2014 8:55:13 AM LAST SAVED BY: SKALAFARSKI

24" x 36"



① LOCATE DEVICES WITHIN ELEVATOR SHAFT. THERE IS NO SEPARATE ELEVATOR MACHINE ROOM.



**tyco** SimplexGrinnell

20 THOMAS DRIVE  
WESTBROOK, ME 04092  
207-842-6440  
SALES  
207-842-6440  
SERVICE  
207-842-6439  
FAX  
© 2013 SIMPLEXGRINNELL, LP  
ALL RIGHTS RESERVED

NO.	DATE	REVISION DESCRIPTION
1	8/14/13	REVISED PER ENGINEERS REVIEW COMMENTS DATED 7/19/13 & 8/5/13
2	9/10/13	REVISED PER SUBMITTAL REVIEW DATED 8/29/13
3	10/07/13	REVISED PER SUBMITTAL REVIEW DATED 10/1/13

DESIGNED BY: JS  
CHECKED BY: SK

**FIRE ALARM & AREA OF REFUGE SYSTEMS**  
**SEVENTH FLOOR PLAN PART B**  
**HYATT PLACE PORTLAND-OLD PORT**  
433 FORE STREET  
PORTLAND, ME

DRAWN BY: LORION DATE: 6/14/13  
CHECKED BY: KALAFARSKI DATE: 7/12/13  
PROJECT NUMBER: 971237001  
SHEET TITLE: FIRE ALARM SYSTEM SEVENTH FLR PLAN PART B  
SHEET NUMBER: FA-114  
FA-114.dwg