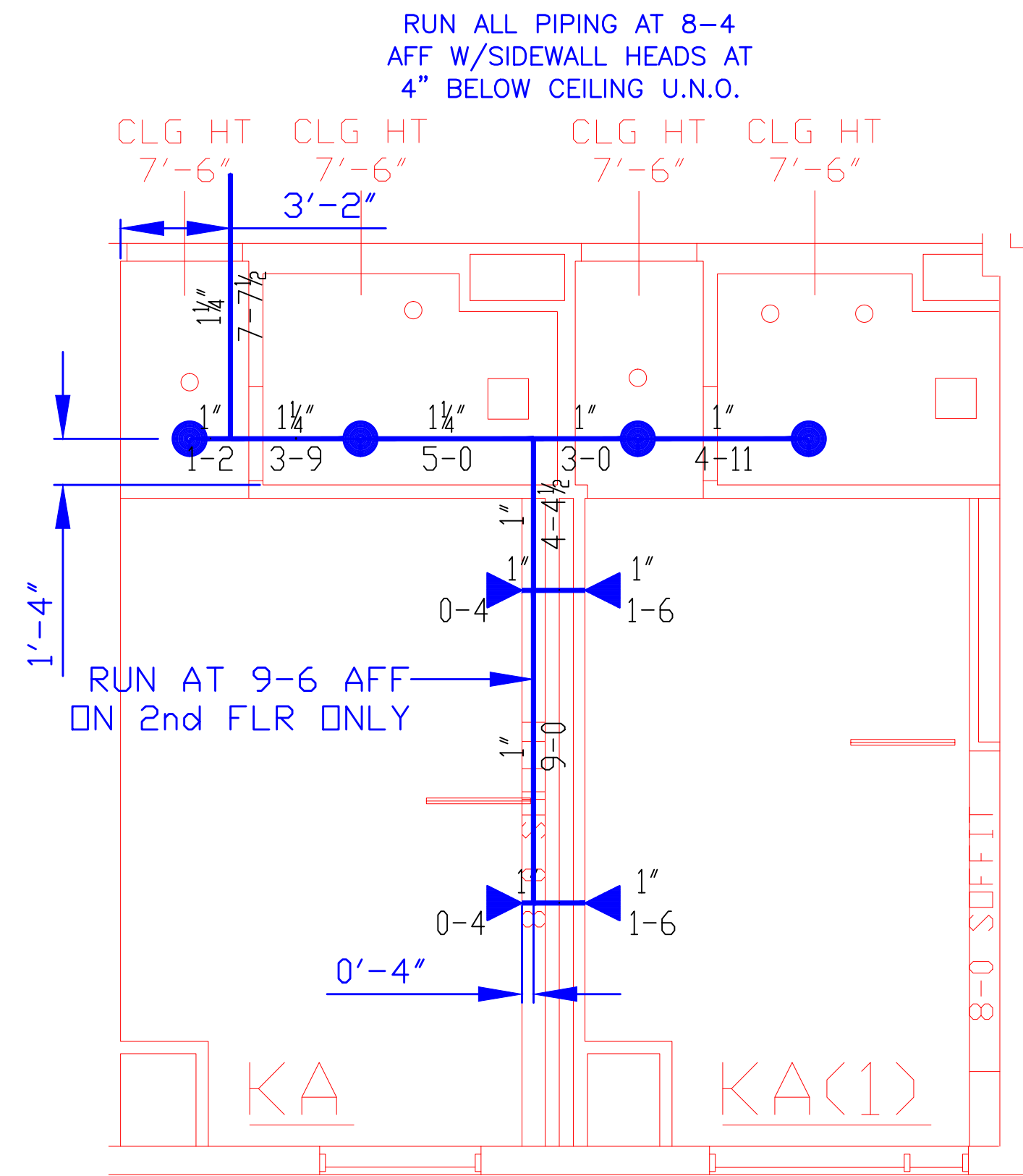
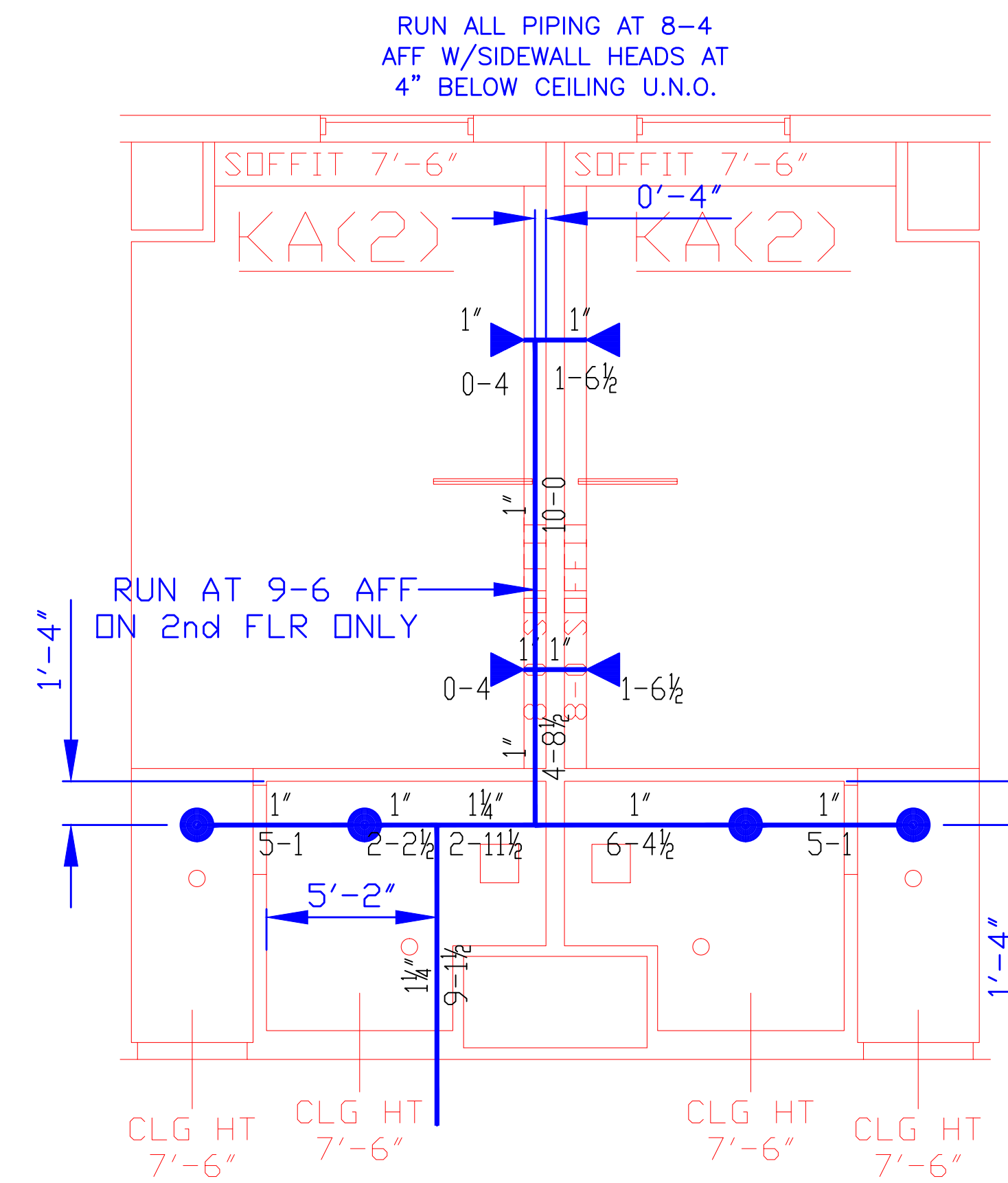


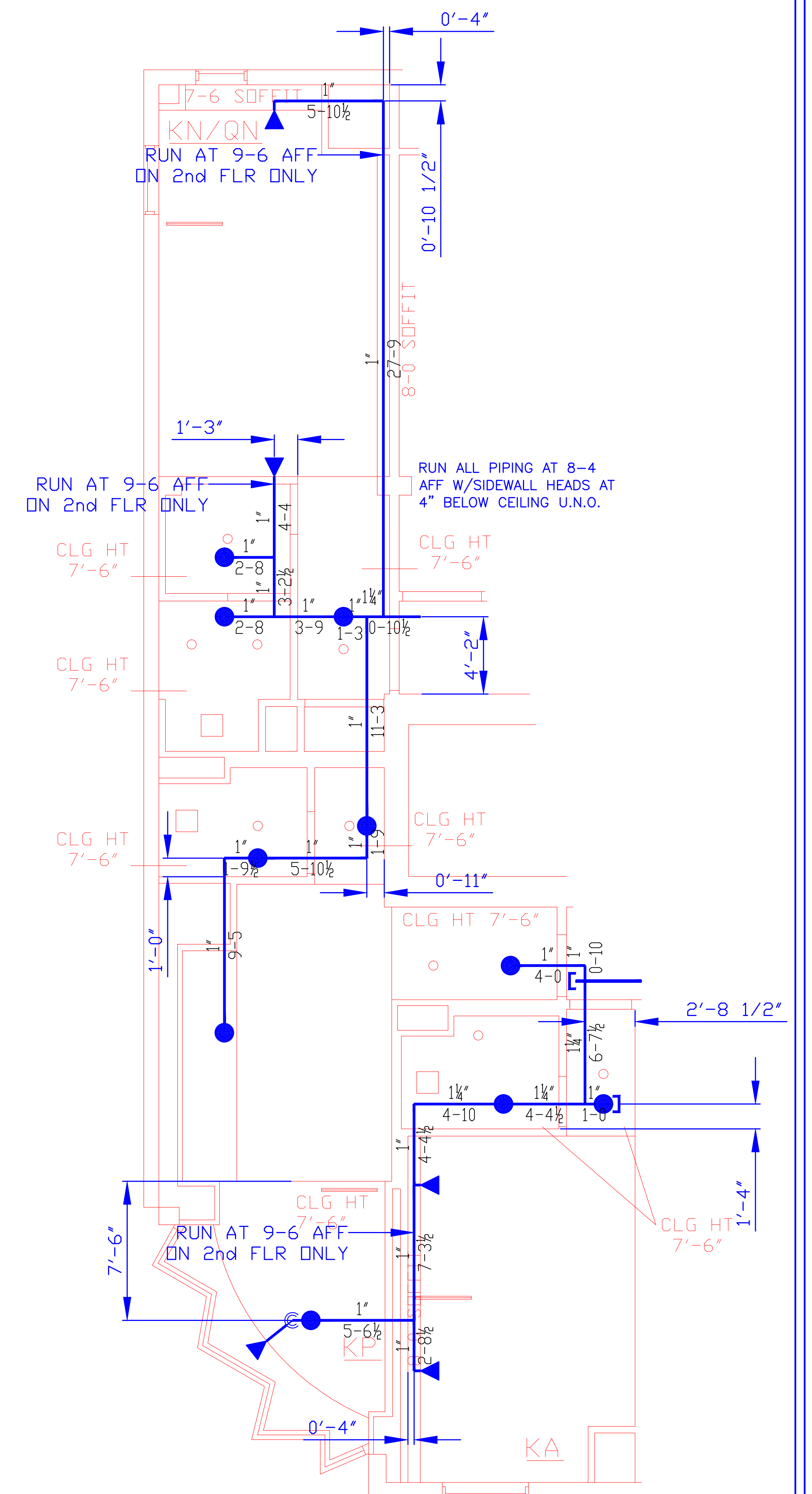
TYPICAL ROOM LAYOUT TYPE - A
SCALE: 1/4"=1'-0"



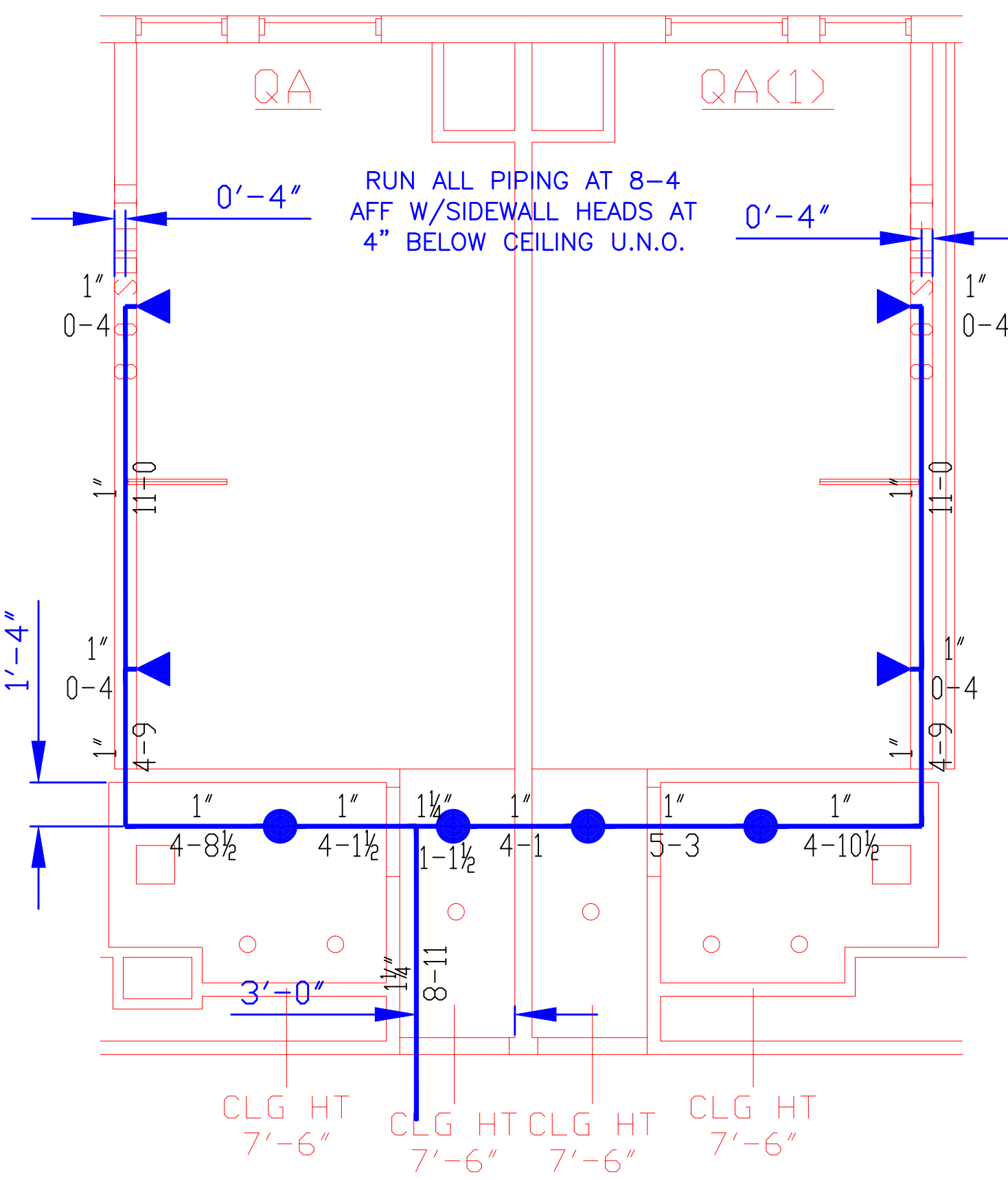
TYPICAL ROOM LAYOUT TYPE - B
SCALE: 1/4"=1'-0"



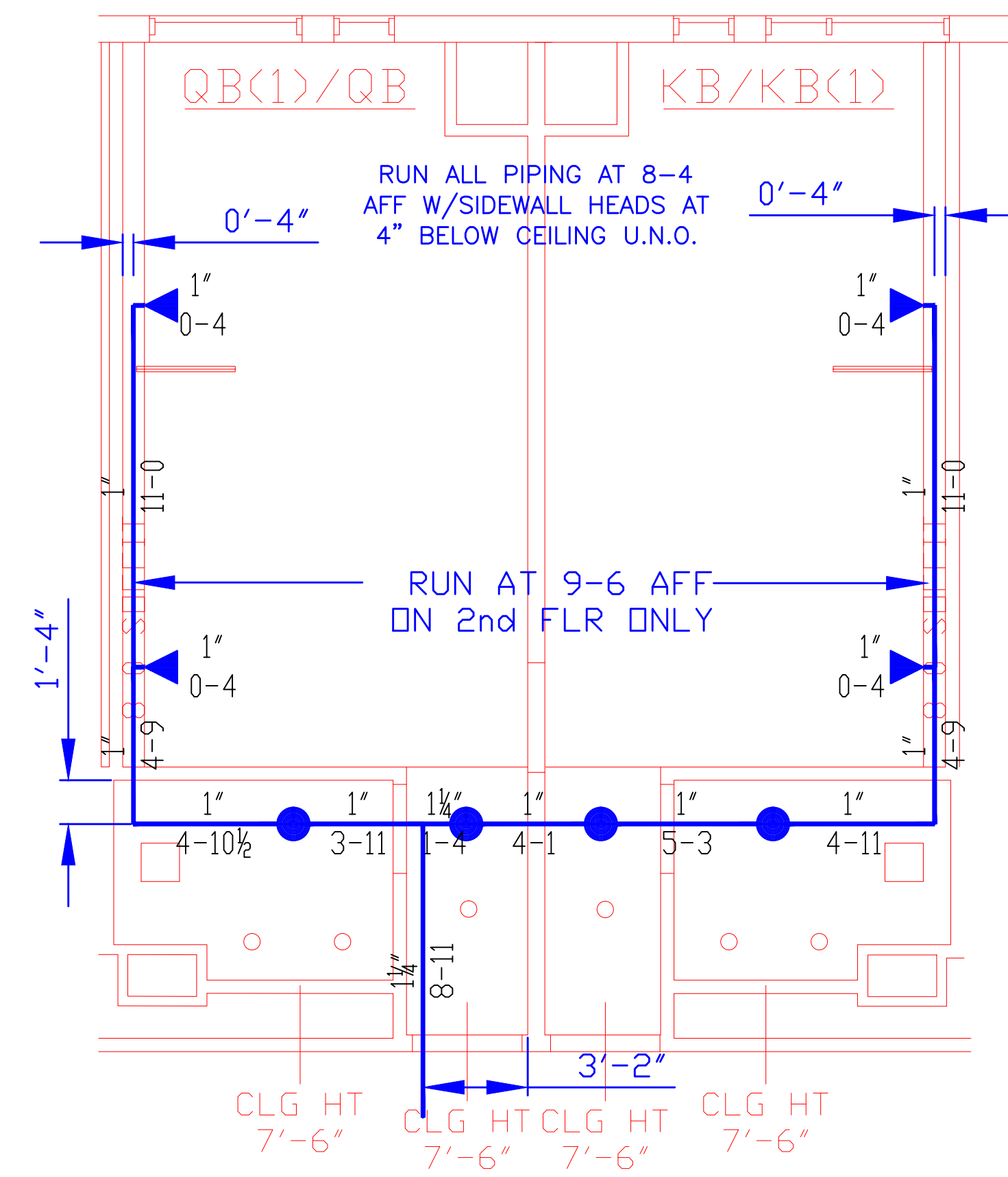
TYPICAL ROOM LAYOUT TYPE - C
SCALE: 1/4"=1'-0"



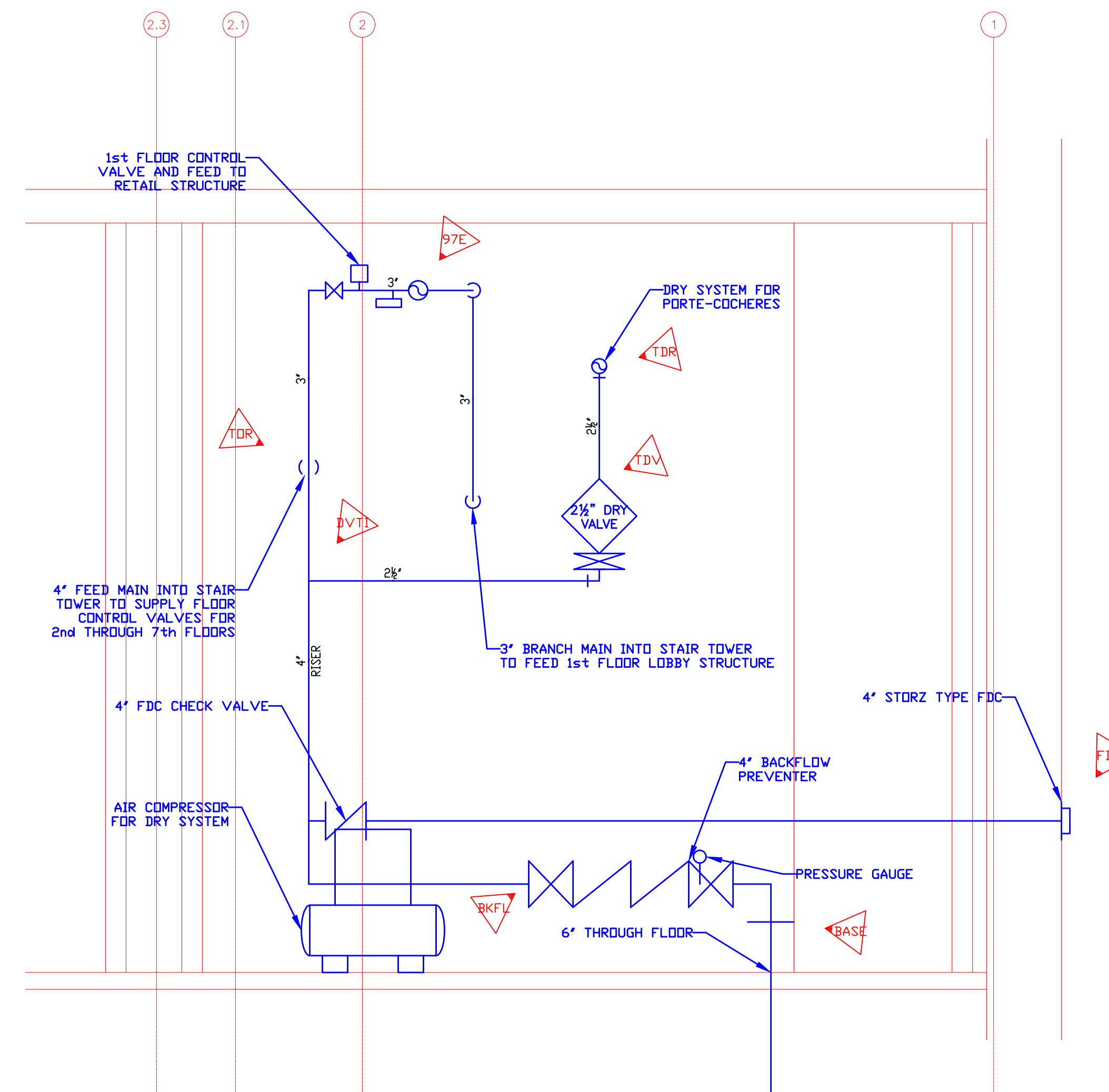
TYPICAL ROOM LAYOUT TYPE - F
SCALE: 1/4"=1'-0"



TYPICAL ROOM LAYOUT TYPE - D
SCALE: 1/4"=1'-0"



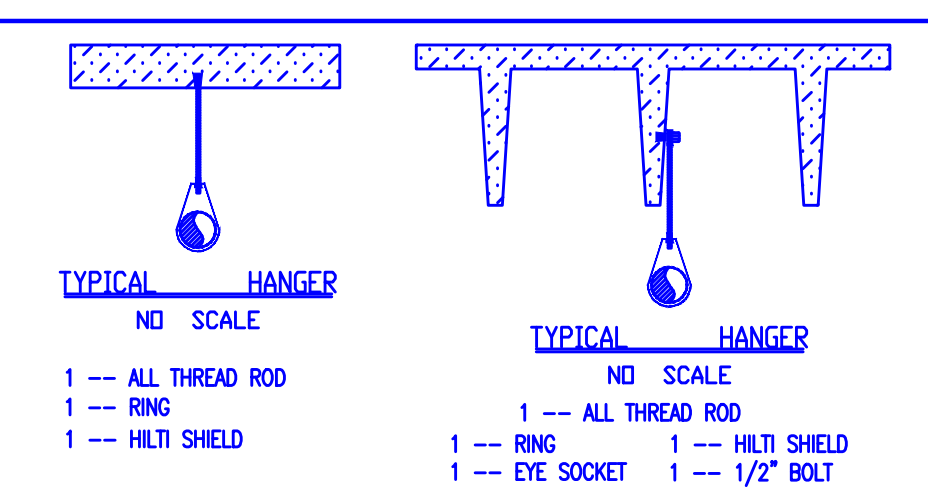
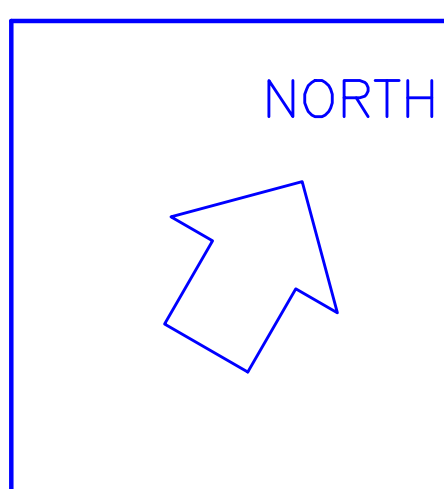
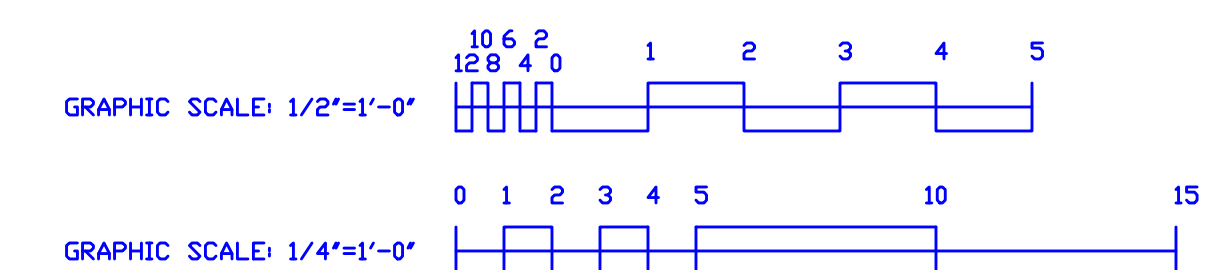
TYPICAL ROOM LAYOUT TYPE - E
SCALE: 1/4"=1'-0"



ELEVATION AT SPRINKLER ENTRANCE
SCALE: 1/2"=1'-0"

ALL CEILINGS IN GUESTROOMS ARE AS FOLLOWS U.N.O.:

| | | |
|-----------------|---|--------------------------|
| 2nd FLOOR LEVEL | = | 9'-10" TO CONCRETE PLANK |
| 3rd FLOOR LEVEL | = | 8'-8" TO CONCRETE PLANK |
| 4th FLOOR LEVEL | = | 8'-8" TO CONCRETE PLANK |
| 5th FLOOR LEVEL | = | 8'-8" TO CONCRETE PLANK |



| HANGERS | | |
|----------|--|--|
| AS SHOWN | | |

| ABBREVIATIONS | | |
|---------------|-------------------------|--|
| B | Bottom of Deck | |
| D | Bottom of Pipe | |
| P | Pressure | |
| N.A.C. | Not in Contract | |
| NTS | Not to Scale | |
| OS | Open Star Valve | |
| PRV | Pressure Red Valve | |
| RM | Roof Mounted | |
| SP | Standpipe | |
| TDB | Top of Beam | |
| TOP | Top of Pipe | |
| TOS | Top of Steel | |
| UOL | Unless Otherwise Noted | |
| CL | Centerline | |
| NAL | No Automatic Sprinklers | |
| OTA | Open to Above | |

| CONTRACT RESPONSIBILITIES | | | | | | | | | |
|---------------------------|-----|--------|--|--|--|--|--|--|--|
| ITEM | FPC | OTHERS | | | | | | | |
| STREET CONN | | | | | | | | | |
| EXCAVATION | | | | | | | | | |
| FLUSHING | | | | | | | | | |
| WIRING | | | | | | | | | |
| PAINTING | | | | | | | | | |
| TAMPERS SYSTEMS | | | | | | | | | |
| FLOW SWITCHES | | | | | | | | | |
| STREET CONN | | | | | | | | | |

| SPRINKLER HEAD LEGEND | | | | | | | | | | |
|-----------------------|----------|--------|-------|--------|---------------------|-------|------|---------|----------|-----------------|
| SYMBOL | MAKE | MODEL | SIN | FINISH | TYPE | TEMP | NPT | DRIFICE | K-FACTOR | TOTAL |
| ● | RELIABLE | RFCA9 | RA836 | WHITE | CERAMIC PENDENT | 165 F | 1/2" | 7/16" | 4.9 | SEE FLOOR PLANS |
| ▲ | RELIABLE | FIRE44 | R3331 | WHITE | HORIZONTAL SIDEWALL | 135 F | 1/2" | 3/8" | 4.4 | SEE FLOOR PLANS |

SPRINKLER SYSTEMS INC.
P.O. BOX 1395
LEWISTON MAINE
04243-1285

HYATT PLACE PORTLAND - OLD PORT
PORTLAND, MAINE
TYPICAL GUESTROOM PART PLANS
CONTRACT WITH CONSIGLI CONSTRUCTION

| SYSTEM TYPE | NO. | DATE | DESCRIPTION |
|-------------|-----|-----------|-----------------------|
| WET | 1 | 19 JUL 13 | REVISED TO DRY SYSTEM |
| DRY | 1 | 19 JUL 13 | REVISED TO DRY SYSTEM |
| DELUGE | | | |
| PREACTION | | | |
| M.L. LIFE | | | |

DATE: 22 JUNE 2013
TOTAL SPRKS ON JOB: 830
SHEET # FP-4
4 OF 4
JOB # 12-101