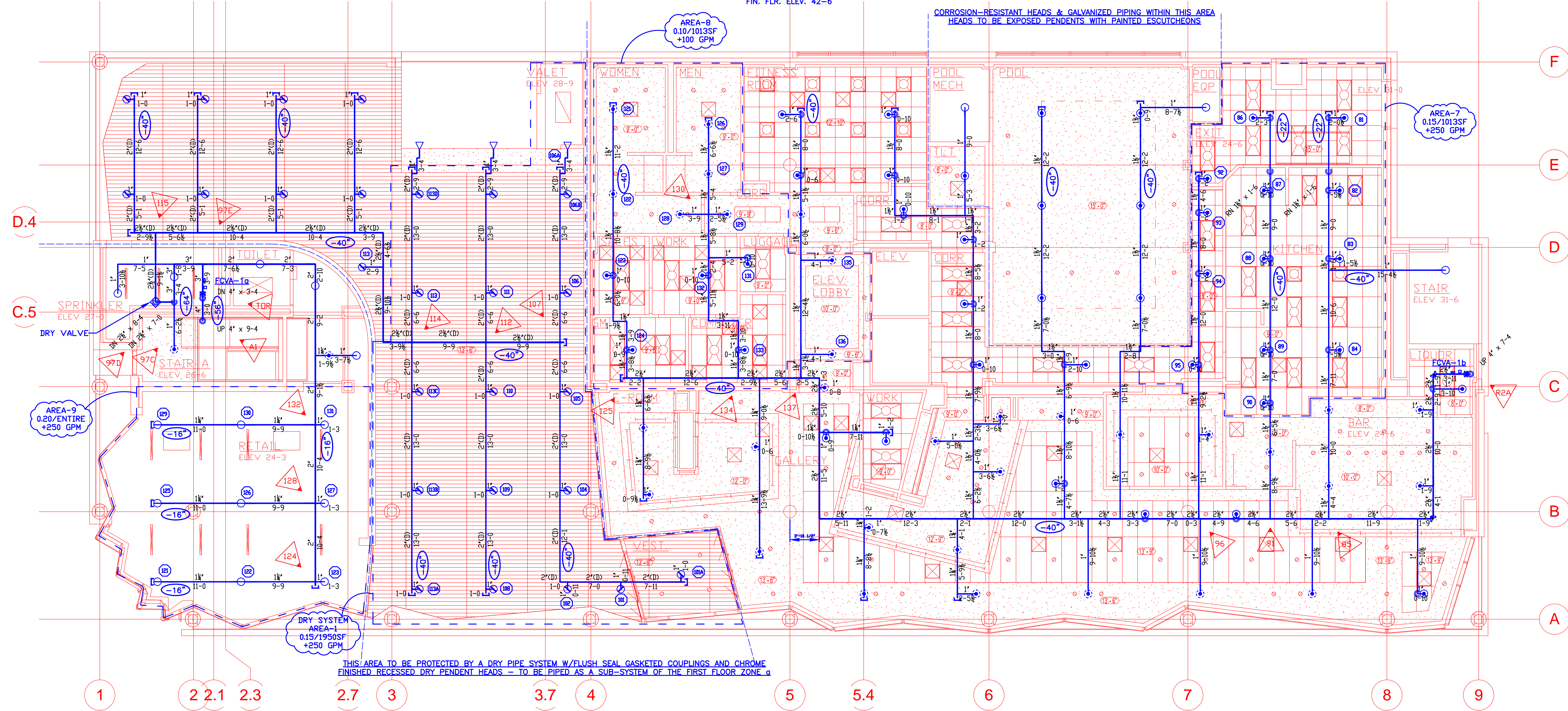


SECOND FLOOR PLAN

SCALE: 1/8"=1'-0"
FIN. FLR. ELEV. 42'-6"



FIRST FLOOR PLAN

SCALE: 1/8"=1'-0"
FIN. FLR. ELEV. 24'-6"

AREA-6

HYDRAULIC DATA NAMEPLATE

This Building is protected by a hydraulically designed Automatic Sprinkler System

Location AREA-6

No. of Sprinkler 11

Basis of design

1. Density .15 gpm/sqft
2. Design area of discharge 900 sqft

System Demand

1. Water Flow Rate @ Base 226.01 gpm
2. Residual Pressure @ Base 64.866 psi

Cushion: 35.63 psi

NOT MOST REMOTE AREA

AREA-7

HYDRAULIC DATA NAMEPLATE

This Building is protected by a hydraulically designed Automatic Sprinkler System

Location AREA-7

No. of Sprinkler 13

Basis of design

1. Density .15 gpm/sqft
2. Design area of discharge 1013 sqft

System Demand

1. Water Flow Rate @ Base 276.75 gpm
2. Residual Pressure @ Base 59.843 psi

Cushion: 17.60 psi

NOT MOST REMOTE AREA

DRY SYSTEM

HYDRAULIC DATA NAMEPLATE

This Building is protected by a hydraulically designed Automatic Sprinkler System

Location AREA-1

No. of Sprinkler 18

Basis of design

1. Density .15 gpm/sqft
2. Design area of discharge 1950 sqft

System Demand

1. Water Flow Rate @ Base 266.69 gpm
2. Residual Pressure @ Base 86.534 psi

Cushion: 13.49 psi

REMOTE AREA - DRY SYSTEM

AREA-8

HYDRAULIC DATA NAMEPLATE

This Building is protected by a hydraulically designed Automatic Sprinkler System

Location AREA-8

No. of Sprinkler 13

Basis of design

1. Density .10 gpm/sqft
2. Design area of discharge 1013 sqft

System Demand

1. Water Flow Rate @ Base 294.98 gpm
2. Residual Pressure @ Base 87.920 psi

Cushion: 12.54 psi

NOT MOST REMOTE AREA

AREA-9

HYDRAULIC DATA NAMEPLATE

This Building is protected by a hydraulically designed Automatic Sprinkler System

Location AREA-9

No. of Sprinkler 9

Basis of design

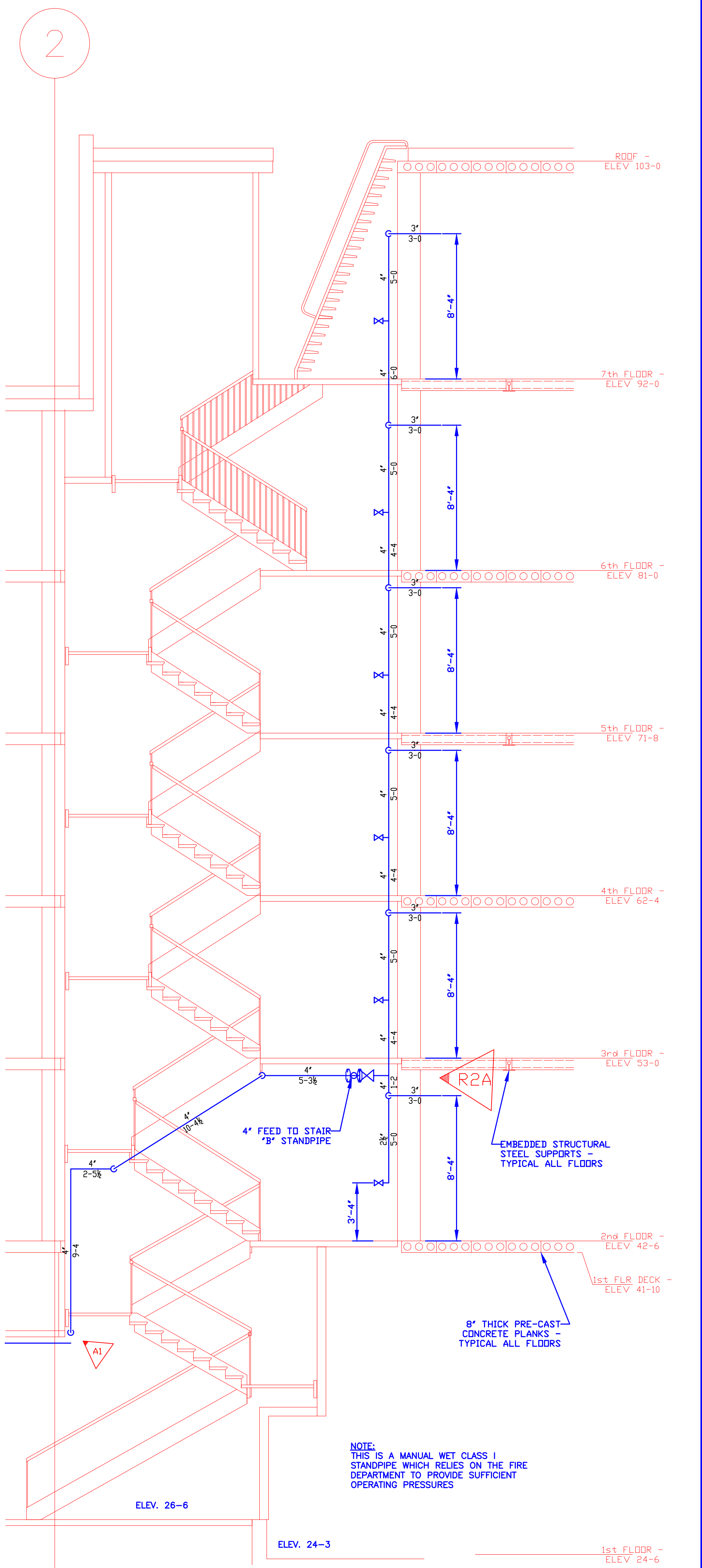
1. Density .20 gpm/sqft
2. Design area of discharge ENTIRE

System Demand

1. Water Flow Rate @ Base 242.79 gpm
2. Residual Pressure @ Base 62.416 psi

Cushion: 38.03 psi

NOT MOST REMOTE AREA



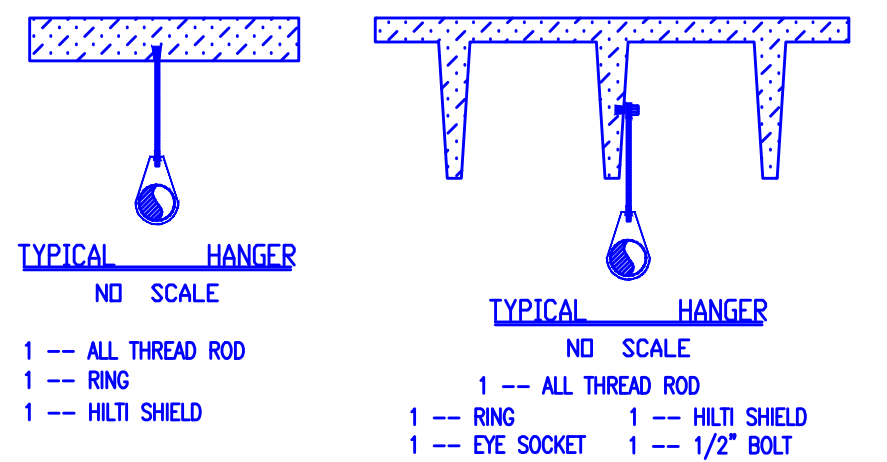
ELEVATION OF STAIR "A" - MAIN RISER

SCALE: 1/4"=1'-0"

GRAPHIC SCALE: 1/4"=1'-0"

GRAPHIC SCALE: 1/8"=1'-0"

NORTH



HANGERS

AS SHOWN

ABBREVIATIONS

Bottom of Beam, Bottom of Deck, Bottom of Pipe, N & C, Nipple and Cap, Not in Contact, Not to Scale, Open Top, Pressure Red Valve, Roof Manifold, Standpipe, Top of Beam, Top of Pipe, Top of Steel, Unless Otherwise Noted, Centerline, Not Automatic Sprinklers, Open to Above

CONTRACT RESPONSIBILITIES

ITEM	FFC	OTHERS
STREET CONN		
EXCAVATION		
FLUSHING		
WIRING		
PAINTING		
TAMPERS SYSTEMS		
FLOW SWITCHES		
STREET CONN		

SPRINKLER HEAD LEGEND

SYMBOL	MAKE	MODEL	SIN	FINISH	TEMP	NPT	DRIFICE	K-FACTOR	TEMP	TYPE	TOTAL
...	121

SUBMITTALS

SENT TO	DATE SENT MM/DD/YY	DATE RECEIVED
...

HYATT PLACE PORTLAND - OLD PORT

PORTLAND, MAINE

FIRST & SECOND FLOOR PLANS

CONTRACT WITH CONSIGLI CONSTRUCTION

REVISIONS

NO.	DATE	DESCRIPTION
1	9 JUL 13	REVISIONS TO FF & DRY SVCS

SCALE AS NOTED

DRAWN BY ARS

CHECKED BY CDS

DATE 22 JUNE 2013

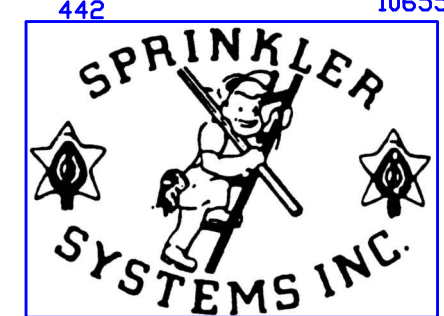
TOTAL SPRKS DN JOB 830

SHEET# FP-1

1 OF 4

JUH

12-101



P.O. BOX 1395
LEWISTON MAINE
04243-1285