

HOOD INFORMATION - Job#2801927

HOOD NO.	TAG	MODEL	LENGTH	MAX. COOKING TEMP.	EXHAUST PLENUM RISER(S)			TOTAL SUPPLY CFM	HOOD CONSTRUCTION	HOOD CONFIG.			
					WIDTH	HEIGHT	DIA.			END TO END	ROW		
1		5412 SND-2+PSP-F	10' 10.00"	450 Deg.	2500	4'	18'	2500	-0.476'	1960	430 SS Where Exposed	ALDNE	ALDNE

HOOD INFORMATION

HOOD NO.	TAG	TYPE	FILTER(S)			EFFICIENCY @ 9 MICRONS	QTY.	TYPE	LIGHT(S)			UTILITY CABINET(S)		FIRE SUPPRESSING PIPING WGT	HOOD EXPANDING WGT
			QTY.	HEIGHT	LENGTH				WIDTH	TYPE	SIZE	MODEL #	QUANTITY		
1		SS Baffle with Handles	8	16'	16'	30%	4	L55 Series E86	ND					511	LBS

HOOD OPTIONS

HOOD NO.	TAG	OPTION
1		FIELD WRAPPER - 4.00" High Front, Left, Right BACKSPASH 60.00" High X 130.00" Long 430 SS Vertical LEFT QUARTER END PANEL 23" Top Width, 0" Bottom Width, 23" High 430 SS RIGHT QUARTER END PANEL 23" Top Width, 0" Bottom Width, 23" High 430 SS

PERFORATED SUPPLY PLENUM(S)

HOOD NO.	TAG	POS.	LENGTH	WIDTH	HEIGHT	RISER(S)				
						TYPE	WIDTH	LENGTH	DIA.	CFM
1		Front	130"	20"	6'	MUA	12"	24"	653	0.190"
						MUA	12"	24"	653	0.190"
						MUA	12"	24"	653	0.190"

CAPTIVEAIRE SYSTEMS RECOMMENDS THE USE OF LISTED, PRE-FABRICATED ROUND GREASE EXHAUST DUCT TO REDUCE STATIC PRESSURE IN THE SYSTEM, MINIMIZE INSTALLATION AND INSPECTION TIMES, AND ENSURE DUCT IS LIQUID TIGHT

VERIFY CEILING HEIGHT

_____ "

HEIGHT REQUIRED TO VERIFY THAT HOOD FITS SPACE AND TO SIZE THE ENCLOSURE PANELS

HVAC DISTRIBUTION NOTE

IT IS RECOMMENDED NOT TO INSTALL HIGH VELOCITY DIFFUSERS OR HVAC RETURNS WITHIN TEN (10) FEET OF THE EXHAUST HOOD. PERFORATED DIFFUSERS ARE RECOMMENDED.

CUSTOMER APPROVAL TO MANUFACTURE:

Approved as Noted

Approved with NO Exception Taken

Revised and Resubmit

SIGNATURE _____ Date _____

Your Title _____



JOB#2801927	JOB #	2801927
DATE 10/27/2016	DATE	10/27/2016
DWG # 1	DRAWN BY	REY
SCALE 3/8" = 1'-0"		

JOB#2801927 - Portland ME

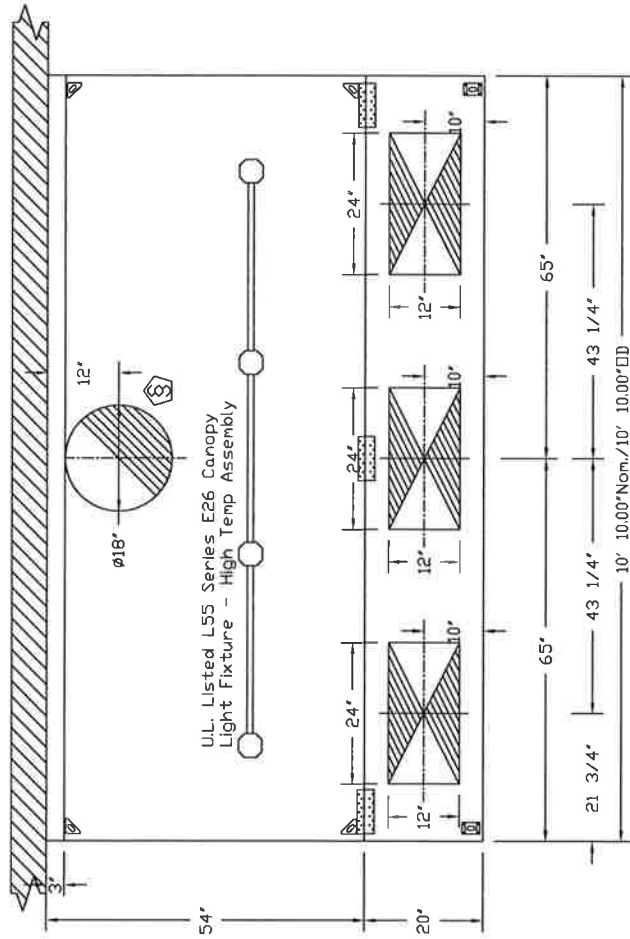
LOCATION PORTLAND, ME, 04101

DATE 10/27/2016

DWG # 1

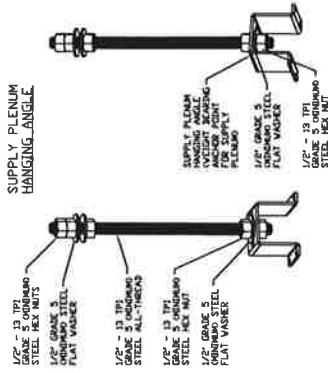
DRAWN BY REY

SCALE 3/8" = 1'-0"



U.L. Listed L55 Series E26 Canopy Light Fixture - High Temp Assembly

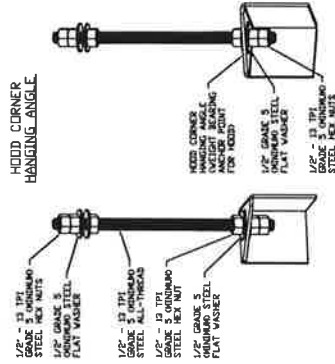
PLAN VIEW - Hood #1
10' 10.00" LONG 5412SND-2-PSP-F



SUPPLY PLENUM HANGING ANGLE

ASSEMBLY INSTRUCTIONS:

HANGING ANGLE MUST BE SUPPORTED WITH 1/2" - 13 TPI GRADE 5 (MINIMUM) ALL-THREAD. SANDWICH HANGING ANGLES AND CEILING ANCHOR POINTS WITH 1/2" GRADE 5 (MINIMUM) STEEL FLAT WASHERS AND 1/2" - 13 TPI GRADE 5 (MINIMUM) HEX NUTS AS SHOWN. MUST USE DOUBLED HEX NUT CONFIGURATION ABOVE CEILING ANCHORS. SINGLE HEX NUT BENEATH HANGING ANGLE IS ACCEPTABLE FOR PSP HANGING ANGLES. MAINTAIN 1/4" OF EXPOSED THREADS BENEATH BOTTOM HEX NUT. TORQUE ALL HEX NUTS TO 57 FT-LBS.



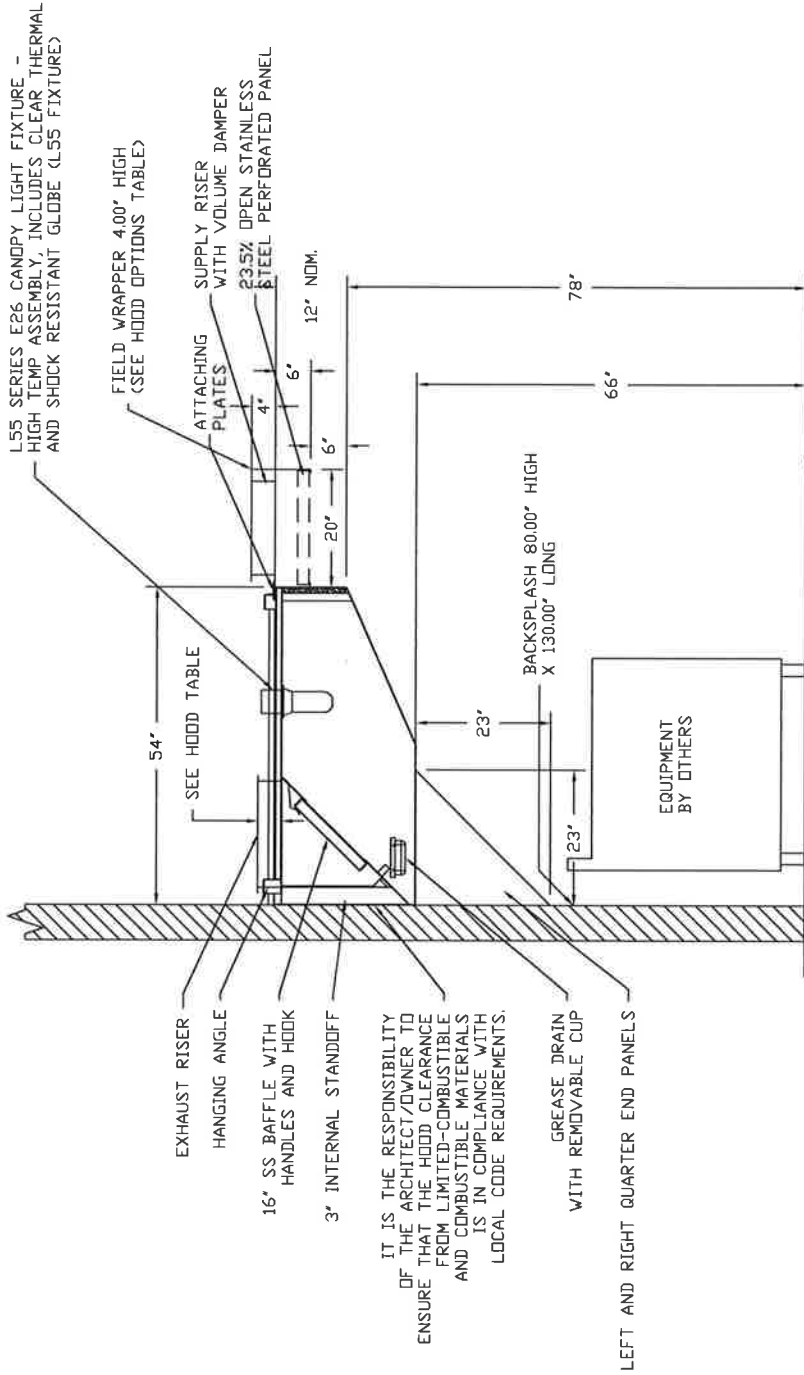
HOOD CORNER HANGING ANGLE

JOB/EVD - Portland ME	LOCATION PORTLAND, ME, 04101
DATE 10/27/2016	JOB # 2801927
DWG # 2	DRAWN BY
REV.	SCALE 3/8" = 1'-0"

CAPTIVEAIRE



Intertek



SECTION VIEW - MODEL 5412SND-2-PSP-F
HOOD - #1

JOB/EVD - Portland ME	
LOCATION PORTLAND, ME, 04101	
DATE	JOB #
10/27/2016	2801927
DWC # 3	DRAWN BY
REV.	SCALE 3/8" = 1'-0"

CAPTIVEAIRE



EXHAUST FAN INFORMATION -- Job#2801927

FAN UNIT NO.	TAG	FAN UNIT MODEL #	CFM	ESP.	RPM	HP.	B.H.P.	φ	VOLT	FLA	WEIGHT (LBS.)	SDNES
1		RMFI150CA	2500	1.750	1685	2.000	1.1810	3	208	5.9	224	15.6

MUA FAN INFORMATION -- Job#2801927

FAN UNIT NO.	TAG	FAN UNIT MODEL #	BLOWER	HOUSING	CFM	ESP.	RPM	HP.	B.H.P.	φ	VOLT	FLA	WEIGHT (LBS.)	SDNES	BURNER EFFICIENCY(%)
2		A1-D.250-G10	G10	A1-D.250	1960	1.000	1289	1.500	1.1600	3	208	4.6	575	24	92

GAS FIRED MAKE-UP AIR UNITS(S)

FAN UNIT NO.	TAG	INPUT BTUS	OUTPUT BTUS	TEMP. RISE	REQUIRED INPUT GAS PRESSURE	GAS TYPE
2	161061	148176	70 deg F	7 in. w.g. - 14 in. w.g.	Natural	

FAN OPTIONS

FAN UNIT NO.	TAG	OPTION (Qty. - Descr.)
1		1 - Companion Flange Inlet - RMFI / BMFI / DMFI 150. 1 - Companion Flange Outlet - RMFI / BMFI / DMFI 150. 1 - Disconnect Switch - Used On All RMFI, BMFI & DMFI Fans - Disconnect Is NEMA1 For Indoor Use Only - Disconnect Switch Ships Loose, Single & Three Phase Option. 1 - Ceiling Spring Isolators With Mounting Brackets - RMFI / BMFI 150. 1 - Motorized Backdraft Damper for A1-D Housing 1 - Low Fire Start 1 - Inlet Pressure Gauge, 0-35" 1 - Manifold Pressure Gauge, -5 to 15" w.c 1 - D1 Indoor Hanging Option - Includes 2 HSM25 Hanging Spring Isolators per Uni-Strut
2		

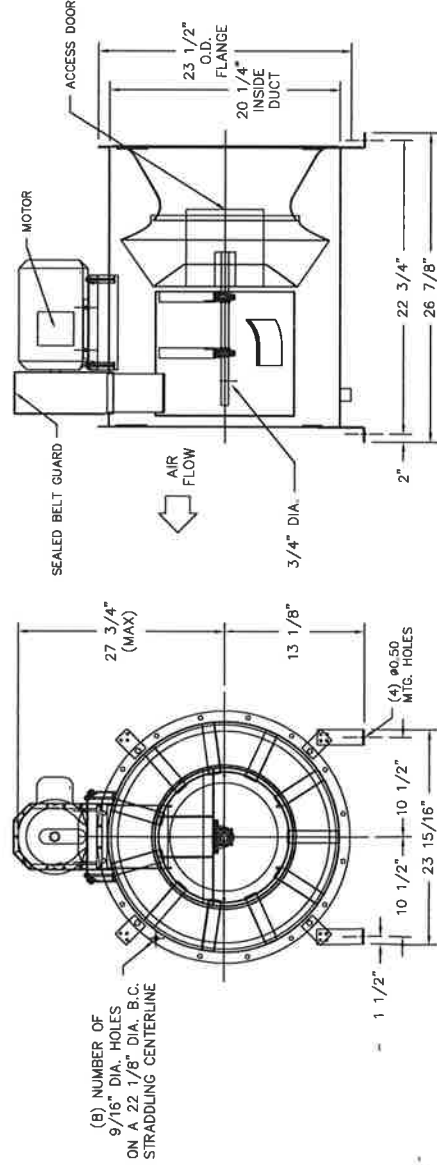
FEATURES:

- LEVEL II CONSTRUCTION - UL 762.
- HIGH PRESSURE
- STRAIGHT THROUGH AIR FLOW.
- WHEELS BACKWARD INCLINED, NON-OVERLOADING.
- WHEELS STATICALLY AND DYNAMICALLY BALANCED.
- HEAVY GAUGE STEEL CONSTRUCTION.
- MULTIPLE ACCESS DOORS FOR WHEEL CLEANING.
- BELT TUBES AND GUARDS.
- EXTENDED LUBE LINES.
- 2" GREASE DRAIN.

OPTIONS

- COMPANION FLANGE INLET - RMFI / BMFI / DMFI 150.
- COMPANION FLANGE OUTLET - RMFI / BMFI / DMFI 150.
- DISCONNECT SWITCH - USED ON ALL RMFI, BMFI & DMFI FANS - DISCONNECT IS NEMA1 FOR INDOOR USE ONLY - DISCONNECT SWITCH SHIPS LOOSE, SINGLE & THREE PHASE OPTION.
- CEILING SPRING ISOLATORS WITH MOUNTING BRACKETS - RMFI / BMFI 150.

FAN #1 RMFI150CA -- EXHAUST FAN



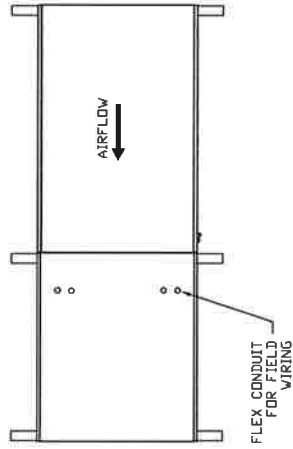
CAPTIVEAIR



JOB#EVD - Portland ME
 LOCATION PORTLAND, ME, 04101
 DATE 10/27/2016 JOB # 2801927
 DWG # 5 DRAWN BY
 REV. SCALE 3/8" = 1'-0"

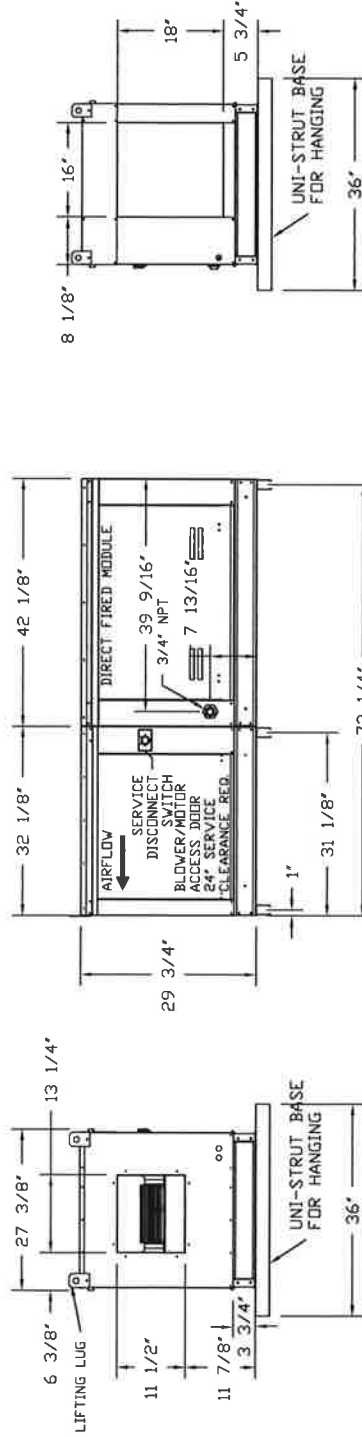
FAN #2 A1-D-250-G10 - HEATER

1. DIRECT GAS FIRED HEATED MAKE UP AIR UNIT WITH 10" BLOWER
2. SIDE DISCHARGE - AIR FLOW RIGHT -> LEFT
3. MOTORIZED BACK DRAFT DAMPER 16" X 18" FOR SIZE 1 STANDARD & MODULAR DIRECT FIRED HEATERS W/EXTENDED SHAFT, STANDARD GALVANIZED CONSTRUCTION, 3/4" REAR FLANGE, LF120S ACTUATOR INCLUDED
4. LOW FIRE START - ALLOWS THE BURNER CIRCUIT TO ENERGIZE WHEN THE MODULATION CONTROL IS IN A LOW FIRE POSITION.
5. GAS PRESSURE GAUGE, 0-35", 2.5" DIAMETER, 1/4" THREAD SIZE
6. GAS PRESSURE GAUGE, -5 TO +15 INCHES WC., 2.5" DIAMETER, 1/4" THREAD SIZE
7. INDOOR HANGING CRADLE FOR THE SIZE 1 DIRECT FIRED UNIT. 2 HSA12S HANGING ISOLATORS PER UNI-STRUT INCLUDED.



SUPPLY SIDE HEATER INFORMATION

WINTER TEMPERATURE = 10°F. TEMP. RISE = 70°F.
 BTUS CALCULATED OFF STANDARD AIR DENSITY
 OUTPUT BTUs AT ALTITUDE OF 0.0 ft. = 148176
 INPUT BTUs AT ALTITUDE OF 0.0 ft. = 161061

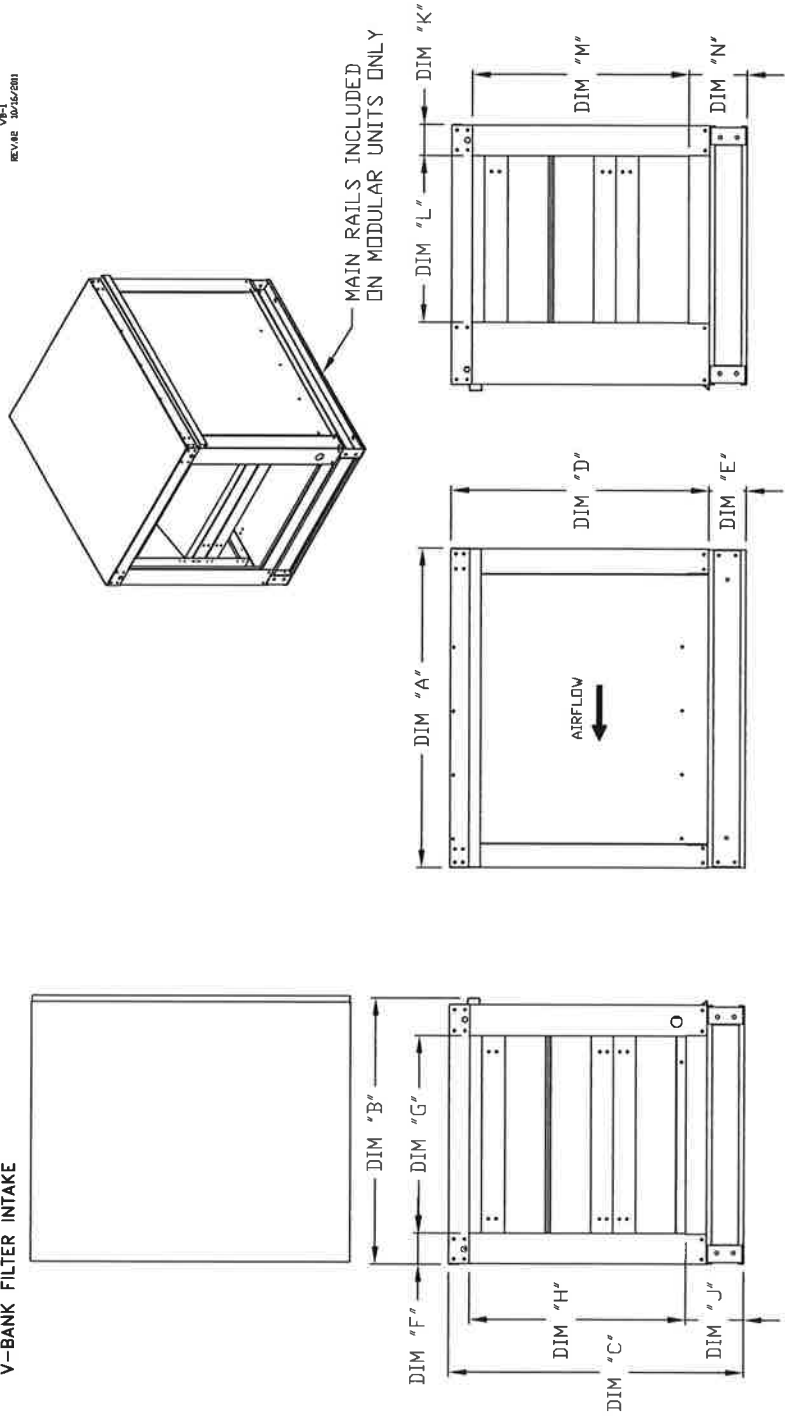


JOBEVD - Portland ME	JOB #	2801927
LOCATION PORTLAND, ME, 04101	DATE	10/27/2016
	DWG #	6
	DRAWN BY	REV.
	SCALE	3/8" = 1'-0"

CAPTIVEAIRE

V-BANK FILTER INTAKE

VP-1
REVISED 10/16/2011



UNIT INFORMATION		UNIT DIMENSIONS				DISCHARGE OPENING				INTAKE OPENING								
MODEL	WEIGHT	FILTER SIZE	& QTY	MAX. FILTER VELOCITY	A	B	C	D	E	F	G	H	I	J	K	L	M	N
VBI-01	95 LBS	20"x25"x2"	(3)	#6500 CFM = 754 FPM	32-1/8	26-3/4	26-3/4	26	3-3/4	3-1/8	19-7/8	21-7/8	21-7/8	15-3/4	3-1/8	16-3/4	21-7/8	15-3/4

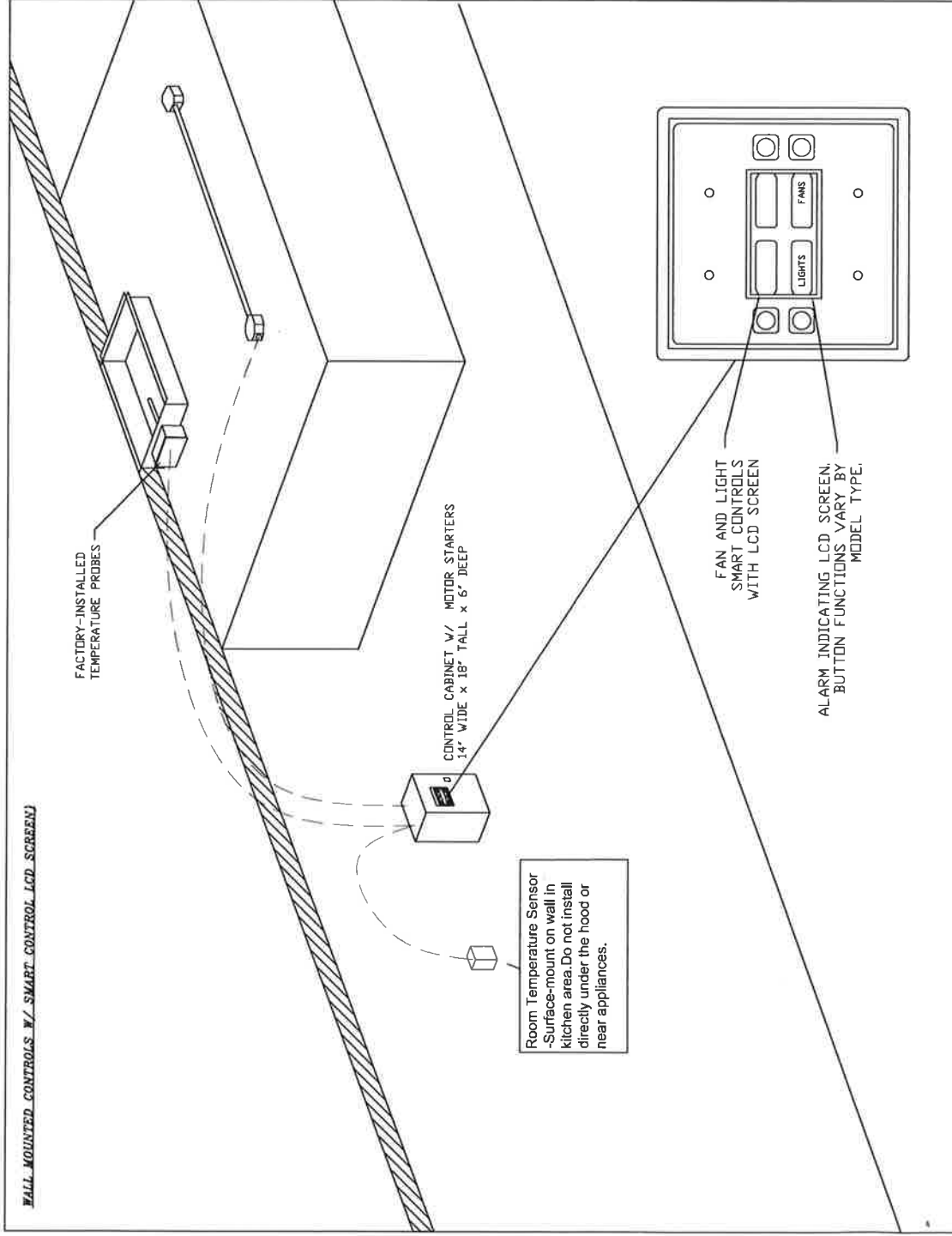
ALL DIMENSIONS ARE NOMINAL AND GIVEN IN INCHES.

CAPTIVEAIRE

JOB/EVD - Portland ME
 LOCATION PORTLAND, ME, 04101
 DATE 10/27/2016 JOB # 2801927
 DWG # 4 DRAWN BY
 REV. SCALE 3/8" = 1'-0"

ELECTRICAL PACKAGES - Job#2801927

NO.	TAG	PACKAGE #	LOCATION	SWITCHES		OPTION	FANS CONTROLLED				
				LOCATION	QUANTITY		TYPE	HP.	VOLT	FLA	
1		SC-31110FP	Wall Mount In SS Box	SS Wall Mount Box	1 Light	Smart Controls Thermostatic Control	Exhaust	3	2,000	208	5.9
					1 Fan		Supply	3	1,500	208	4.6



JOB#	2801927
DATE	10/27/2016
DWC #	11
REV.	

JOBEVD - Portland ME
 LOCATION PORTLAND, ME, 04101
 DRAWN BY
 SCALE 3/8" = 1'-0"



CAPTIVEAIR

The Electrical Package, typically FP, is designed to thermostatically activate the exhaust fans for an exhaust hood whenever elevated temperatures are sensed in the exhaust system. This option will meet the requirements of IMC 507.2.1.1 by providing a thermostat(s) mounted in the duct or hood riser to sense increased exhaust temperatures. Controls shall be listed by ETL (UL 508A). The control enclosure shall be NEMA 1 rated and listed for installation inside of the exhaust hood utility cabinet. The control enclosure may be constructed of stainless steel or painted steel.

Temperature probes(s) located in the duct riser shall be constructed of Stainless Steel. A room temperature sensor is also provided for field installation in the kitchen space in order to start the fans) based on the temperature differential between the room and the exhaust air in the duct, rather than fixed set-points. The system is factory pre-set to activate the fans at 10 deg F above the room temperature.

Once the duct temperature reaches the activation point, the exhaust fans will be activated. The controls also provide hysteresis to prevent cycling of the fans after the cooking appliances have been turned off and the heat in the exhaust system is reduced. The hysteresis is factory set 2 degrees and will keep the exhaust running until the temperature falls 2 degrees below the activation set point. A hysteresis timer also exists to keep the fans running for at least 30 min after being activated by the temperature rise.

The activation and hysteresis settings may be field adjusted on the board LCD interface located inside the control enclosure to meet application needs. The panel is factory configured to shut down supply fans, turn on the exhaust fans and turn off the hood lights in a fire condition.

JOBEVD - Portland ME
LOCATION PORTLAND, ME, 04101
DATE 10/27/2016
DWC # 14
REV.

CAPTIVEAIRE



JOB #	2801927
DRAWN BY	
SCALE	3/8" = 1'-0"

