

2 1/2" STEEL STUDS.	102
NON-RATED	
3 5/8" STEEL STUDS.	103
NON-RATED	

3 5/8" STEEL STUDS W/ 3 1/2" S.A.B.	XXX
ONE HR FIRE-RATED	UL NO. U465
FIRE RATING	UL DESIGN NO. WHERE APPLICABLE

- GENERAL NOTES:
- SEE WALL SECTIONS & DETAIL SHEETS FOR CONNECTIONS/DETAILS OTHER THAN SHOWN.
  - REFER TO UL DESIGN GUIDE FOR SPECIFIC COMPONENTS AND CONSTRUCTION DETAILS FOR RATED ASSEMBLIES.
  - ALL FIRE RATED PARTITIONS SHALL BE STENCILED ON WALL SURFACE ABOVE CEILING LINE INDICATING RATING IN RED OR ORANGE PAINT ON EACH SIDE OF PARTITION.
  - EXTEND PARTITIONS TO UNDERSIDE OF FLOOR/ROOF DECK U.N.O., SEAL TO DECK FOR SMOKE AND SOUND CONTROL AND FILL VOIDS IN BETWEEN.
  - WHERE OCCURS, FRAME GWB AROUND BOTH SIDES OF BEAMS/JOISTS WHERE PARTITION INTERSECTS STRUCTURAL MEMBERS TO MAINTAIN CONTINUITY OF PARTITION TO UNDERSIDE OF DECK.
  - CONTRACTOR IS RESPONSIBLE TO VERIFY FIELD CONDITIONS WHICH MAY VARY FROM TYPICAL DETAIL SHOWN ON DRAWINGS. CONTRACTOR TO MODIFY CLOSURE DETAILS TO MEET ACTUAL CONDITIONS AND MAINTAIN CONTINUITY OF PARTITION FROM FLOOR TO DECK ABOVE.

**CODE ANALYSIS**  
 Maine Unified Energy and Building Code, as well as Chapter 10 Fire Prevention and Protection data was submitted and fully approved under the previous permit for the Hyatt Place Old Port Hotel. Key NFPA and IBC code findings identified below.

**KEY NFPA and IBC Findings**  
 Use ASSEMBLY (A-2)  
 Type of Construction: TYPE 1-B (IBC), Type 332 (NFPA 101)  
 Fully Sprinklered  
 Fire Alarm provided  
 Ground Floor = 1,150 SF  
 Mezzanine = 447 SF (floor/ceiling assembly and structural walls 2 HR rated per IBC table 601 for type 1B)  
 Total SF = 1,597 SF  
 Occupant Load = 61 (See table this page)  
 Two means of egress required.

Door Panic Hardware NOT required by NFPA since occupant load <100 (NFPA 101 12.2.2.3)  
 Door Panic Hardware REQUIRED by IBC since Occupant load>50 (IBC 1008.1.10)  
 Therefore panic hardware required at exit door.

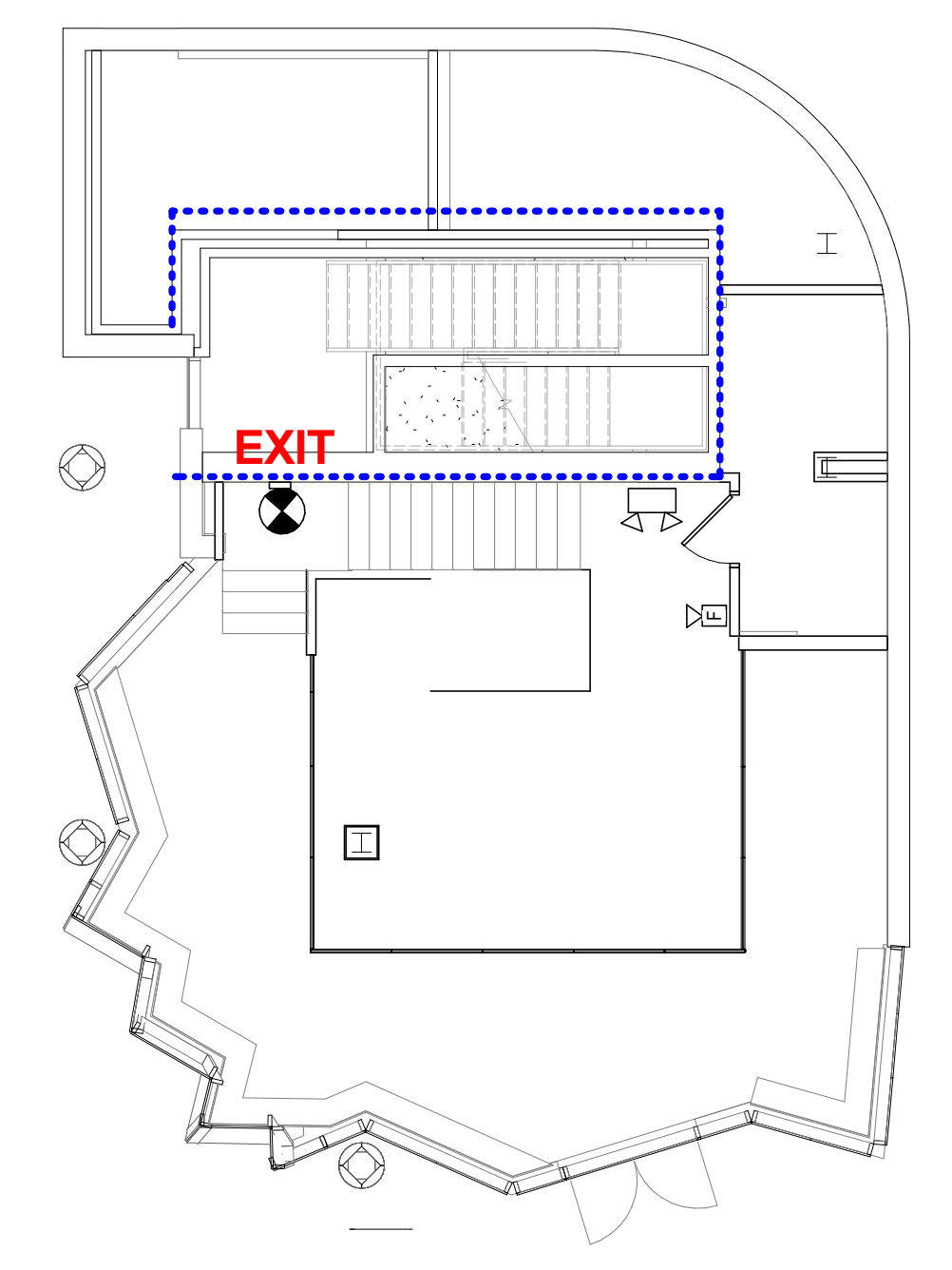
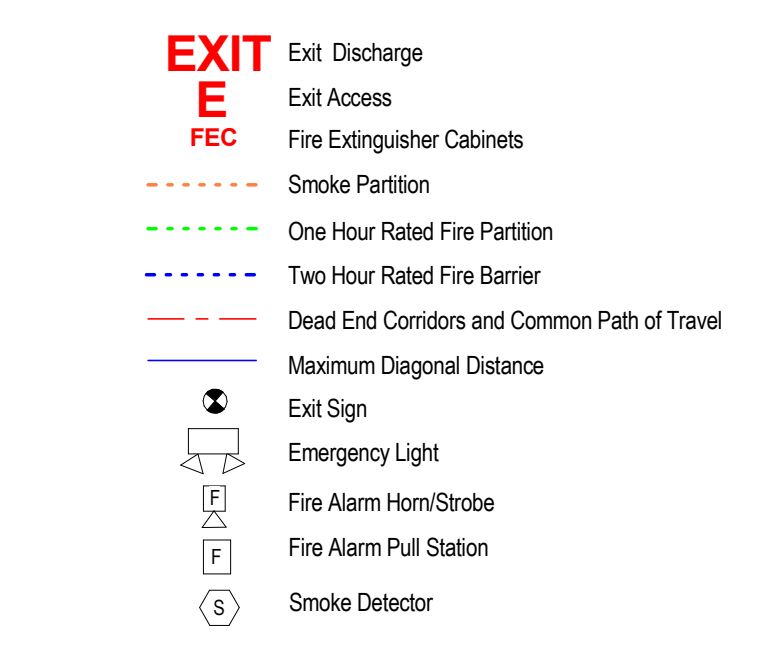
Common Path of Egress Travel: 75' from any point not serving more than 50 occupants.  
 NFPA 12.2.5.1.2, IBC 1028.8(1).  
 Dead End Corridors: < 20'  
 NFPA 12.2.5.1.2, IBC 1018.4

Minimum Corridor Width = 36" where serving occupant load < 50 persons, 44" where serving occupant load > 50 persons.  
 NFPA 12.2.3.8, 7.3.4.1.1(2), IBC 1018.2(2)  
 Therefore corridor to dishwashing/restrooms = 36" since occupant load < 50 persons.

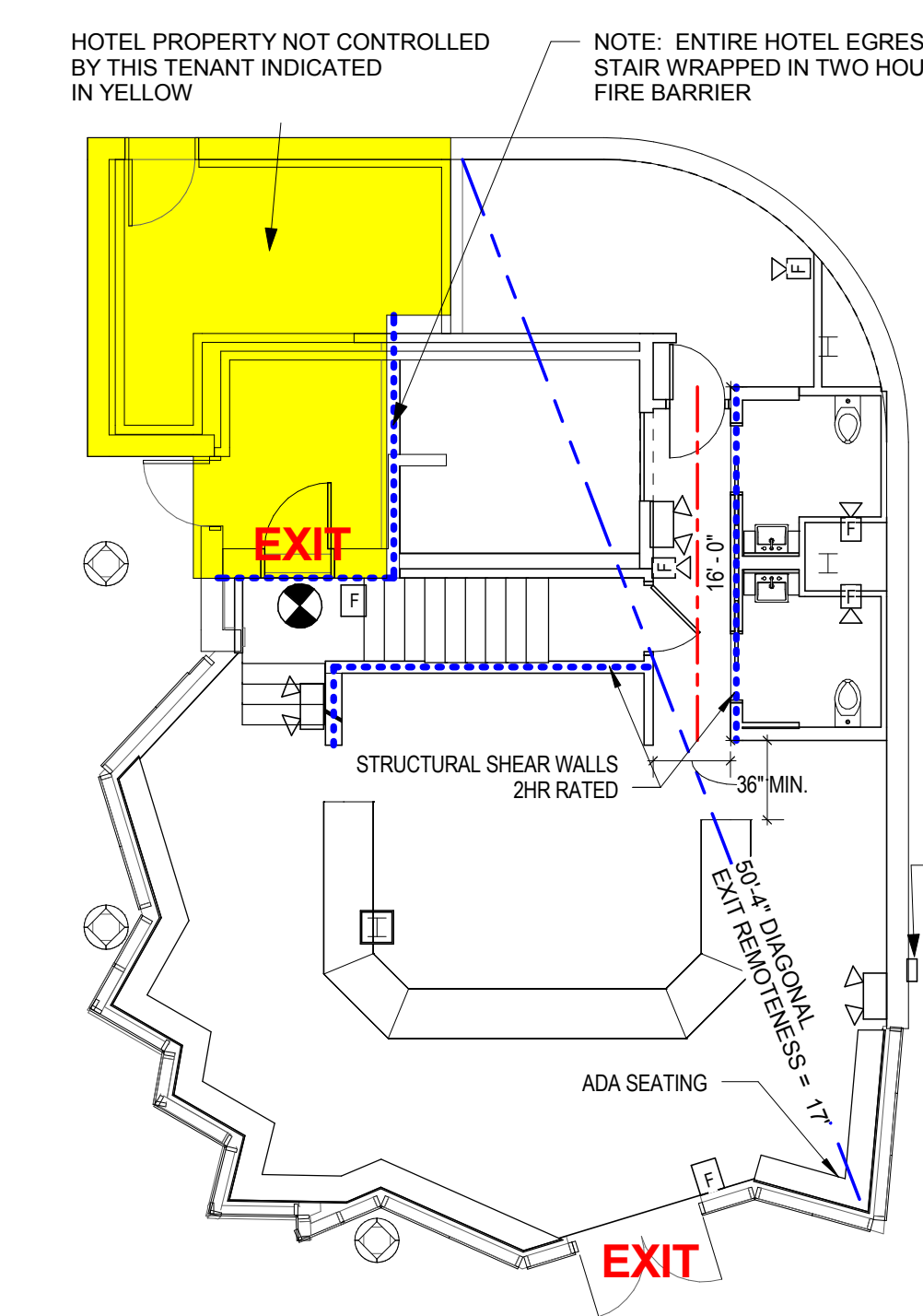
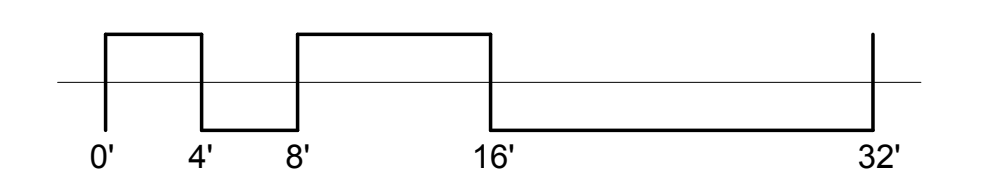
Exit remoteness calculated by 1/3 diagonal rule (IBC 1015.2.1(2)) = 17'  
 Mezzanine: < 1/2 SF of floor area in room which mezzanine opens onto. IBC 505.2(2)  
 Single means of egress from mezzanine permitted by IBC table 1015.1 and 505.3 (max. common path of travel = 75').  
 For fire alarm and egress purposes the second floor mezzanine is evaluated as a second story according to IBC table 1021.2.  
 Mezzanine occupant load = 20.

Back storage of mezzanine not required to be open to room below per IBC 505.4(1)  
 Fire suppression required above and below mezzanine per IBC 505.5.2

**Key ADA findings:**  
 Sec. 226.1 - at least 5% of seating shall be accessible and comply with sec. 902. 40 seats \* 5% = 2 seats.  
 Sec. 902 - Dining surface height between 28" and 34".  
 Sec. 305 - 30" x 48" clear space at accessible seats.  
 Sec. 306 - toe space (9" min.) at accessible seats.



2 Code Plan Mezzanine  
 1/8" = 1'-0"



1 Code Plan Ground Floor  
 1/8" = 1'-0"

3 WALL TYPES INTERIOR  
 1 1/2" = 1'-0"

**Shield Industries, Inc.**

**ST-2 2 HOUR FIRE ASSEMBLY - 8" WF24 OR LARGER STEEL SECTION**  
 Typical Assembly - 8WF24 or larger, used horizontally as a beam

TO ACHIEVE 2 HOUR FIRE RATING:  
 PREPARATION OF STEEL MEMBER: CLEAN AND APPLY ALKYD PRIMER @ 2.5 MIL.  
 APPLY 60 MIL THICKNESS (DRY) OF ForceField® FireGuard® E-84 TO ALL EXPOSED SIDES OF STEEL BEAM.

60 MIL THICKNESS (DRY) OF FFG E-84 INTUMESCENT COATING

SCALE: N.T.S.

FIRE TEST ENDURANCE RATING:	2 HOUR
STANDARD TESTED TO:	ASTM E 119-11a Structural Steel Section; NFPA 251; UL 263; ULCC 5-101-07 with No Load Capacity, No Restraint, Small Scale Test
FIRE TESTED LABORATORY:	GUARDIAN FIRE TESTING LABORATORIES, INC. 480 HINMAN AVE. BUFFALO, NY 14216
REPORT NO.:	GL 115811
PRODUCT:	ForceField® FireGuard® E-84 INTUMESCENT COATING (FFG E-84)
MANUFACTURER:	SHIELD INDUSTRIES, INC. 131 SMOKEHILL LANE WOODSTOCK, CA 95086

SEE MANUFACTURER APPLICATION INSTRUCTIONS AND SPECIFICATIONS FOR SURFACE PREPARATION AND APPLICATION PROCESS

**Shield Industries, Inc.**

**ST-18 2 HOUR FIRE ASSEMBLY - MEDIUM WEIGHT STRUCTURAL STEEL COLUMN**  
 TYPICAL ASSEMBLY - MEDIUM WEIGHT STRUCTURAL STEEL MEMBER USED VERTICALLY AS A COLUMN  
 Medium weight defined as 10 LBS-23.9 LBS. per linear foot of material

TO ACHIEVE 2 HOUR RATING (USING CRITERIA 1300° F AVERAGE):  
 PREPARATION OF STEEL MEMBER: CLEAN AND APPLY COMPATIBLE STEEL PRIMER @ 2.5 MIL.  
 APPLY 60 MIL THICKNESSES (DRY) OF ForceField® FireGuard® E-84 TO ALL EXPOSED SIDES OF STEEL COLUMN.

60 MIL THICKNESS (DRY) OF FFG E-84 INTUMESCENT COATING

SCALE: N.T.S.

FIRE TEST ENDURANCE RATING:	2 HOUR
STANDARD TESTED TO:	ASTM E 818-88 STRUCTURAL STEEL SECTION; NFPA 251; UL 263; ULCC 5-101-07 WITH NO LOAD CAPACITY, NO RESTRAINT, SMALL SCALE TEST
FIRE TESTED LABORATORY:	GUARDIAN FIRE TESTING LABORATORIES, INC. 480 HINMAN AVE. BUFFALO, NY 14216
REPORT NO.:	GL 15681
PRODUCT:	ForceField® FireGuard® E-84 INTUMESCENT COATING (FFG E-84)
MANUFACTURER:	SHIELD INDUSTRIES, INC. 131 SMOKEHILL LANE WOODSTOCK, CA 95086

SEE MANUFACTURER APPLICATION INSTRUCTIONS AND SPECIFICATIONS FOR SURFACE PREPARATION AND APPLICATION PROCESS

Occupant Load Schedule				
Name	Number	Area	Occupant Loads (NFPA 101 7.3.1.2)	Occ. #
Toilet	101	38 SF	100 gross	1
Toilet	102	40 SF	100 gross	1
KITCHEN/BAR	103	269 SF	100 gross	3
STORAGE	104	24 SF	300 gross	1
DISHWASHING	105	132 SF	100 gross	2
COLD STORAGE	106	95 SF	500 gross	1
CORRIDOR	107	53 SF	100 gross	1
MAIN DINING AREA	108	465 SF	15 net (unconcentrated tables and chairs)	31
MEZZANINE SEATING AREA	201	237 SF	15 net (unconcentrated tables and chairs)	20
MEZZANINE STORAGE	202	100 SF	500 gross	1
MEZZANINE CIRCULATION	203	57 SF	100 gross	1
STAIRS	204	72 SF		1

MAXIMUM OCCUPANT LOAD 61

UL rated assemblies for 2 hour rating on mezzanine steel using intumescent paint.

THIS DRAWING IS THE PROPERTY OF CANAL 5 STUDIO AND IS NOT TO BE COPIED OR REPRODUCED IN PART OR WHOLE. 2014 © CANAL 5 STUDIO

Mark	Date	Description
2	01/22/2015	Addendum #1

ISSUED FOR PERMIT  
 DECEMBER 05, 2014

LIFE SAFETY, CODE AND WALL TYPES

Scale: As indicated

Drawing Number

**A05.1**