

WALL TYPE NOTES TAG NO.

3 5/8" STEEL STUDS W/ 3 1/2" S.A.B.	XXX
ONE HR FIRE-RATED	UL NO. U465
FIRE RATING	UL DESIGN NO. WHERE APPLICABLE

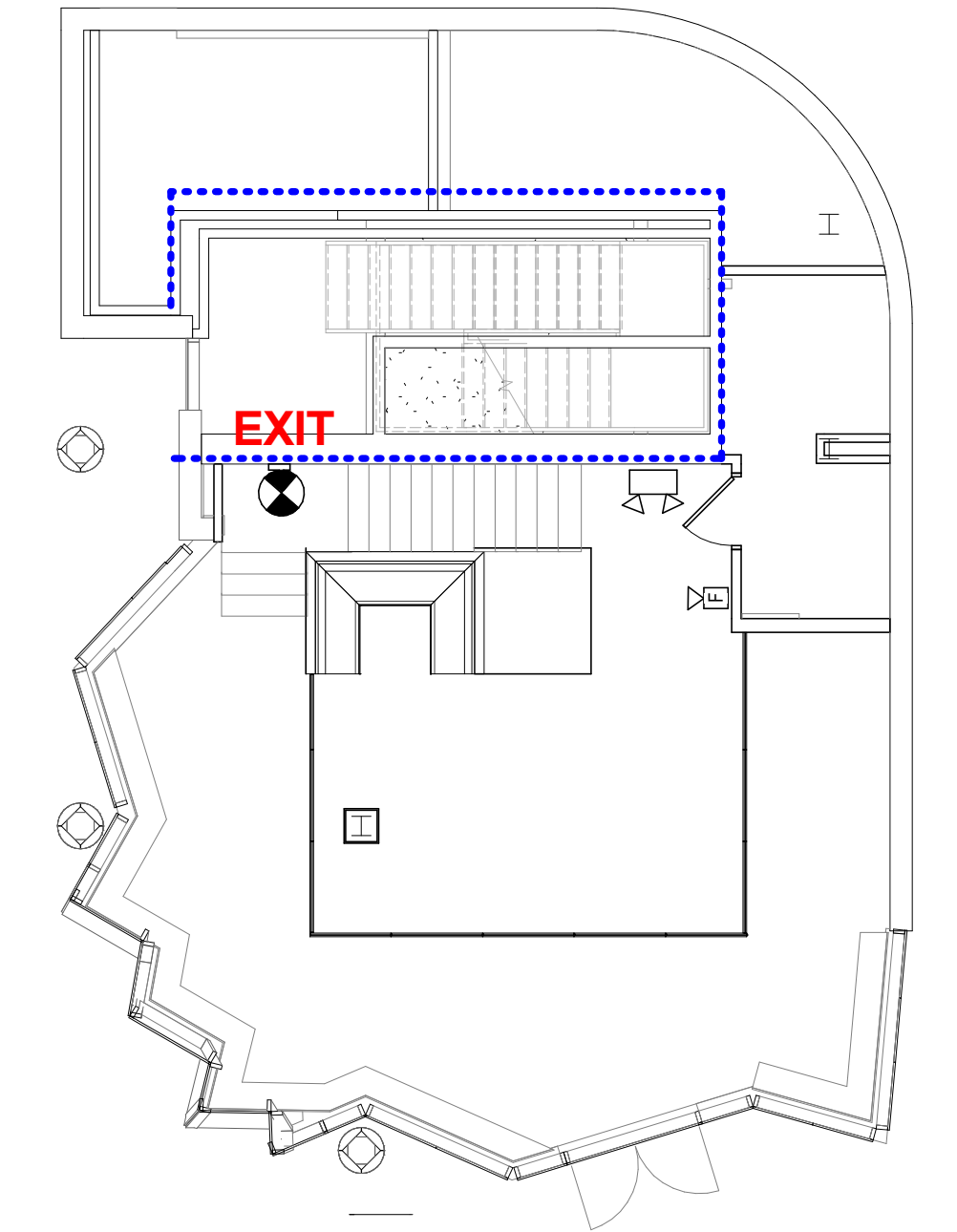
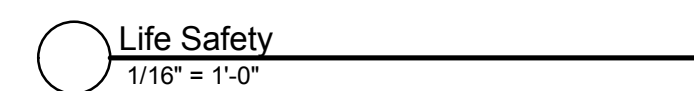
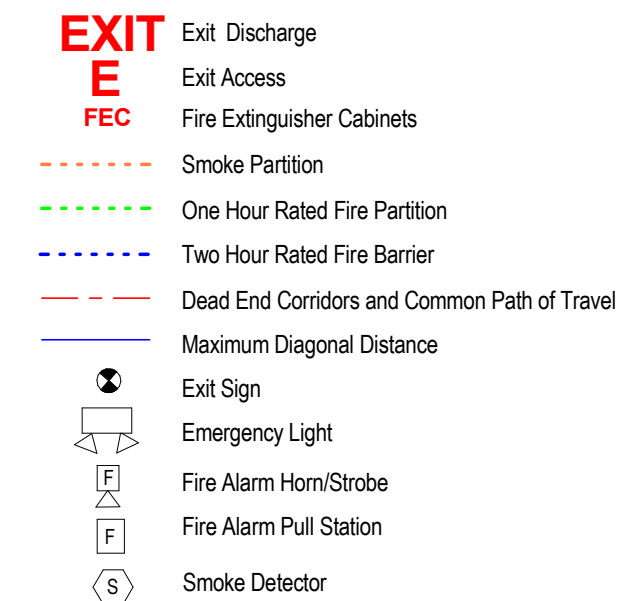
- GENERAL NOTES:
- SEE WALL SECTIONS & DETAIL SHEETS FOR CONNECTIONS/DETAILS OTHER THAN SHOWN.
  - REFER TO UL DESIGN GUIDE FOR SPECIFIC COMPONENTS AND CONSTRUCTION DETAILS FOR RATED ASSEMBLIES.
  - ALL FIRE RATED PARTITIONS SHALL BE STENCILED ON WALL SURFACE ABOVE CEILING LINE INDICATING RATING IN RED OR ORANGE PAINT ON EACH SIDE OF PARTITION.
  - EXTEND PARTITIONS TO UNDERSIDE OF FLOOR/ROOF DECK U.N.O., SEAL TO DECK FOR SMOKE AND SOUND CONTROL AND FILL VOIDS IN BETWEEN.
  - WHERE OCCURS, FRAME GWB AROUND BOTH SIDES OF BEAMS/JOISTS WHERE PARTITION INTERSECTS STRUCTURAL MEMBERS TO MAINTAIN CONTINUITY OF PARTITION TO UNDERSIDE OF DECK.
  - CONTRACTOR IS RESPONSIBLE TO VERIFY FIELD CONDITIONS WHICH MAY VARY FROM TYPICAL DETAIL SHOWN ON DRAWINGS. CONTRACTOR TO MODIFY CLOSURE DETAILS TO MEET ACTUAL CONDITIONS AND MAINTAIN CONTINUITY OF PARTITION FROM FLOOR TO DECK ABOVE.

**CODE ANALYSIS**  
 Maine Unified Energy and Building Code, as well as Chapter 10 Fire Prevention and Protection data was submitted and fully approved under the previous permit for the Hyatt Place Old Port Hotel. Key NFPA and IBC code findings identified below.

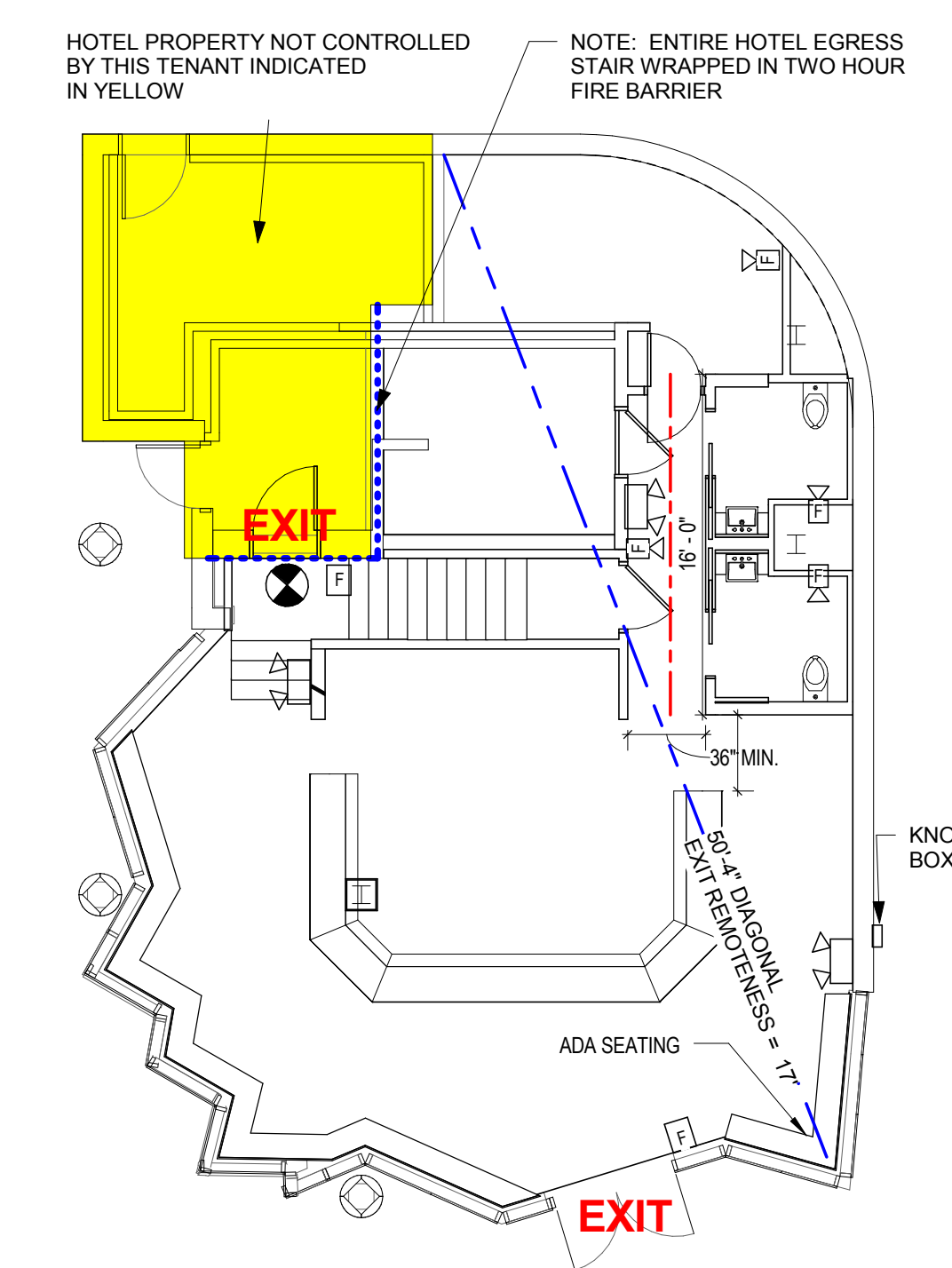
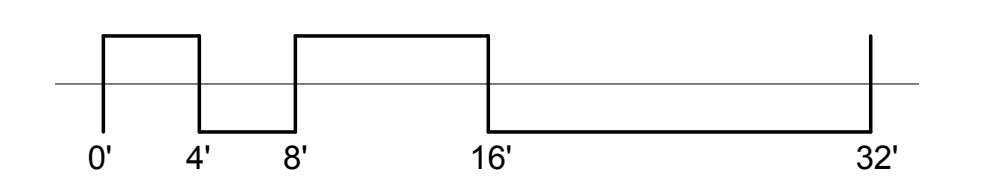
**KEY NFPA and IBC Findings**  
 Use: ASSEMBLY (A-2)  
 Type of Construction: TYPE 1-B (IBC), Type 332 (NFPA 101)  
 Fully Sprinklered  
 Fire Alarm provided.  
 Ground Floor = 1,150 SF  
 Mezzanine = 447 SF  
 Total SF = 1,597 SF  
 Occupant Load = 61 (See table this page)  
 Two means of egress required.

Door Panic Hardware NOT required since occupant load <100 (NFPA 101 12.2.2.3)  
 Common Path of Egress Travel: 75' from any point not serving more than 50 occupants.  
 NFPA 12.2.5.1.2, IBC 1028.8(1).  
 Dead End Corridors: < 20'  
 NFPA 12.2.5.1.2, IBC 1018.4  
 Minimum Corridor Width = 36" where serving occupant load < 50 persons, 44" where serving occupant load > 50 persons. (IBC 1018.2(2))  
 Exit remoteness calculated by 1/3 diagonal rule (IBC 1015.2.1(2)) = 17'  
 Mezzanine: < 1/2 SF of floor area in room which mezzanine opens onto. IBC 505.2(2)  
 Single means of egress from mezzanine permitted by IBC table 1015.1 and 505.3 (max. common path of travel = 75')  
 Mezzanine occupant load = 20.  
 Back storage of mezzanine not required to be open to room below per IBC 505.4(1)  
 Fire suppression required above and below mezzanine per IBC 505.5.2  
 Mezzanine is considered a portion of the story in which it is contained, not considered a separate floor or story. Therefore not subject to IBC table 601 requirements for floor construction assembly ratings.

**Key ADA findings:**  
 Sec. 226.1 - at least 5% of seating shall be accessible and comply with sec. 902. 40 seats \* 5% = 2 seats.  
 Sec. 902 - Dining surface height between 28" and 34".  
 Sec. 305 - 30" x 48" clear space at accessible seats.  
 Sec. 306 - toe space (9" min.) at accessible seats.



2 Code Plan Mezzanine  
 1/8" = 1'-0"



1 Code Plan Ground Floor  
 1/8" = 1'-0"

3 WALL TYPES INTERIOR  
 1 1/2" = 1'-0"

Occupant Load Schedule				
Name	Number	Area	Occupant Loads (NFPA 101 7.3.1.2)	Occ. #
Toilet	101	38 SF	100 gross	1
Toilet	102	39 SF	100 gross	1
KITCHEN/BAR	103	270 SF	100 gross	3
STORAGE	104	24 SF	300 gross	1
DISHWASHING	105	132 SF	100 gross	2
COLD STORAGE	106	95 SF	500 gross	1
CORRIDOR	107	56 SF	100 gross	1
MAIN DINING AREA	108	465 SF	15 net (unconcentrated tables and chairs)	31
MEZZANINE SEATING AREA	201	221 SF	15 net (unconcentrated tables and chairs)	20
MEZZANINE STORAGE	202	100 SF	500 gross	1
MEZZANINE CIRCULATION	203	57 SF	100 gross	1
STAIRS	204	72 SF		

MAXIMUM OCCUPANT LOAD 61

THIS DRAWING IS THE PROPERTY OF CANAL 5 STUDIO AND IS NOT TO BE COPIED OR REPRODUCED IN PART OR WHOLE. 2014 © CANAL 5 STUDIO

Project Status  
**ISSUED FOR PERMIT**  
 DECEMBER 05, 2014

Drawing Title  
**LIFE SAFETY, CODE AND WALL TYPES**

Scale: As indicated

Drawing Number

**A05.1**