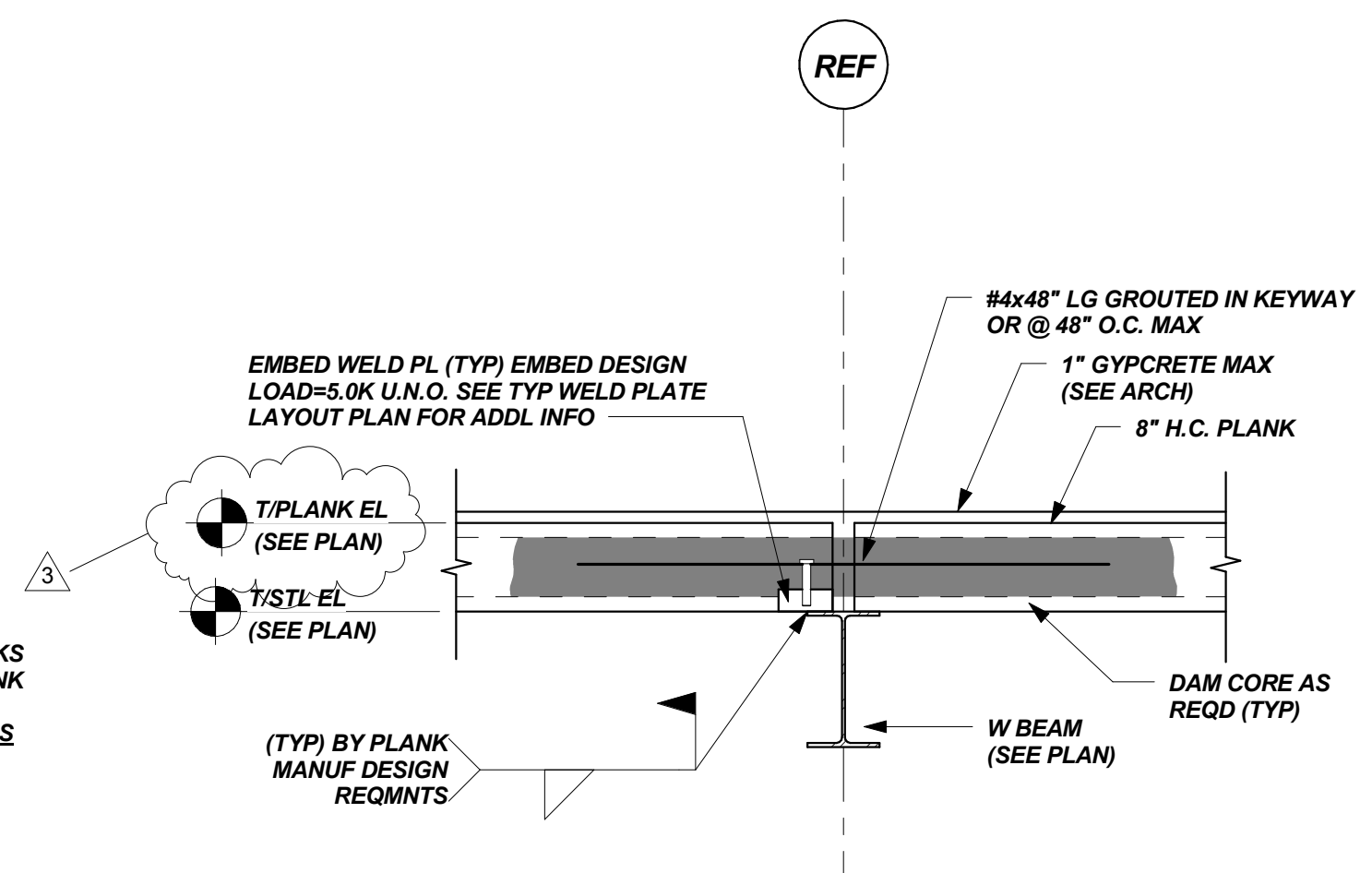
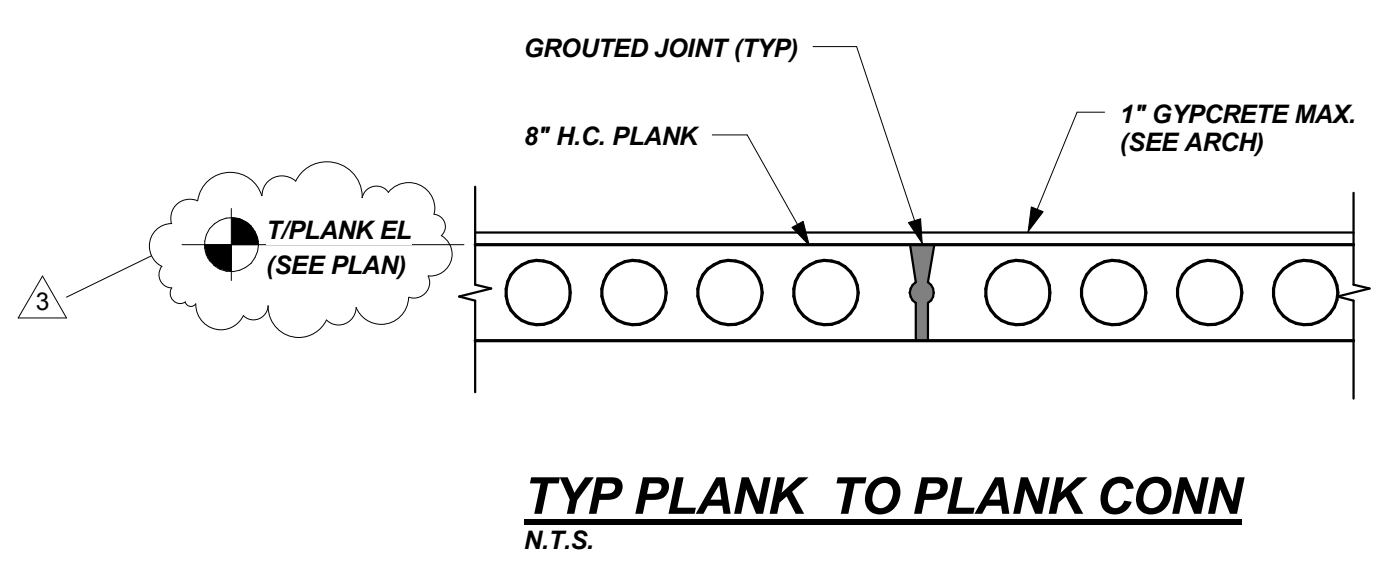


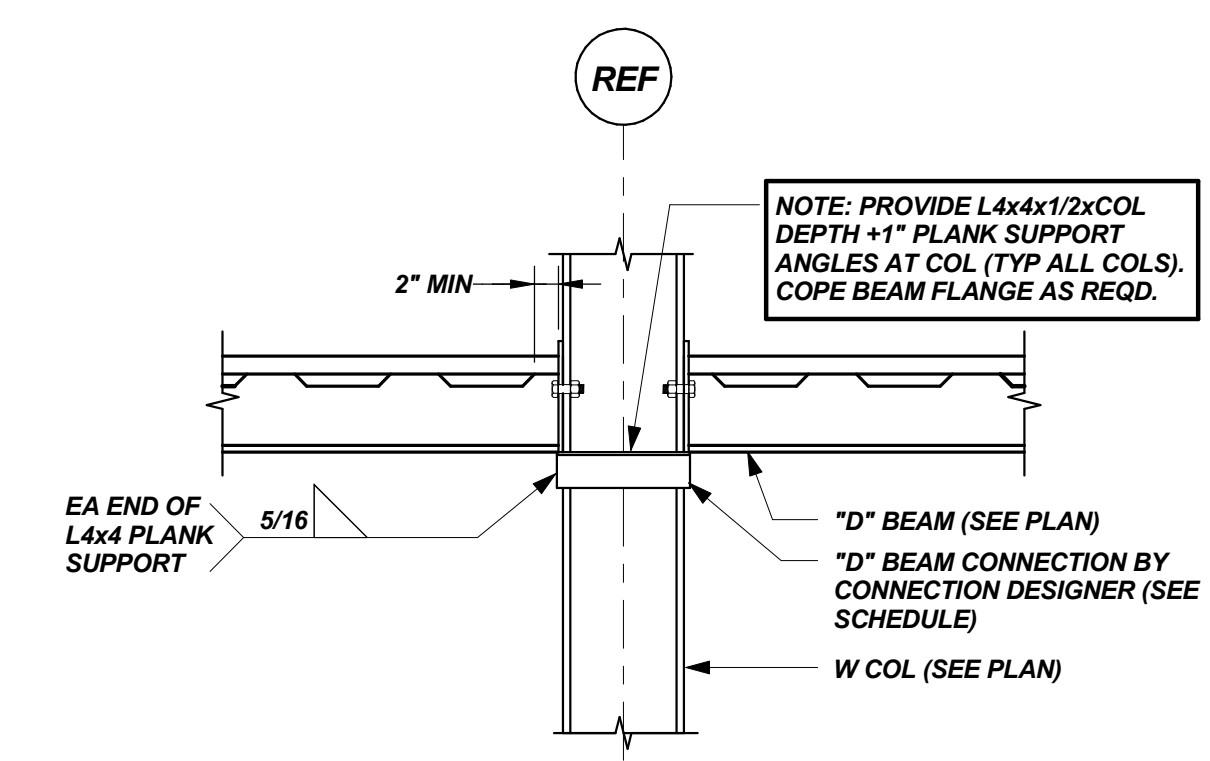
**TYP PLANK BEARING ON "D" BEAM**  
 N.T.S.



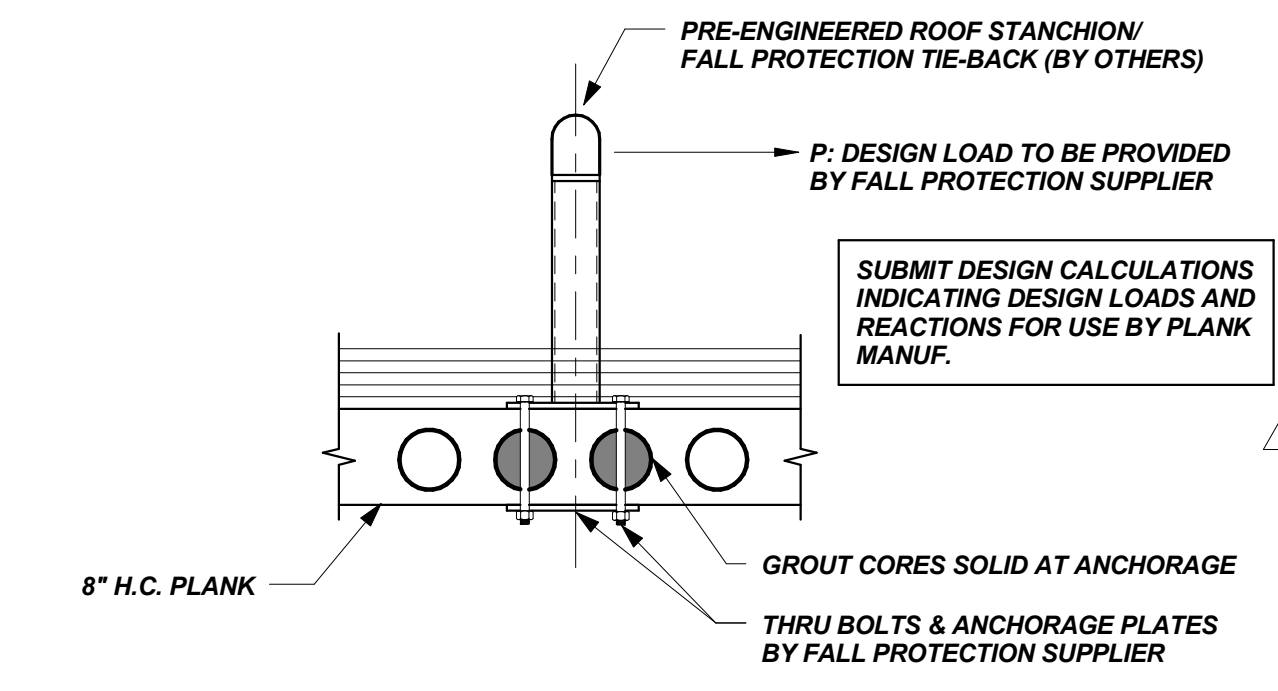
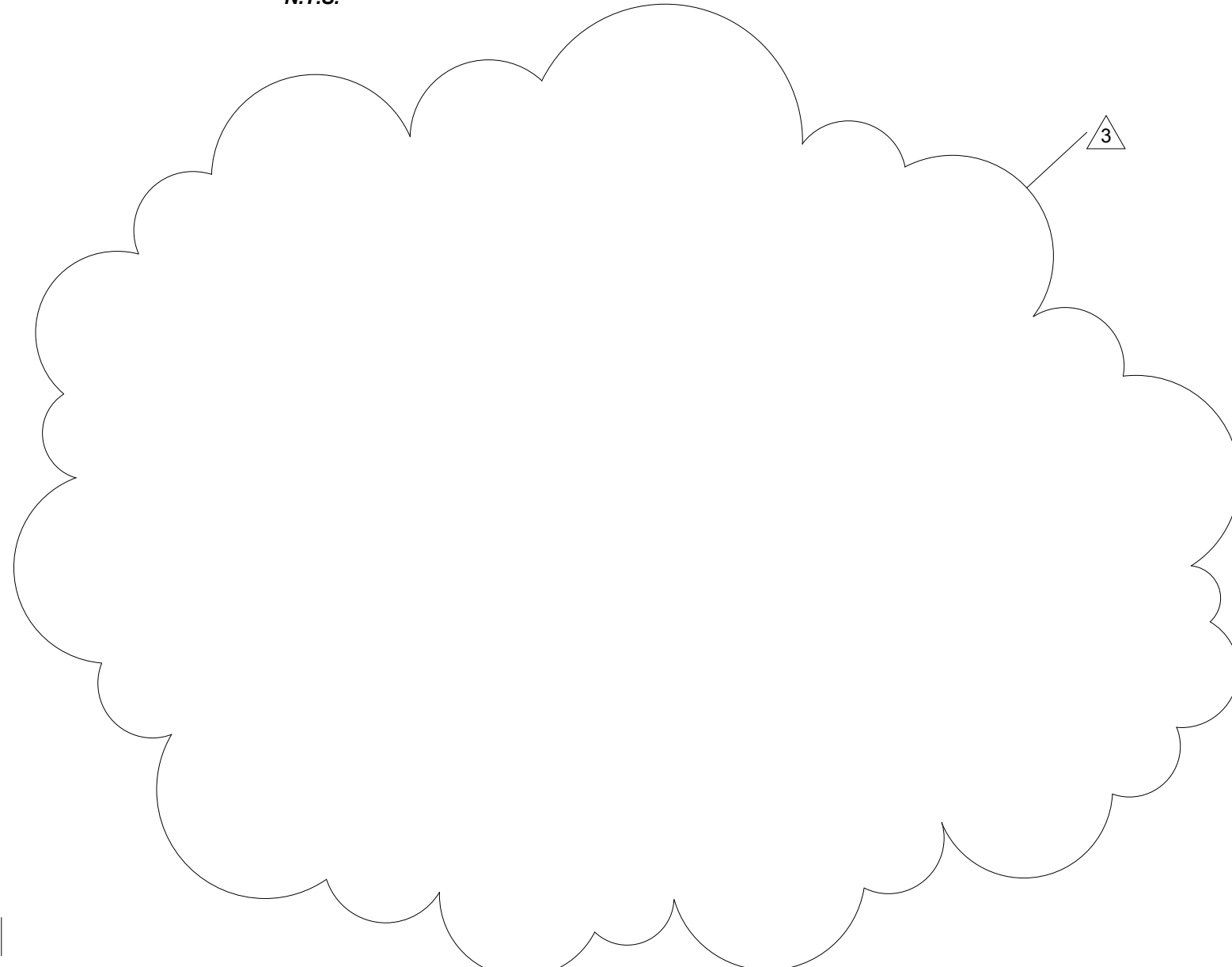
**TYP PLANK BEARING ON "W" BEAM**  
 N.T.S.



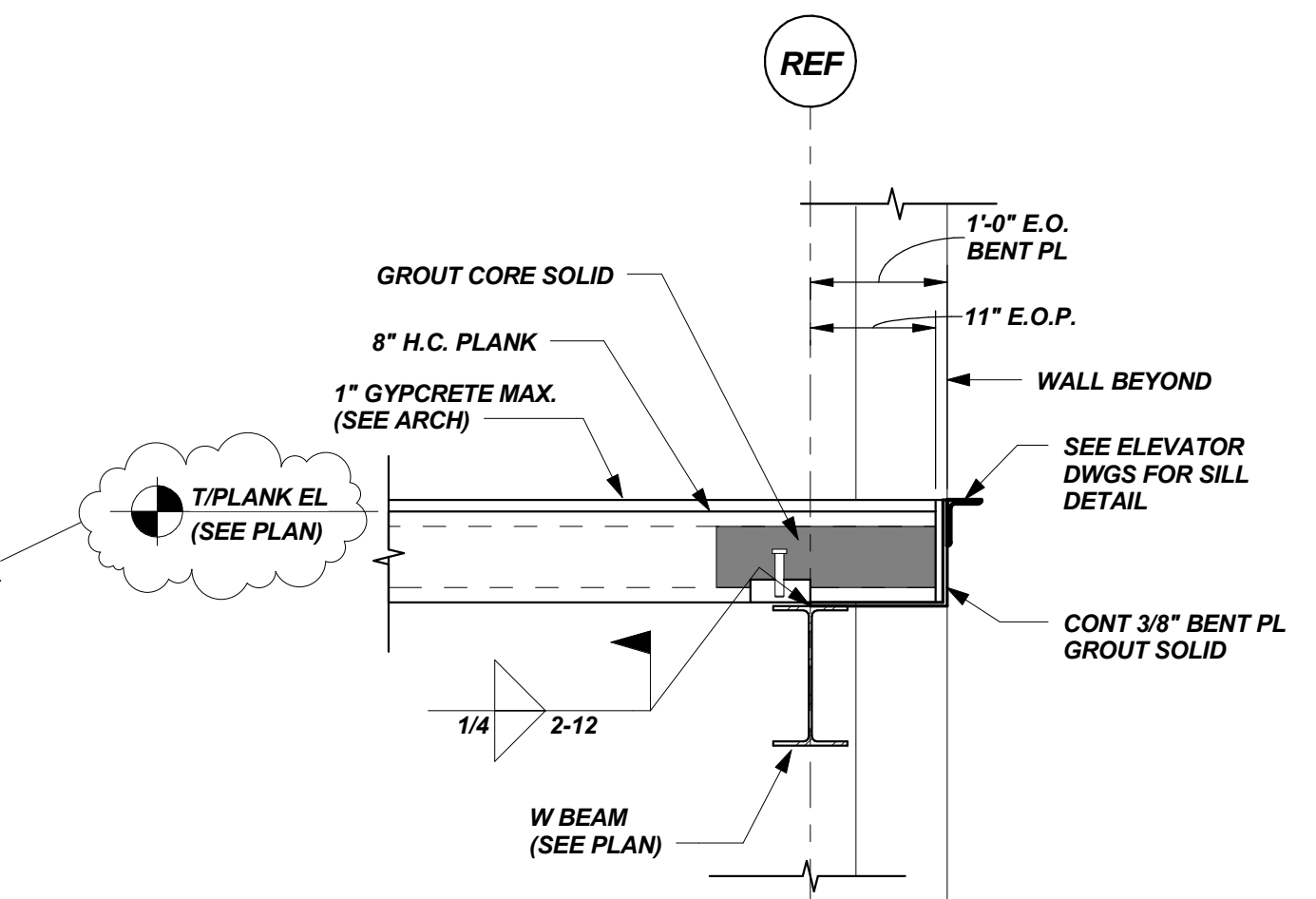
**TYP PLANK TO PLANK CONN**  
 N.T.S.



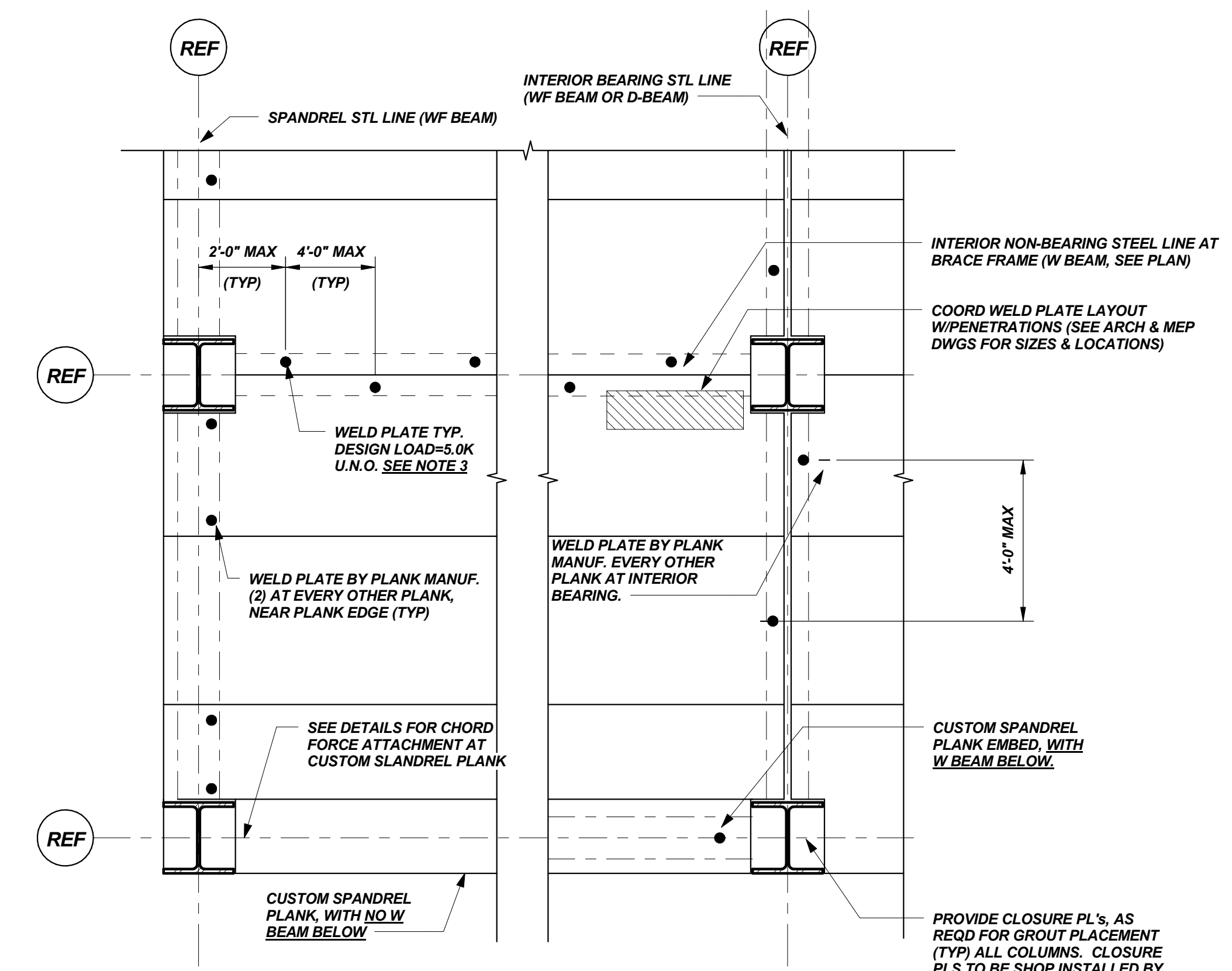
**TYP "D" BEAM TO COL CONN U.N.O.**  
 N.T.S.



**TYP ROOF STANCHION/FALL PROTECTION DETAIL**  
 N.T.S.



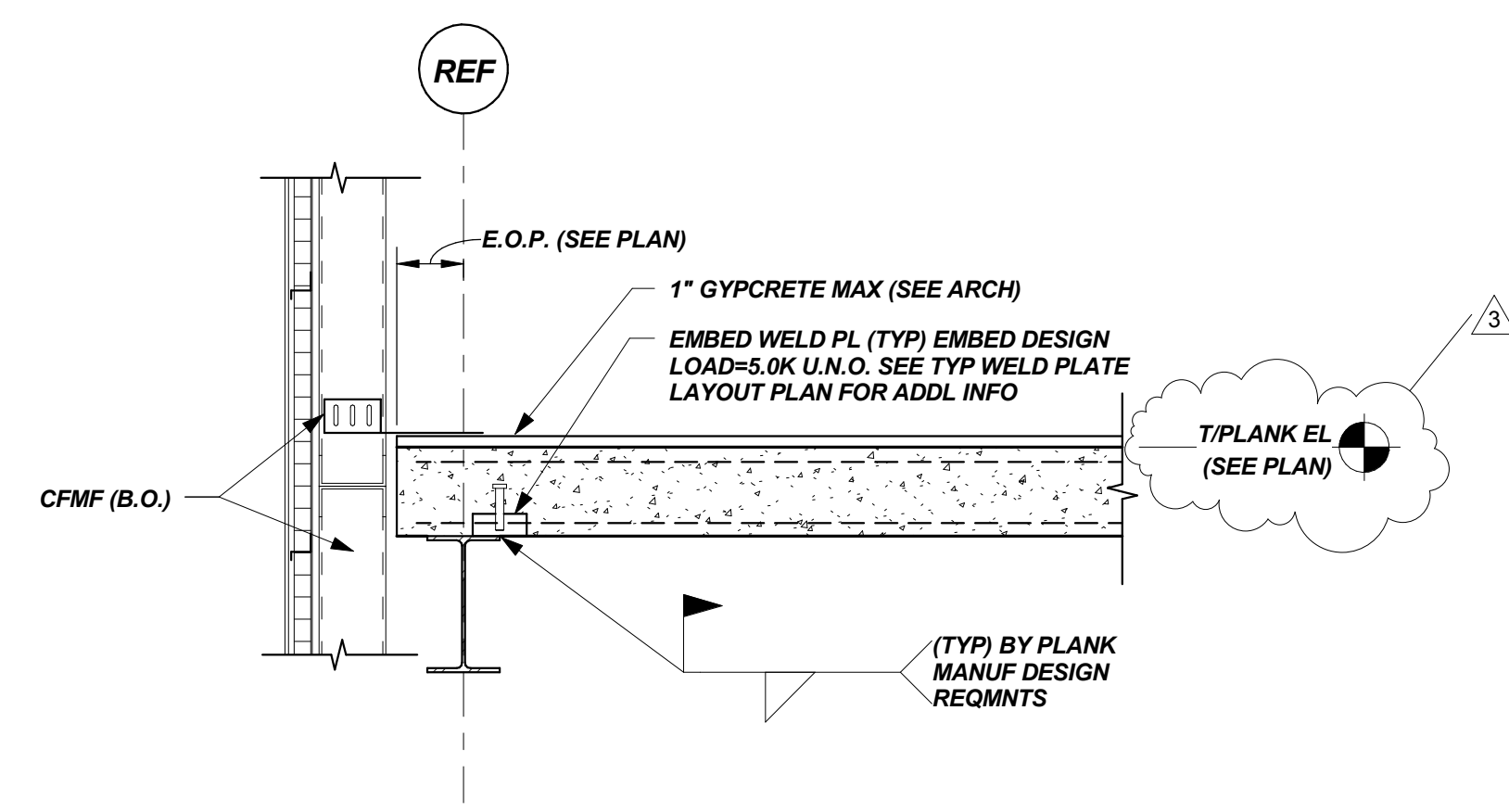
**TYP PLANK EDGE DETAIL AT ELEVATOR SILL**  
 N.T.S.



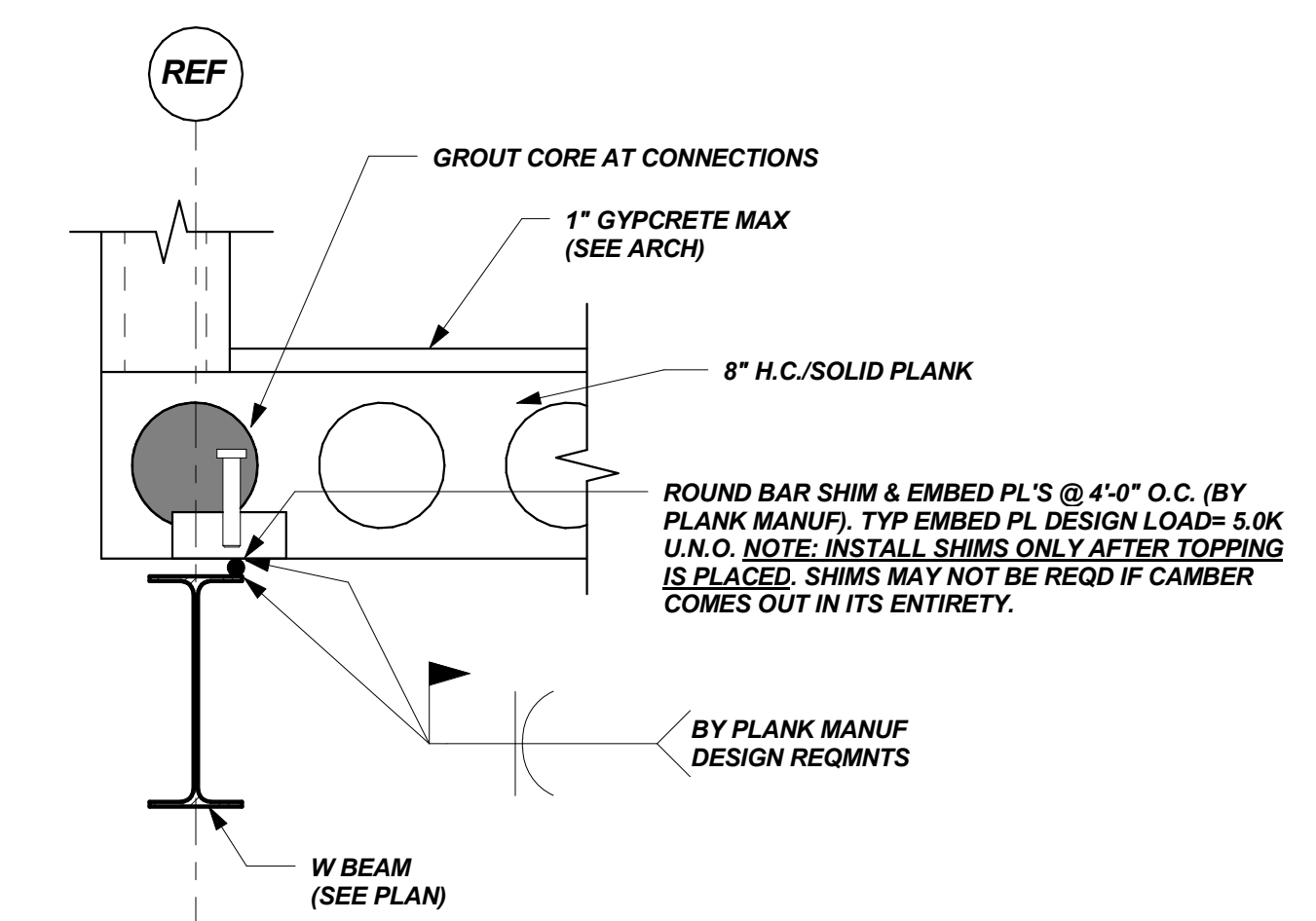
**TYPICAL WELD PLATE LAYOUT PLAN**  
 N.T.S.

- NOTES:  
 1. SPANDREL CONDITIONS APPLY TO BUILDING EXTERIOR, STAIR OPENINGS, FRAMED OPENINGS, ETC.  
 2. LAYOUT ASSUMES 4'-0" MAX PLANK WIDTH.  
 3. SEE PLANS & DETAILS FOR ADDL WELD PLATE DESIGN LOAD INFO.

NOTE: FILL ALL PLANK VOIDS AS REQUIRED FOR INSTALLATION OF GYPCRETE FLOOR LEVELER (TYP)



**TYP PLANK BEARING ON "W" SPANDREL BEAM**  
 N.T.S.



**TYP BEAM/PLANK SHIM WELD DETAIL AT SPANDREL AND BRACED FRAME BEAMS PARALLEL TO PLANK SPAN**  
 N.T.S.

Mark	Date	Description
1/18/13	GENERAL REVISIONS	

Project Status  
**ISSUED FOR CONSTRUCTION**  
 11/16/12

Drawing Title  
**FRAMING SECTIONS AND DETAILS**

Scale: As indicated

Drawing Number

**S5.2**