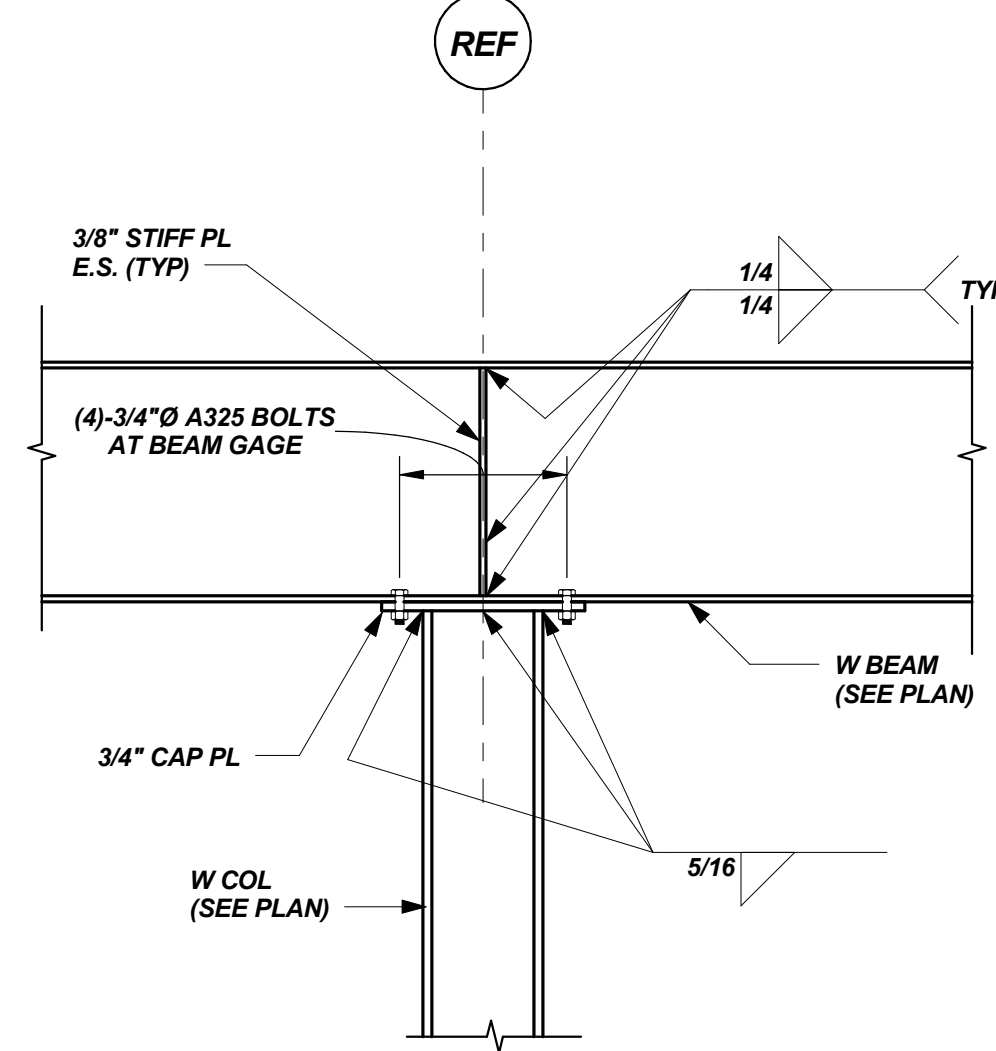
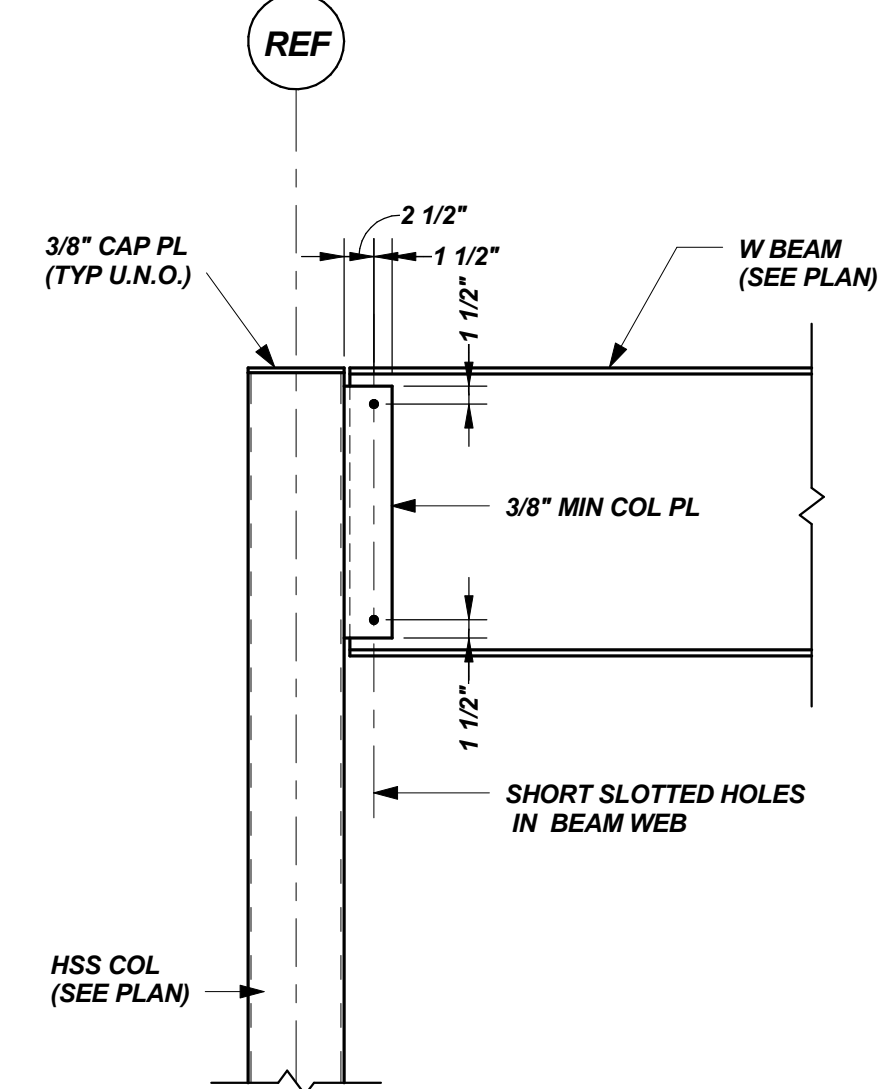


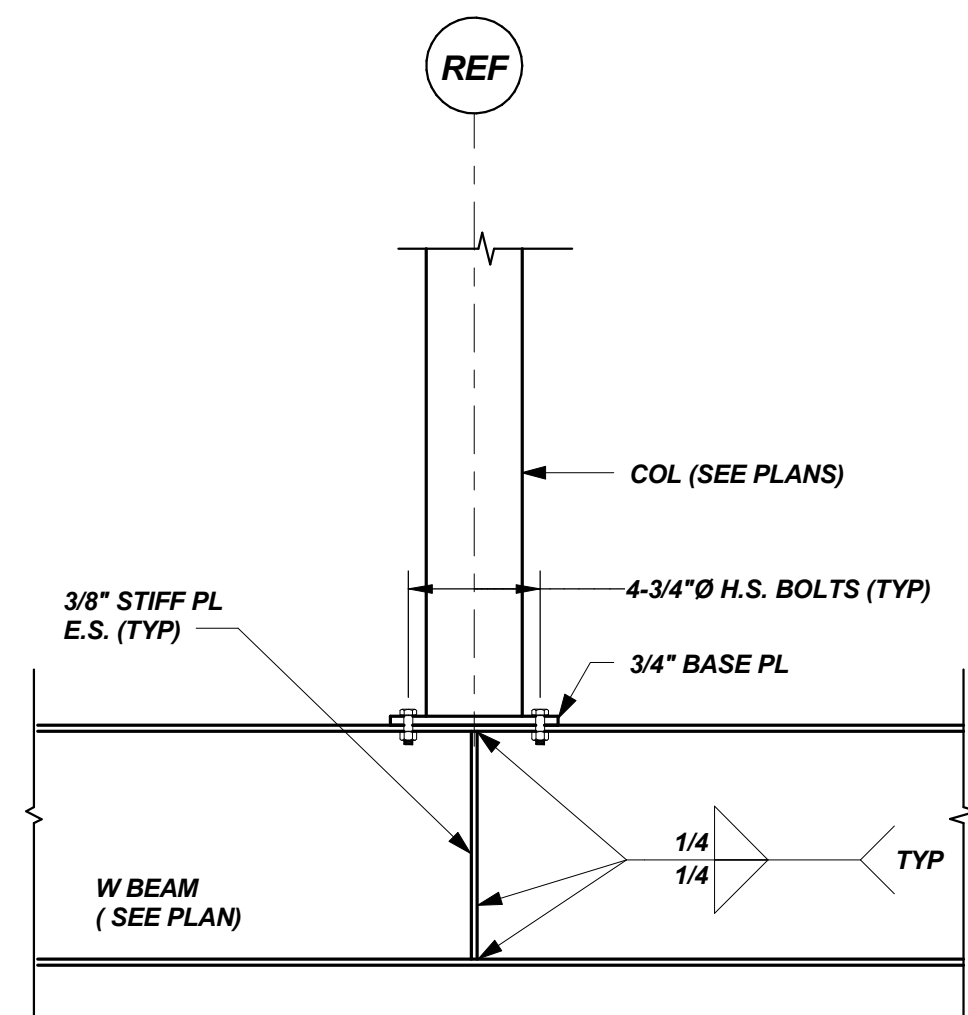
TYP BEAM TO W COL CONN DETAILS
N.T.S.



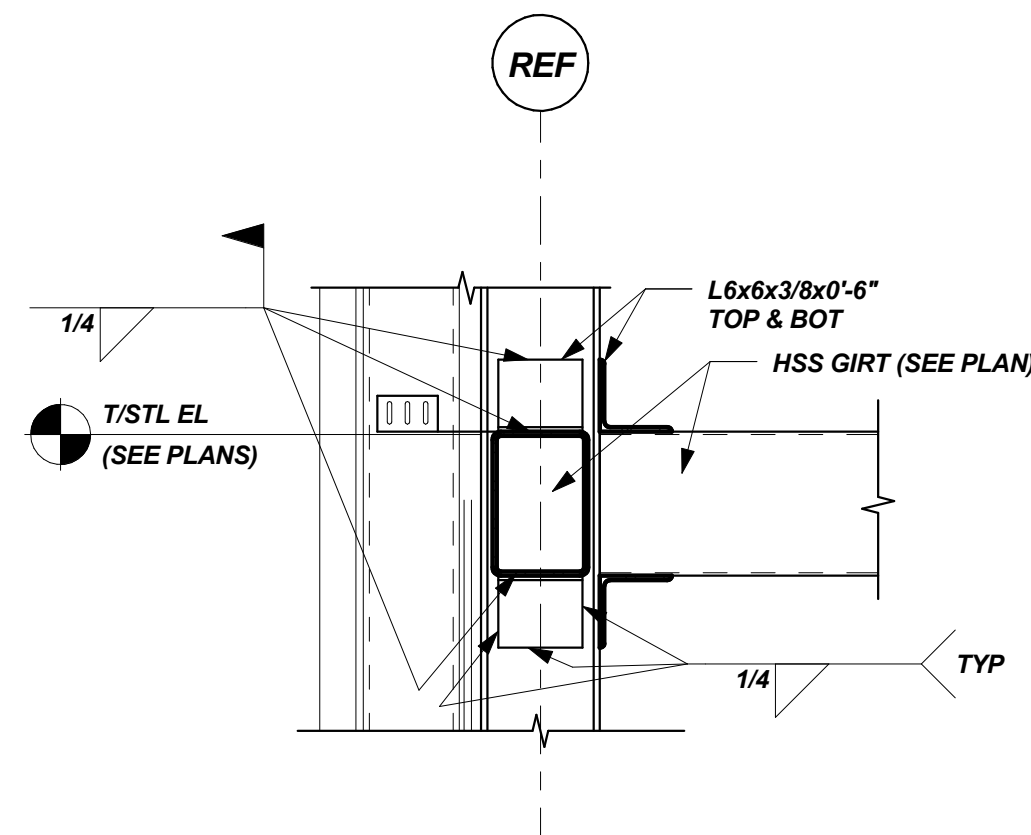
TYP BEAM OVER COL CONN DETAIL
N.T.S.



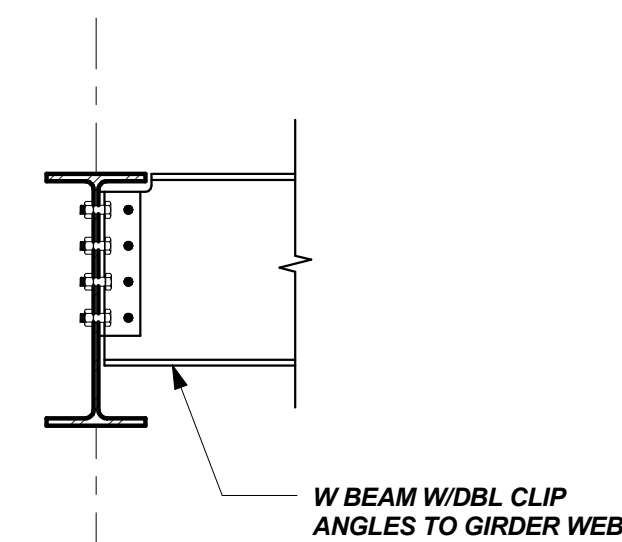
TYP BEAM TO HSS COL CONN U.N.O.
N.T.S.



TYP COL TRANSFER DETAIL
N.T.S.



TYP HSS GIRT CONN
N.T.S.

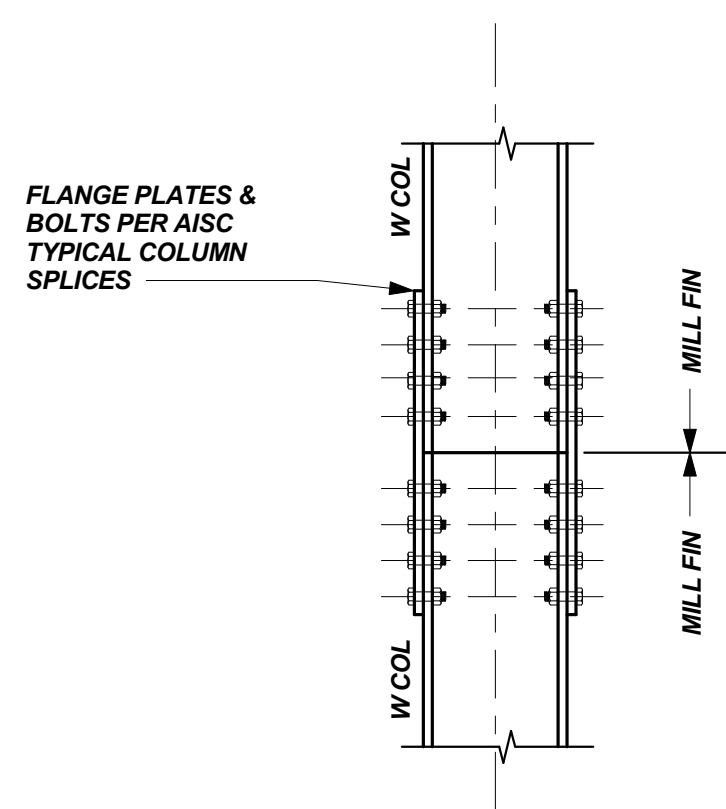


TYP BEAM TO BEAM CONN DETAIL
N.T.S.

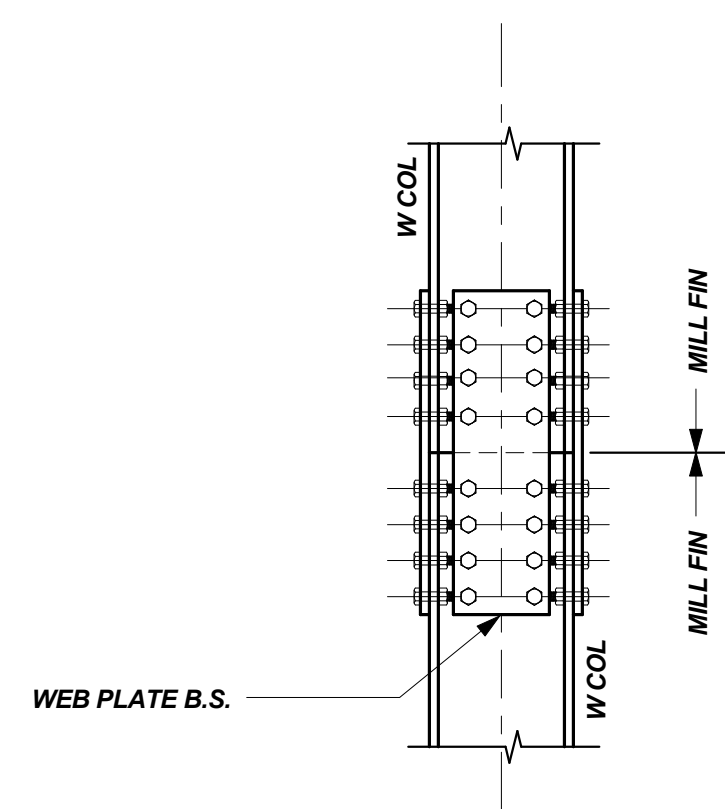
| SIMPLE SHEAR BEAM CONNECTION SCHEDULE | | | |
|---------------------------------------|---|--------------------------------------|--------------------------------------|
| BEAM SIZE | DESIGN REACTION | MIN No. BOLTS - ONE SIDED CONNECTION | MIN No. BOLTS - TWO SIDED CONNECTION |
| DB8 | 35K | 2 | 2 |
| W8/W10 | 25K | 2 | 2 |
| W12/W14 | 40K (TYP) 50K AT W12x50 70K AT W14x48 | 2 | 2 |
| W16 | 40K (TYP) 60K AT W16x45 | 4 | 3 |
| W18 | 70K | 4 | 3 |
| W24 | 110K | 5 | 4 |
| *MODIFIED* W24 AT SEVENTH FLR | 50K@24x76 70K@24x104 | 2 | 2 |
| W30 | 230 | 6 | 5 |

SIMPLE SHEAR CONNECTIONS NOTES:

- SIMPLE SHEAR CONNECTIONS SHALL BE SELECTED FROM THE AISC "MANUAL OF STEEL CONSTRUCTION-ALLOWABLE STRESS DESIGN, LATEST EDITION" USING THE ABOVE REFERENCED REACTIONS AND CRITERIA. REACTIONS INDICATED ARE UNFACTORED (SERVICE LEVEL LOADS). MORE BOLTS THAN REFERENCED IN THE "MINIMUM" SECTIONS ABOVE MAY BE REQUIRED FOR LOAD REQUIREMENTS.
- CONNECTIONS ARE SUBJECT TO REVIEW ON THE STEEL SHOP DRAWINGS.
- ALL BOLTS SHALL BE A325 OR A490 FOR SIMPLE SHEAR CONNECTIONS, MIN 3/4"Ø. MINIMUM WELD SIZE SHALL BE 5/16". AT 3/4"Ø BOLTS, MINIMUM MATERIAL SIZE FOR PLATES OR ANGLES SHALL BE 3/8".
- ONE SIDED CONNECTIONS INCLUDE SINGLE PLATES AND SINGLE ANGLE CONNECTIONS.
- TWO SIDED CONNECTIONS INCLUDE DOUBLE ANGLE AND END PLATE CONNECTIONS.



TYP COL SPLICE



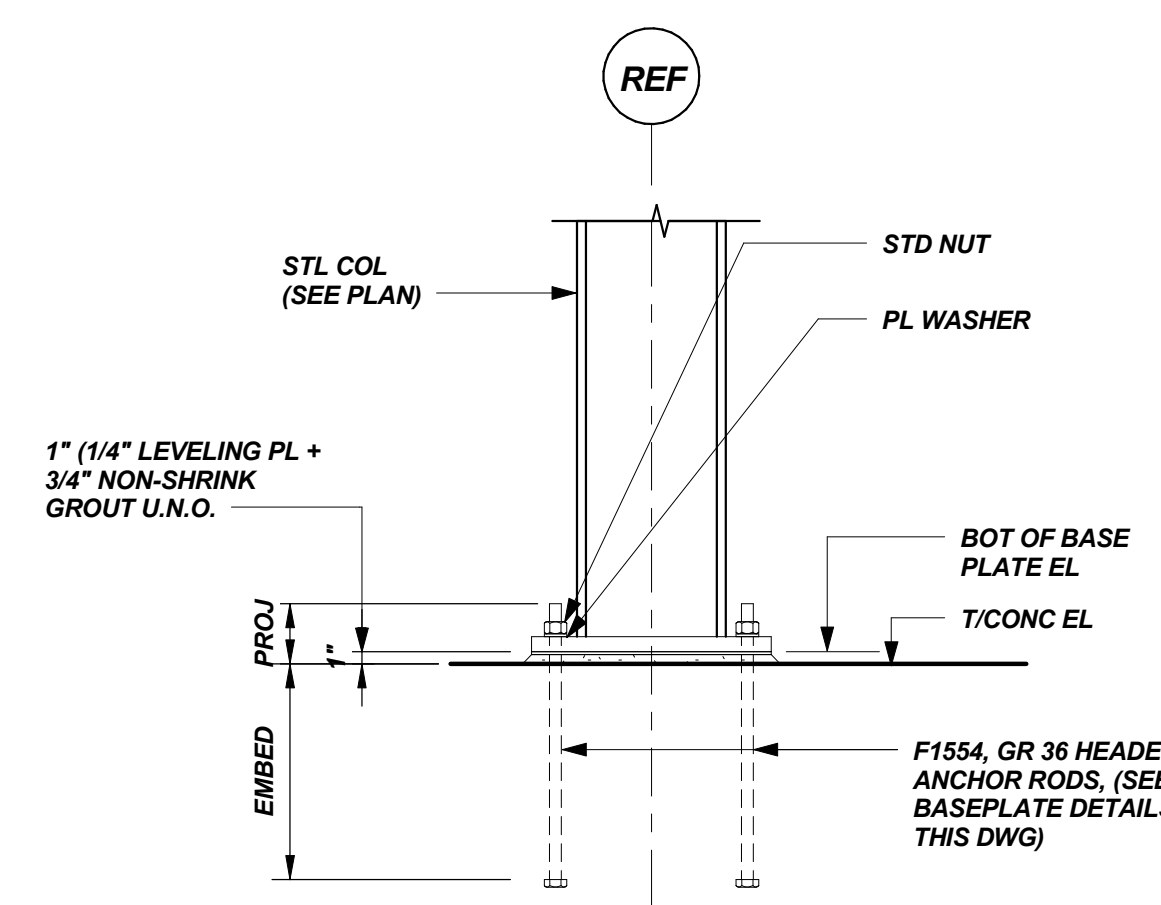
COL SPLICE DETAIL AT BRACED FRAMES

T=200K (MIN DESIGN LOAD)
M=56 K-FT (MIN DESIGN LOAD)

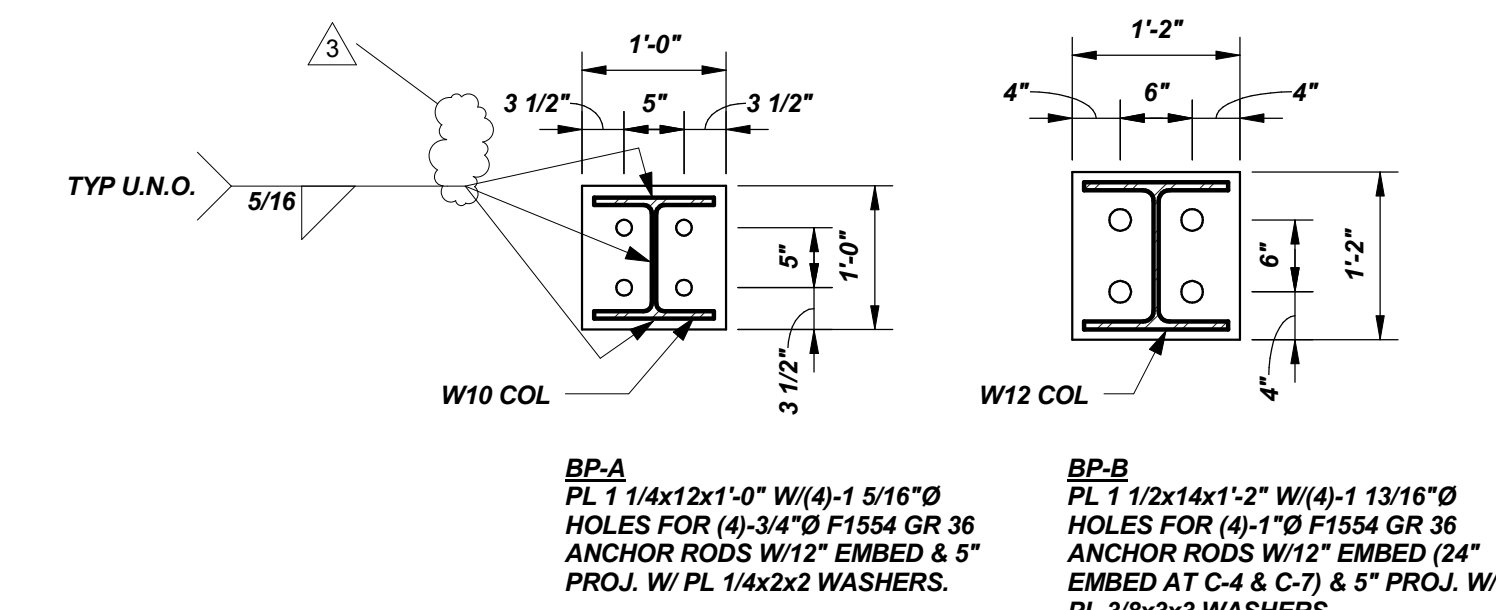
TYP COL SPLICE DETAILS
N.T.S.

NOTES:

- COLUMN SPLICE PLATES/BOLTS ARE TO BE SIZED BY THE CONNECTION DESIGN ENGINEER. SEE SPECIFICATIONS FOR ADDITIONAL INFORMATION.
- WEB CONNECTION IS REQUIRED. DO NOT OMIT IN CONNECTION DESIGN.
- MILL COLUMN ENDS FOR UNIFORM BEARING.
- COLUMNS INDICATED WITH (*) ON COLUMN SCHEDULE SHALL BE DESIGNED FOR UNFACTORED LOADS AS NOTED IN "COL SPLICE DETAIL AT BRACED FRAMES". SEE DWG S4.1 & S4.2 FOR ADDL INFO.



TYP COL BASE DETAIL U.N.O.
N.T.S.



TYP BASE PLATE DETAILS
N.T.S.

NOTE: LOCATIONS ON COL SCHEDULE INDICATED BY ASTERISK (*) SHALL HAVE 2 1/2" THICK BASE PLATE W/ 1"Ø F1554 GR105 A.R. & PL 5/8x3x3 WASHERS. PROVIDE FULL PEN WELD AT COL TO BASE PLATE. SEE TYP ROCK SOCKET & FOUNDATION PIER DETAIL FOR ADDL A.R. EMBED REQUIREMENTS, PROVIDE 5" PROJ.

| Mark | Date | GENERAL REVISIONS | Description |
|------|---------|-------------------|-------------|
| | 1/18/13 | | |

Project Status

ISSUED FOR CONSTRUCTION

11/16/12

Drawing Title

TYP FRAMING
SECTIONS AND
DETAILS

Scale: As indicated

Drawing Number

S5.1