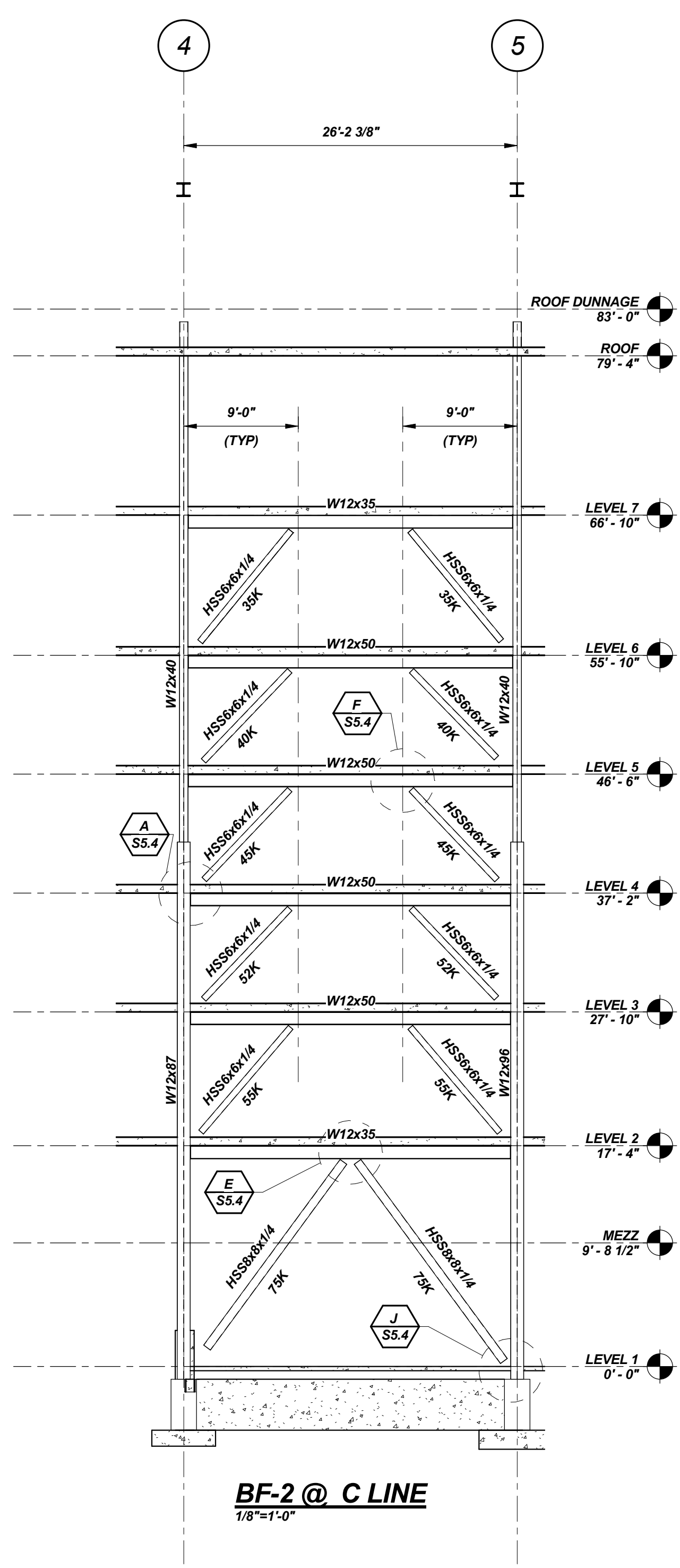
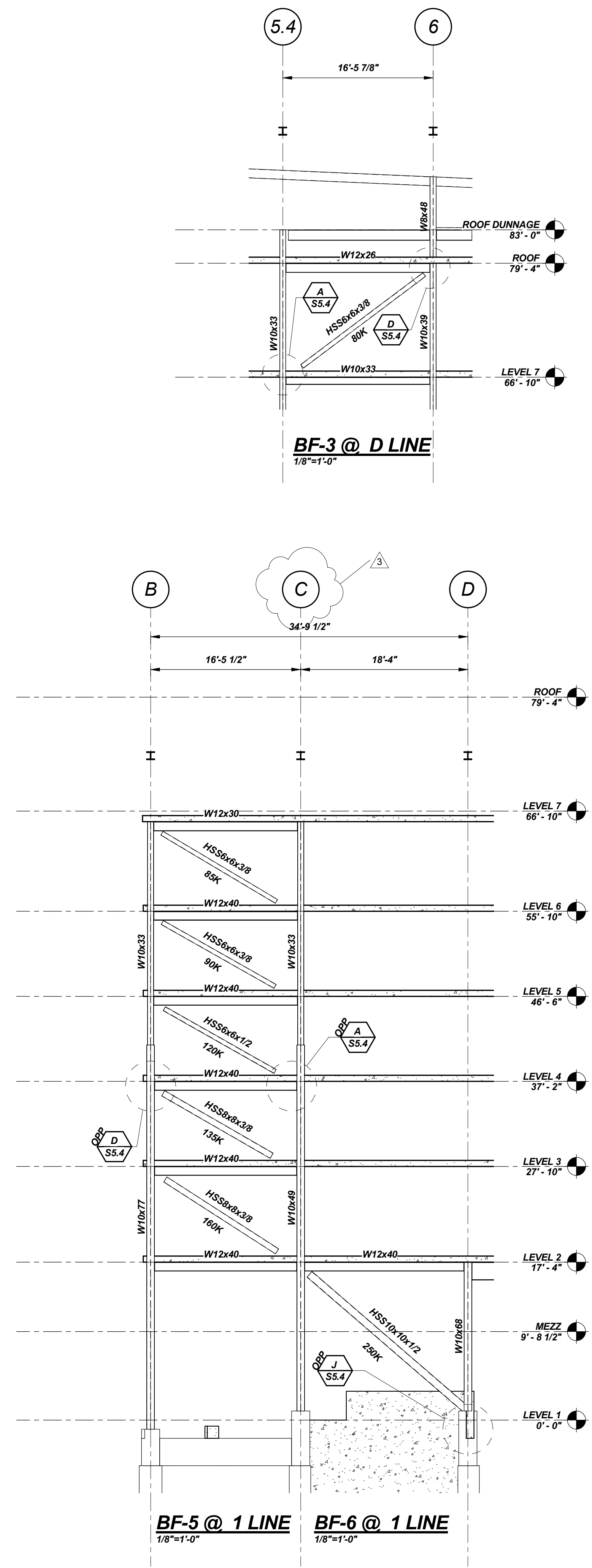


BF-1 @ C.5 LINE
1/8"=1'-0"



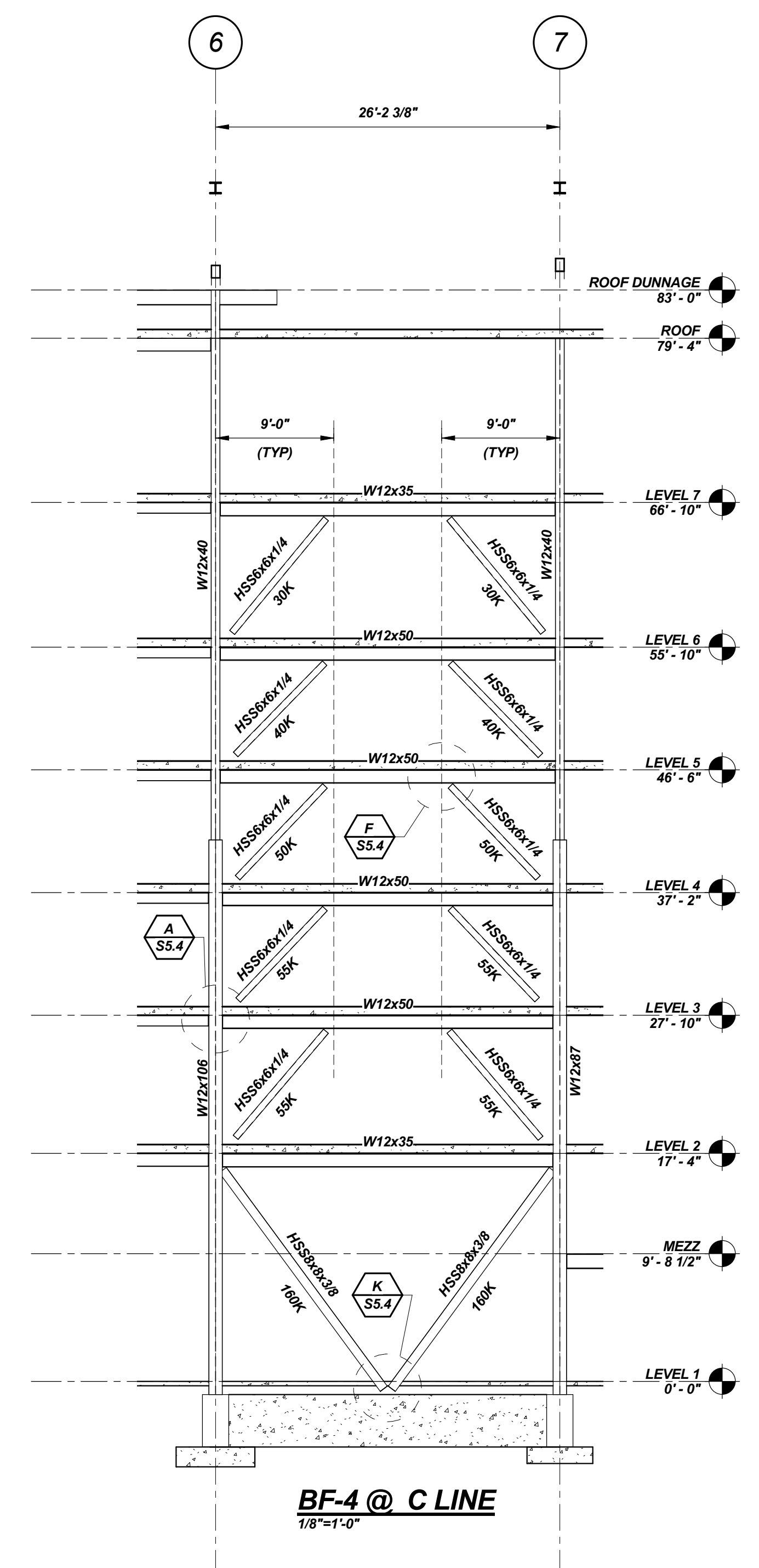
BF-2 @ C LINE
1/8"=1'-0"



BF-3 @ D LINE
1/8"=1'-0"

BF-5 @ 1 LINE
1/8"=1'-0"

BF-6 @ 1 LINE
1/8"=1'-0"



BF-4 @ C LINE
1/8"=1'-0"

BRACE FRAME ELEVATIONS
1/8"=1'-0"

- NOTES:**
- LOADS INDICATED ON BRACED FRAME ELEVATIONS ARE UNFACTORED LOADS AND MAY ACT IN TENSION OR COMPRESSION.
 - LOADS INDICATED HAVE BEEN GENERATED USING R=3. CONNECTIONS DO NOT REQUIRE ADDITIONAL OVERSTRENGTH FACTORS.
 - CONNECTION DESIGN CALCULATION SHALL BE SUBMITTED FOR REVIEW PER SPECIFICATIONS AND SHALL BE STAMPED BY A STRUCTURAL ENGINEER LICENSED IN THE STATE OF MAINE AND SHALL INCLUDE THE FOLLOWING:
 - A. GEOMETRY NECESSARY FOR UNIFORM FORCE METHOD CALCULATIONS.
 - B. ALL APPLICABLE FAILURE MODE CHECKS.
 - CONNECTIONS SHALL BE DESIGNED TO NOT INDUCE MOMENT INTO BEAMS AND COLUMNS, BEYOND THAT FORCED BY MEMBER GEOMETRY.
 - PROVIDE 1/8" MIN STEEL CLOSURE PLATES TO BRACE ENDS AS REQUIRED FOR FIREPROOFING.

Mark	Date	GENERAL REVISIONS Description
	1/18/13	

Project Status

ISSUED FOR
CONSTRUCTION
11/16/12

Drawing Title

BRACED FRAME
ELEVATIONS

Scale: As indicated

Drawing Number

S2.1