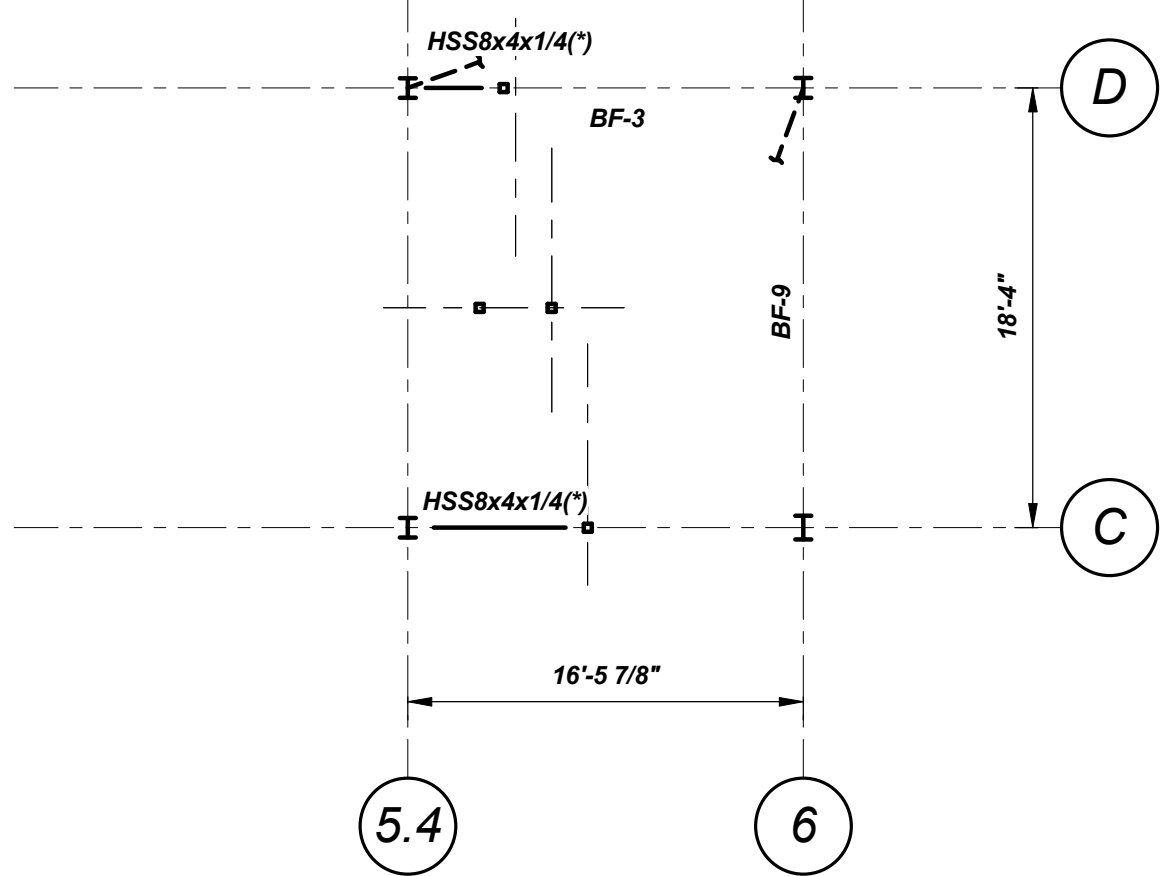


**FLOOR 7 FRAMING PLAN**  
1/8"=1'-0"

- NOTES:**
- "DB\_x" INDICATES DISSYMMETRIC BEAM (DB) GRADE 50 STEEL. SEE DWG S5.2 FOR TYPICAL DB BEAM/GIRDER SLAB DETAILS.
  - TOP OF "D" BEAM BETWEEN CARS. BEAM SIZE AND CONNECTIONS ON HOLD PENDING ELEVATOR DESIGN AND RAIL REQUIREMENTS. \* INDICATES SIZE AND LOCATION TO BE CONFIRMED WITH FINAL ELEVATOR SHOP DWGS.
  - TOP OF WIDE FLANGE STEEL REF EL 66'-10" U.N.O. (L) INDICATES TOP OF STEEL REF EL 65'-8".
  - INDICATES SPAN DIRECTION OF 8" PRECAST PRESTRESSED HOLLOW CORE PLANK. SEE ARCH DWGS FOR FIN FLOOR REQMENTS.
  - TOP OF PLANK REF EL 67'-6" U.N.O. (L) INDICATES TOP OF PLANK REF EL 66'-4".
  - PRECAST PLANK LAYOUT IS TO BE DETERMINED BY THE PRECAST PLANK SUPPLIER.
  - TEMPORARY BEAMS MAY BE REQUIRED FOR ERECTION. ERECTOR SHALL DETERMINE ALL TEMPORARY BRACING AND BRACING SEQUENCE. SEE SPECIFICATIONS FOR ADDL REQMENTS.
  - BF-xx INDICATES VERTICAL BRACING. SEE BRACING ELEVATIONS DWG S2.1, S2.2.
  - ALL STAIR STRUCTURES SHALL BE DESIGNED BY THE STRUCTURAL STEEL FABRICATOR IN ACCORDANCE WITH THE 2009 INTERNATIONAL BUILDING CODE (IBC). STAIRS AND LANDINGS SHALL BE DESIGNED FOR A 100 PSF LIVE LOAD. COORDINATE ALL DETAILS WITH ARCHITECTURAL DRAWINGS AND SUBMIT DRAWING FOR REVIEW. DESIGN SHALL BE STAMPED BY A PROFESSIONAL ENGINEER REGISTERED IN THE STATE OF MAINE.
  - INDICATES LOCATION OF CAST OPENING IN PLANK. PLANK DESIGNER SHALL COORD SIZE, LOCATIONS & QUANTITIES W/MEP DRAWINGS. PLANK MANUF/DESIGNER SHALL DESIGN & SUPPLY ANY HEADERS/FRAMES REQD FOR OPENINGS.
  - INDICATES LOCATION WHERE GROUP OF FIELD CORES ARE ANTICIPATED. PLANK DESIGNER SHALL COORD CORE SIZE, LOCATION & QUANTITIES W/MEP DRAWINGS. PLANK DESIGNER SHALL ACCOMMODATE THESE CORES IN DESIGN & PRESCRIBE ACCEPTABLE LOCATIONS IN LAYOUT DWGS. PLANK DESIGNER IS RESPONSIBLE TO CONFIRM AS-CORED LOCATIONS IN FIELD ARE CONSISTENT W/DESIGNER INTENT.
  - INDICATES LOCATION OF INDIVIDUAL FIELD CORE. PLANK DESIGNER SHALL COORD CORE SIZE, LOCATION & QUANTITIES W/MEP DRAWINGS. PLANK DESIGNER SHALL ACCOMMODATE THESE CORES IN DESIGN & PRESCRIBE ACCEPTABLE LOCATIONS IN LAYOUT DWGS. PLANK DESIGNER IS RESPONSIBLE TO CONFIRM AS-CORED LOCATIONS IN FIELD ARE CONSISTENT W/DESIGNER INTENT.
  - HSS8x4x1/4 BEAM BETWEEN CARS. BEAM SIZE AND CONNECTIONS ON HOLD PENDING ELEVATOR DESIGN AND RAIL REQUIREMENTS. \* INDICATES SIZE AND LOCATION TO BE CONFIRMED WITH FINAL ELEVATOR SHOP DWGS.
  - S.C. INDICATES SLIP CRITICAL CONNECTION LOCATION. FABRICATOR'S CONNECTION DESIGNER TAKE NOTE.
  - 49K INDICATES FORCE (UNFACTORED) TO BE TRANSFERRED FROM PLANK TO BEAM/BEAMS ENCIRCLED. PLANK DESIGNER TO DETERMINE IMPACT ON TYPICAL EMBED PLATE CAPACITY/QUANTITY AND ADJUST ACCORDINGLY.
  - WSL=XX PSF INDICATES ADDITIONAL SUPERIMPOSED SNOW LOAD ON TOP OF BALANCED SNOW LOAD. SEE GENERAL NOTES FOR BALANCED SNOW LOAD.



**ELEVATOR FRAMING PART PLAN**  
1/8"=1'-0"

- NOTES:**
- TOP OF STEEL REF EL 76'-7" (\*)

Mark	Date	Description
1/18/13		GENERAL REVISIONS
11/30/12		ADDENDUM 1

Project Status

**ISSUED FOR CONSTRUCTION**  
11/16/12

Drawing Title

**FLOOR 7 FRAMING PLAN**

Scale: As indicated

Drawing Number

**S1.5**