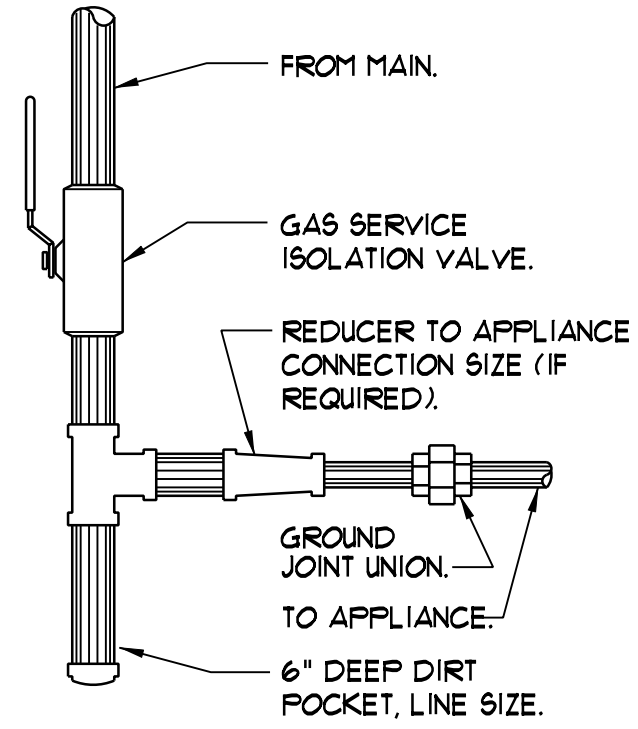


UPFEED GAS PIPING CONNECTION DETAIL

NTS

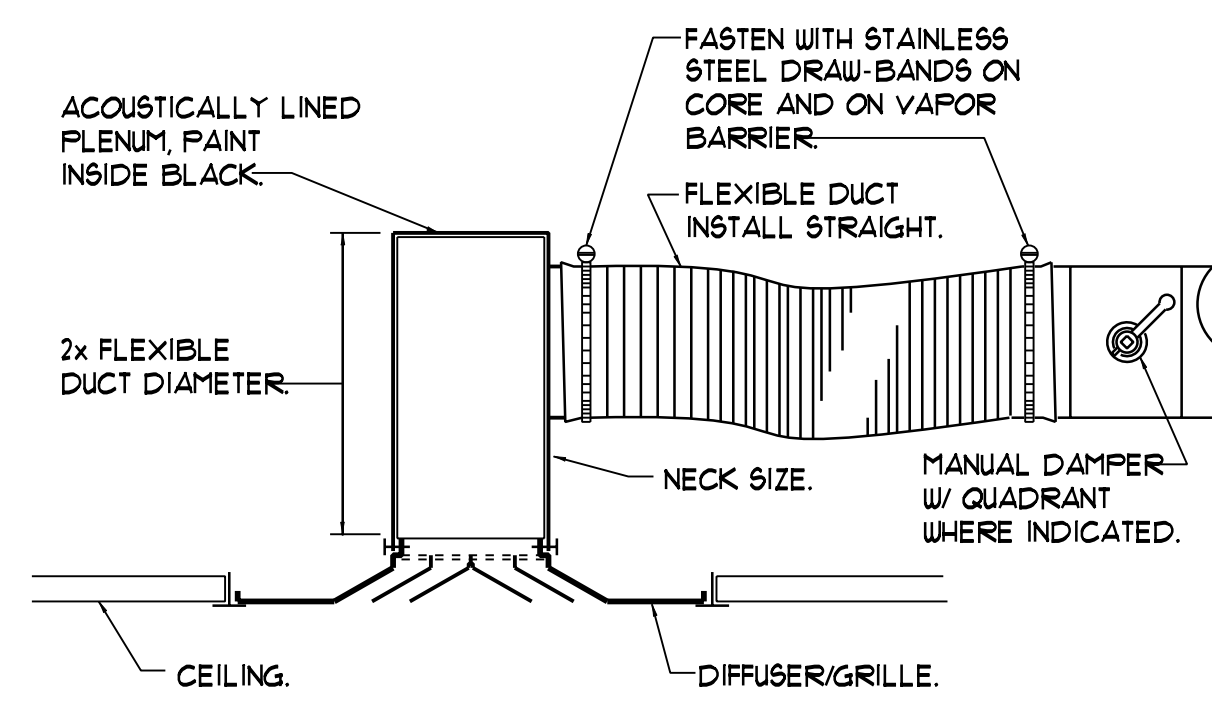
NOTE APPLIANCES WITH REGULATORS LOCATE PIPING SHOWN HEREIN UPSTREAM OF THE APPLIANCE REGULATOR. PROVIDE A TEST PLUG DOWNSTREAM OF THE APPLIANCE REGULATOR.



DOWNFEED GAS PIPING CONNECTION DETAIL

NTS

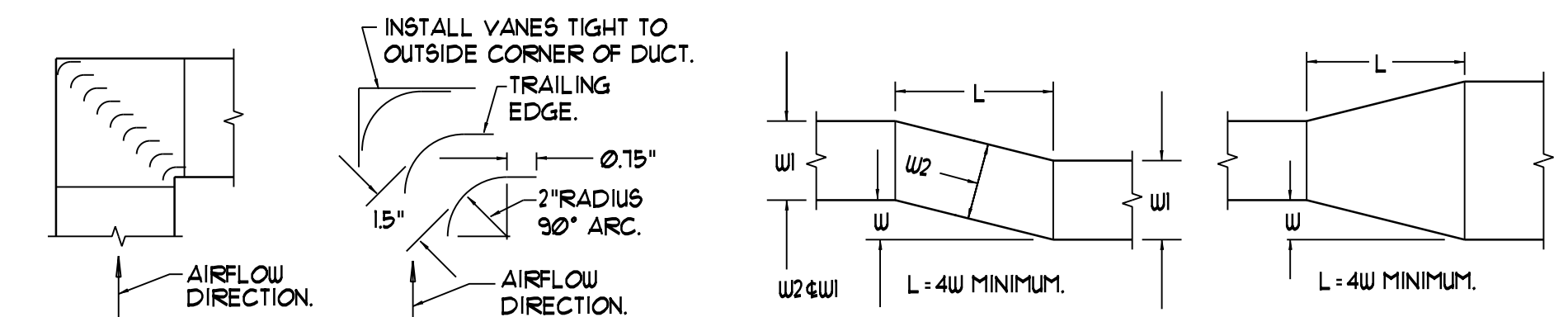
NOTE APPLIANCES WITH REGULATORS LOCATE PIPING SHOWN HEREIN UPSTREAM OF THE APPLIANCE REGULATOR. PROVIDE A TEST PLUG DOWNSTREAM OF THE APPLIANCE REGULATOR.



DIFFUSER/RETURN CONNECTION DETAIL

NTS

NOTE DETAIL TYPICAL FOR CEILING GRILLES, REGISTERS AND LINEAR DIFFUSERS. FOR SURFACE-MOUNT DEVICES, SUPPORT PLENUM FROM CEILING GRID WITH STEEL ANGLES FASTENED TO PLENUM.



RECT. ELBOW W/TURNING VANES

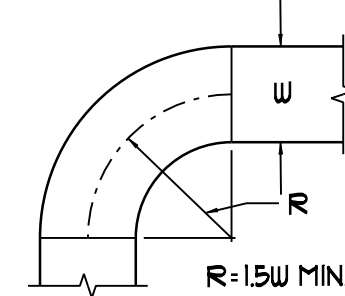
NTS NOTE INSTALL VANE EDGES TO PROJECT TANGENTS PARALLEL TO DUCT SIDES.

OFFSET TYPE 1 (ANGLED)

NTS

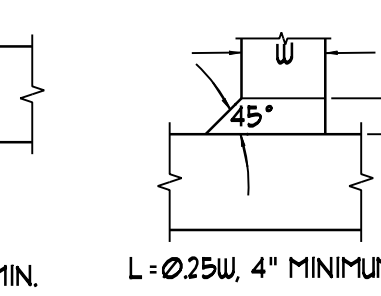
CONCENTRIC TRANSITION

NTS



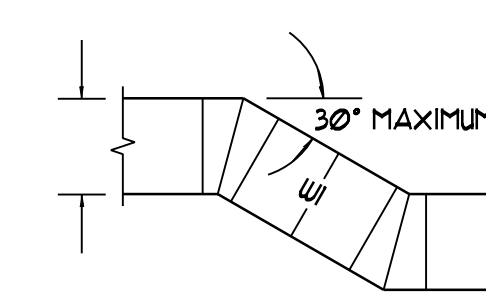
RADIUS ELBOW

NTS



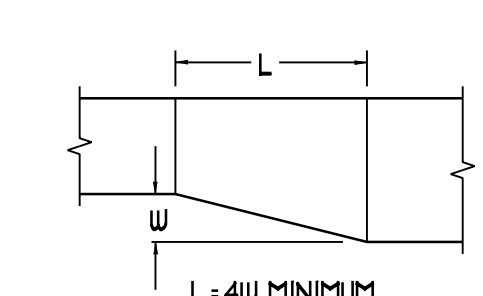
RECTANGULAR TAP 45 DEGREE ENTRY

NTS



OFFSET TYPE 2 (MITERED)

NTS

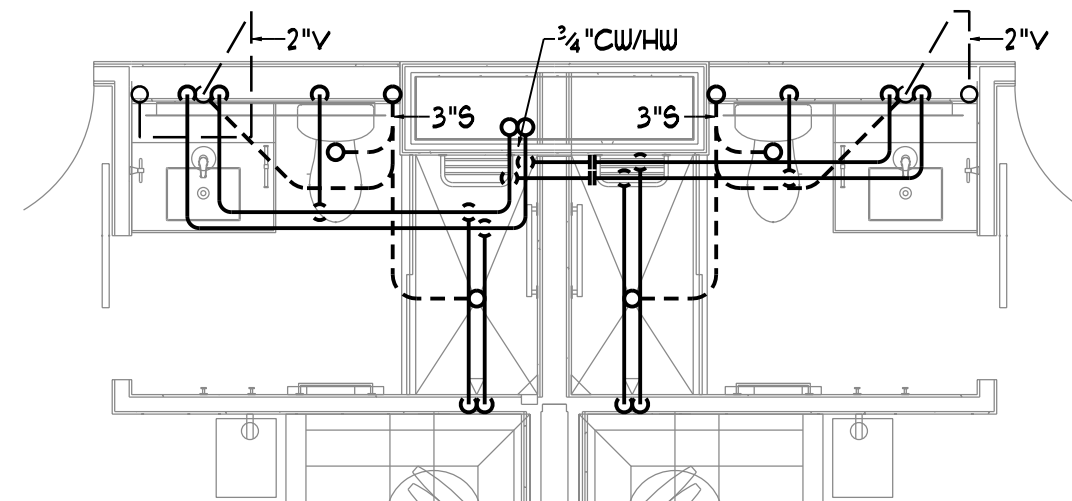


ECCENTRIC TRANSITION

NTS

LOW PRESSURE DUCT CONSTRUCTION DETAILS - TYPICAL

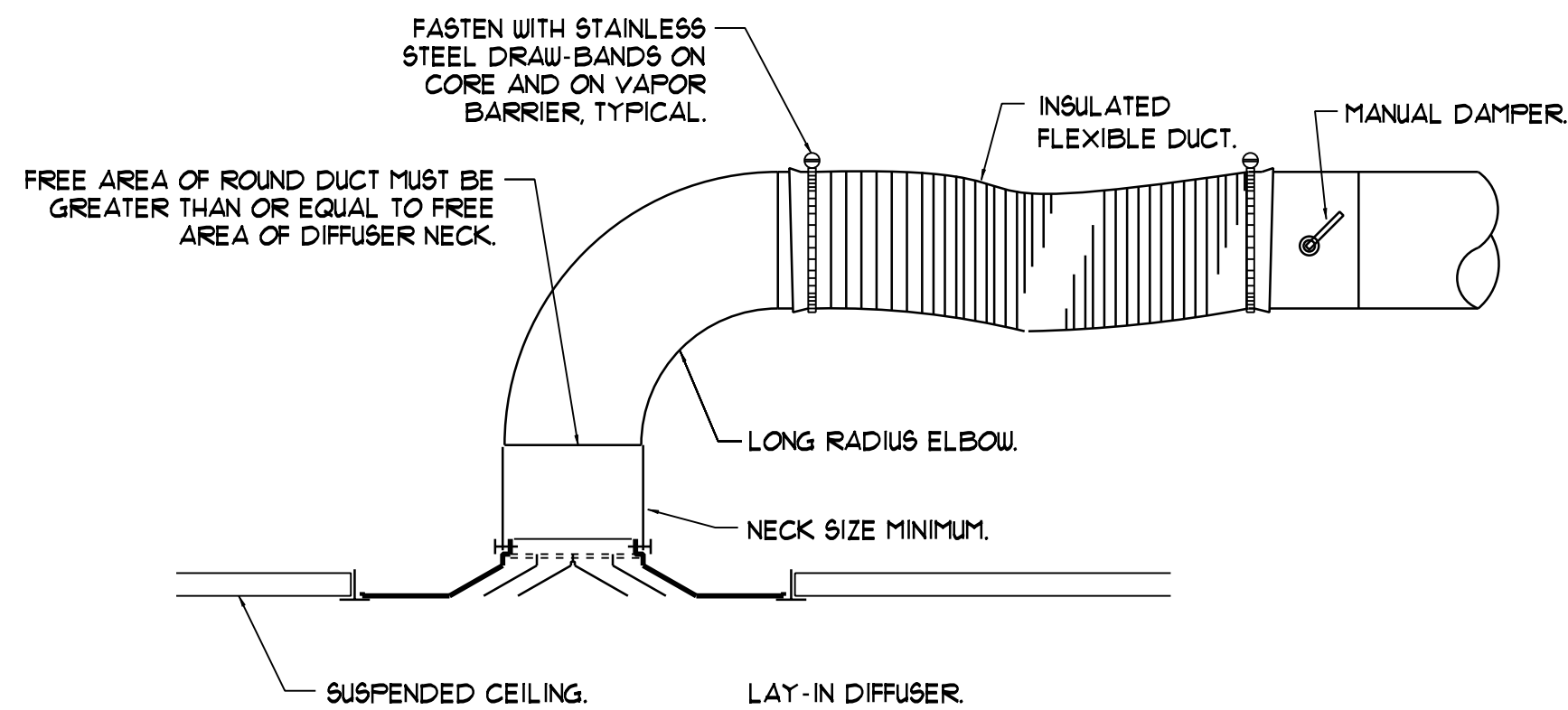
NTS



TYPICAL BATHROOM PIPING

NTS

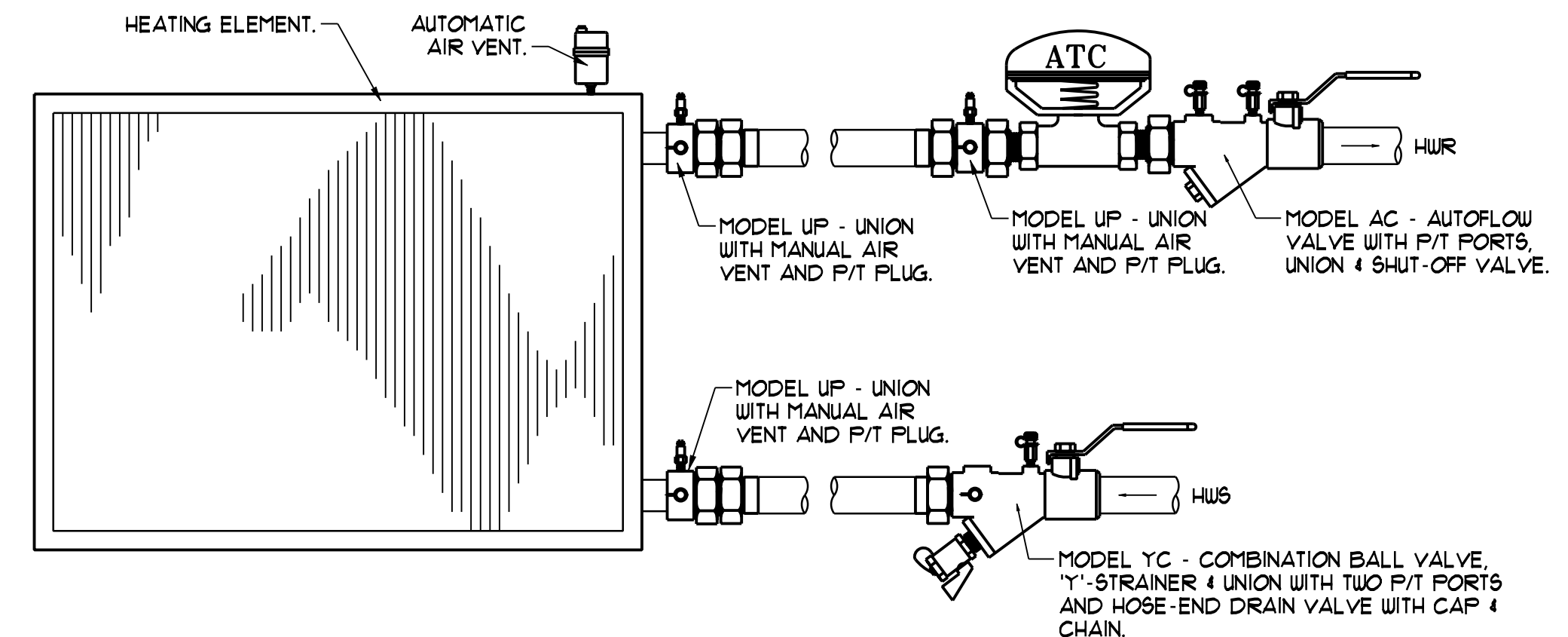
NOTE - REFER TO MAINE PLUMBING CODE 908.2 HORIZONTAL WET VENTING FOR BATHROOM GROUPS.



DIFFUSER/RETURN CONNECTION DETAIL

NTS

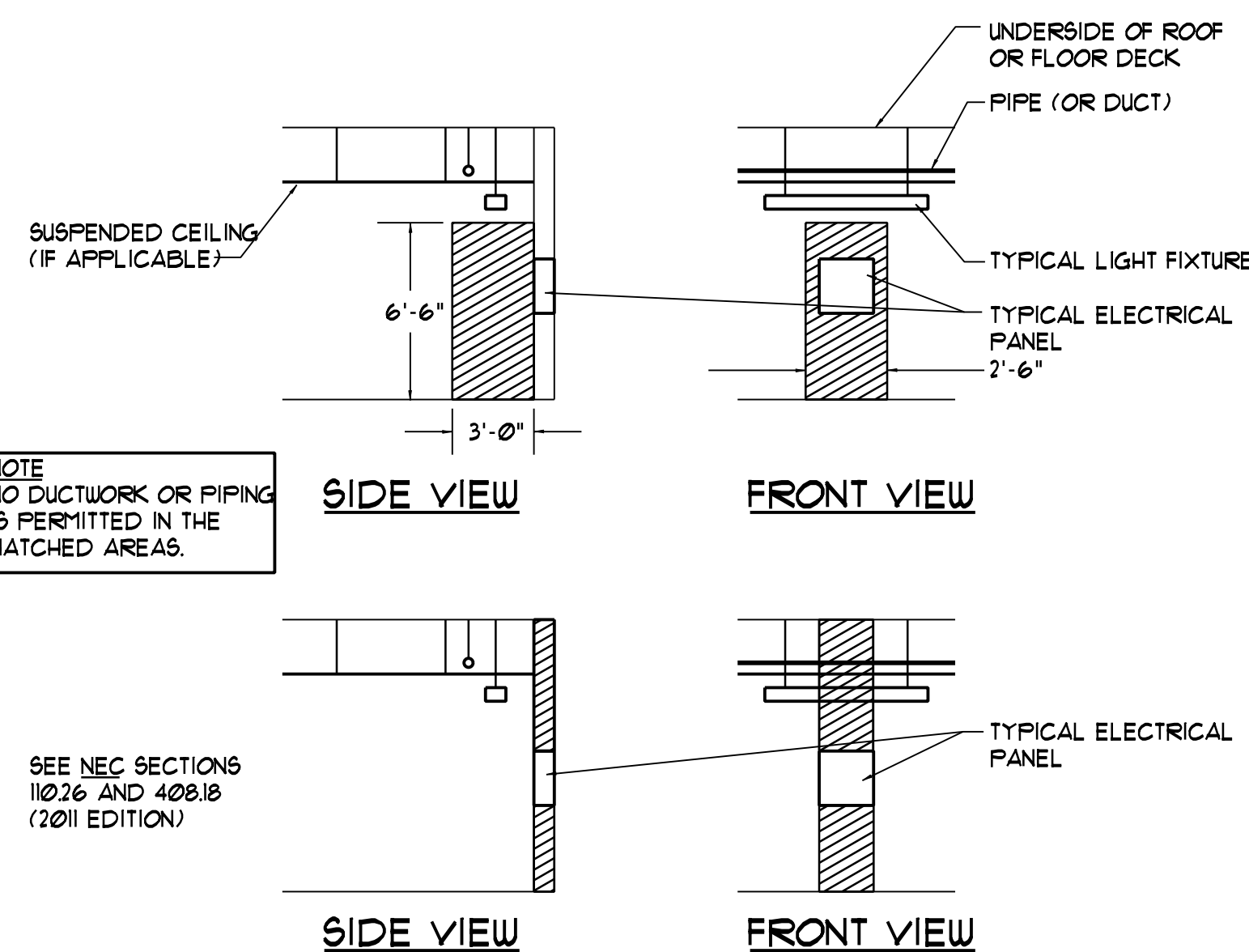
NOTE DETAIL TYPICAL FOR CEILING GRILLES, REGISTERS AND LINEAR DIFFUSERS. FOR SURFACE-MOUNT DEVICES, SUPPORT PLENUM FROM CEILING GRID WITH STEEL ANGLES FASTENED TO PLENUM. FOR RETURN GRILLES, PROVIDE FLEXIBLE DUCT TO THE PLENUM WHERE INDICATED, 2 FEET LONG MINIMUM, 4 FEET MAXIMUM.



AUTOFLOW VALVE PIPING SCHEMATIC W/ 2-WAY VALVE

NTS

NOTE - MODEL NUMBERS BASED ON FLOW DESIGN INC. FOR PIPE SIZES 2" AND SMALLER. NOTE - DETAIL APPLIES TO HEAT PUMPS.

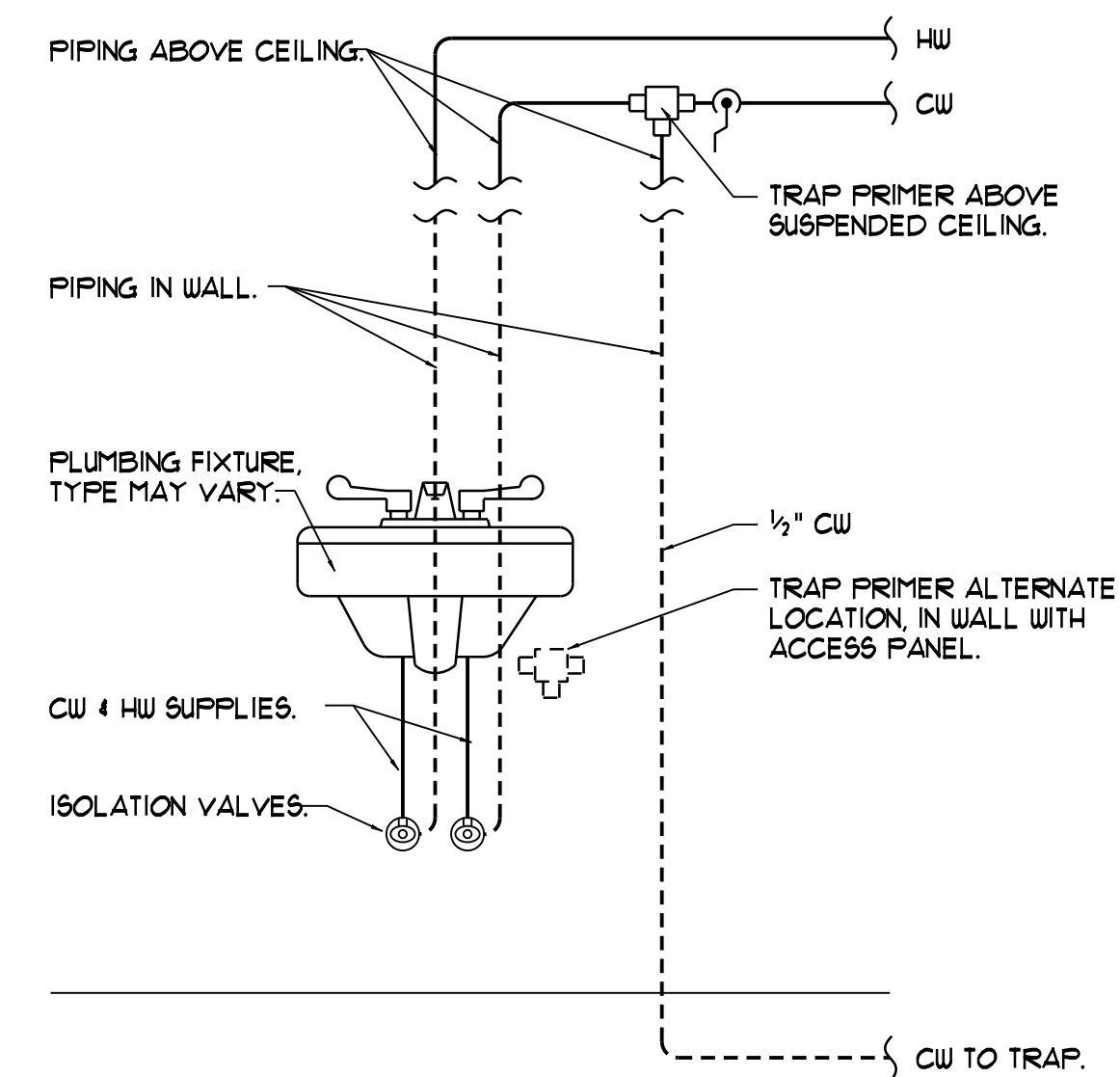


CLEARANCES AT ELECTRICAL PANELS

NTS

NOTE NO DUCTWORK OR PIPING IS PERMITTED IN THE HATCHED AREAS.

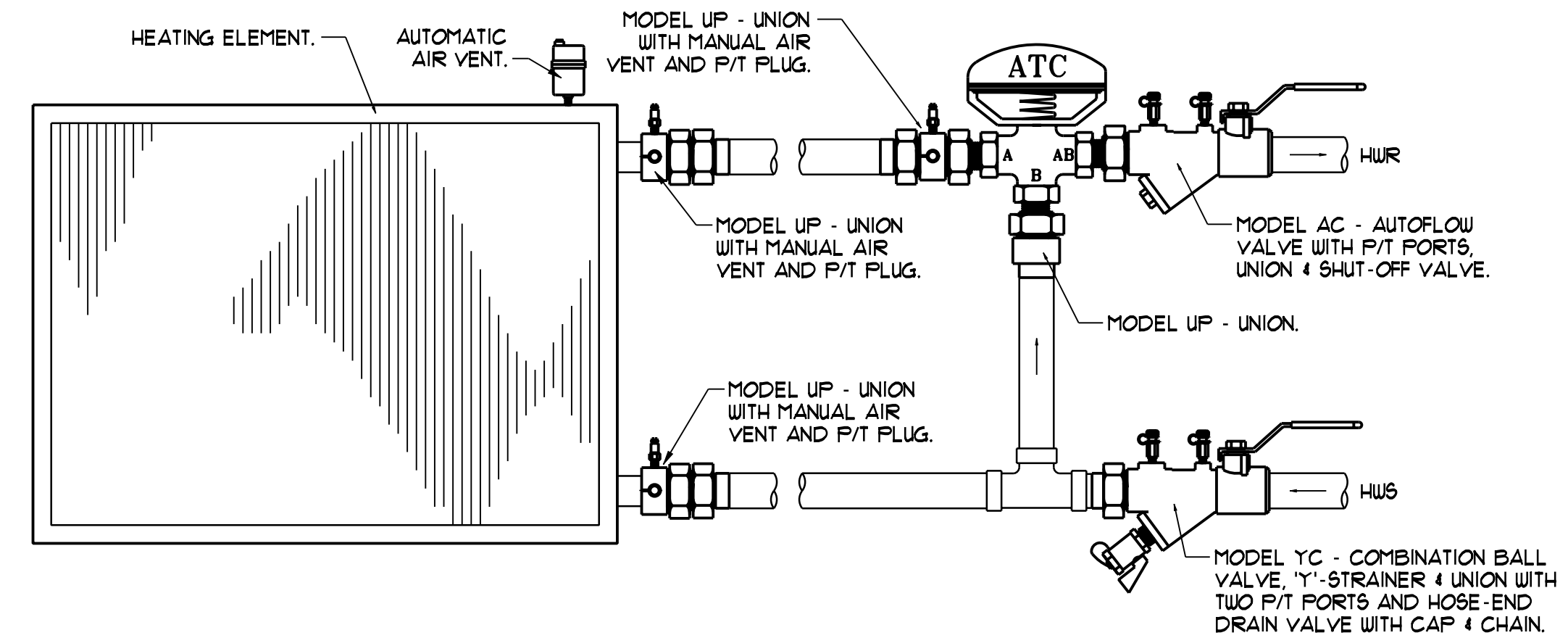
SEE NEC SECTIONS 110.26 AND 408.18 (2011 EDITION)



TRAP PRIMER CONNECTION DETAIL

NTS

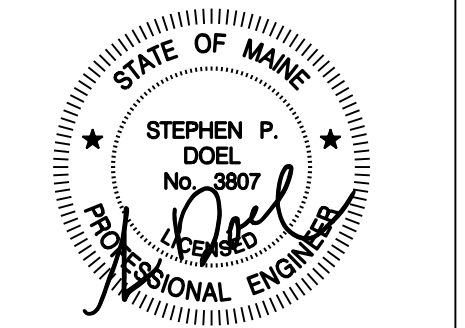
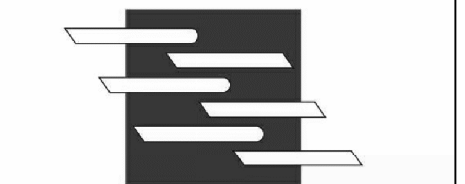
NOTE - ALL FLOOR DRAINS SHALL HAVE TRAP PRIMERS, CONNECT TO NEAREST FIXTURE.



AUTOFLOW VALVE PIPING SCHEMATIC W/ 3-WAY VALVE

NTS

NOTE - MODEL NUMBERS BASED ON FLOW DESIGN INC. FOR PIPE SIZES 2" AND SMALLER. NOTE - DETAIL APPLIES TO HEAT PUMPS.



Mark	Date	Description

Project Status

**ISSUED FOR
CONSTRUCTION**

03-01-2013

Drawing Title

Mechanical Details

Scale:

Drawing Number

M30.4