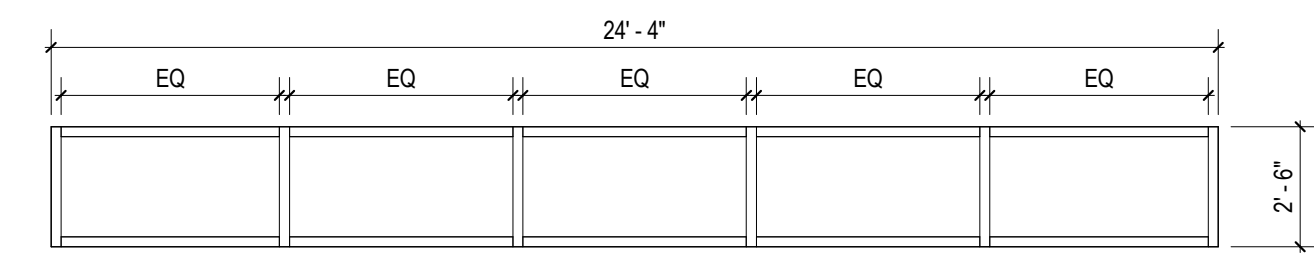
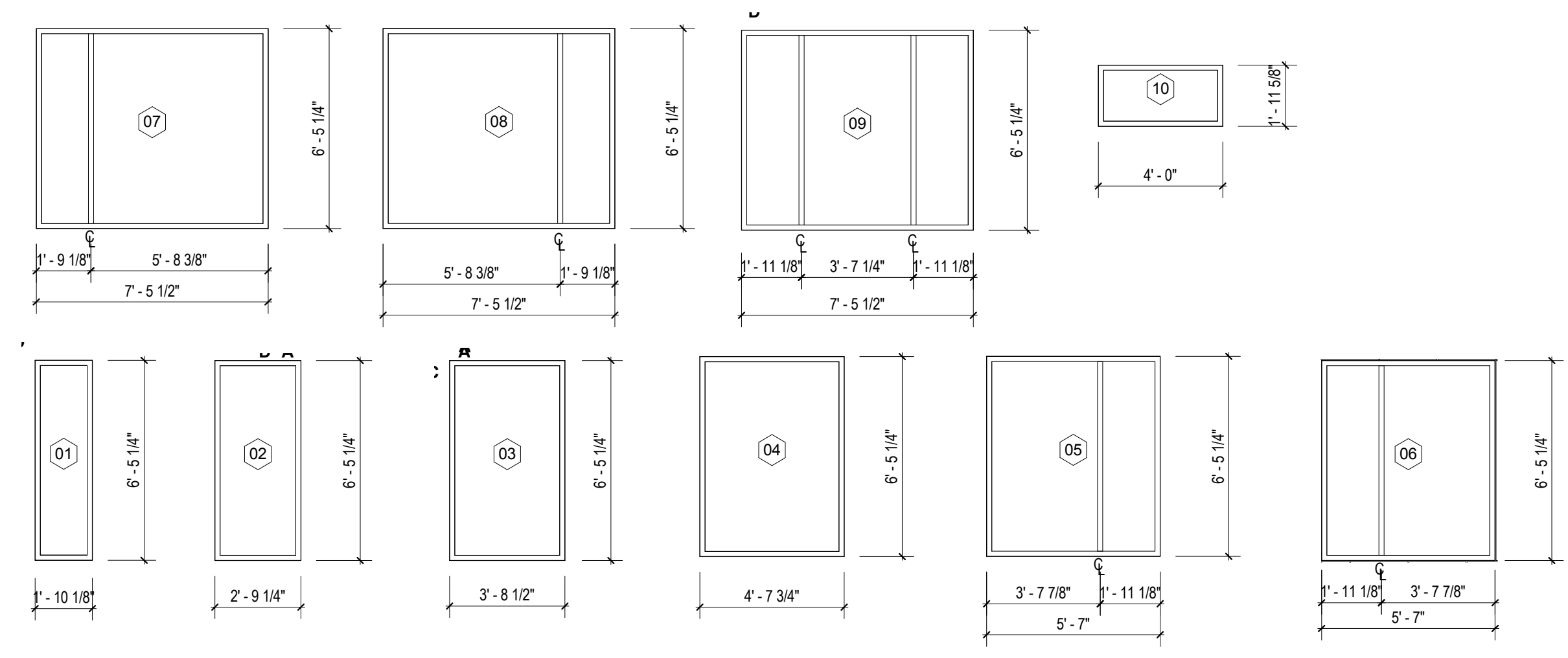


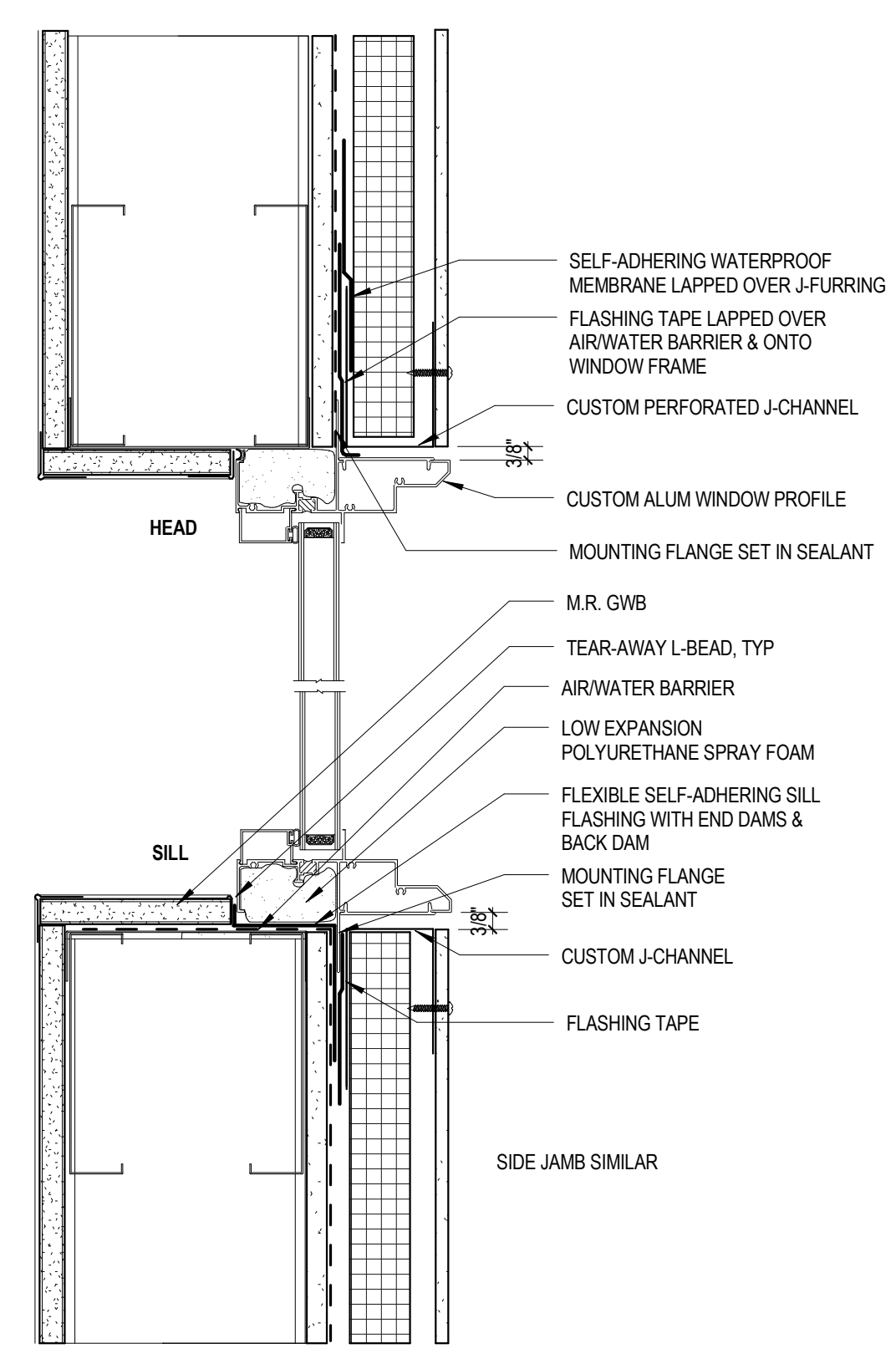
④ WINDOW ASSEMBLY 12
 1/4" = 1'-0"



③ WINDOW ASSEMBLY 11
 1/4" = 1'-0"



② WINDOW TYPES
 1/4" = 1'-0"



① DETAIL WINDOW HEAD & SILL PANEL
 SIDING
 3" = 1'-0"

Window Schedule		
Type	Width	Height
Skylight 60" x 60"	5' - 0"	5' - 0"
3		
Type 1 - 1'-10 1/8" x 6'-6"	1' - 10 1/4"	6' - 5 1/4"
38		
Type 2 - 2'-9 1/4" x 6'-6"	2' - 9 1/4"	6' - 5 1/4"
49		
Type 3 - 3'-8 1/2" x 6'-6"	3' - 8 1/2"	6' - 5 1/4"
31		
Type 4 - 4'-7 3/4" x 6'-6"	4' - 7 3/4"	6' - 5 1/4"
51		
Type 5 - 5' 7" x 6' 6"	5' - 7"	6' - 5 1/4"
13		
Type 6 - 5' 7" x 6' 6"	5' - 7"	6' - 5 1/4"
10		
Type 7 - 7' 5 1/2" x 6' 6"	7' - 5 1/2"	6' - 5 1/4"
7		
Type 8 - 7' 5 1/2" x 6' 6"	7' - 5 1/2"	6' - 5 1/4"
11		
Type 9 - 7' 5 1/2" x 6' 6"	7' - 5 1/2"	6' - 5 1/4"
6		
Type 10 - 3'-8 1/2" x 3'-6"	4' - 0"	1' - 11 3/4"
2		

NOTE:
 SEE ALSO WINDOW ASSEMBLIES 11 & 12, A55.1

Mark Date Description
 Project Status
**ISSUED FOR
 CONSTRUCTION**
 03-01-2013

Drawing Title
**WINDOW TYPES
 AND DETAILS**

Scale: As indicated
 Drawing Number

A55.1