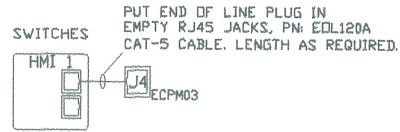
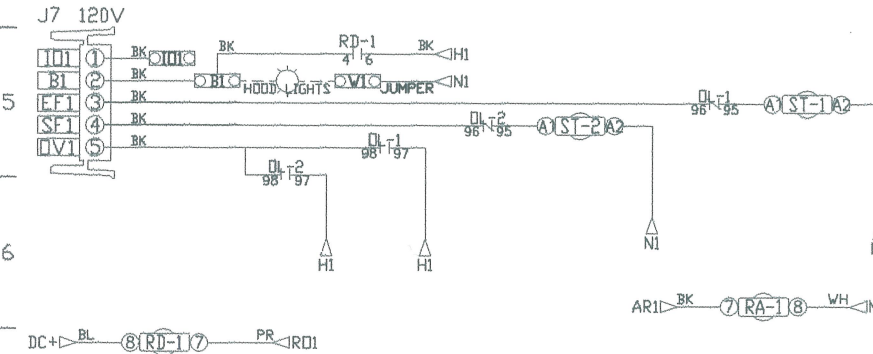
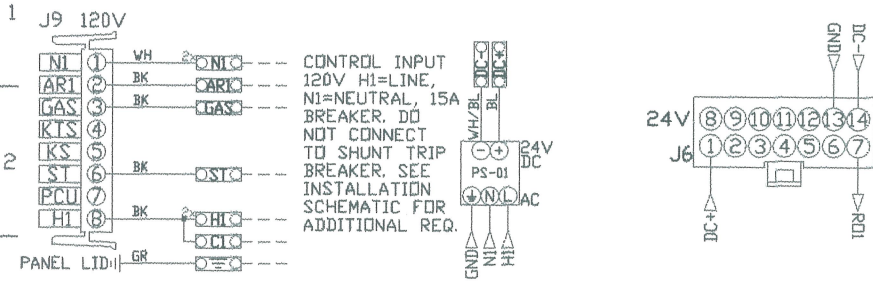
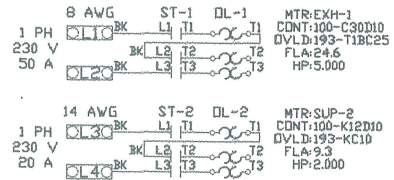


UNLESS SPECIFIED OTHERWISE, ALL FACTORY AC WIRING 16 AWG. ALL FACTORY DC WIRING 18 AWG.



MOTOR POWER CIRCUIT



FACTORY WIRING SCHEMATIC CIRCUIT BOARDS ECPM03 Rev. 1.36 HMI Rev. 1.06

RA-x	RD-x
120 VAC RELAY	24 VDC RELAY
NO 4 3	14 NO
NC 2 1	12 NC
COIL 8 7	+A1 A2 COIL
COM 6 5	11 COM

COMPONENT LIST

LABEL	DESCRIPTION
ST-x	Starter P#varies
DL-x	Overload P#varies
C-x	Contactors P#varies
PS-1	Power Sup. 24VDC P#NHP18-24A-1C
RA-x	120V Relay DPDT P#34J00B840
RD-x	24VDC Light Relay P#34J00B800

LEGEND

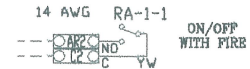
--- FIELD WIRING
 — FACTORY WIRING
 BK- BLACK YW- YELLOW
 BL- BLUE GY- GREY
 BR- BROWN PR- PURPLE
 OR- ORANGE RD- RED
 WH- WHITE
 OR/BL- OR/BL STRIPE
 BL/RD- BL/RD STRIPE
 RD/GN- RD/GN STRIPE
 WH/BL- WH/BL STRIPE

JOB NAME
 Old Port Lobster

DRAWING TITLE
 SC-21110FP

DESCRIPTION OF OPERATION
 220V 1 Phase w/ control for 1 Exhaust Fan, 1 Supply Fan, Exhaust on in Fire, Lights out in Fire, Fans On/Off Thermostatically Controlled. Room temperature sensor shipped loose for field installation.

DRY CONTACTS (SHOWN DE-ENERGIZED)



JOB NO	DRAWN BY
2692009	
TYPE	DATE
FACTORY	7/11/2016
DWG NO ECP #1-2	