

GENERAL ELECTRICAL NOTES

- 60. COMPLETE SYSTEMS. PROVIDE LABOR, MATERIALS, EQUIPMENT AND...
61. UTILITIES. COORDINATE WITH ALL UTILITIES SERVICES, NOTIFY UTILITIES...
62. SCOPE. WORK SHALL INCLUDE BUT NOT BE LIMITED TO THE FOLLOWING...
63. PERMITS. OBTAIN ALL NECESSARY PERMITS TO BEGIN AND CONTINUE WITH WORK...
64. COSTS AND CONTINGENTS. EXAMINE AND SECURE FAILURE WITH ALL CONTRACT...
65. REGULATIONS. ALL WORK SHALL BE PERFORMED IN ACCORDANCE WITH CURRENT...
66. CONSTRUCTION. COORDINATE WITH ALL OTHER TRADES, ONE SPECIAL...
67. IDENTIFICATION. ALL ELECTRICAL DISTRIBUTION EQUIPMENT, TRANSFORMERS...
68. INSTALLATION. ALL PRODUCTS SHALL BE NEW, SPECIFICATION GRADE...
69. COMPATIBILITY. ALL NEW ELECTRICAL DISTRIBUTION EQUIPMENT SHALL MATCH...
70. CONDUIT. PROVIDE TYPE THIN WALL, THIN, OR WAVE TYPE INSULATION...
71. WIRING. ALL CONDUCTORS CARRYING OVER 20 VOLTS SHALL BE MINIMUM...
72. INSULATION. PROVIDE TYPE THIN WALL, THIN, OR WAVE TYPE INSULATION...
73. TRANSPARENCY. PROVIDE TRANSPARENT ELECTRICAL CONDUIT FOR ALL...
74. CONDUIT. ALL WIRING SHALL BE IN CONDUIT UNLESS OTHERWISE NOTED...
75. ROAD CONDUIT. CONDUIT OVER 2" IN DIAMETER OR EXPOSED TO WEATHER...
76. ROLLING. CONDUIT ROLLING SHALL BE SYMBOLIC AND DIMENSIONAL...
77. CONDUIT FITTINGS. ALL FITTINGS SHALL BE COMPRESSION OR HEADED TYPE...
78. CIRCUIT BREAKERS. ALL BRANDS GREAT EQUIPMENT PROTECTION SYSTEMS...
79. MINIMUM. ALL 1/2" THROUGH 2" CONDUIT BREAKERS SHALL BE RATED AT 10,000 AC...
80. ALTERNATES & SUBSTITUTIONS. OBTAIN FROM APPROVAL TO DATE PRIOR TO PRESENTATION...
81. PENETRATIONS. COORDINATE FLOOR PENETRATIONS WITH STRUCTURAL ENGINEER...
82. TELEPHONE SYSTEMS. PROVIDE PARAPPEL CONDUIT, AND PULL STRINGS...
83. WIRING. ALL CONDUCTORS CARRYING OVER 20 VOLTS SHALL BE MINIMUM...
84. TRANSPARENT. PROVIDE TRANSPARENT ELECTRICAL CONDUIT FOR ALL...
85. CONDUIT. ALL WIRING SHALL BE IN CONDUIT UNLESS OTHERWISE NOTED...
86. ROAD CONDUIT. CONDUIT OVER 2" IN DIAMETER OR EXPOSED TO WEATHER...
87. ROLLING. CONDUIT ROLLING SHALL BE SYMBOLIC AND DIMENSIONAL...
88. CONDUIT FITTINGS. ALL FITTINGS SHALL BE COMPRESSION OR HEADED TYPE...
89. CIRCUIT BREAKERS. ALL BRANDS GREAT EQUIPMENT PROTECTION SYSTEMS...
90. MINIMUM. ALL 1/2" THROUGH 2" CONDUIT BREAKERS SHALL BE RATED AT 10,000 AC...
91. ALTERNATES & SUBSTITUTIONS. OBTAIN FROM APPROVAL TO DATE PRIOR TO PRESENTATION...
92. PENETRATIONS. COORDINATE FLOOR PENETRATIONS WITH STRUCTURAL ENGINEER...
93. TELEPHONE SYSTEMS. PROVIDE PARAPPEL CONDUIT, AND PULL STRINGS...

Panel Wiring Schedule (3-Phase)

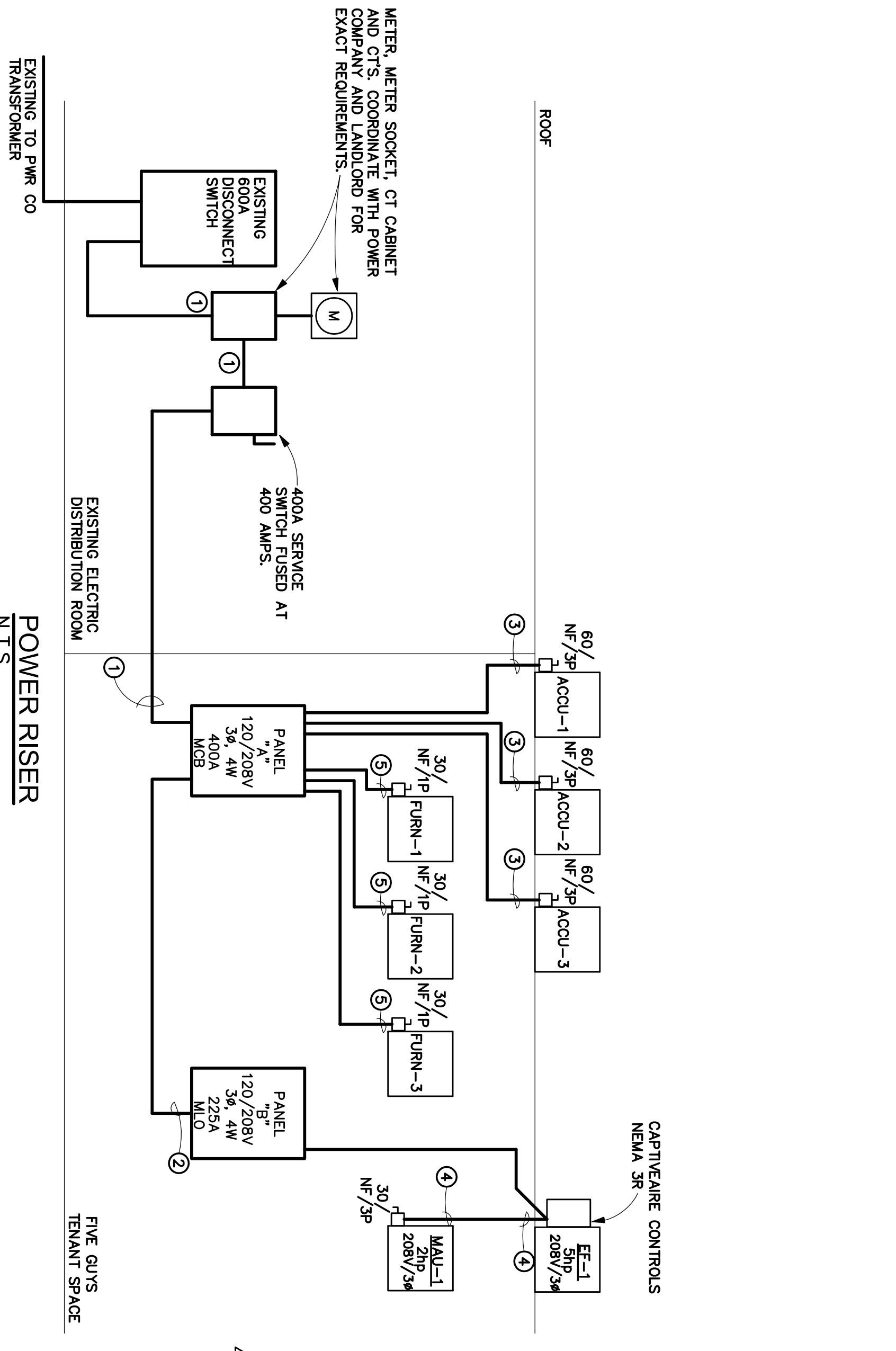
Table with columns: Panel No., Load Description, Breaker, Amps, Phase, Wire Size, Breaker, Amps, Wire Size, Breaker, Amps, Wire Size, Breaker, Amps, Wire Size. Includes notes on breaker ratings and load balancing.

Panel Wiring Schedule (3-Phase)

Table with columns: Panel No., Load Description, Breaker, Amps, Phase, Wire Size, Breaker, Amps, Wire Size, Breaker, Amps, Wire Size, Breaker, Amps, Wire Size. Includes notes on breaker ratings and load balancing.

LOAD SUMMARY

Table with columns: Description, N.E.C. Connected, Power Factor, N.E.C. Demand, N.E.C. Demand, N.E.C. Demand. Summarizes electrical loads for the project.



FEEDER SCHEDULE

Table with columns: Designation, Wire Size, Ground Size, Conduit Size. Lists feeder specifications for different circuits.

EXISTING CONDITION NOTES

THESE DRAWINGS ARE BASED ON INFORMATION PROVIDED TO OUR OFFICE AT THE TIME OF DESIGN. THEREFORE, IT IS THE CONTRACTOR'S RESPONSIBILITY TO VERIFY ALL EXISTING CONDITIONS AND REPORT ANY DISCREPANCIES TO THE ARCHITECT PRIOR TO BID. FAILURE TO DO SO MAY CONSTITUTE THAT THE CONTRACTOR PROVIDE ANY AND ALL ADDITIONAL EQUIPMENT, LABOR, ETC... TO MEET THE INTENDED DESIGN PARAMETERS.