

### BUILDING INFO

**BUILDING CODES:**  
 BUILDING: 2009 IBC - INTERNATIONAL BUILDING CODE  
 MECHANICAL: 2009 IMC - INTERNATIONAL MECHANICAL CODE  
 ELECTRICAL: 2008 NEC - NATIONAL ELECTRICAL CODE  
 PLUMBING: 2009 UPC - UNIFORM PLUMBING CODE

**ACCESSIBILITY:** ADAAG

**BUILDING INFORMATION:**  
 SHELL CONSTRUCTION TYPE: IIIA  
 TENANT SPACE INFORMATION:  
 SCOPE OF WORK: TENANT IMPROVEMENT/ INTERIOR BUILD OUT  
 LEASE AREA: 2515 SQ. FT.  
 INTERIOR AREA: 2483 S.F.  
 FIRE PROTECTION: SPRINKLED, ALARMED & PORTABLE FIRE EXTINGUISHER  
 INTERIOR FINISHES: CLASS C FLAME SPREAD RATING

**NUMBER OF EMPLOYEES:** 6  
**OCCUPANCY:** A2 - RESTAURANT

**CALCULATED OCCUPANCY LOAD:**

SPACE USE	AREA	OCCUPANT LOAD FACTOR	OCCUPANT LOAD
DINING	1335	15	89
KITCHEN	532	200	3
ACCESSORY STORAGE	616	300	2
TOTAL INTERIOR AREA:	2483	TOTAL:	94

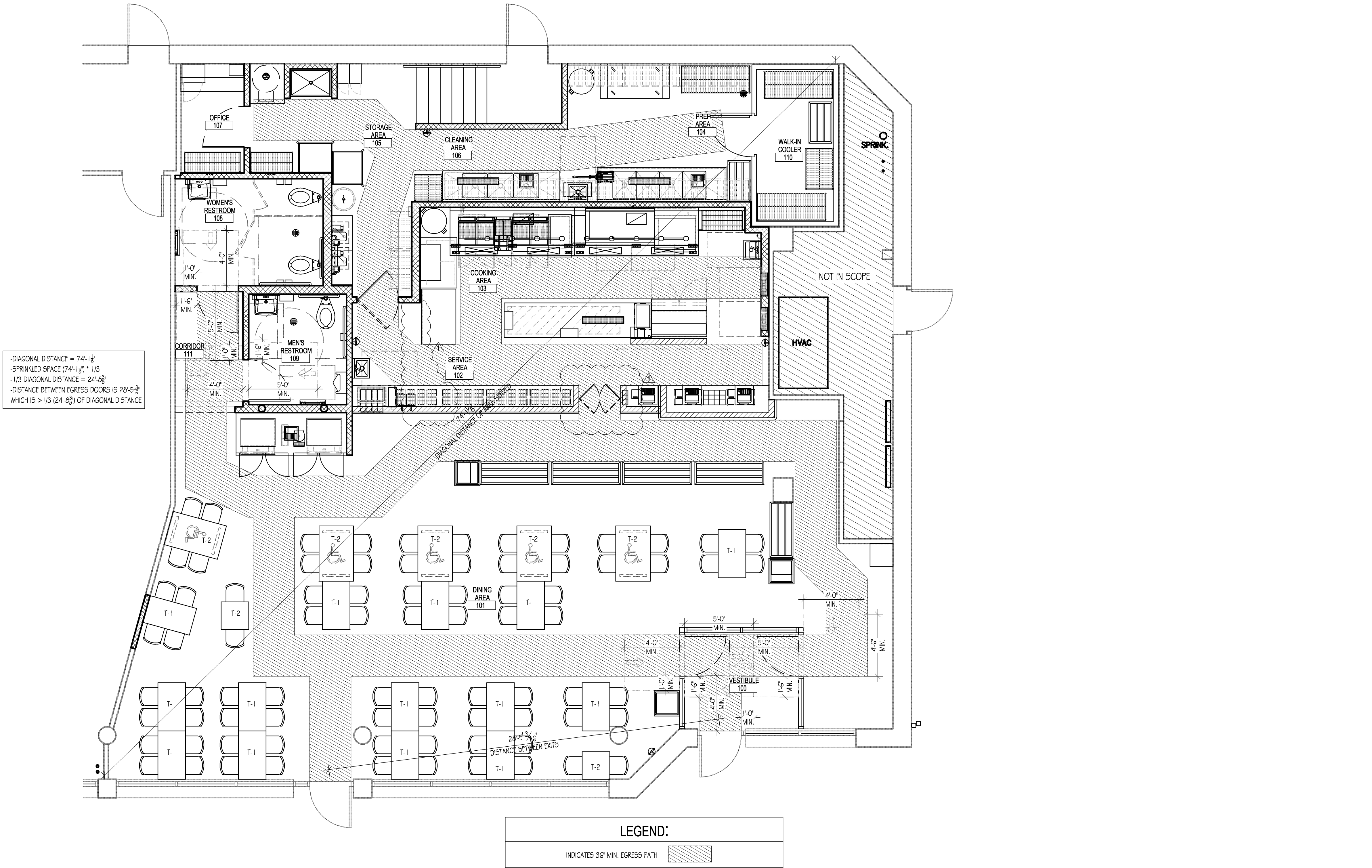
**NUMBER OF EXITS:** 2 REQUIRED - 3 PROVIDED

TYPE OF FIXTURE	MALE		FEMALE	
	REQUIRED	PROVIDED	REQUIRED	PROVIDED
WATER CLOSET	1 PER 50	1	1 PER 50	2
URINAL	1 PER 150	1	N/A	
LAVATORIES	1 PER 150	1	1 PER 150	1
SERVICE SINK (MOP SINK)	1 PROVIDED			

### SEATING TOTALS

AREA	TABLE SIZE	TABLE CODE	NO. OF TABLES	NO. OF SEATS
DINING AREA	24" x 42"	T-1	14	56
DINING AREA	24" x 24"	T-2	2	4
DINING AREA	30" x 48" (ADA)	T-3	5	10
TOTAL SEATING:				70
TOTAL ACCESSIBLE INDOOR SEATING: (5% OF TOTAL SEATING)				4

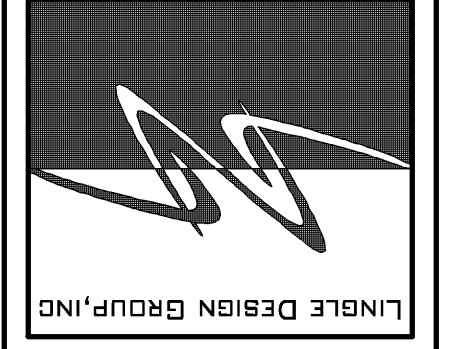
- ### GENERAL NOTES
- ALL NEW AND/OR REMODELING WORK UNDER THIS CONTRACT SHALL COMPLY WITH THE FOLLOWING STANDARDS WHERE APPLICABLE.
  - HANDICAP PARKING SPACES AND ACCESS AISLES SHALL BE LEVEL WITH SURFACE SLOPES NOT EXCEEDING 1:50 (2%) IN ALL DIRECTIONS.
  - MAXIMUM OFFSETS AT DOORWAY THRESHOLDS (INCLUDING THRESHOLD) SHALL NOT EXCEED 1/2".
  - THE SWEEP PERIOD OF THE CLOSER SHALL BE ADJUSTED SO THAT FROM AN OPEN POSITION OF 70 DEGREES, THE DOOR WILL TAKE AT LEAST 3 SECONDS TO MOVE TO A POINT 3" FROM THE LATCH, MEASURED TO THE LEADING EDGE OF THE DOOR.
  - ELECTRICAL SWITCHES SHALL BE MOUNTED 44" ABOVE THE FINISHED FLOOR AND COMMUNICATION SYSTEM RECEPTACLES, OUTLETS, ETC., SHALL BE MOUNTED 15" ABOVE THE FINISHED FLOOR.
  - CONTROLS AND OPERATION MECHANISMS SHALL BE OPERABLE WITH ONE HAND AND SHALL NOT REQUIRE TIGHT GRASPING, PINCHING, OR TWISTING OF THE WRIST. THE FORCE REQUIRED TO ACTIVATE CONTROLS SHALL BE NOT GREATER THAN 5 LBF.
  - VISUAL ALARM SIGNAL APPLIANCES SHALL BE INTEGRATED INTO THE BUILDING OR FACILITY PLACED 85 IN. ABOVE THE HIGHEST FLOOR LEVEL WITHIN THE SPACE OR 6 IN. BELOW THE CEILING, WHICHEVER IS LOWER.
  - CURB RAMP SURFACES: TEXTURE SHALL CONSIST OF EXPOSED CRUSHED STONE AGGREGATE, ROUGHENED CONCRETE, RUBBER, RAISED ABRASIVE STRIPS, OR GROOVES EXTENDING THE FULL WIDTH AND DEPTH OF THE CURB. RAMPS SHALL HAVE A LIGHT REFLECTIVE VALUE AND TEXTURE THAT SIGNIFICANTLY CONTRASTS WITH THAT OF ADJOINING PEDESTRIAN ROUTES.
  - WHERE PROVIDED, AUDIBLE EMERGENCY ALARMS SHALL PRODUCE A SOUND THAT EXCEEDS THE PREVAILING EQUIVALENT SOUND LEVEL IN THE ROOM OR SPACE BY AT LEAST 15 DBA OR EXCEED ANY MAXIMUM SOUND LEVEL WITH A DURATION OF 60 SECONDS BY 5 DBA, WHICHEVER IS LOUDER. SOUND LEVELS FOR ALARM SIGNALS SHALL NOT EXCEED 120 DBA.



ACCESSIBILITY PLAN

SCALE: 1/4" = 1'-0"

LINLEEDesignGroup, INC.  
 158 WEST MAIN STREET  
 LENA, IL 61048  
 PHONE: 815-369-9155  
 FAX: 815-369-4495  
 WWW.LINLEEDesign.COM



© ALL DRAWINGS AND WRITTEN MATERIAL CONTAINED HEREIN ARE THE PROPERTY OF THE LINLEEDesignGroup, INC. THEY MAY NOT BE REPRODUCED, COPIED, REUSED, OR DISCLOSED IN ANY MANNER WITHOUT WRITTEN AUTHORIZATION FROM THE ARCHITECT.

# FIVE GUYS

PORTLAND, MAINE 04101-4396

REVISIONS:

#	DATE	DESCRIPTION
1	12/15/2010	ISSUED FOR PERMIT
2	01/27/2011	REVISED PER L.L. MUNICIPAL & CORP. COMMENTS
3	02/08/2011	ISSUED FOR CONSTRUCTION

PROJECT NUMBER: 10-1033  
 DRAWN BY: SRM  
 CHECKED BY: BVE

SHEET TITLE:  
**ACCESSIBILITY PLAN**

SHEET NUMBER:  
**G100**