

PLUMBING NOTES:

- ALL LABOR, MATERIALS AND WORKMANSHIP SHALL BE IN ACCORDANCE WITH ALL APPLICABLE CODES : NATIONAL, STATE AND LOCAL. ALL WORK SHALL BE PERFORMED AND INSTALLED IN A NEAT AND WORKMAN LIKE MANNER.NO EXTRA CHARGE WILL BE PAID FOR FURNISHING ITEMS REQUIRED BY THE REGULATIONS, BUT NOT SPECIFIED HEREIN OR ON THE DRAWINGS.
- PAY ALL FEES AND OBTAIN ALL PERMITS NECESSARY FOR THE COMPLETION AND INSPECTION OF THIS WORK, NOTIFY ALL INTERESTED AUTHORITIES WHEN THIS WORK IS READY FOR ANY NECESSARY INSPECTION.
- VISIT THE SITE OF THE WORK. COMPARE IT WITH THE DRAWINGS AND SPECIFICATIONS AS TO THE CONDITIONS UNDER WHICH WORK IS TO BE PERFORMED, ASCERTAIN AND CHECK ALL CONDITIONS AND ELEVATIONS AND TAKE ALL MEASUREMENTS WHICH MAY AFFECT THE WORK. NO ALLOWANCE SHALL SUBSEQUENTLY BE MADE FOR ANY EXTRA EXPENSE OR CLAIMS DUE TO FAILURE OR NEGLECT UNDER THIS SECTION TO MAKE SURE EXAMINATION OF THE RESTRICTED WORKING CONDITION OR SUCH OTHER DIFFICULTIES VISUALLY OBSERVED DURING SITE VISIT.
- PLUMBER SHALL DETERMINE TOTAL PROJECT REQUIREMENTS AND DETERMINE IF INCREASED SIZE OF SERVICE IS REQUIRED FOR GAS OR WATER. IF SO BID PRICE SHALL INCLUDE WORK FOR NEW METERS, PIPING AND SERVICE CONNECTION COORDINATE AS SOON AS POSSIBLE WITH LOCAL SERVING AGENCY AND WATER DEPARTMENT.
- INSTALL FLOOR, WALL OR CEILING CLEANOUT WHERE REQUIRED BY CODE OR WHERE IT WILL ALLOW FOR BEST ACCESS FOR CLEANING OUT BLOCKAGE IN PIPES.
- PIPE HANGERS SHALL BE DESIGNED TO SUPPORT WEIGHT OF PIPE AND WEIGHT OF THE CONTENTS IN THE PIPE.
- SLOPE ALL DRAINAGE PIPING WITHIN THE BUILDING WITH A MINIMUM FLOW FALL OF 1/4" PER FOOT.
- PROVIDE A VACUUM BREAKER OR BACK FLOW PREVENTION DEVICE AT MOP SINK ( INTEGRAL PART OF FAUCET )
- PROTECT WATER LINE CONNECTIONS TO EQUIPMENT WITH APPROVED BACKFLOW
- PLUMBER TO PROVIDE ESCUTCHEON COVERS, RINGS ETC. AT ALL FLOOR, WALL AND CEILING PENETRATIONS FOR PLUMBING .
- ALL PLUMBING FIXTURES SHALL BE N.S.F. APPROVED OR EQUAL.
- WATER PIPING SHALL BE TYPE L COPPER WITH LEAD FREE COPPER SOLDERED FITTINGS.
- PROVIDE WATER HAMMERS AT ALL QUICK ACTING VALVES.
- PIPING SHALL BE FABRICATED OF TYPE"L" HARD DRAWN COPPER MADE OF DEOXIDIZED COPPER (99.9% PURE). TYPE"L" COPPER PIPING SHALL CONFORM IN EVERY DETAIL TO ASTM STANDARD SPECIFICATIONS FOR COPPER WATER TUBE. SERIAL DESIGNATION B88.51 AND SHALL PROVIDED IN 20 FEET STRAIGHT LENGTH.
- ALL GAS PIPING INSIDE THE BUILDING AND ABOVE GRADE SHALL BE SCHEDULE 40 STANDARD WEIGHT BLACK STEEL PIPE WITH BLACK MALLEABLE IRON SCREWED TYPE FITTING. AND COMPLY WITH ANSI/ASME B36.10, WELDED AND SEAMLESS WROUGHT-STEEL PIPE OR ASTM 53 STANDARD SPECIFICATION FOR PIPE, STEEL, BLACK AND HOT DIPPED, ZINC-COATED WELDED AND SEAMLESS
- TRAP PRIMER PIPING SHALL BE SAME AS SPECIFIED FOR DOMESTIC WATER AS SPECIFIED NOTE #15.
- CONDENSATE PIPING TO BE TYPE "L" HARD DRAWN COPPER. AS SPECIFIED NOTE # 15.

SPECIFICATIONS

- 4" Inlet/Outlet Sch. 40, Plain End (No-Hub)
- Max flow rate: 100 GPM
- Liquid capacity: 275 Gallons
- Max grease capacity: 1,075 lbs. (147.4 Gallons)
- Max solids/settling capacity: 108 Gallons
- Unit weight w/stand, covers: 230 lbs
- Maximum operating temperature: 150°F continuous.
- Highway Rated cover: 16,000 lb. capacity (standard)
- Seamless molded polyethylene tank.

NOTES

- Listed by IAPMO to ASME grease interceptor standard A112.14.3 and CSA B481.1
- Factory installed Built-in Flow control.
- For gravity drainage applications only.
- Do not use for pressure applications.
- Seamless high density polyethylene tank.
- Unit supplied with built-in adapter(s) for up to 6" of adjustability. Additional riser(s) available for deeper burial depth.
- Cover placement allows full access to tank for proper maintenance.
- Vent not required unless per local code.
- Narrow footprint allows clearance through doorways and down stairwells.
- Engineered inlet and outlet diffusers are removable to inspect/clean piping.
- For on-the-floor or buried applications.
- Integral air relief / Anti-siphon / Sampling access.
- Three outlet options for easy rough in. Unit shipped with outlet diffuser in outlet "B".

DIFFUSION FLOW TECHNOLOGY

The inlet diffuser splits incoming effluent into two paths that utilize the entire liquid volume of the tank for efficient grease separation. The calibrated openings greatly reduce effluent turbulence. The effluent enters the main chamber without disturbing the existing grease or sediment layers.

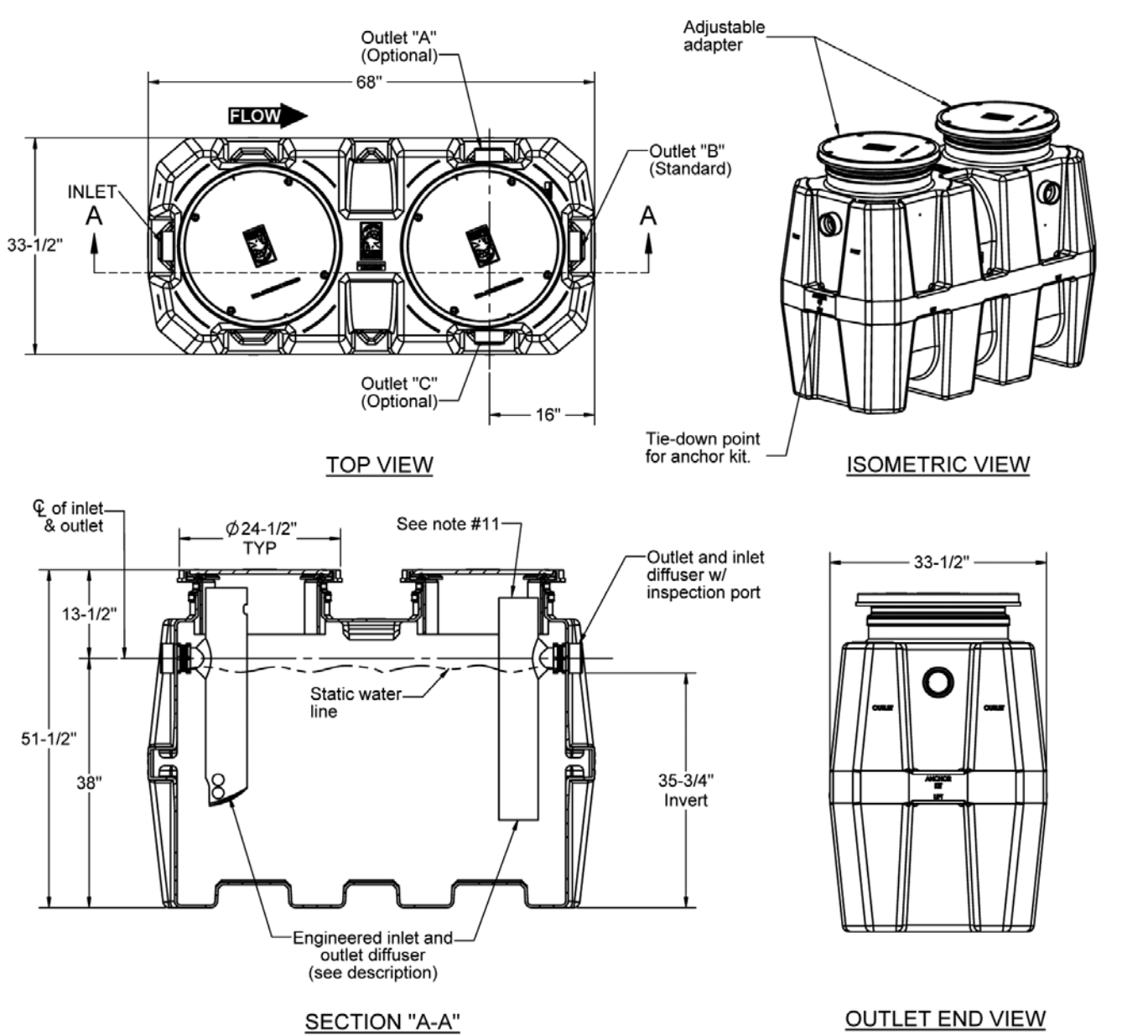
The integral air relief / anti-siphon in the top of the outlet diffuser allows pressure stabilization within the unit during operation. The bottom of the outlet diffuser allows only effluent which is free of grease to exit the tank. It can easily be attached to any of the three outlets provided to ease jobsite piping layouts.

ENGINEER SPECIFICATION GUIDE

Schier Great Basin™ grease interceptor model # GB-250 shall be lifetime guaranteed and made in USA of seamless, rotationally-molded High Density Polyethylene. Interceptor shall be furnished for above or below grade installation. Interceptor shall be certified to ASME A112.14.3 (type C) and CSA B481.1, with field adjustable riser system, built-in flow control, built-in test caps and three outlet options. Interceptor flow rate shall be 100 GPM. Interceptor grease capacity shall be 1,075 lbs. Cover shall provide water/gas-tight seal and have minimum 2,000 lbs. load capacity.

OPTIONS:

- High Rated Cast Iron Cover: 20,000lb. capacity
- Pedestrian rated cover: 2,000 lb. capacity
- Teleside field adjustable risers for extending covers to grade
- Male pipe thread connections
- 6" Plain end pipe connections (Inlet/Outlet "B" only)
- High water anchor kit
- Clamping collar kit



MODEL NUMBER: GB-250 PART NUMBER: 4055-001-XX

DESCRIPTION: 100 GPM POLYETHYLENE GREASE INTERCEPTOR

DWG BY: N.EBERT DATE: 07/02/2014 REV: 9 ECO: 1035

SPECIFICATION SHEET

Schier Products  
9600 Woodend Road  
Edwardsville, KS 66111  
Tel: 800-527-7119  
Fax: 800-527-9964  
www.schierproducts.com



Made in the U.S.A.

FIXTURE UNITS

FIXTURE TYPE	# OF UNIT	WATER PIPING			WASTE PIPING	
		C.W. F.U.PER FIX.	TOTAL CW F.U.	TOTAL HW F.U.	F.U. PER FIXTURE	TOTAL SS F.U.
HAND SINK	2	2	4	3	2	4
3 COMP SINK	2	6	12	12	4	4
PREP SINK	1	2	2	1.5	F.S.	F.S.
ICE MAKER	2	1	2	-	F.S.	F.S.
MOP SINK	1	3	3	2.5	3	3
DISH WASHER	1	-	-	1	4	4
FLOOR DRAIN	4	-	-	-	2	4
LAVATORY	2	1	2	2	1	2
WATER CLOSET	2	5	10	-	4	8
FLOOR SINK	3	-	-	-	-	-
TOTAL			41	22		29

WATER PIPE AND METER SIZE

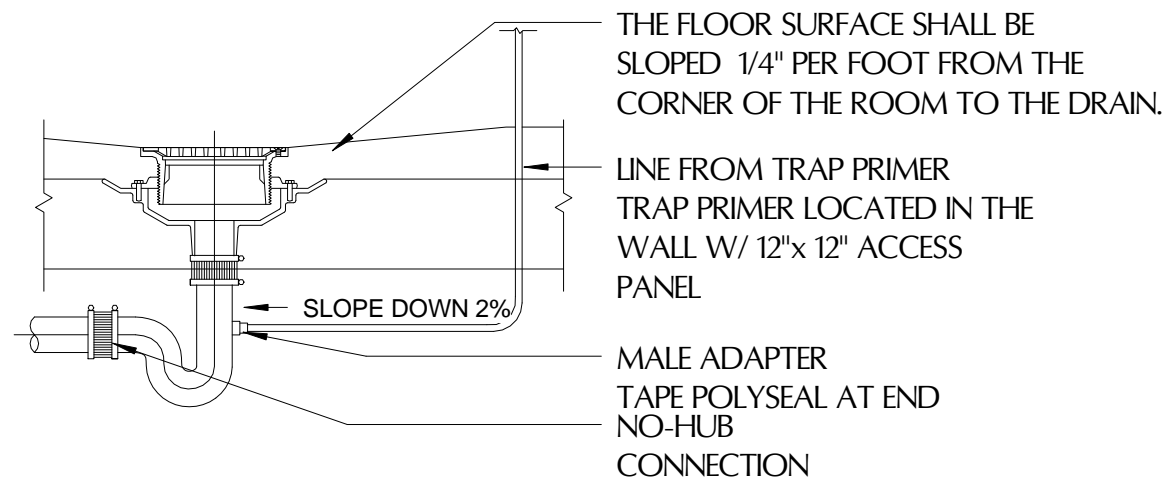
LENGTH OF 170 FT  
1-1/4" CW DISTRIBUTING BUILDING SUPPLY  
PIPE V.I.F.

SEWER PIPE SIZE

(E) SEWER MAIN 4" V.I.F.

SYMBOL	DISCRIPTION	MATERIAL
	SANITARY SEWER	
	GREASE WASTE	
	VENT	CAST IRON
	COLD WATER	COPPER "L"
	HOT WATER	COPPER "L"
	GAS	
	FLOOR SINK	
	FLOOR DRAIN	
	WATER HEATER	
	EXISTING	
	NEW	
	FLOOR CLEANOUT	
	WALL CLEANOUT	
	TRAP PRIMER	
	WATER HAMMER ARRETOR	
	BACK FLOW PREVENTER	

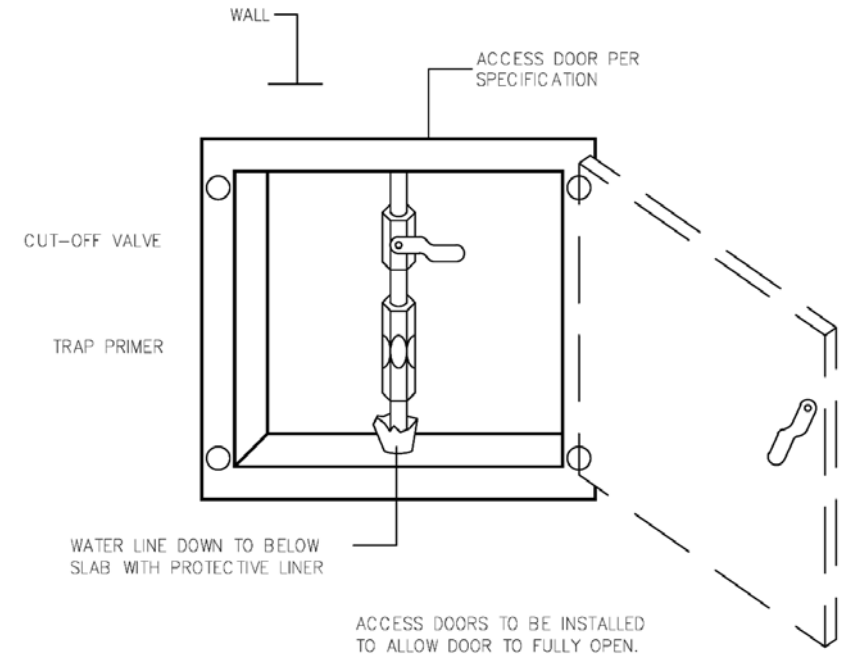
NOTE: ALL COPPER LINE TO BE TYPE"L" U.O.N.



NOTE: INSTALL TRAP PRIMERS FOR ALL FLOOR DRAINS

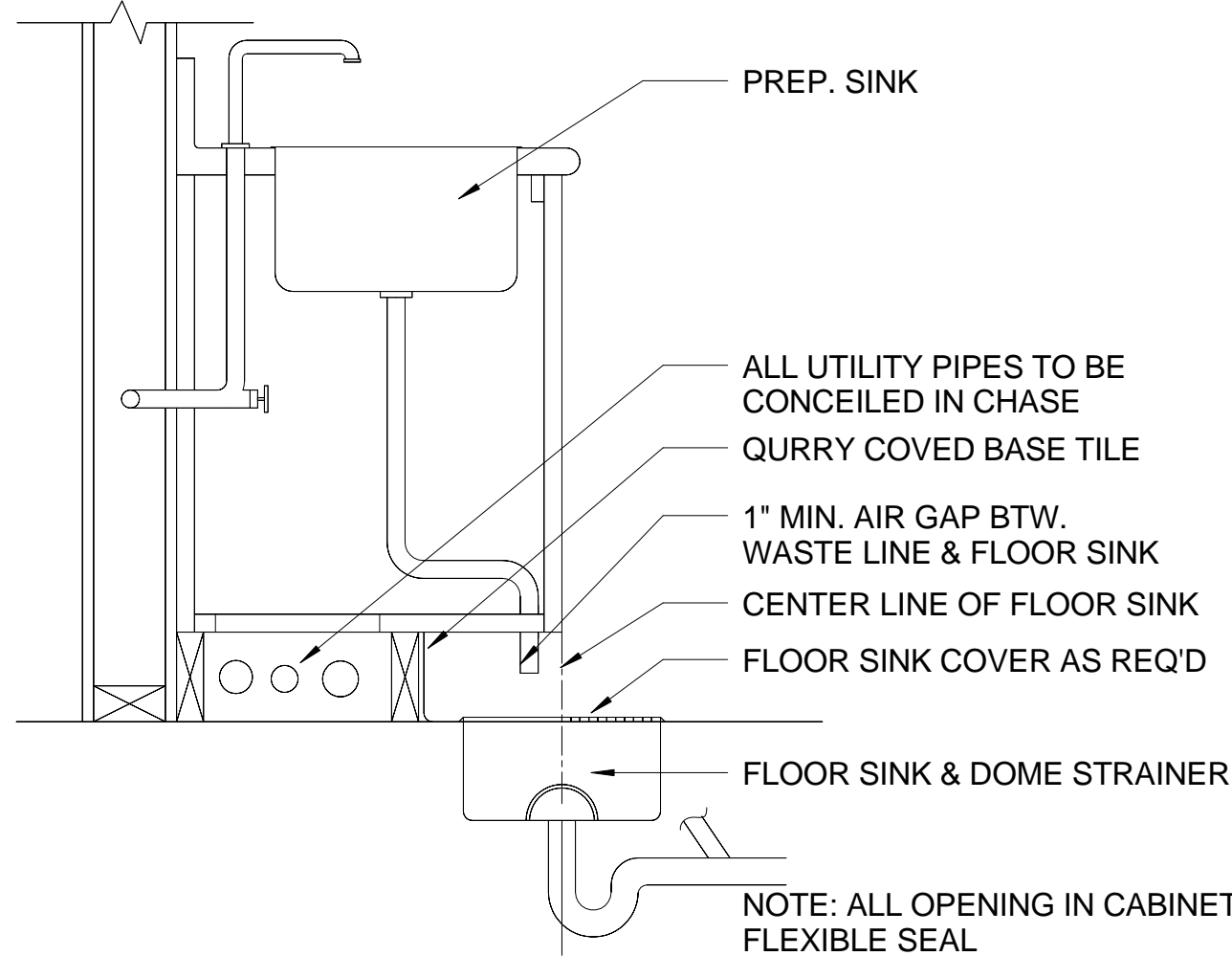
2 TYPICAL FLOOR DRAIN DETAIL

1 1/2" = 1'-0"



3 TRAP PRIMER

1/16" = 1'-0"



4 SECTION @ PREP. SINK

3/4" = 1'-0"

REVISION

Tenant Improvement  
Old Port Lobster Shack  
425 FORE STREET  
PORTLAND ME

PROJECT NUMBER 150101

DRAWN Author

CHECKED Checker

DAT E

SCALE

PLUMBING LEGEND, NOTES, SPECIFICATION

P-1.1