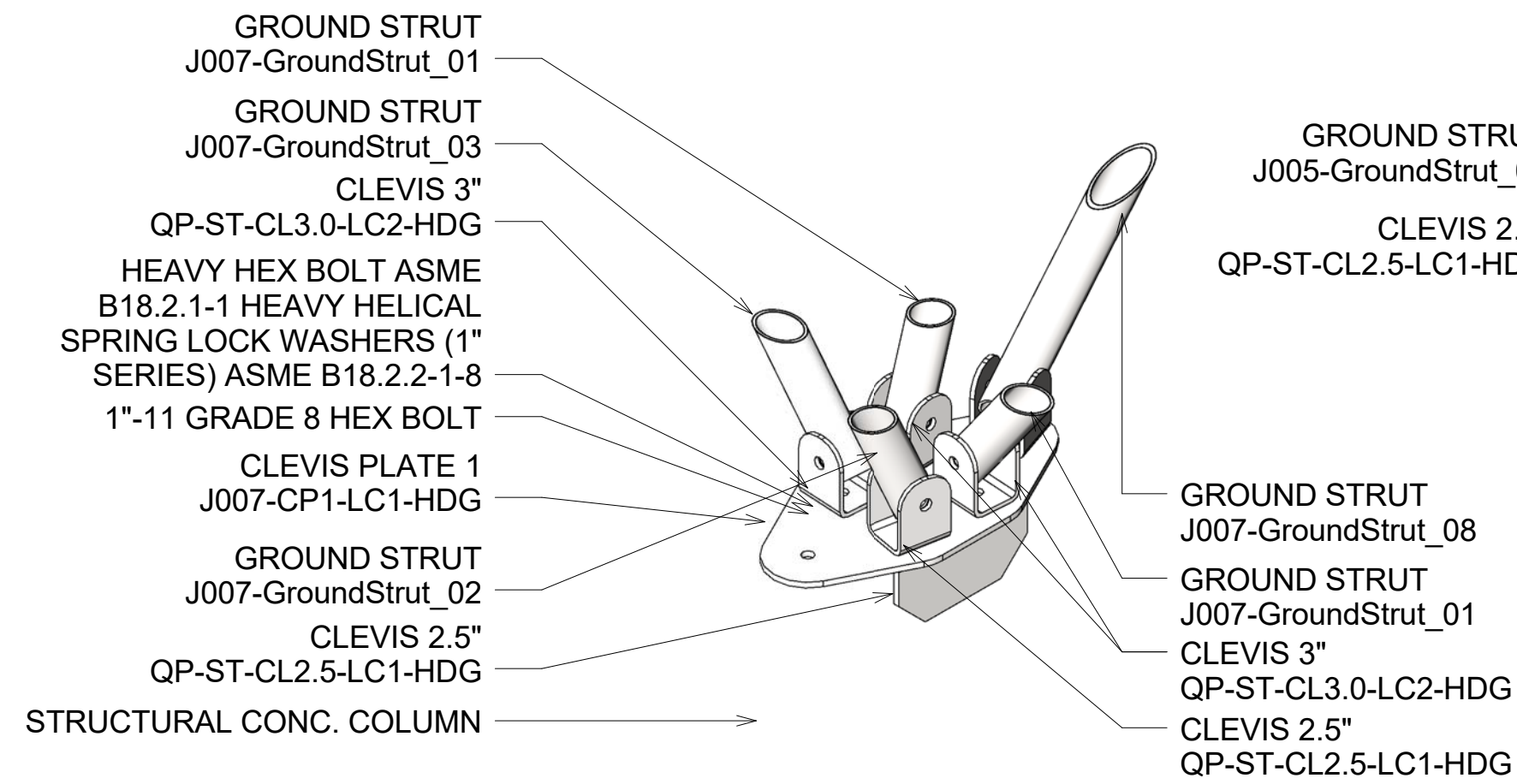
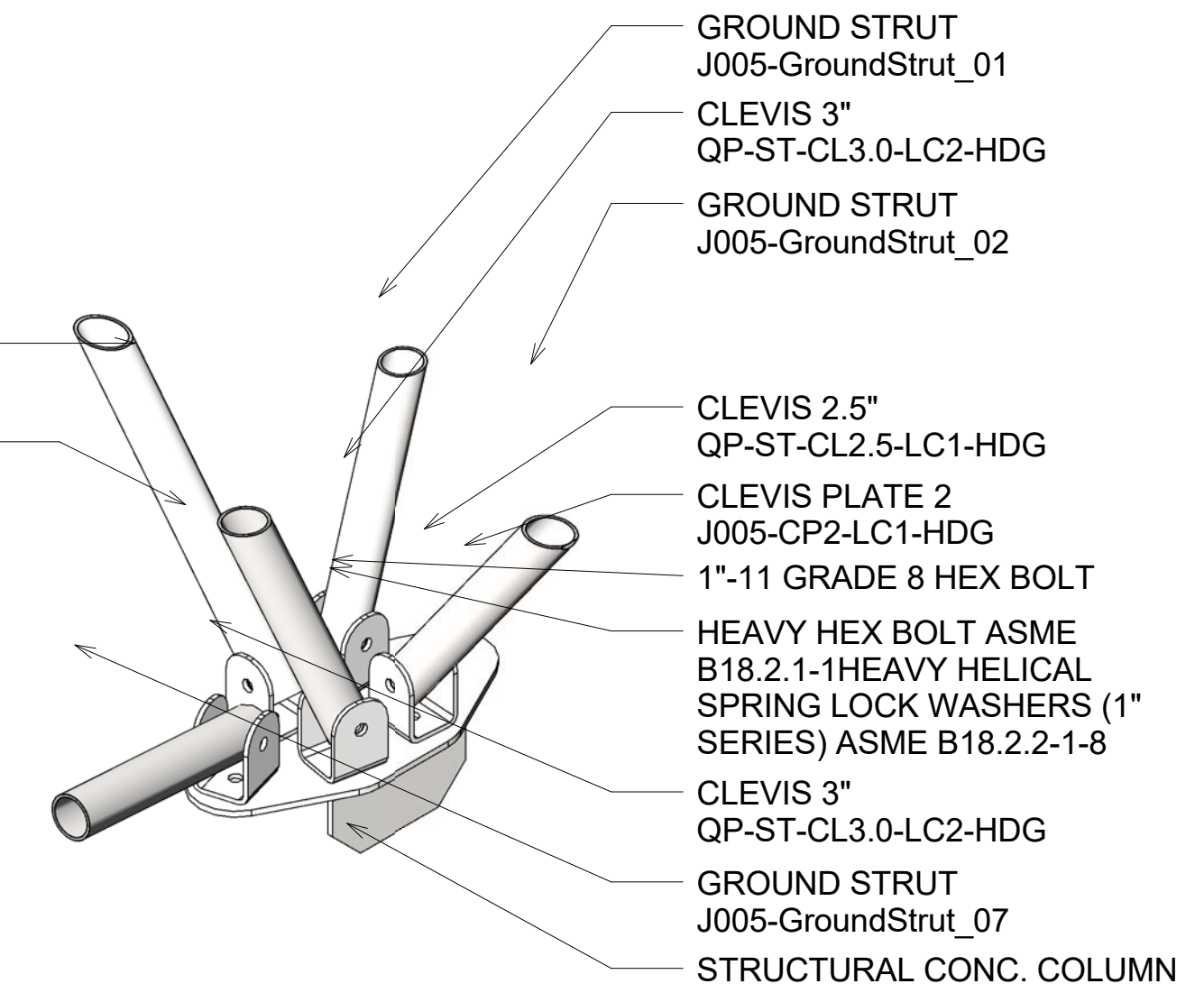


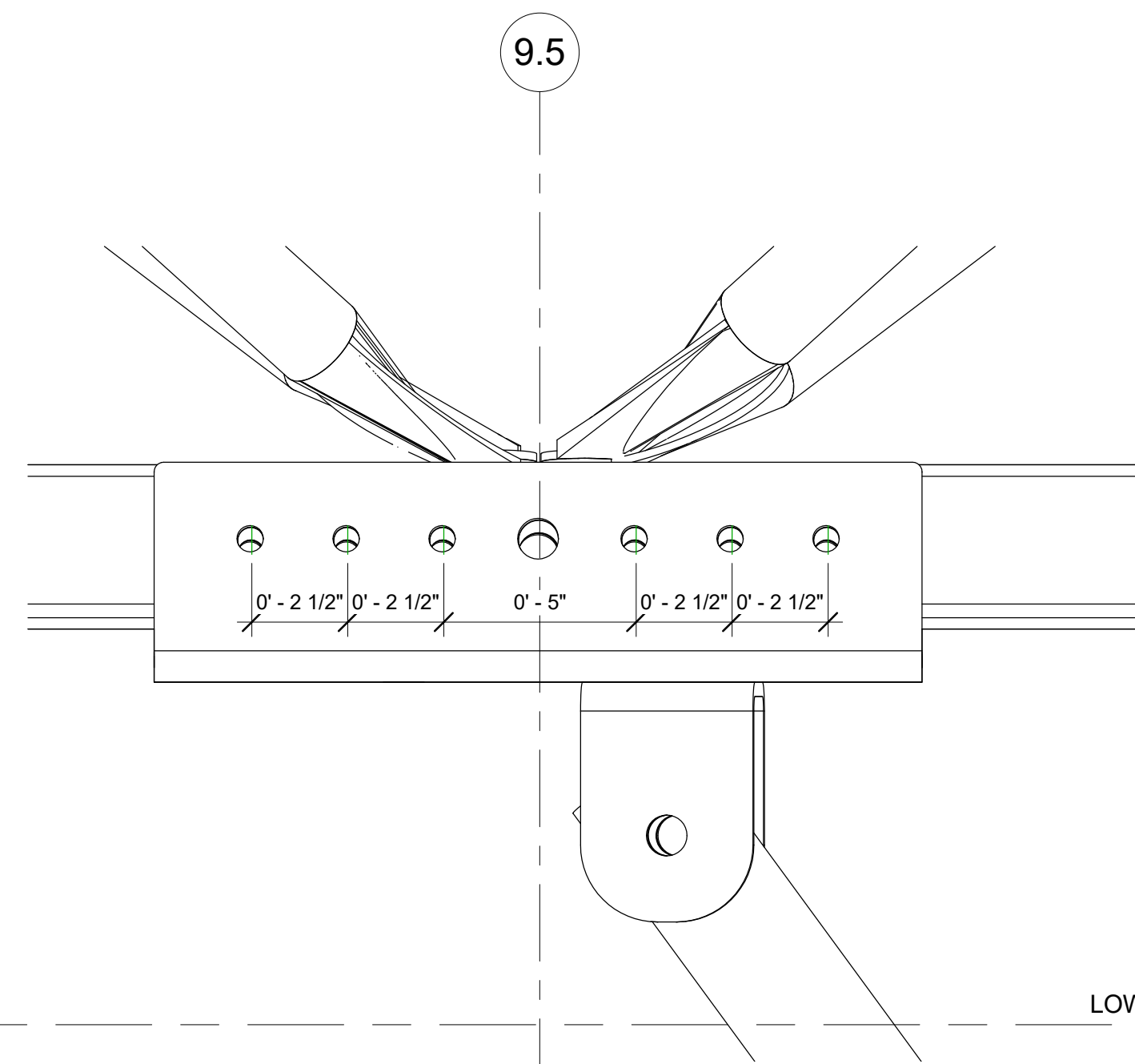
1 DETAIL AXON - LC TO CLEVIS



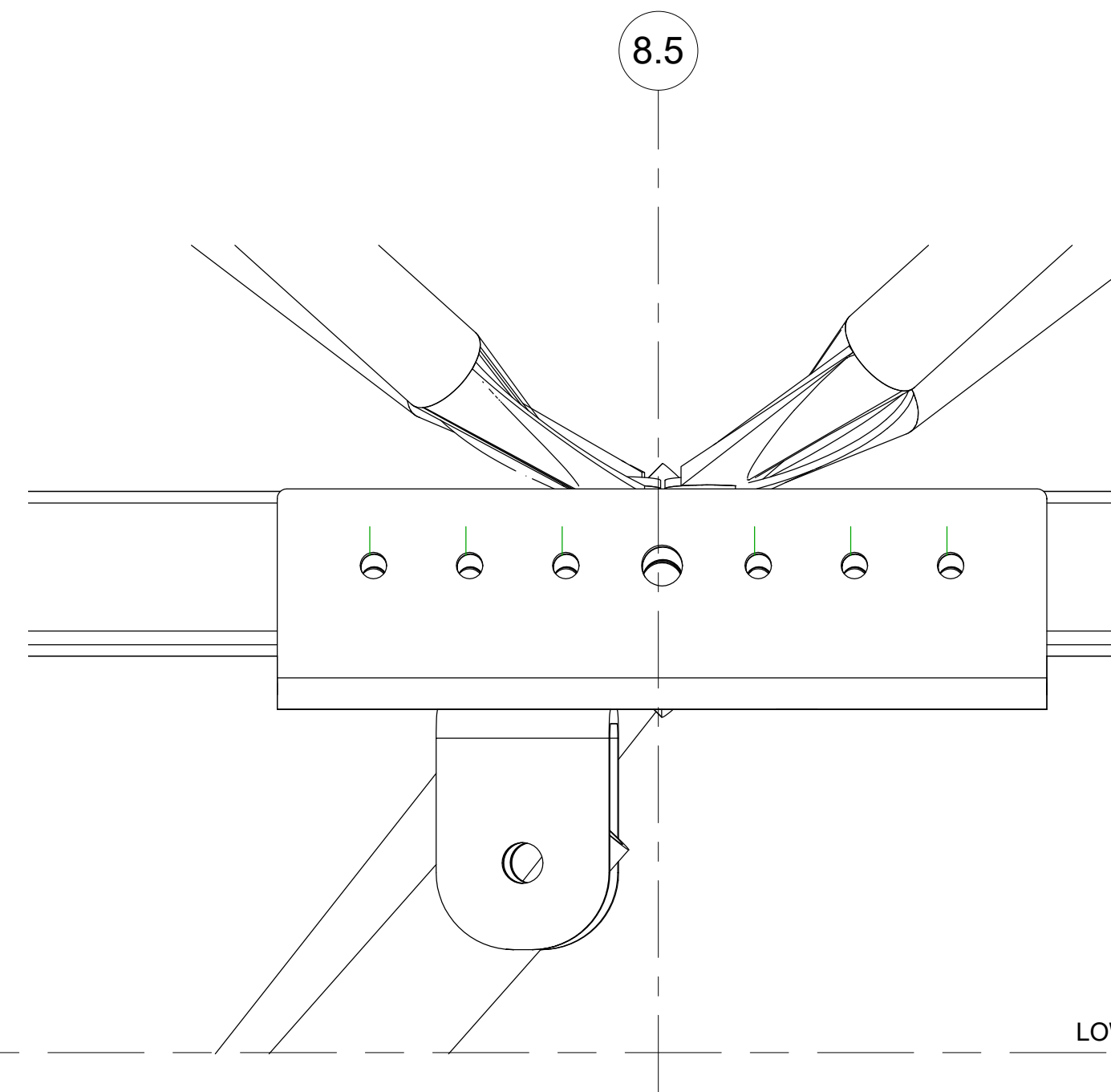
5 DETAIL AXON - BASEPLATE TO COLUMN 2



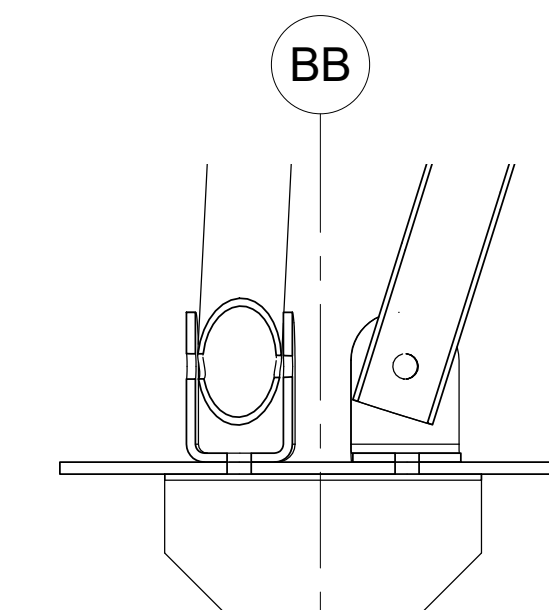
6 DETAIL AXON - BASEPLATE TO COLUMN



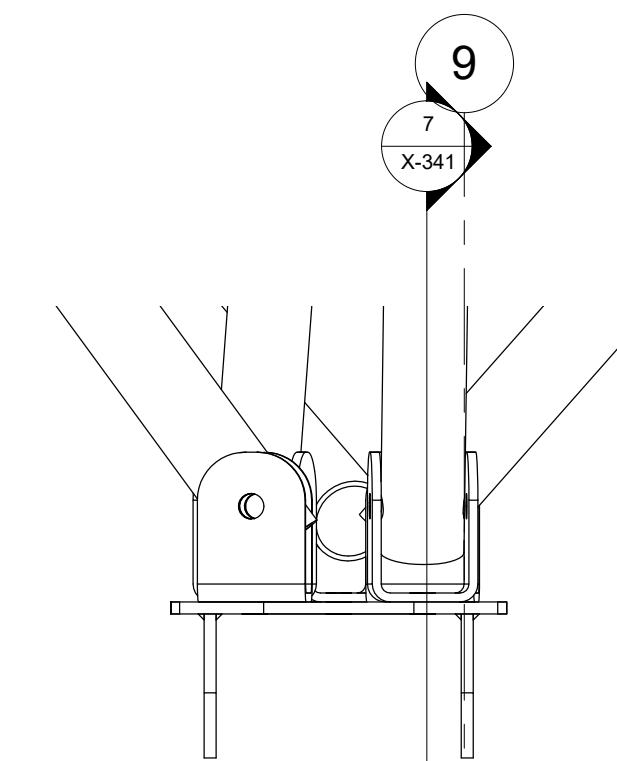
2 ELEVATION DETAIL - WEDGE SPLICE TO SUBSTRUCTURE - DOUBLE CLEVIS
3" = 1'-0"



3 ELEVATION DETAIL - WEDGE SPLICE TO SUBSTRUCTURE - SINGLE CLEVIS
3" = 1'-0"



7 SECTION DETAIL - SUBSTRUCTURE TO BASE PLATE - 2 CLEVIS
1 1/2" = 1'-0"



8 ELEVATION DETAIL - SUBSTRUCTURE TO BASE PLATE - 3 CLEVIS
1 1/2" = 1'-0"

QUEST RENEWABLES
 75 5th ST. NW, SUITE 2150
 ATLANTA, GA 30308

www.questrenewables.com
 (404) 536-5787

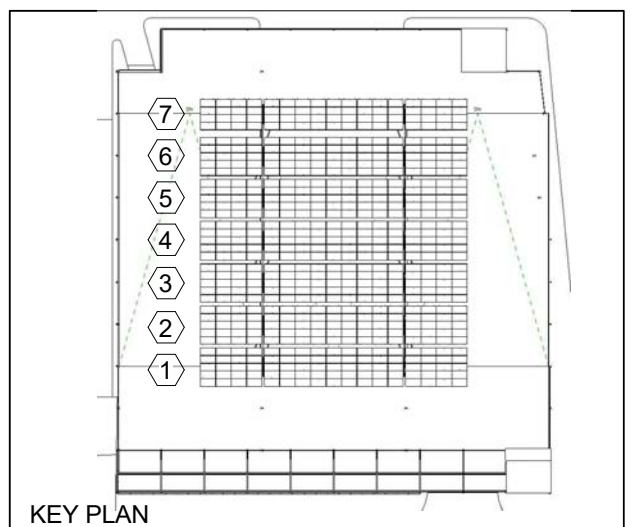
STRUCTURAL CONSULTANT:
AO STRUCTURES
 P.O. BOX 413
 CARNELIAN BAY, CA,
 96140
 916.514.8586
 www.AOstructures.com

CLIENT:
REVISION ENERGY
 142 PRESUMPCOT ST.
 PORTLAND, ME 04103
 (207)221-6342
 joshd@ReVisonEnergy.com

FORE STREET PARKING GARAGE
 PARKING DECK CANOPY
 425 FORE ST,
 PORTLAND, ME 04101

QUADPOD CANOPY SYSTEM
 193.6 kW DC
 578 PV MODULES
 5.00° DEGREE TILT
 150.00° DEGREE AZIMUTH

#	DESCRIPTION	DATE
1	ISSUED FOR PERMIT	04/05/2017



SEALS

CONFIG 01 - SUBSTRUCTURE ASSEMBLY DETAILS

PROJECT NUMBER J007
 DATE 03/31/2017
 DRAWN BY JD CHECKED BY JEK

X-341