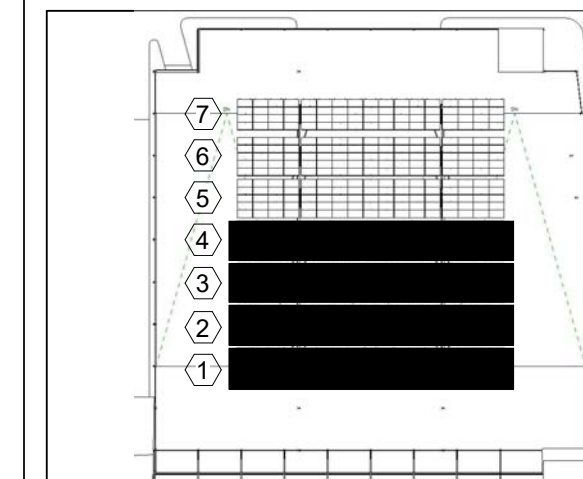


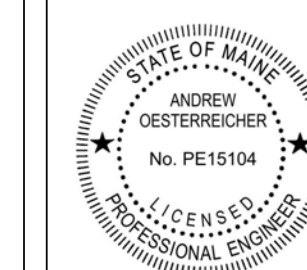
**FORE STREET PARKING GARAGE**  
PARKING DECK CANOPY  
425 FORE ST,  
PORTLAND, ME 04101

**QUADPOD CANOPY SYSTEM**  
193.6 kW DC  
578 PV MODULES  
5.00° DEGREE TILT  
150.00° DEGREE AZIMUTH

#	DESCRIPTION	DATE
1	ISSUED FOR PERMIT	04/05/2017



KEY PLAN

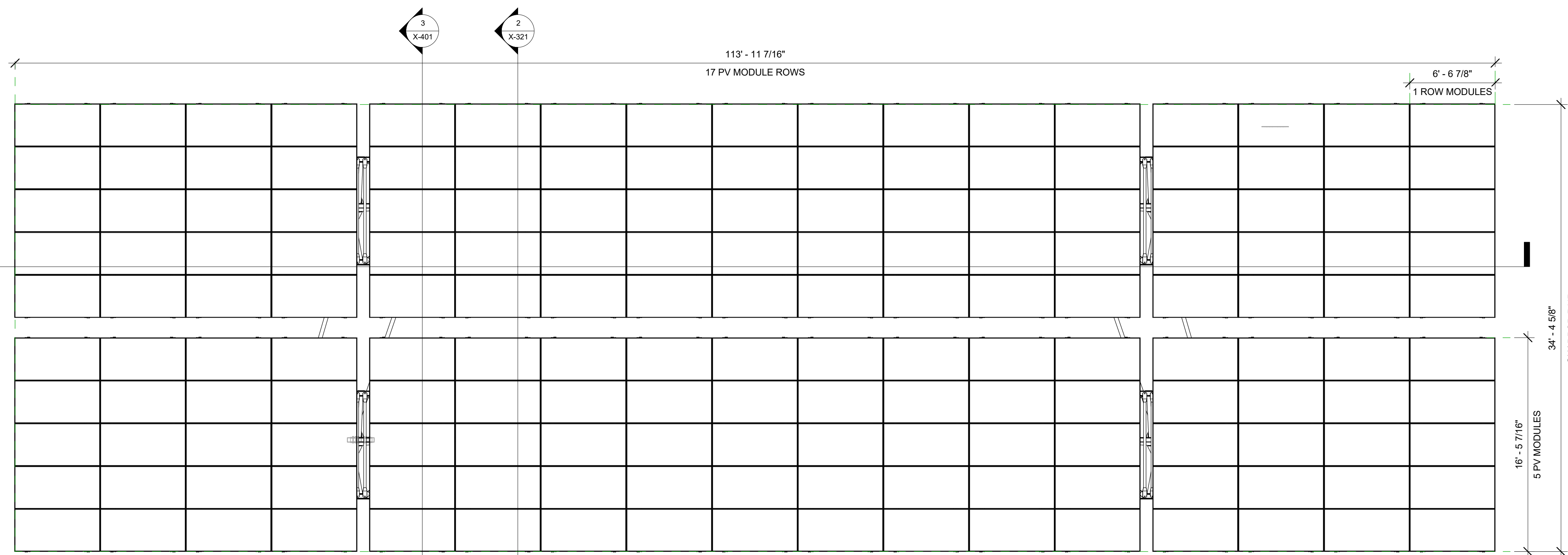


SEALS

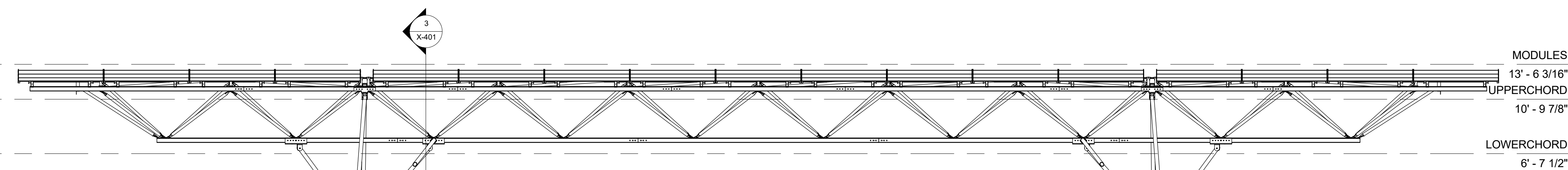
**CONFIG 01 - TRUSS LEVEL PLANS**

PROJECT NUMBER **J007**  
DATE **03/31/2017**  
DRAWN BY **JD** (CHECKED BY **WA**)

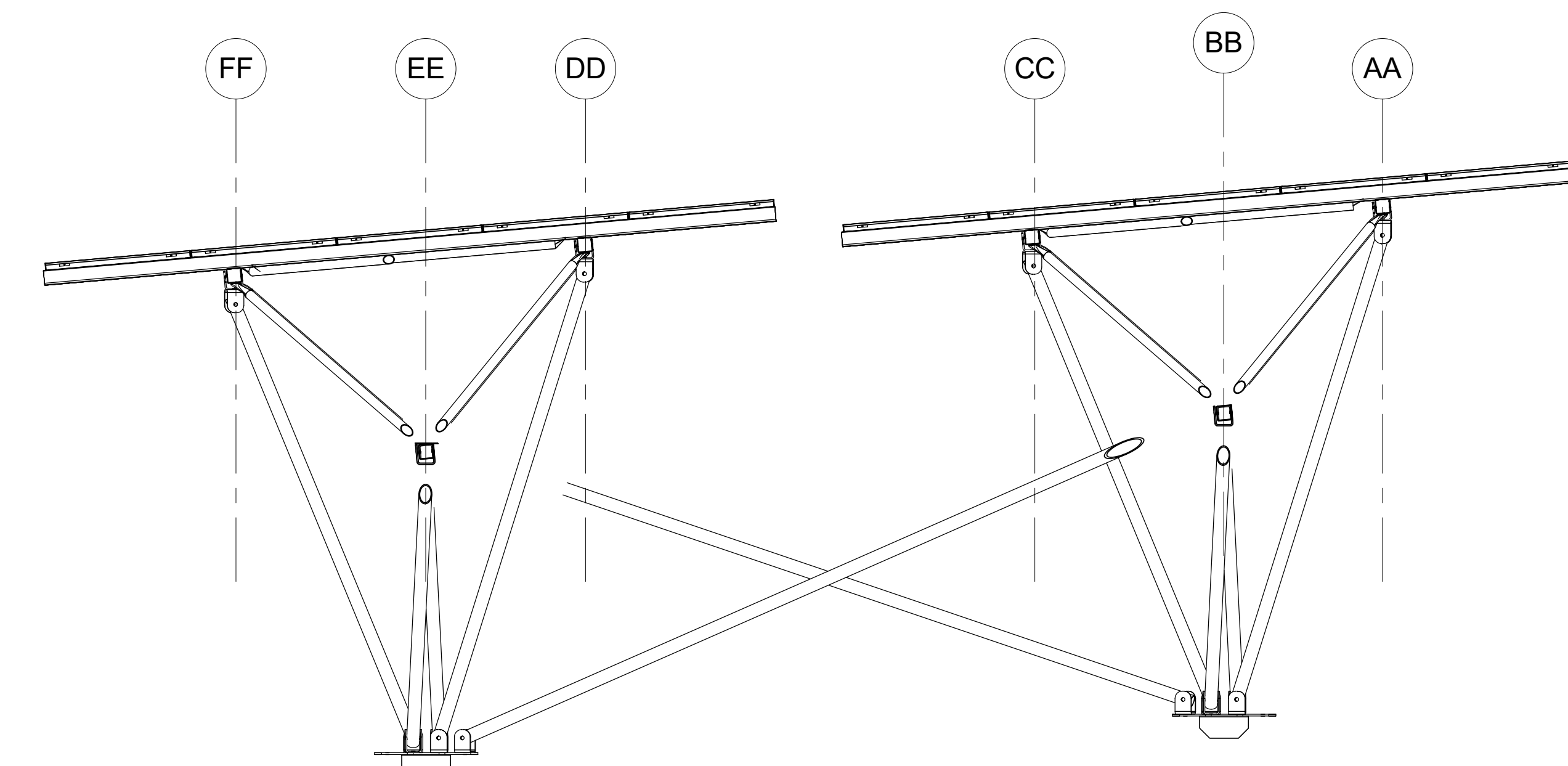
**X-401**



**1 UPPERCHORD**  
3/16" = 1'-0"



**2 LONG SYSTEM SECTION**  
3/16" = 1'-0"



**3 ENLARGED SECTION - CONFIGURATION 1**  
3/8" = 1'-0"

ITEM	PART NUMBER	DESCRIPTION	QTY
1	UC_J00701	UpperChord Type A	28
2	UC_J00702	UpperChord Type B	28
3	UC_J00703	UpperChord Type C	28
4	UC_J00704	UpperChord Type D	14
5	LC_J00705	LowerChord Type E	14
6	LC_J00706	LowerChord Type F	14
7	LC_J00707	LowerChord Type G	7
8	GS_J00701	GroundStrut 01	6
9	GS_J00702	GroundStrut 02	6
10	GS_J00703	GroundStrut 03	6
11	GS_J00704	GroundStrut 04	6
16	IS_J00701	Closed Chord Inner Splice	112
17	UCWS_001	UpperChord Wedge Splice	28
18	LCWS_001	LowerChord Wedge Splice	28
19	MP5_J00701	Z-purfin 5 panel	204
20	MP4_J00702	Z-purfin 4 panel	34
21	PC_J00701	Pier Cap_Left	7
22	PC_J00702	Pier Cap_Right	7
23	CL_0375_3.5	Clevis 3.5"	140
24	ST-D01	Diagonal Strut	98
25	ST-T02	Transverse Strut	91
33	CB_001	Cantilever Brace	14
34	IB_SunTP_001	Inverter Bracket	14

35	IB_SunTP_002	Inverter Strap	14
36	IB_SunTP_003	Inverter Strap	7
72	ST_W01	Web Strut	210
74	GS_J00705	GroundStrut 05	6
75	GS_J00706	GroundStrut 06	6
76	GS_J00707	GroundStrut 07	6
77	GS_J00708	GroundStrut 08	6
78	GS_J00709	GroundStrut 09	2
79	GS_J00710	GroundStrut 10	3
80	GS_J00711	GroundStrut 11	2
81	GS_J00712	GroundStrut 12	3
82	GS_J00723	GroundStrut 23	1
83	GS_J00724	GroundStrut 24	1
84	GS_J00713	GroundStrut 13	1
85	GS_J00714	GroundStrut 14	1
86	GS_J00715	GroundStrut 15	1
87	GS_J00716	GroundStrut 16	1
88	GS_J00717	GroundStrut 17	1
89	GS_J00718	GroundStrut 18	1
90	GS_J00719	GroundStrut 19	1
91	GS_J00720	GroundStrut 20	1
92	GS_J00721	GroundStrut 21	1
93	GS_J00722	GroundStrut 22	1
94	ST_W02	Webstrut Reinforced	84