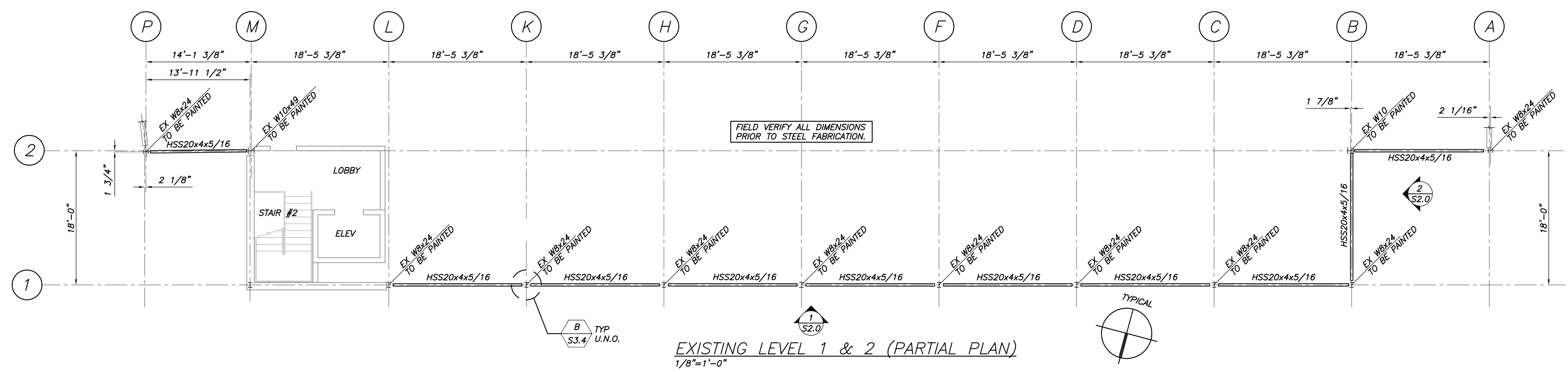


EXISTING CANAL PLAZA ELEVATION
1/8"=1'-0"

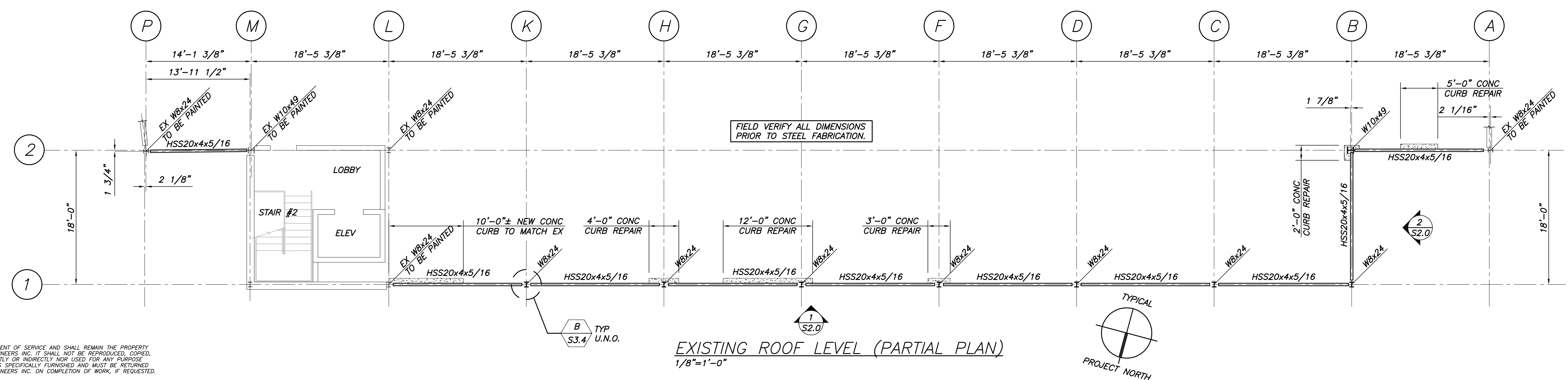
SCOPE OF WORK - PHASE 10

1	CIP CURB REPAIR	38	LF
2	HSS20x4x5/16 BUMPER TUBE	30	EA
3	WB COLUMN EXTENSIONS	8	EA
4	CABLE GUARDRAIL	2,200	LF

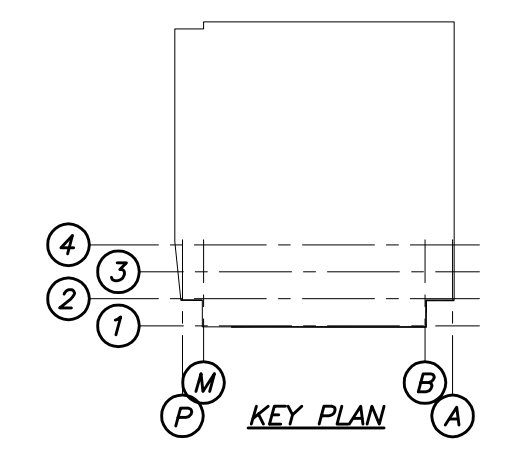
EXISTING PARTIAL WEST ELEVATION @ LINE B
1/8"=1'-0"



EXISTING LEVEL 1 & 2 (PARTIAL PLAN)
1/8"=1'-0"



EXISTING ROOF LEVEL (PARTIAL PLAN)
1/8"=1'-0"



BECKER
STRUCTURAL ENGINEERS
75 New Street, Portland, Maine 04101
207.875.8538 • beckerstructural.com

STATE OF MAINE
TODD M. NEAL
NO. 9406
LICENSED PROFESSIONAL ENGINEER

Approved For:

Issued For: ISSUED FOR PRICING
10/26/16
ISSUED FOR PERMIT
12/12/16

Date:

Rev. No:

FORE STREET PARKING FACILITY
PORTLAND, MAINE
PHASE 10
FRAMING PLANS & ELEVATION

Designed: JMM AS NOTED
Scale:
Drawn: RJB Date: 10/26/16
Checked: JMM Becker Job Number: 3904

S2.0

THIS DRAWING IS AN INSTRUMENT OF SERVICE AND SHALL REMAIN THE PROPERTY OF BECKER STRUCTURAL ENGINEERS INC. IT SHALL NOT BE REPRODUCED, COPIED, LENT OR DISPOSED OF DIRECTLY OR INDIRECTLY, NOR USED FOR ANY PURPOSE OTHER THAN FOR WHICH IT IS SPECIFICALLY FURNISHED AND MUST BE RETURNED TO BECKER STRUCTURAL ENGINEERS INC. ON COMPLETION OF WORK, IF REQUESTED.