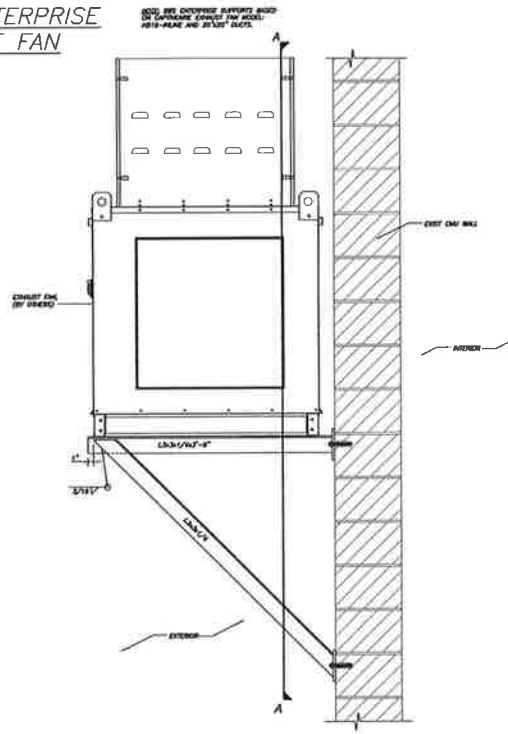
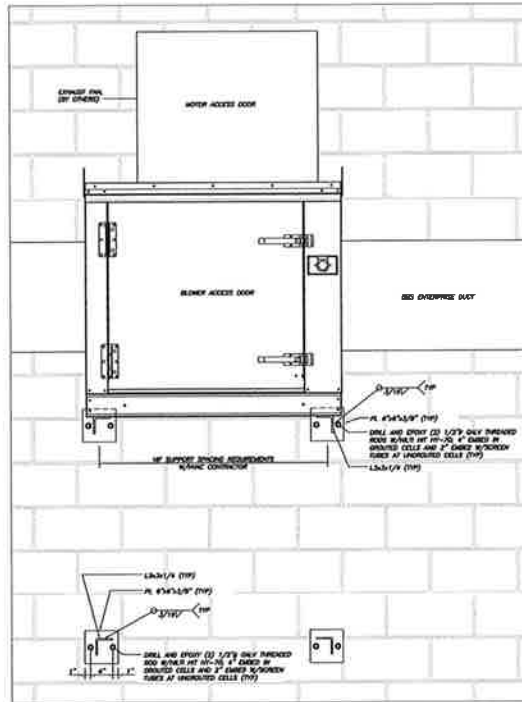


BBS ENTERPRISE EXHAUST FAN



SECTION
1 1/2" x 1" x 1"

1. PAINT PRIME AND PAINT ALL STEEL.
2. PRIME AND FIELD PAINT ALL FIELD WELDED CONNECTIONS.
3. ATTACHMENT OF DUCT AND EXHAUST FAN TO WALL SUPPORTS BY OTHERS.
4. EXHAUST FAN, SUPPLIER TO EXHAUST FAN UNIT SHALL ATTACHMENT CHASING WITH CHANGE ORDER.



SECTION A-A

BY OTHERS AND APPROVED BY THE ARCHITECT. THE ARCHITECT SHALL BE RESPONSIBLE FOR THE PROVISION OF ALL INFORMATION NECESSARY FOR THE FABRICATION AND INSTALLATION OF THE EXHAUST FAN UNIT.



1	REVISION
2	REVISION
3	REVISION
4	REVISION

EXHAUST FAN/DUCT SUPPORT
FORE ST PARKING GARAGE
SUPPORT ELEVATIONS

DATE	2/14/14
BY	BE

S4