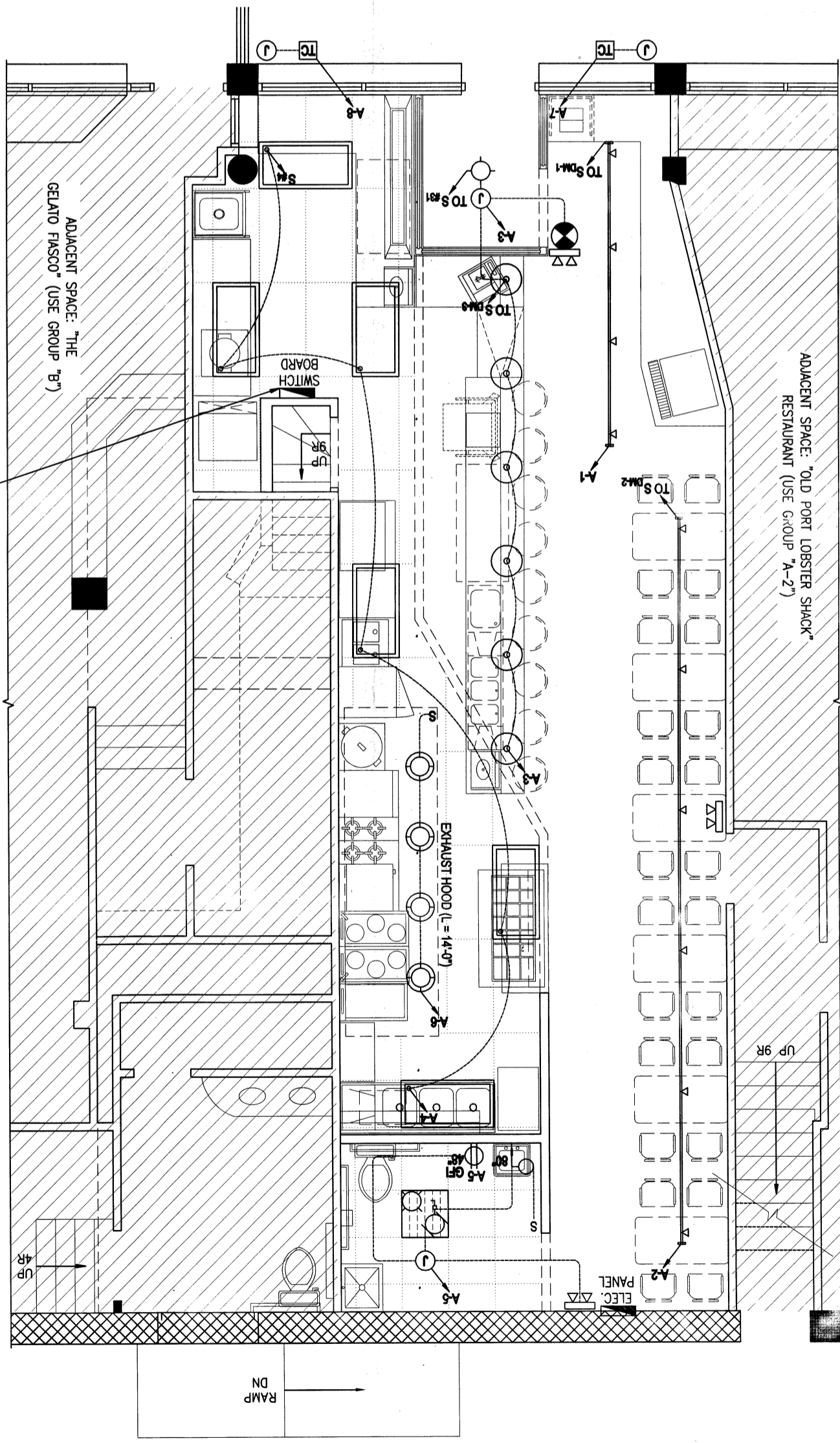


VA	TRIP	DESCRIPTION	WIRE TYPE
100	20/12	DINING AREA TRACK LIGHT (L=13')	12 20/1 150
140	20/12	RESTROOM / OWNER / BAR LIGHTING	12 20/1 672
900	20/12	RESTROOM LIGHT & FAN, GR REC.	12 20/1 120
1200	20/12	FRONT SIGN OUTLET	12 20/1 200
1600	20/12	UNDERCOUNTER DISHWASHER	12 20/1 400
1600	20/12	ICE MAKER	12 20/1 500
1600	20/12	UNDERCOUNTER REF (UNDER SINK CASE)	12 20/1 400
1600	20/12	KITCHEN REC.	12 20/1 500
1200	20/12	DINING AREA REC.	12 20/1 500
600	20/12	SINK TABLE REC.	12 20/1 1000
400	20/12	SINK WINDOW REC.	12 20/1 400
9	10	SINK SPS (GROUP-N)	12 20/1 400
13	14	SUSHI DISPLAY CASE	12 20/1 500
15	16	KITCHEN REC.	12 20/1 400
17	18	UNDERCOUNTER DISHWASHER	12 20/1 400
19	20	UNDER BAR COUNTER REFRIGERATOR	12 20/1 650
21	22	BAR COUNTER REC.	12 20/1 600
23	24	DIRECT DRINK BEER REF.	12 20/1 900
25	26	ICE CREAM SORT SERVE FREEZER	8 45/9 9050
27	28	PROOFER	29 20
29	30	KITCHEN EXHAUST FAN	1000 20/12
31	32	SPACE	10 30/9 6,050
33	34	(E1-K1) ROOFTOP	---
35	36	(E1-K1) ROOFTOP	---
37	38	KITCHEN MAKE-UP FAN	14,500 45/7 8
39	40	(SF-K1 ABOVE CEILING)	12 20/9 2,400
41	42	HVAC UNIT GR REC.	1000 20/12
TOTAL LOAD = 64,912 VA = 180 A @ 208V / 3Ø 4W			
26,492			

CEILING - ELECTRICAL PLAN

SCALE: 3/16" = 1'-0"

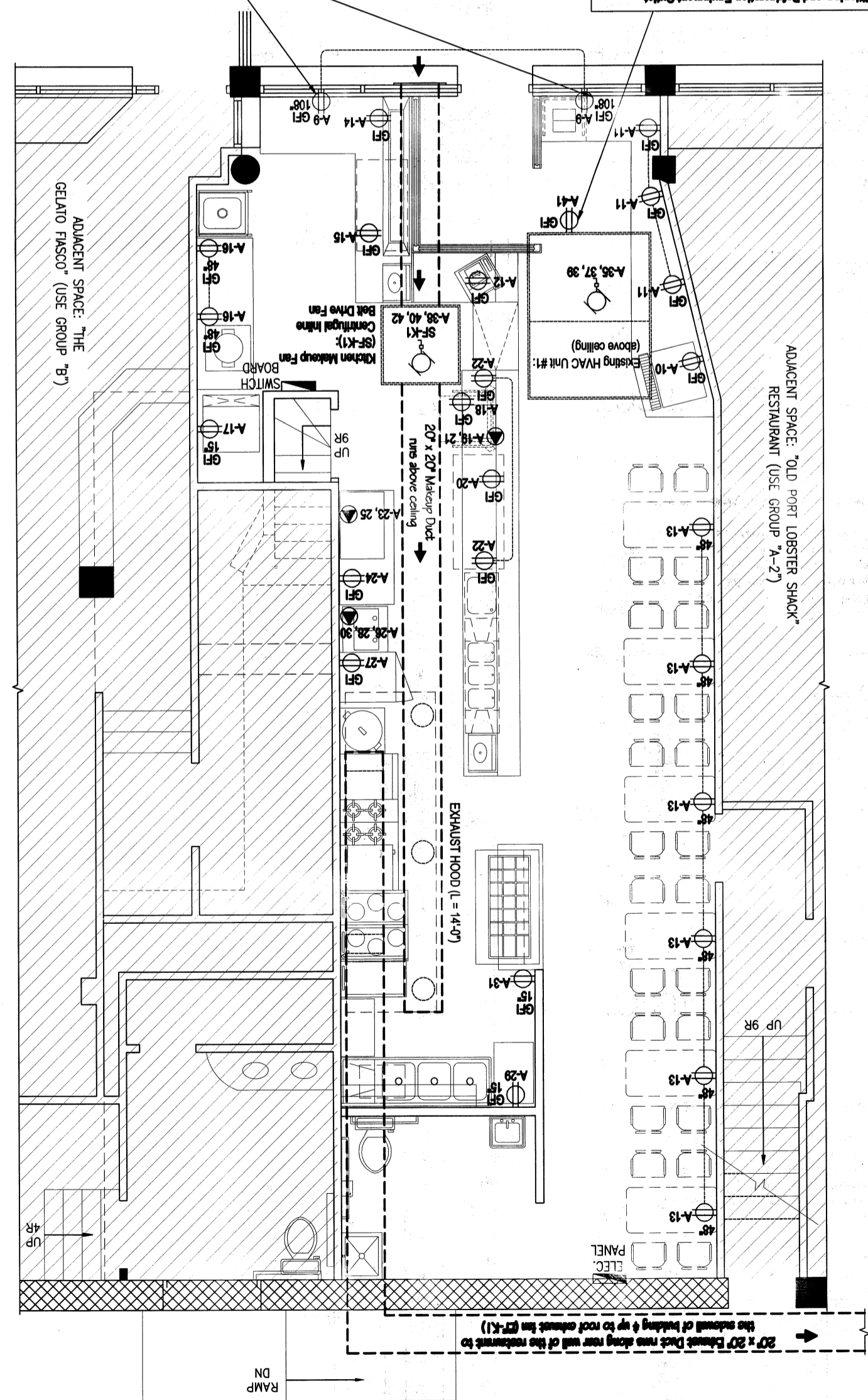


TOTAL LOAD: 64,912 VA
= 180 AMPS. @ 208V. / 3Ø 4W
CAPACITY OF SPACE: 400 AMP/RES

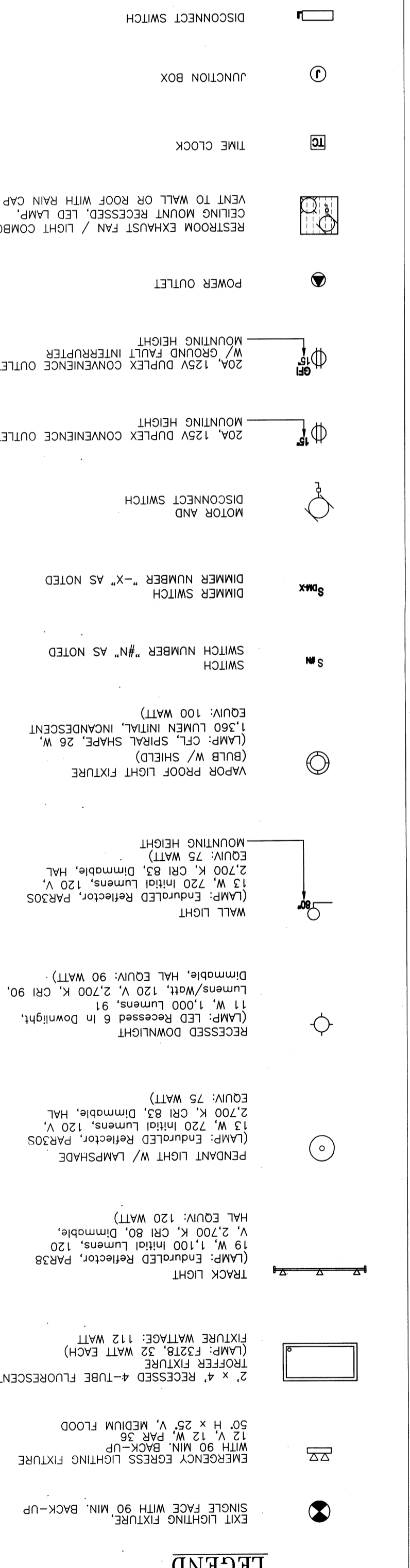
SIZE	ALLOWABLE AMPLTY OF INSULATED COPPER CONDUCTOR
1/2"	15
3/8"	20
1/4"	25
3/16"	30
5/16"	35
1/8"	40
3/16"	45
1/4"	50
3/16"	55
1/4"	60
3/16"	65
1/4"	70
3/16"	75
1/4"	80
3/16"	85
1/4"	90
3/16"	95
1/4"	100
3/16"	105
1/4"	110
3/16"	115
1/4"	120
3/16"	125
1/4"	130
3/16"	135
1/4"	140
3/16"	145
1/4"	150

ELECTRICAL PLAN

SCALE: 3/16" = 1'-0"



1. ALL WIRING TO COMPLY WITH N.E.C. 2014 OR LATEST ADOPTED, AND LOCAL REQUIREMENTS.
2. MINIMUM CIRCUIT TO BE 20 AMP. BREAKER, (2) #12 IN 1/2" CONDUIT (+GND).
3. WIRE SIZES BASED ON THE COPPER, A.W.G.
4. PROVIDE DISCONNECTING MEANS AT ALL MOTOR LOADS.
5. VERIFY ALL REQUIREMENTS FOR KITCHEN EQUIPMENT WITH EQUIPMENT SUPPLIER.
6. MAKE ALL FINAL CONNECTIONS.
7. MOUNT ALL ELECTRICAL DEVICES AND SWITCHES AS REQUIRED BY THE ADA AND THE LOCAL STATE BARBERS FREE RULES.
8. FUSE ALL MOTORS AND MOTOR ASSEMBLIES IN ACCORDANCE WITH THE N.E.C. 2014 AND MANUFACTURER'S RECOMMENDATIONS.
9. BALANCE THE LOADS EVENLY BETWEEN THE PHASES OF THE SYSTEM.
10. MAINTAIN A MAXIMUM VOLTAGE DROP OF 3% THROUGHOUT THE ENTIRE SYSTEM.
11. COORDINATE ALL WORK WITH ARCHITECTURAL, MECHANICAL, AND PLUMBING TRADES IN FIELD.
12. VERIFY ALL EXISTING JOB CONDITIONS AND ACCOMMODATE AS REQUIRED FOR A COMPLETE INSTALLATION.



DWG. NO. ME160408R
A-3
3 OF 5

CEILING - ELECTRICAL PLAN
ELECTRICAL PANEL SCHEDULE

60S FUSION RESTAURANT
425 FORE STREET, STE #400
PORTLAND, MAINE 04101
(IN "FORE STREET GARAGE")

JOHN E. STUMPF P.C.
CONSULTING ARCHITECT
725 FRANKLIN AVE.
GARDEN CITY, NY 11530
TEL: (516) 877-0400
EMAIL: JSR@JOHNSTUMPF.COM

KING'S USA GROUP INC.
112-45 ROOSEVELT AVENUE
QUEENS, NY 11368
TEL: (212) 274-8833
FAX: (212) 274-8889

DATE: 05/09/2016

JOHN E. STUMPF
REGISTERED PROFESSIONAL ARCHITECT
STATE OF MAINE
No. 3849