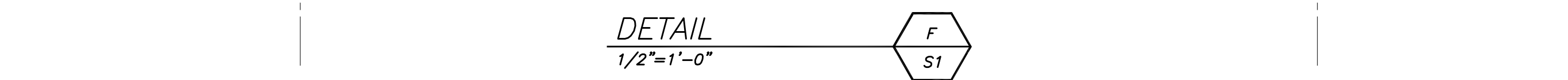
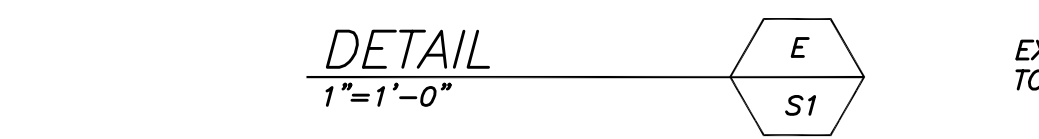
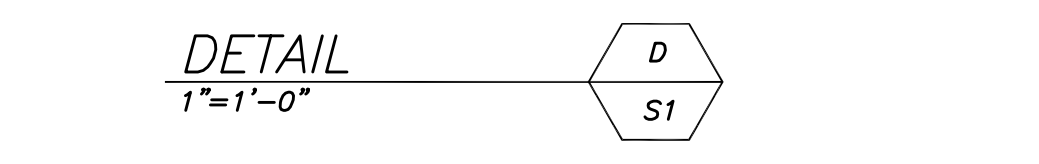
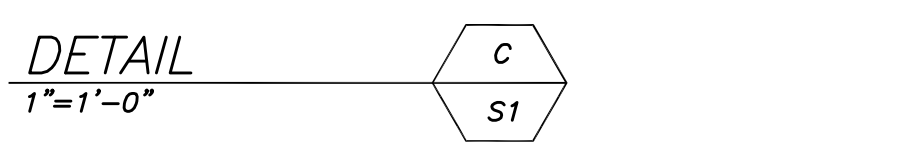
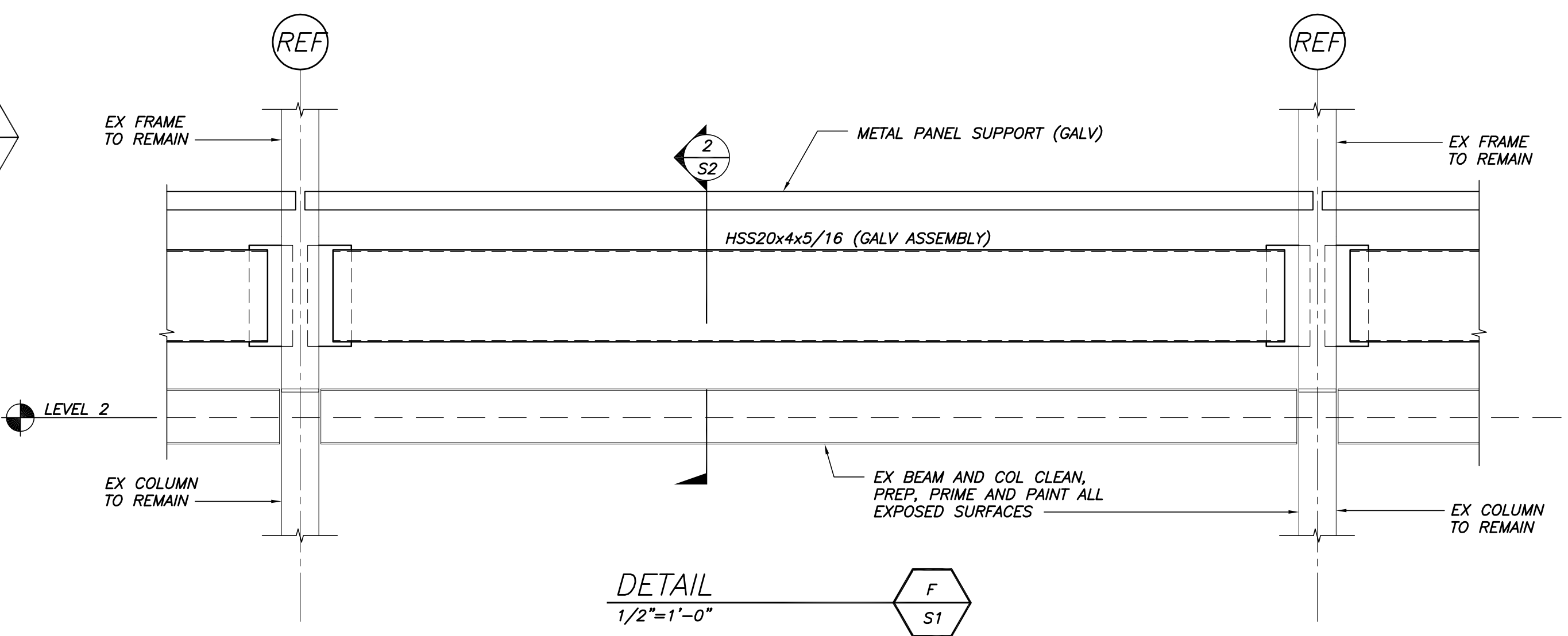
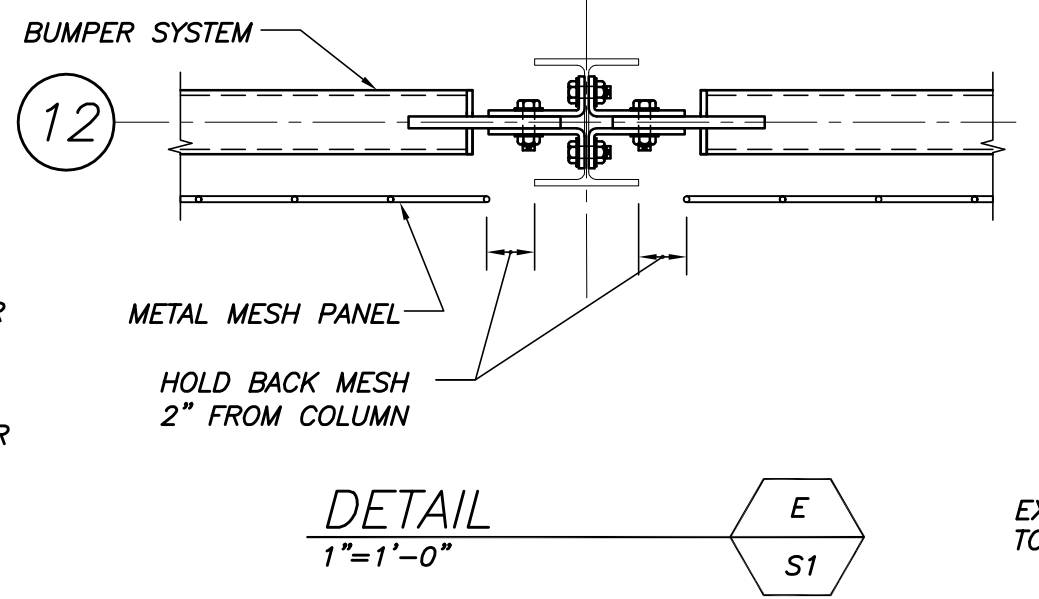
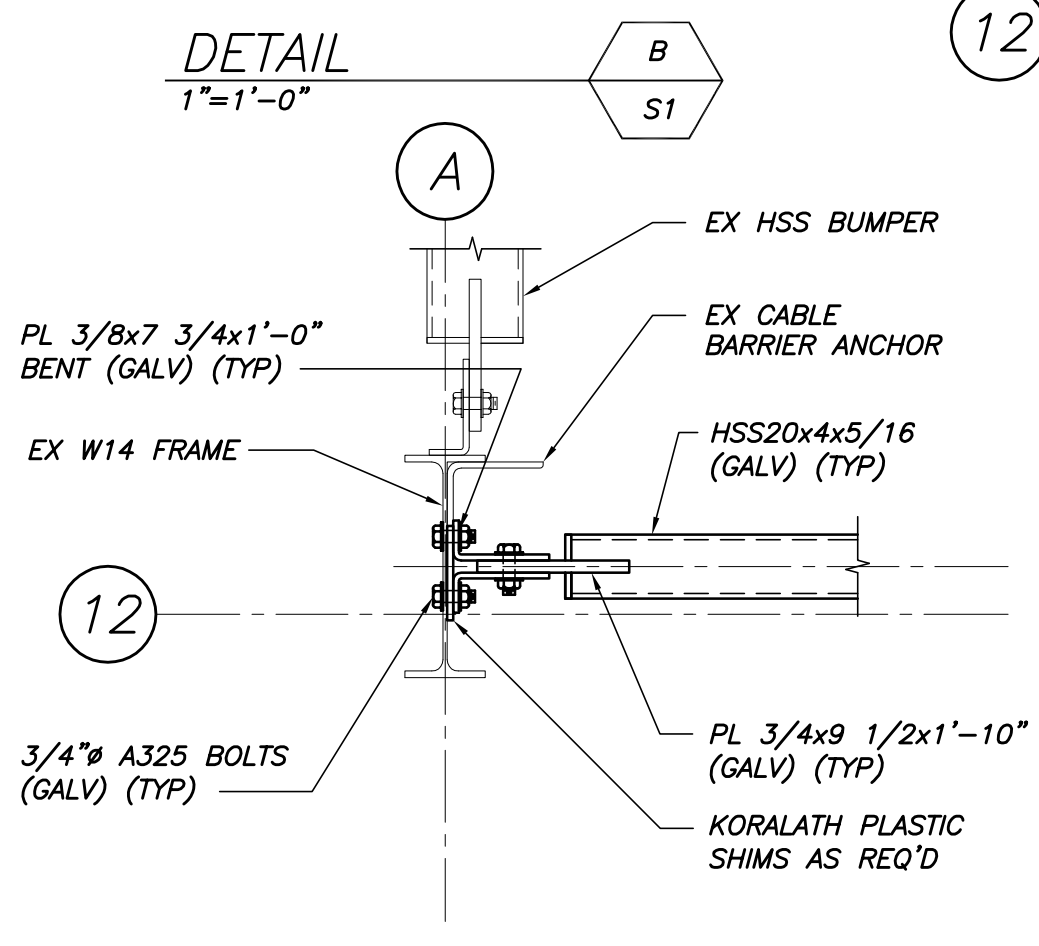
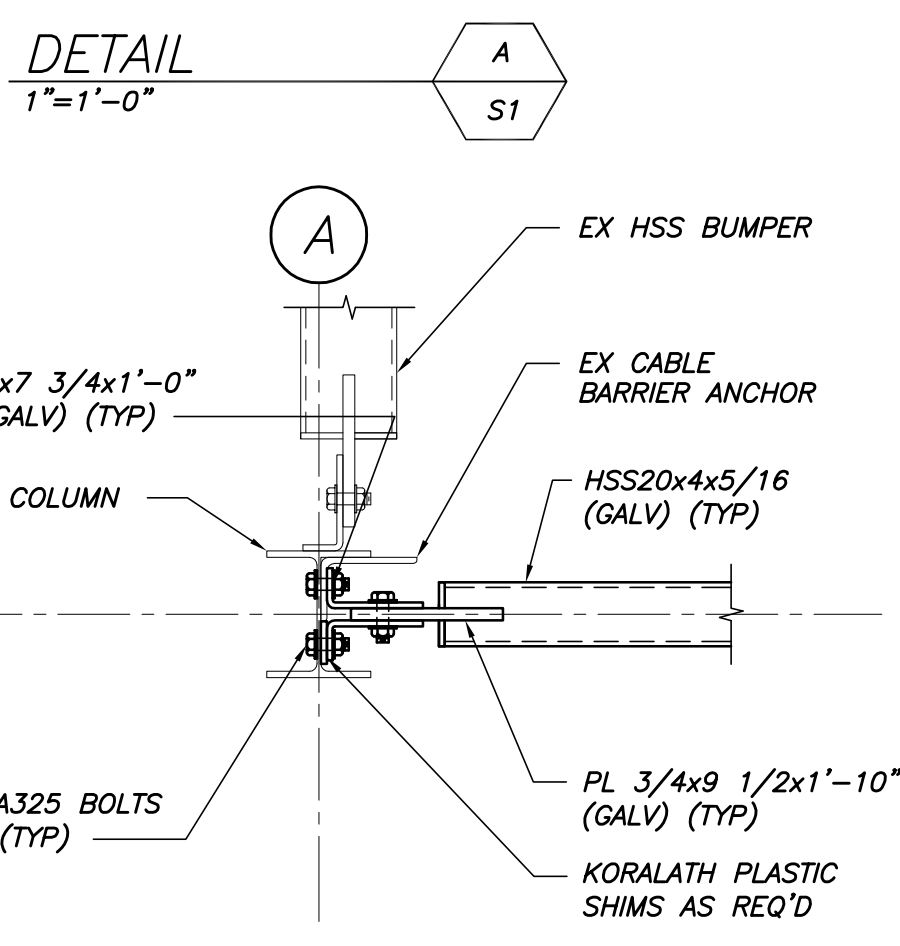
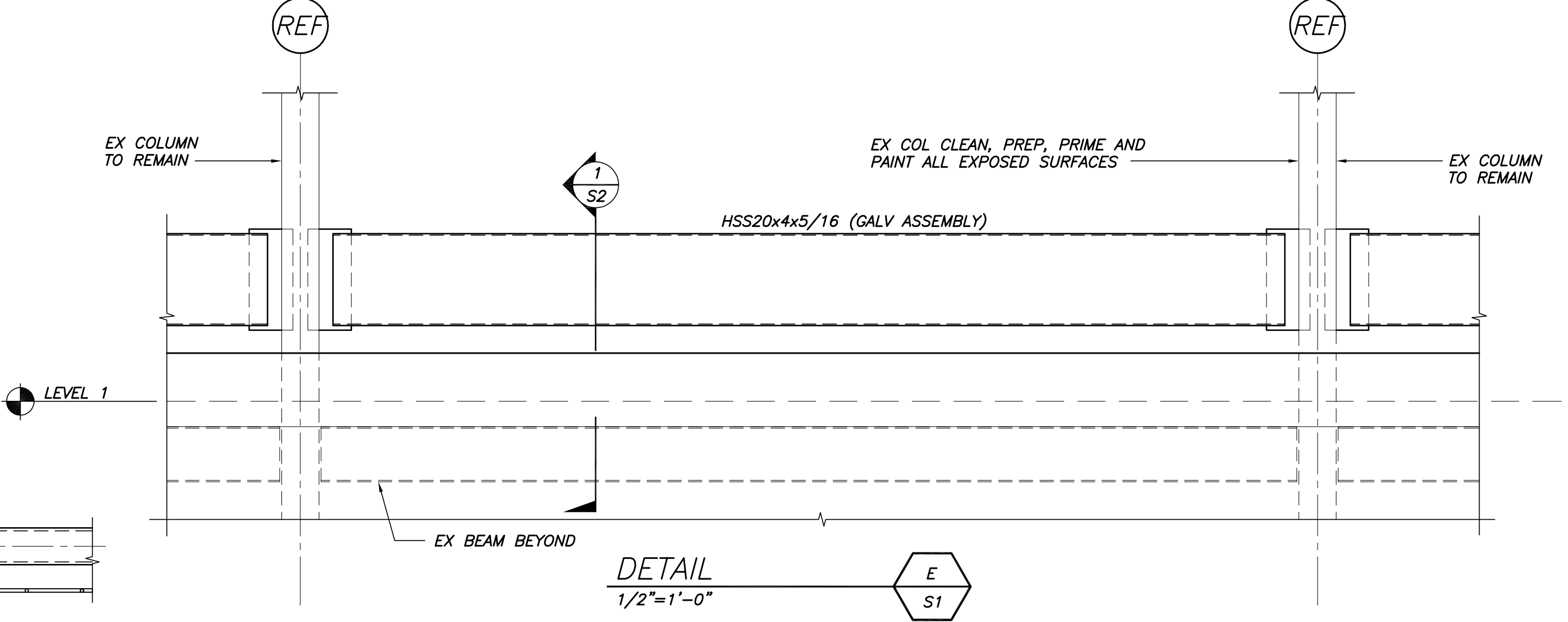
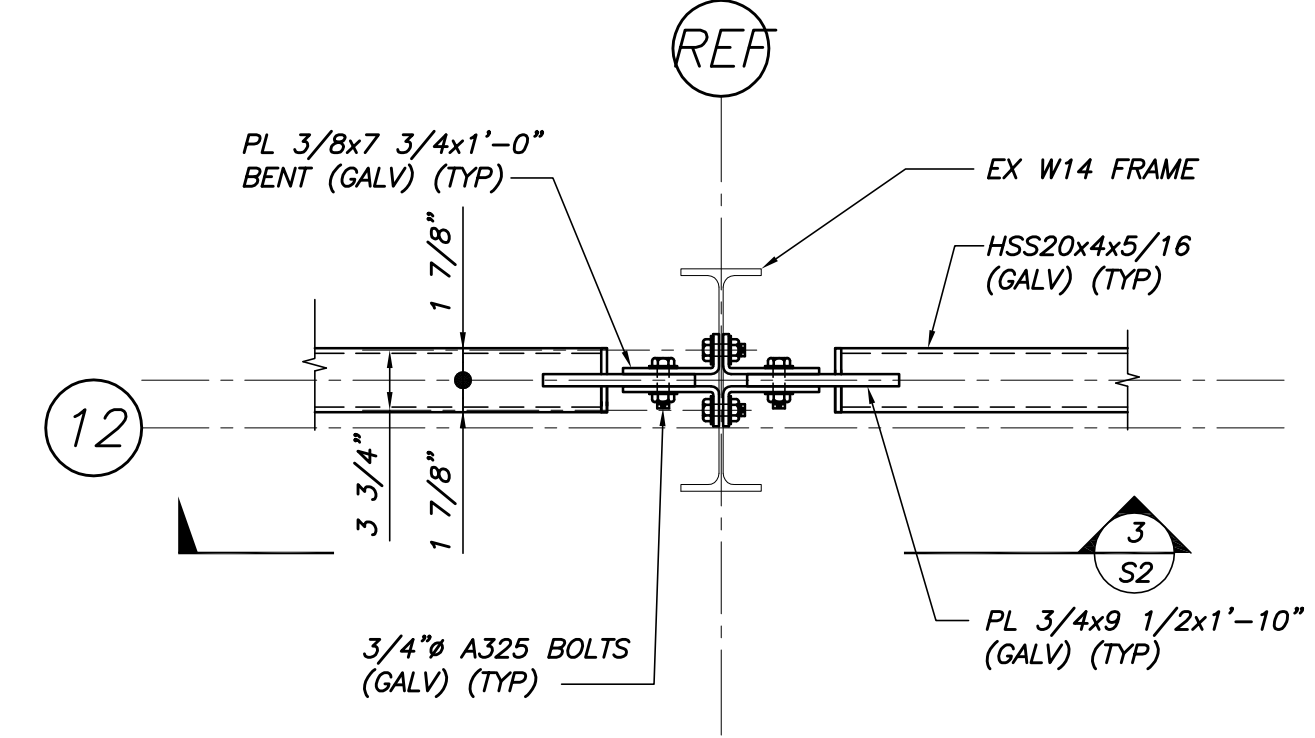
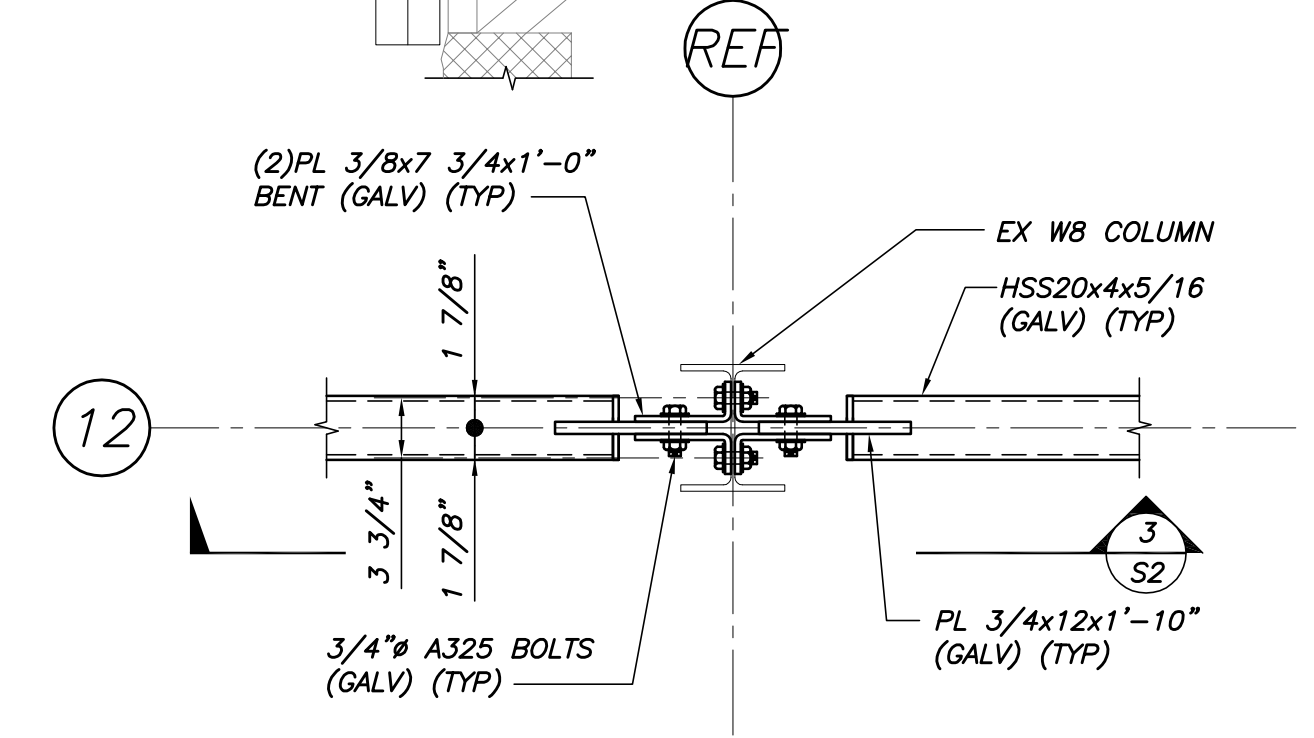
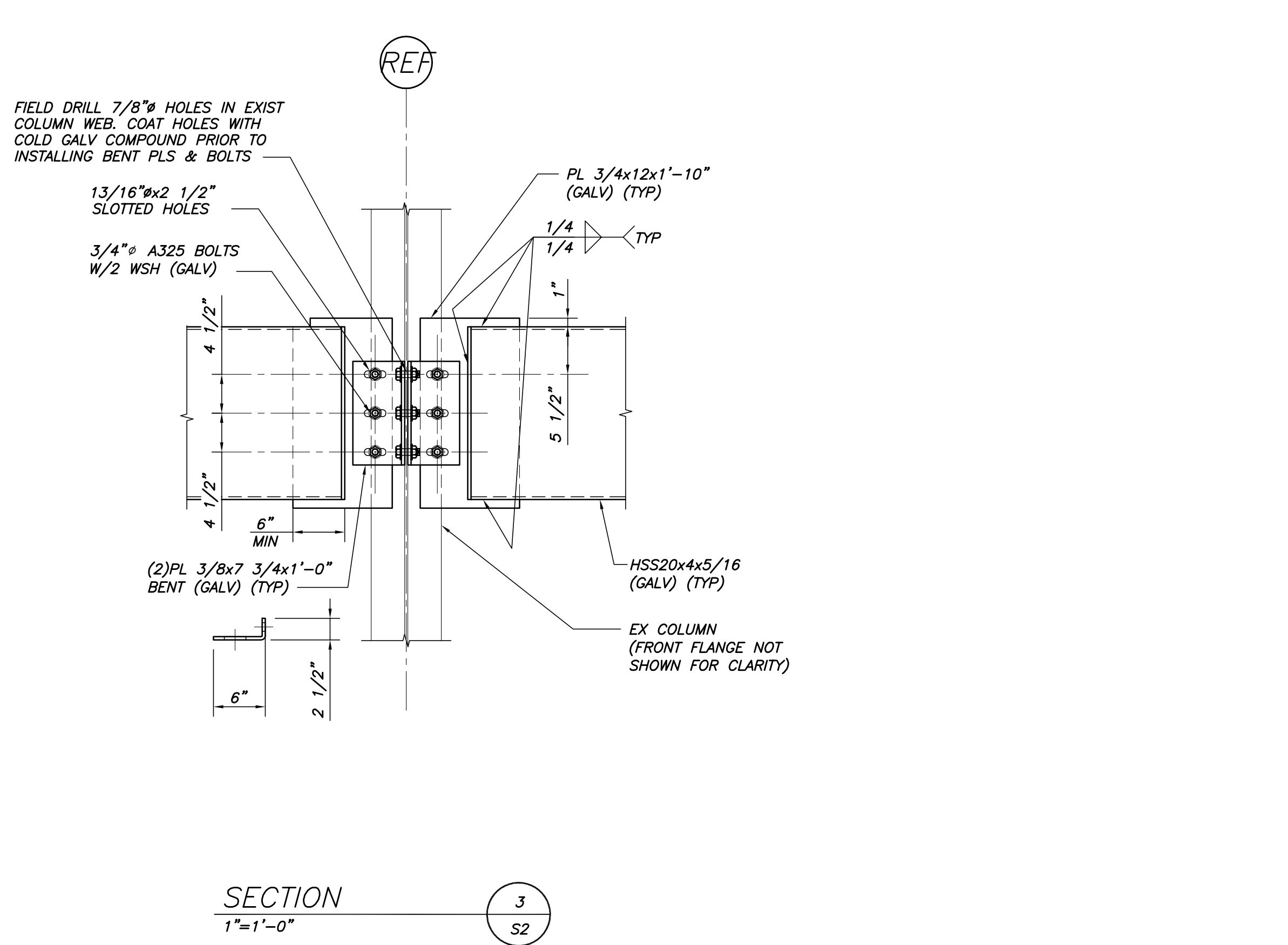
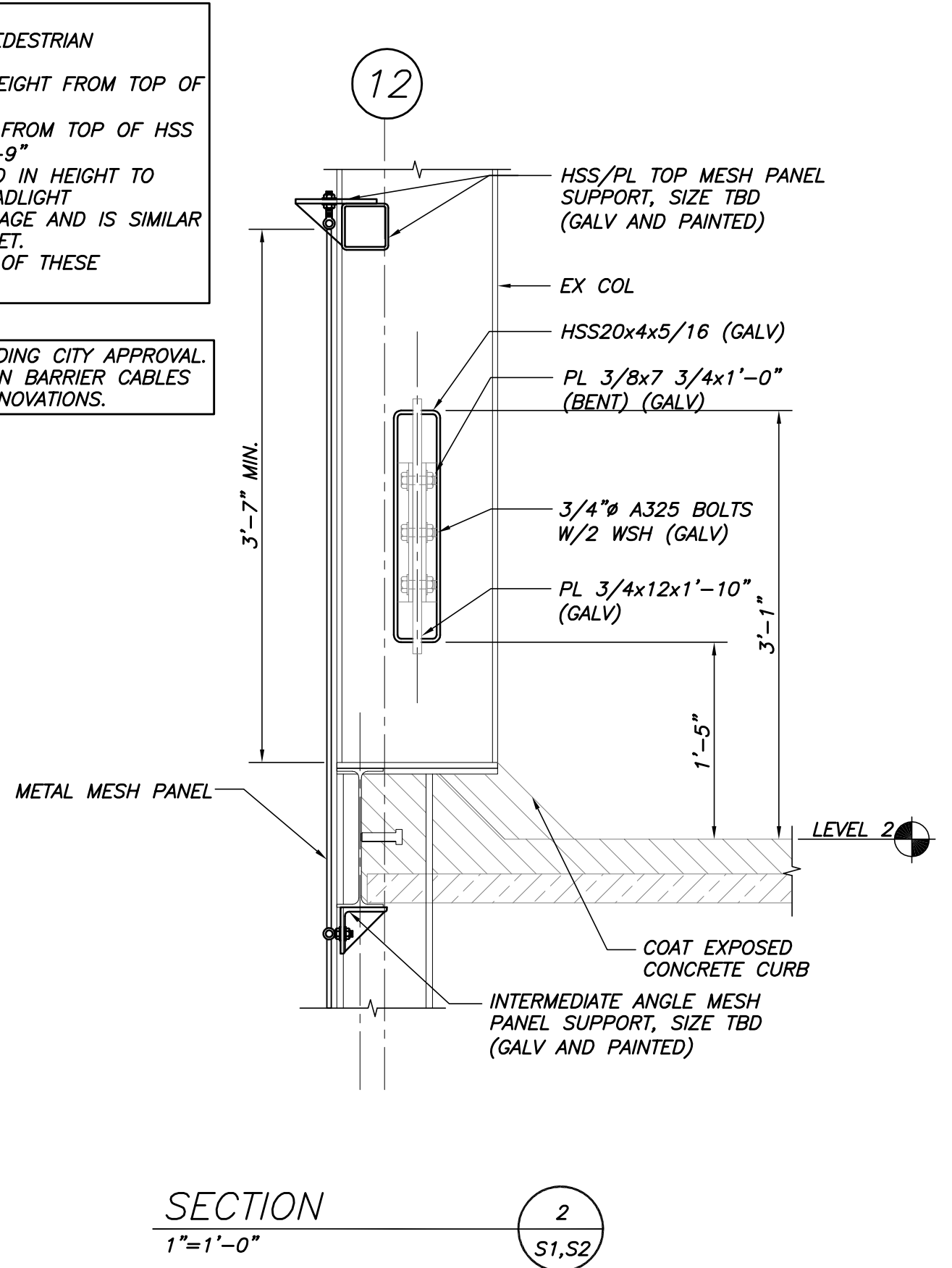
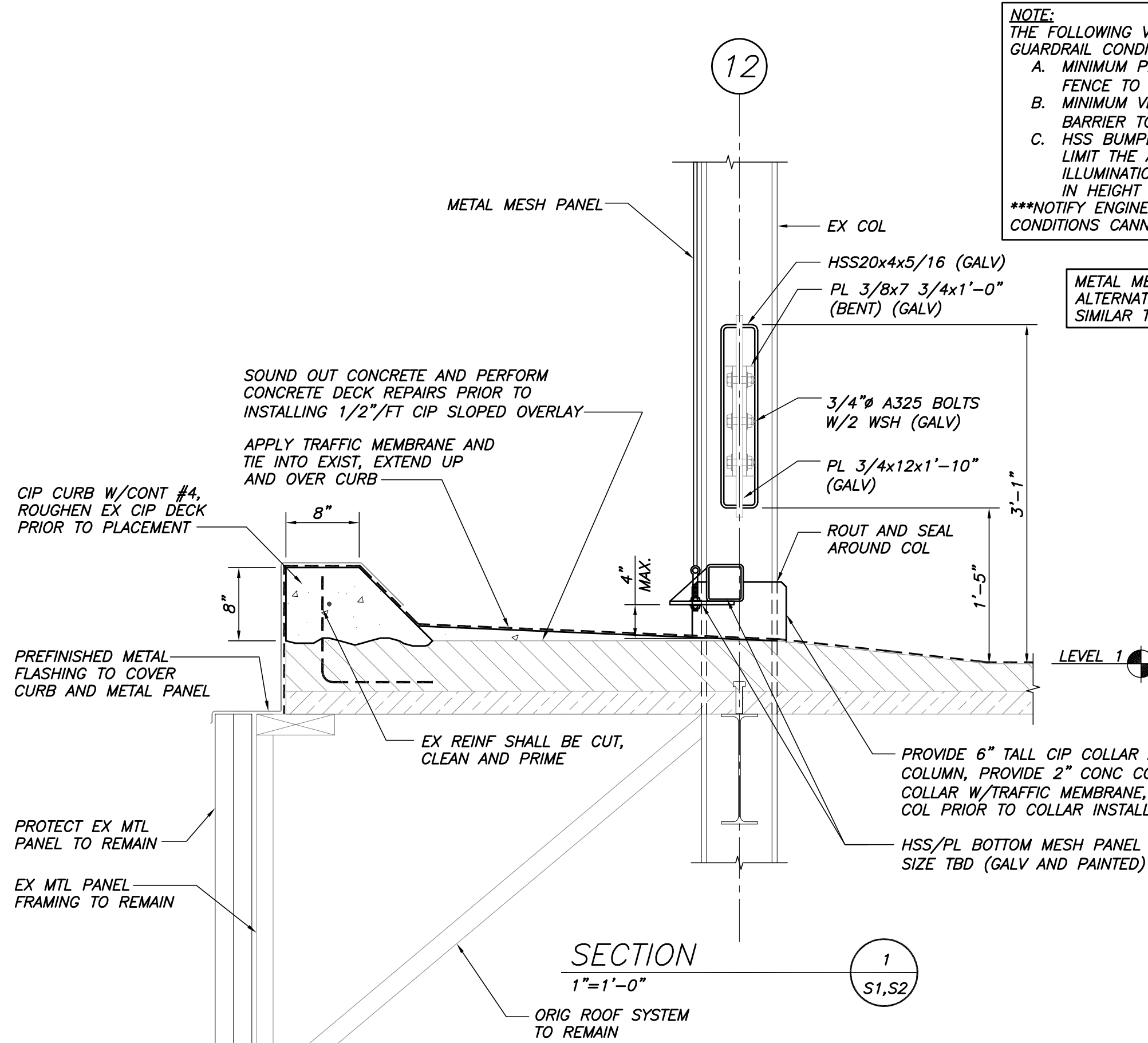
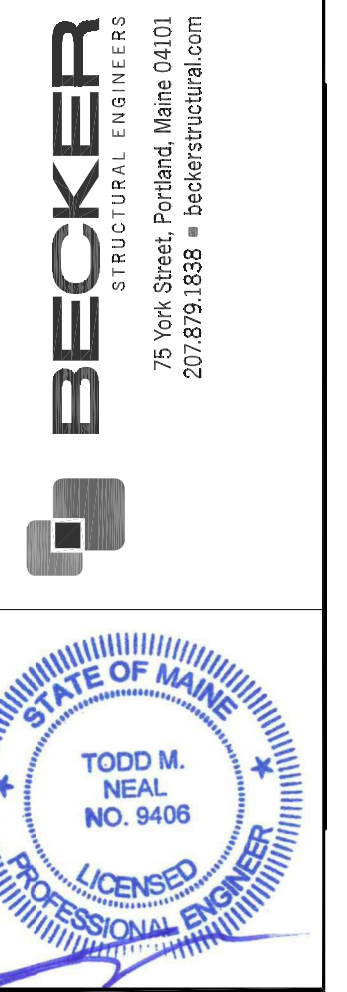


NOTE:
 THE FOLLOWING VEHICLE BARRIER AND PEDESTRIAN GUARDRAIL CONDITIONS MUST BE MET:
 A. MINIMUM PEDESTRIAN GUARDRAIL HEIGHT FROM TOP OF FENCE TO CURB IS 3'-7".
 B. MINIMUM VEHICLE BARRIER HEIGHT FROM TOP OF HSS BARRIER TO DRIVE SURFACE IS 2'-9".
 C. HSS BUMPER HAS BEEN INCREASED IN HEIGHT TO LIMIT THE AMOUNT OF VEHICLE HEADLIGHT ILLUMINATION OUTSIDE OF THE GARAGE AND IS SIMILAR IN HEIGHT TO THE EXISTING PARAPET.
 NOTIFY ENGINEER IMMEDIATELY IF ANY OF THESE CONDITIONS CANNOT BE MET.

METAL MESH PANEL DETAILS PENDING CITY APPROVAL. ALTERNATE: INSTALL POST TENSION BARRIER CABLES SIMILAR TO PREVIOUS FACADE RENOVATIONS.



THIS DRAWING IS AN INSTRUMENT OF SERVICE AND SHALL REMAIN THE PROPERTY OF BECKER STRUCTURAL ENGINEERS INC. IT SHALL NOT BE REPRODUCED, COPIED, LENT OR DISPOSED OF DIRECTLY OR INDIRECTLY, NOR USED FOR ANY PURPOSE OTHER THAN FOR WHICH IT IS SPECIFICALLY FURNISHED AND MUST BE RETURNED TO BECKER STRUCTURAL ENGINEERS INC. ON COMPLETION OF WORK, IF REQUESTED.



Approved For	FOR PERMIT
Date	2/17/16
Rev No	1
Issued For	FOR PERMIT
Date	3/8/16

FORE STREET PARKING FACILITY
 PORTLAND, MAINE
 FORE ST FACADE REPAIRS
 SECTIONS & DETAILS

Designed	JMM	Scale	AS NOTED
Drawn	RJB	Date	3/8/16
Checked	JMM	Becker Job Number	3752

S2