

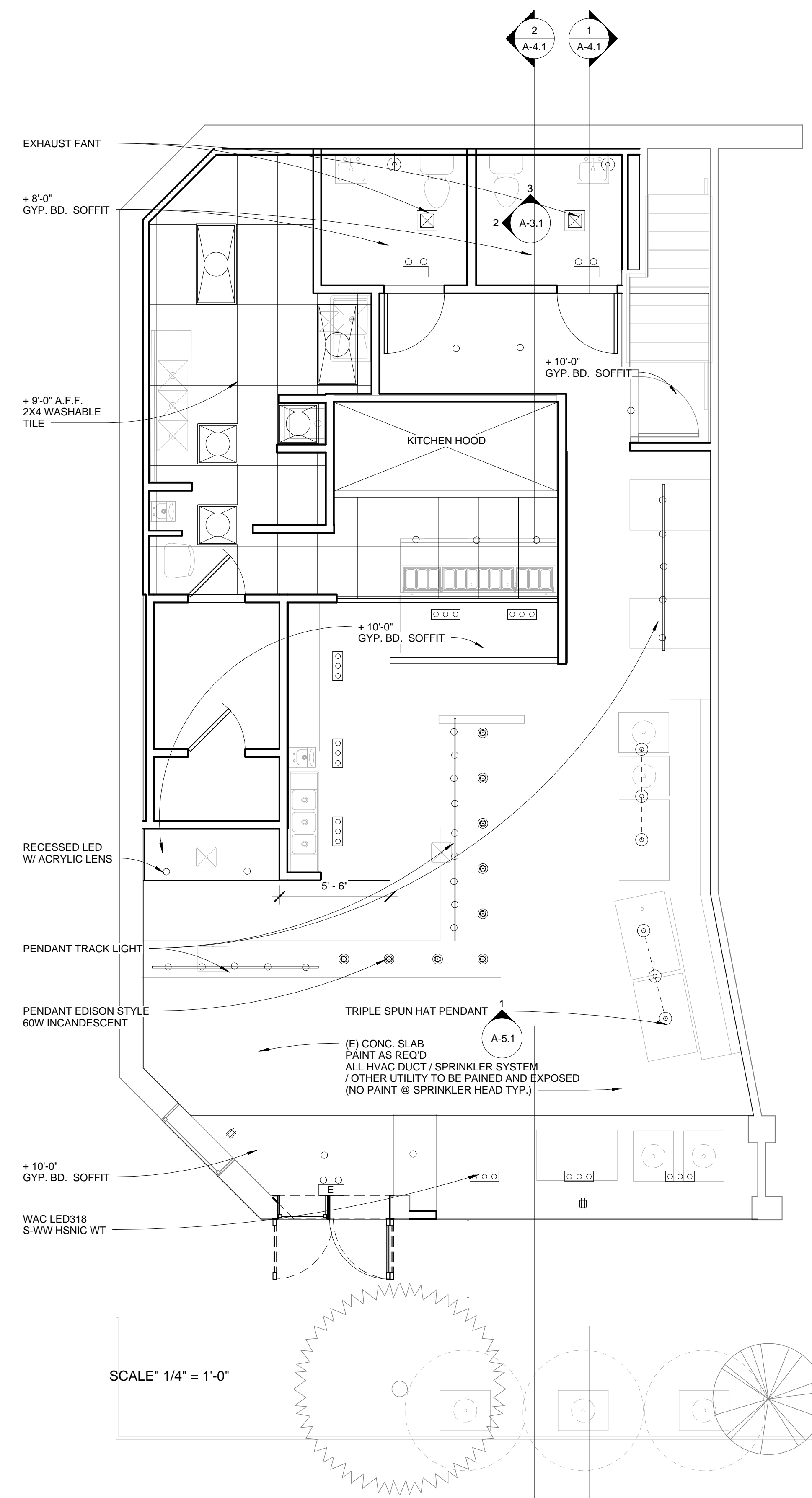


**Tenant Improvement
Old Port Lobster Shack**
425 FORE STREET
PORTLAND, ME

PROJECT NUMBER	150101
DRAWN	Author
CHECKED	Checker
DATE	
SCALE	

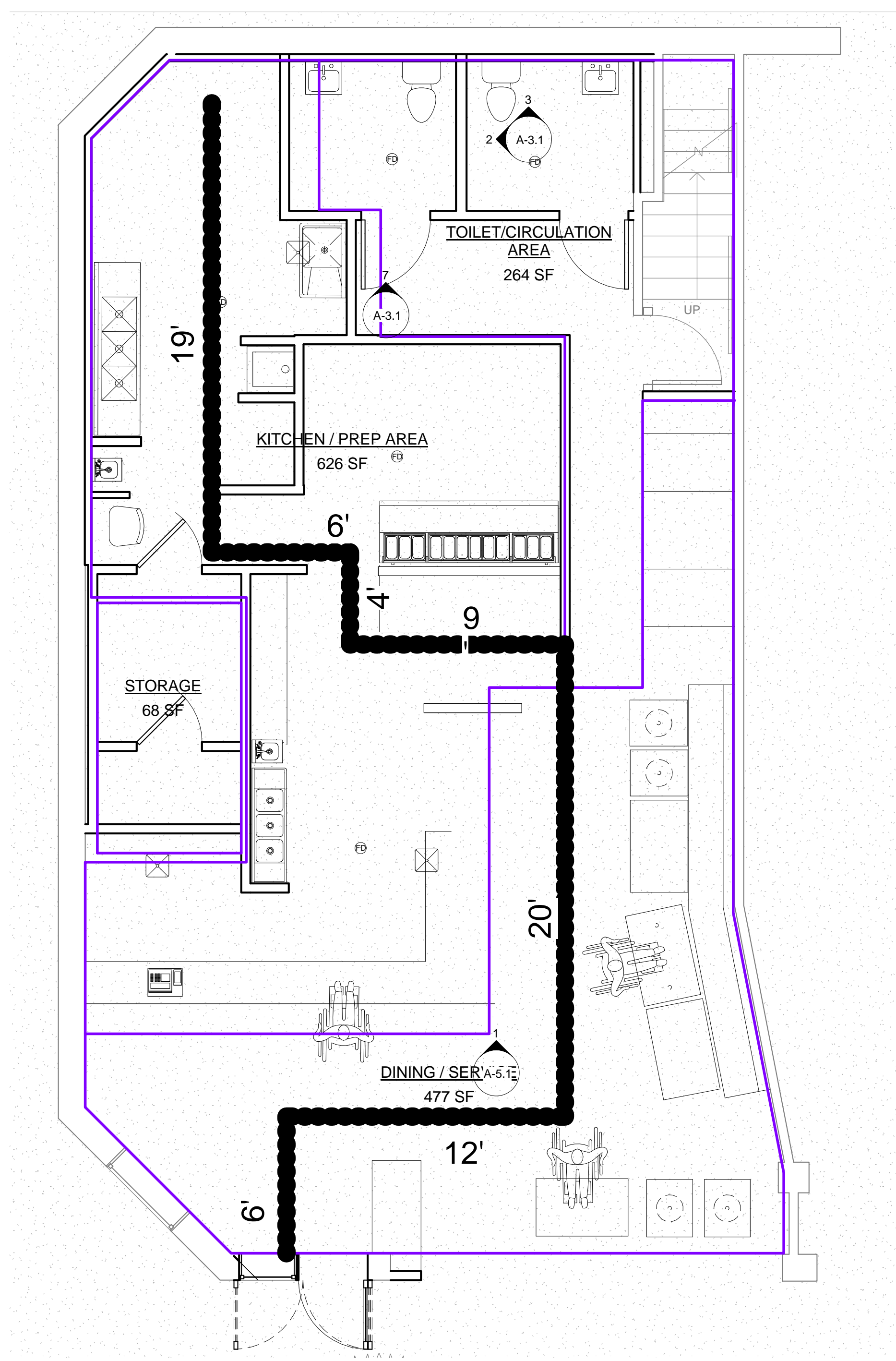
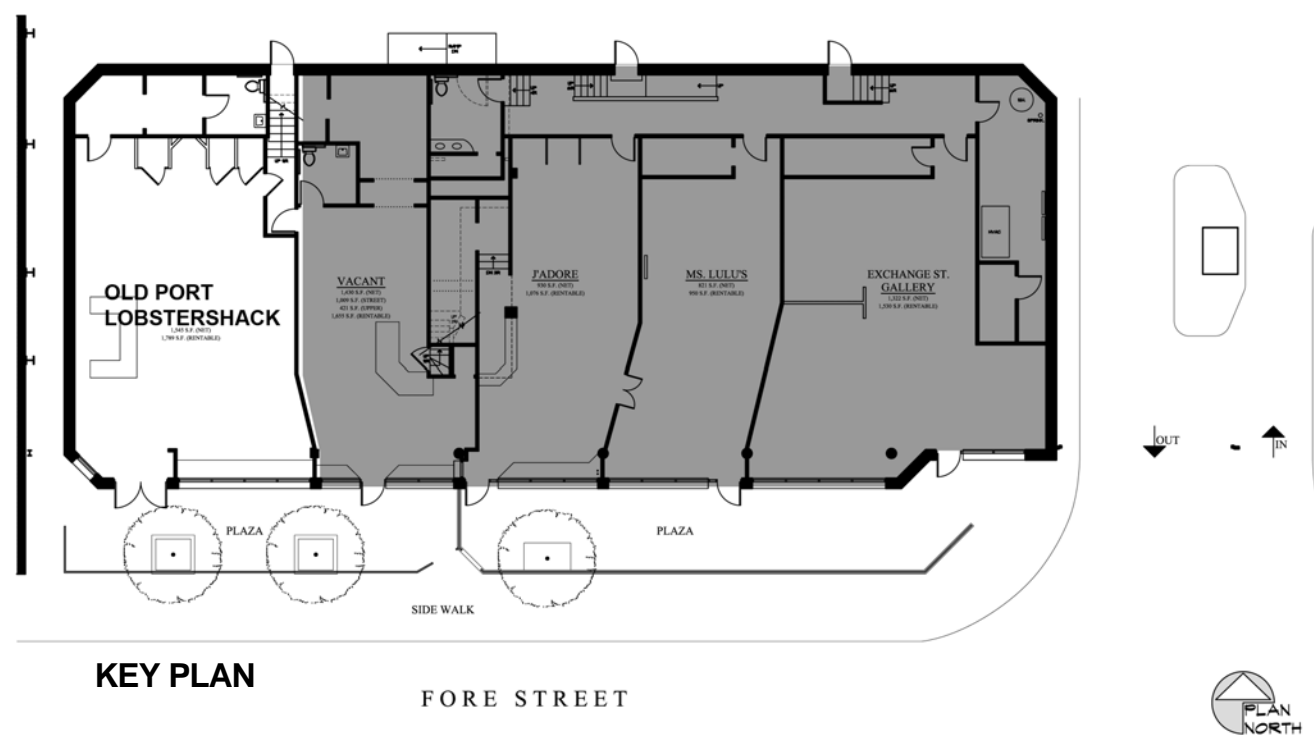
REFLECTED CEIL. PLAN / Area Plan

A-2.2



NOTE: HVAC / SPRINKLER SYSTEM/KITCHEN TYPE I EXHAUST, MAKE-UP SYSTEM TO BE SEPARATE PERMIT BY CERTIFIED ENGINEERS.

2 REFLECTED CEILING PLAN
1/4" = 1'-0"



1 AREA PLAN
1/4" = 1'-0"

(8) SEATS AT COUNTER (1) SEAT PER 18" OVER 13'-0" COUNTER WIDTH)

Area Schedule		
Name	Area	Occupant Load / Comments
DINING / SERVICE	477 SF	477 / 15 @ 32
KITCHEN / PREP AREA	626 SF	626 / 200 @ 4
STORAGE	68 SF	68 / 300 @ 1
TOILET/CIRCULATION AREA	264 SF	264/300 @ 1