

DATE: 11/5/12	SCALE: NOTED	CHECKED BY: TMN	DESIGNED BY: TMN	DRWN BY: TMN	REV. NO: 1	DATE: 1/7/13	DESCRIPTION: PERMIT/PRICING SET
---------------	--------------	-----------------	------------------	--------------	------------	--------------	---------------------------------

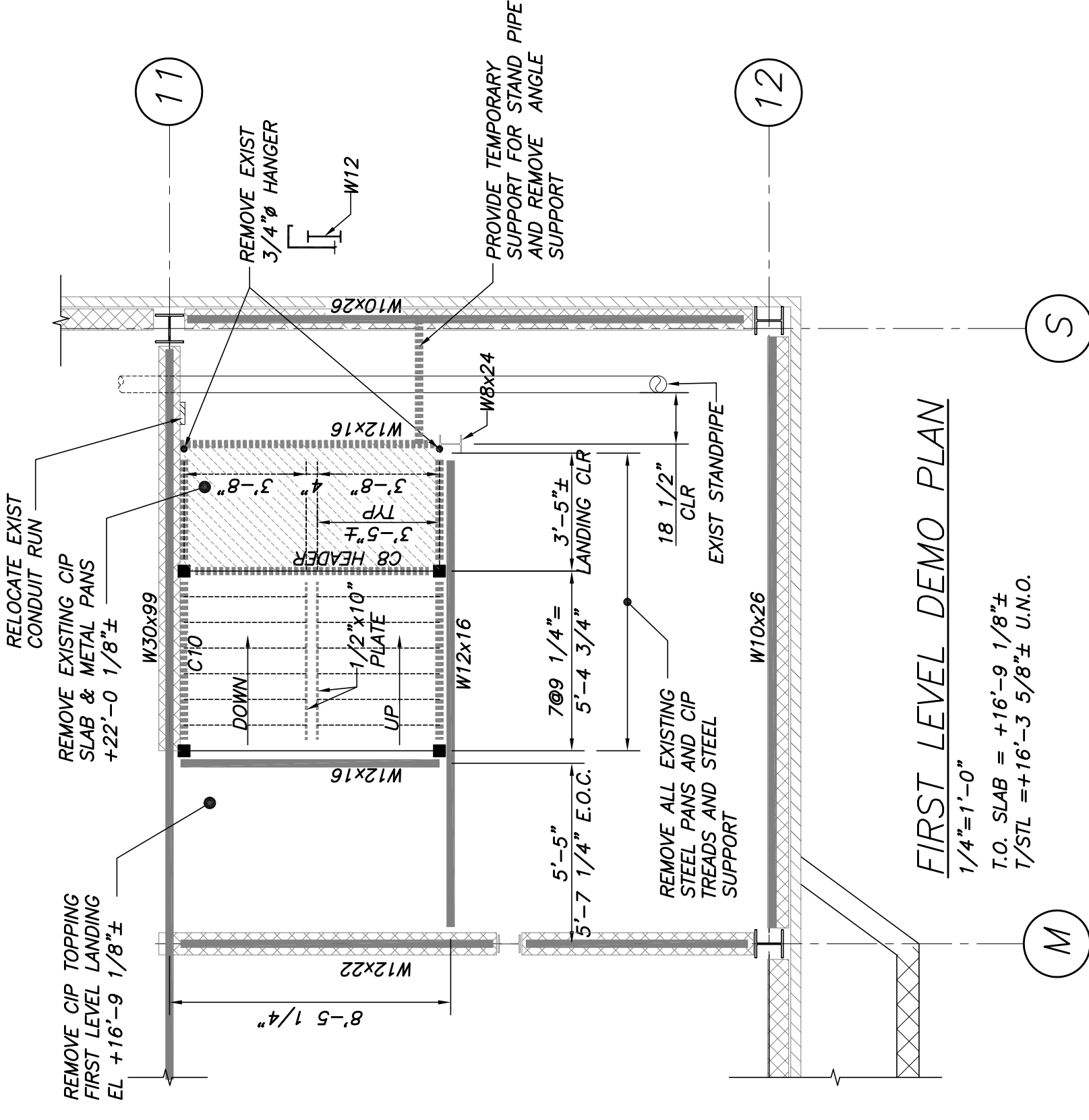
PROJECT: FORE STREET PARKING FACILITY
PORTLAND, MAINE
FORE STREET STAIR REPLACEMENT
DEMOLITION PLANS

DRAWING NO. **D1**

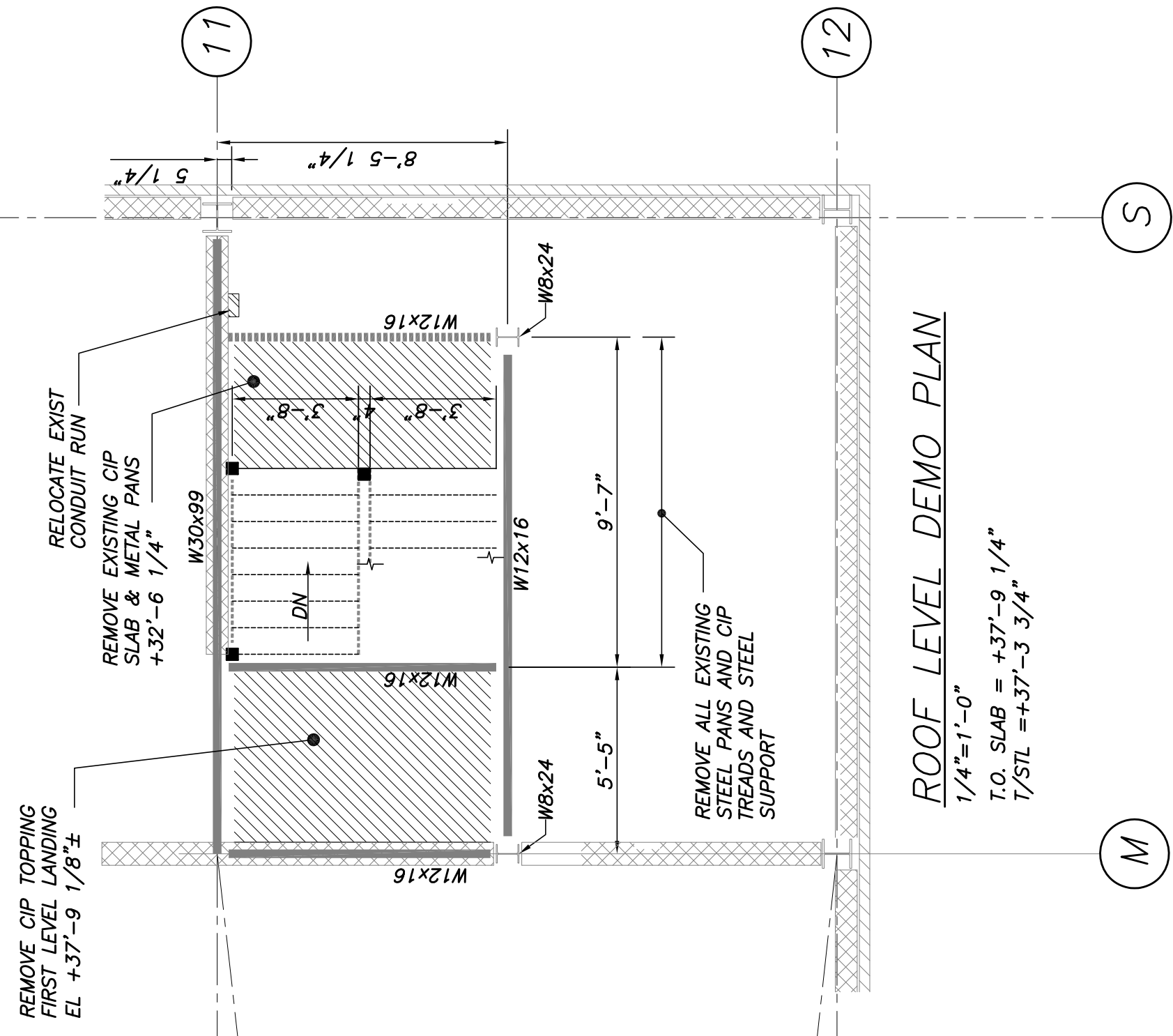
NO 2361

DEMOLITION NOTES:

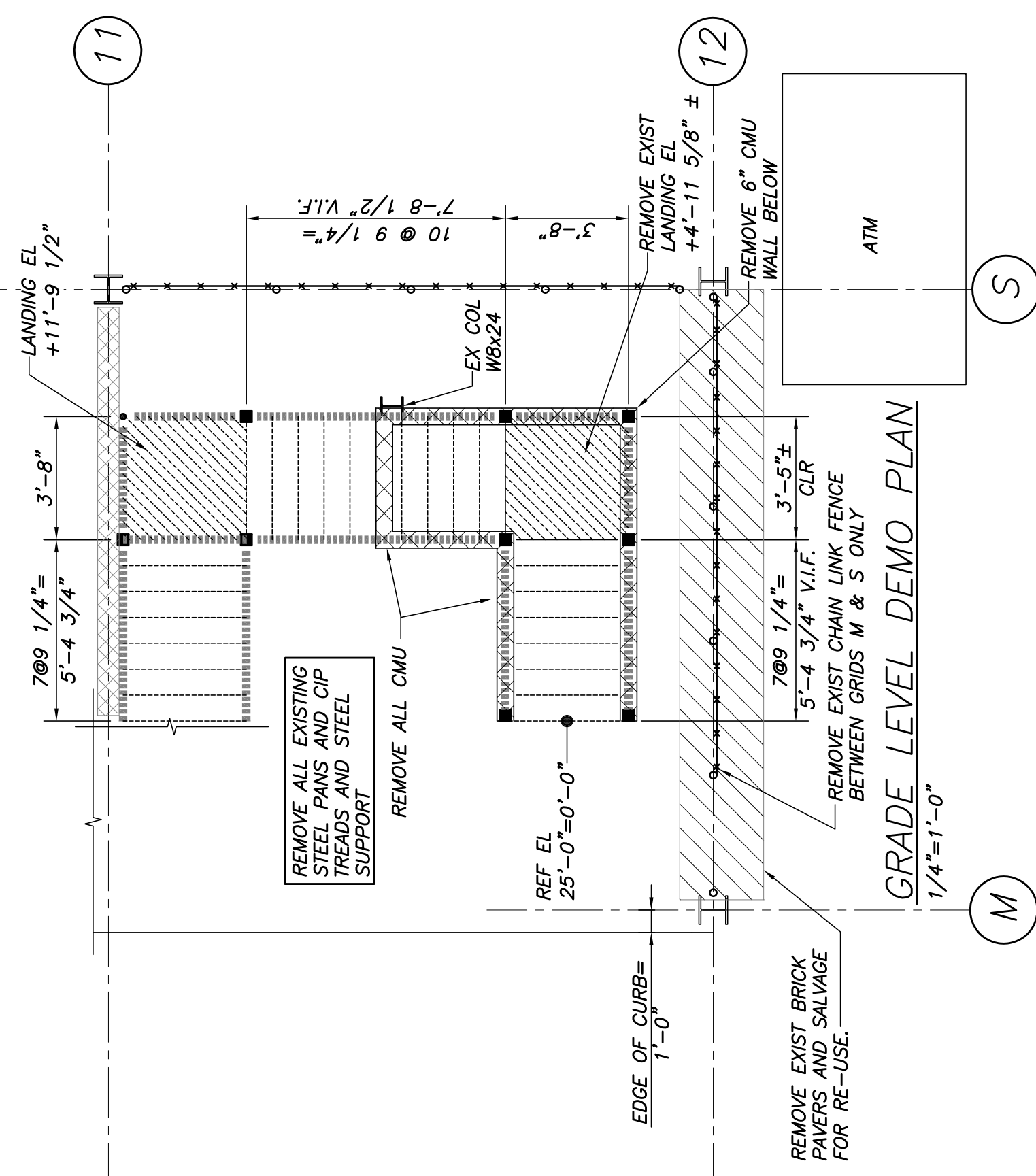
- ALL DEMOLITION SHALL COMPLY WITH ALL FEDERAL, STATE, AND LOCAL SAFETY REQUIREMENTS.
- DEMOLITION SHALL BE COORDINATED WITH PROPERTY OWNER TO ENSURE PROTECTION OF ALL VEHICLES, RESIDENCES, UTILITIES, SAFETY BARRIERS, AND OTHER METHODS FOR PROVIDING THIS PROTECTION.
- AREAS WITHIN AND AROUND THE GARAGE DIRECTLY ADJACENT TO THE WORK SHALL BE COMPLETELY CLOSED TO THE PUBLIC. ACCEPTABLE MANNER TO ALL AUTHORITIES, HAVING JURISDICTION OVER THE WORK SHALL BE PROVIDED AND HAZARDOUS SITUATIONS ARE THOUGHT TO BE POSSIBLE. COMPLY WITH GOVERNING REGULATIONS PERTAINING TO ENVIRONMENTAL PROTECTION FOR POLLUTION CONTROL. THOROUGHLY CLEAN ADJACENT AREAS OF DUST, DIRT AND DEBRIS CAUSED BY DEMOLITION WORK. BEFORE NEW WORK BEGINS, RETURN ADJACENT AREAS TO CONDITION FOUND PRIOR TO START OF DEMOLITION.
- HAZARDOUS MATERIAL NOTE: CONTRACTOR SHALL STOP WORK AND INFORM OWNER IMMEDIATELY IN WRITING OF ANY HAZARDOUS MATERIAL ENCOUNTERED OR THOUGHT TO BE HAZARDOUS MATERIAL. THE OWNER, AFTER RECEIVING WRITTEN NOTICE SHALL INSTRUCT CONTRACTOR ON HOW TO PROCEED.
- CONTRACTOR IS RESPONSIBLE FOR PROPERLY REMOVING AND DISPOSING OF ALL DEMOLITION DEBRIS.



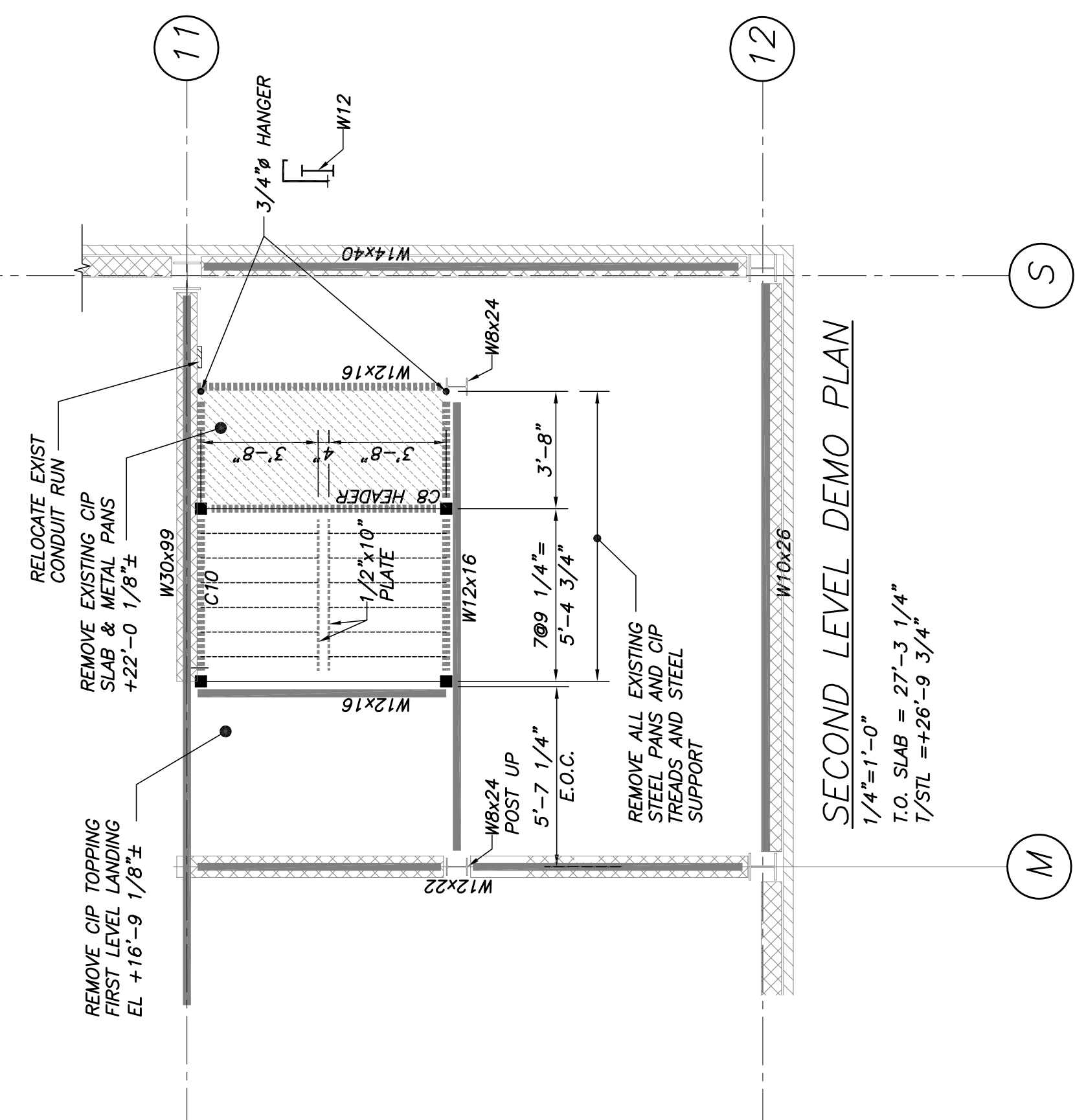
FIRST LEVEL DEMO PLAN
1/4"=1'-0"
T.O. SLAB = +16'-9 1/8"
1/STL = +16'-3 5/8" ± U.N.C.O.



ROOF LEVEL DEMO PLAN
1/4"=1'-0"
T.O. SLAB = +37'-9 1/4"
1/STL = +37'-3 3/4"



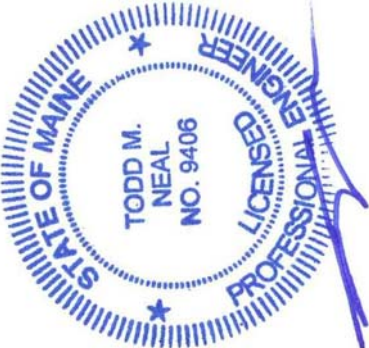
GRADE LEVEL DEMO PLAN
1/4"=1'-0"



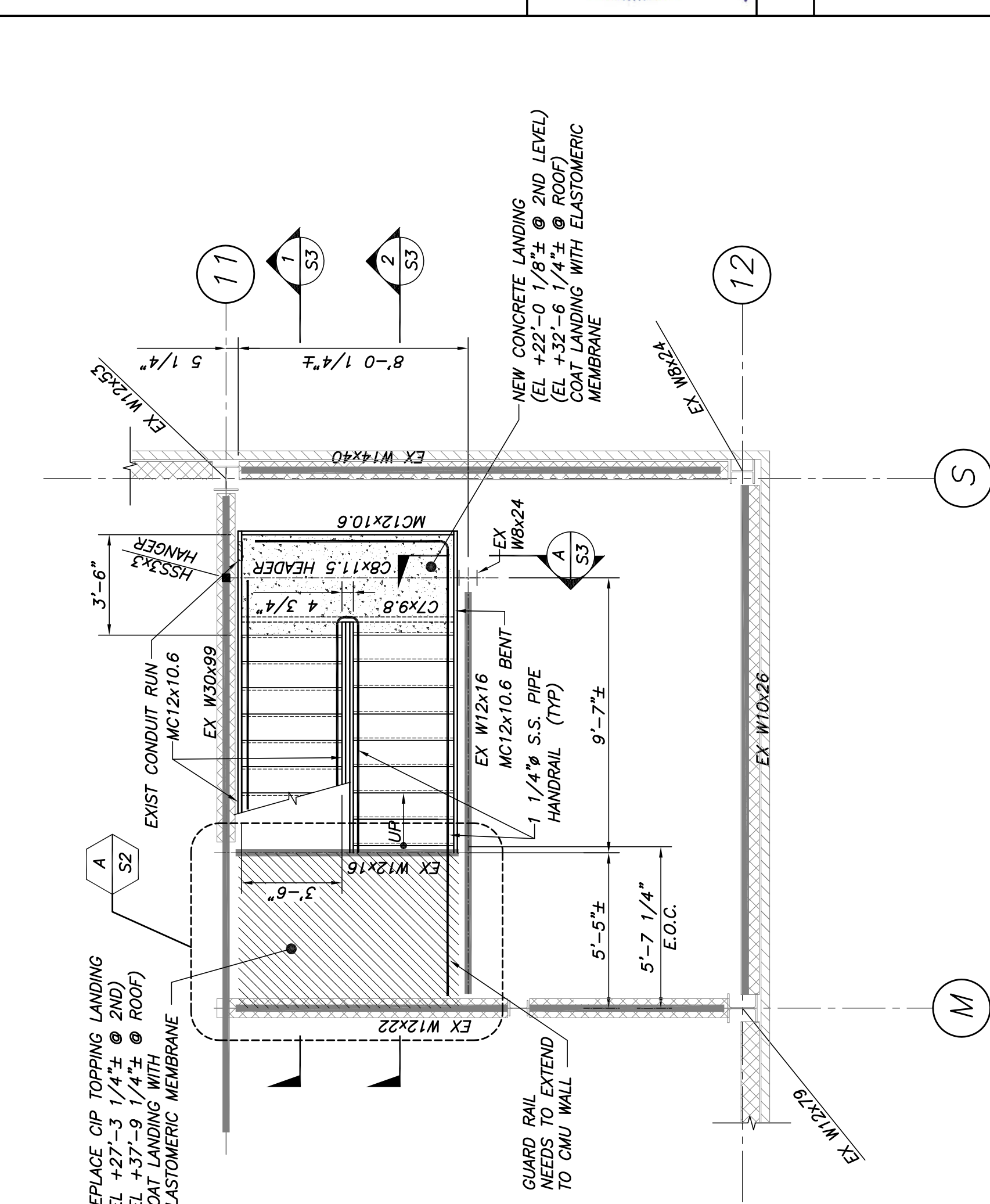
SECOND LEVEL DEMO PLAN
1/4"=1'-0"
T.O. SLAB = 27'-3 1/4"
1/STL = +26'-9 3/4"

THIS DRAWING IS AN INSTRUMENT OF SERVICE AND SHALL REMAIN THE PROPERTY OF BECKER STRUCTURAL ENGINEERS, INC. IT IS TO BE USED ONLY FOR THE PROJECT, DATE, AND LOCATION SPECIFICALLY IDENTIFIED HEREON. NO PART OF THIS DRAWING IS TO BE REPRODUCED OR TRANSMITTED IN ANY FORM OR BY ANY MEANS, ELECTRONIC OR MECHANICAL, INCLUDING PHOTOCOPYING, RECORDING, OR BY ANY INFORMATION STORAGE AND RETRIEVAL SYSTEM, WITHOUT THE WRITTEN PERMISSION OF BECKER STRUCTURAL ENGINEERS, INC. ON COMPLETION OF WORK, IF REQUESTED.

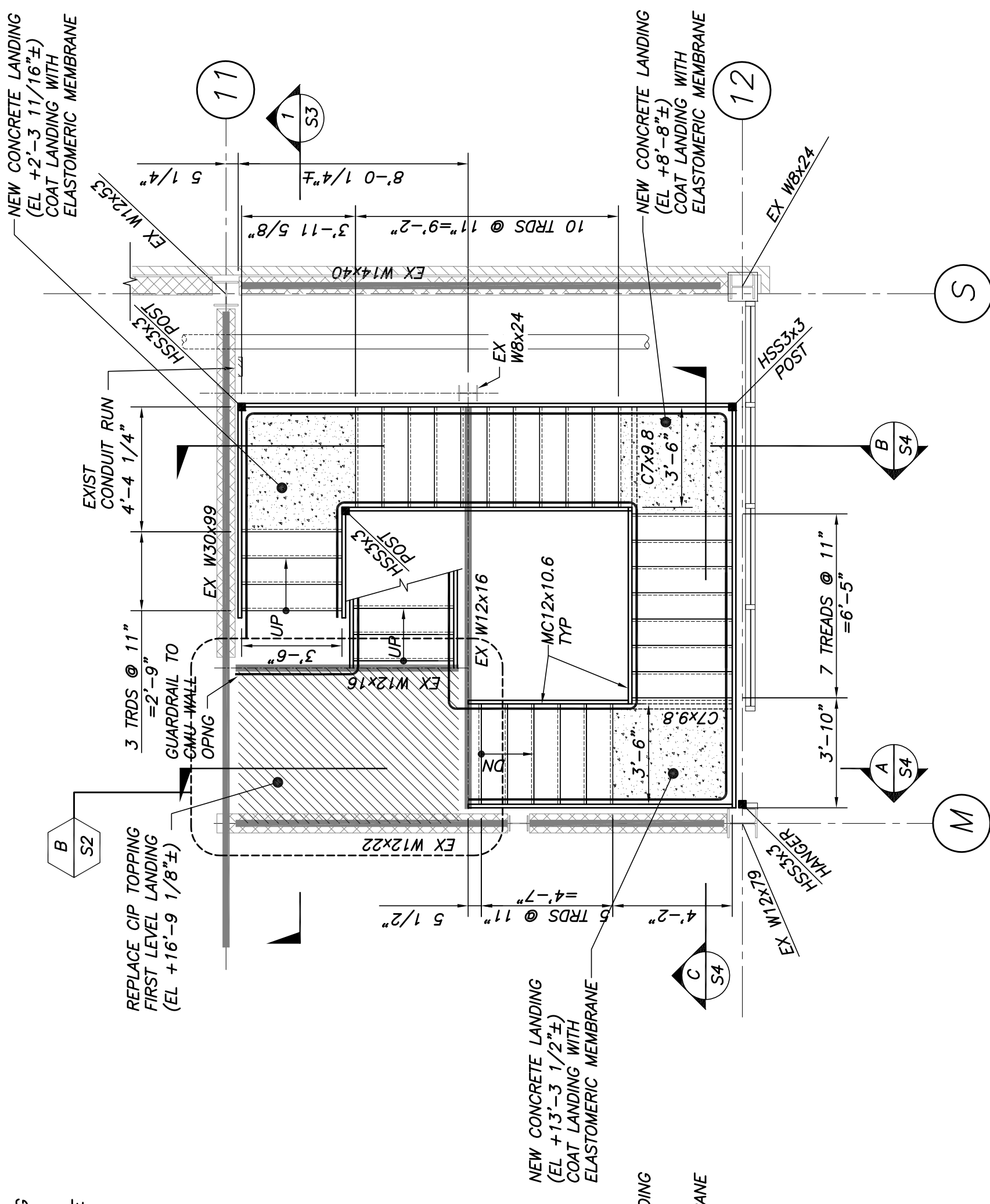
NOT FOR CONSTRUCTION



DESIGNED BY: TMM	DATE: 1/7/13
CHECKED BY: TMM	SCALE: NOTED
DRAWN BY: RJB	
DATE: 1/7/13	
DESCRIPTION: PERMIT / PRICING SET	
REV. NO.	



1ST LEVEL PLAN
 1/4"=1'-0"



2ND & ROOF LEVEL PLAN
 1/4"=1'-0"

GENERAL NOTES:

- THE NOTES ON THESE DRAWINGS ARE NOT INTENDED TO REPLACE SPECIFICATIONS. SEE SPECIFICATIONS FOR REQUIREMENTS IN ADDITION TO GENERAL NOTES. INCONSISTENCIES BETWEEN THESE DRAWINGS AND THE SPECIFICATIONS SHALL BE PROVEN TO THE SATISFACTION OF THE ENGINEER PRIOR TO PROCEEDING WITH THE AFFECTED PORTION OF THE WORK.
- STRUCTURAL DRAWINGS SHALL BE USED IN CONJUNCTION WITH THE JOB SPECIFICATIONS AND DRAWINGS TITLED "GILMAN STREET PARKING GARAGE PHASE 3 RESTORATION".
- THE REPAIRS TO THE STAIR TOWER HAVE BEEN DESIGNED TO RE-ESTABLISH THE STRUCTURAL INTEGRITY OF THE STRUCTURE AFTER THE REPAIRS ARE COMPLETE. IT IS THE CONTRACTOR'S RESPONSIBILITY TO VERIFY THE PRELIMINARY PROPOSED SEQUENCE TO ENSURE THE SAFETY OF THE BUILDING AND ITS COMPONENTS DURING RESTORATION. THIS INCLUDES THE ADDITION OF NECESSARY SHORING, SHEETING, TEMPORARY BRACING, GUYS OR TIEDOWNS. SUCH MATERIAL SHALL REMAIN THE PROPERTY OF THE CONTRACTOR AFTER COMPLETION OF THE PROJECT. DETAILS SHOWN ON ANY STRUCTURAL DRAWINGS SHALL BE CONSIDERED TYPICAL FOR SIMILAR CONDITIONS AS DETERMINED BY THE ENGINEER.
- ALL APPLICABLE FEDERAL, STATE AND MUNICIPAL REGULATIONS SHALL BE FOLLOWED, INCLUDING THE FEDERAL DEPARTMENT OF LABOR OCCUPATIONS SAFETY AND HEALTH ACT.

DESIGN:
 1. BUILDING CODE: IBC 2009
 2. DESIGN LOADS: 100 PSF OR 300LB CONCENTRATED LOAD.
 3. DEFLECTION LIMIT: MAXIMUM L/360 OR 1/4"

STAIR FRAMING NOTES:

MATERIAL:

- STRUCTURAL STEEL PLATES, SHAPES, AND BARS SHALL CONFORM TO ASTM A36 UNLESS NOTED OTHERWISE.
- PIPE SHALL BE TYPE F OR TYPE S, GRADE A, STANDARD WEIGHT (COUNTERSINK) SCREWS OR BOLTS, UNLESS OTHERWISE INDICATED.
- STRUCTURAL TUBING: CONFORM TO ASTM A500, GRADE B46.
- WHERE WELDING IS INDICATED, ALL WELDING SHALL CONFORM TO AWS D1.1-LATEST EDITION. ELECTRODES SHALL CONFORM TO AWS E5.1, E70XX SERIES WITH PROPER ROD TO PRODUCE OPTIMUM WELD (LOW HYDROGEN). ALL WELDERS SHALL BE AWS CERTIFIED.
- FASTENERS: ALL FASTENERS SHALL BE HOT DIP GALVANIZED OR APPROVED EQUAL.
- ANCHORS: SLOTTED STUD PRIMER, FAST-CURING LEAD, AND CHROMATE-FREE, UNIVERSAL MODIFIED-ALKYD PRIMER COMPLYING WITH MPI#79.
- A USE PRIMER WITH A VOC CONTENT OF 420 G/L (3.5 LB/GAL), OR LESS WHEN CALCULATED ACCORDING TO 40 CFR 59, SUBPART D (EPA METHOD 24).
- B USE PRIMER CONTAINING PIGMENTS THAT MAKE IT EASILY DISTINGUISHABLE FROM ZINC-RICH PRIMER.
- NON-SHRINK, NONMETALLIC GROUT: FACTORY-PACKAGED, NON-STRAINING, NON-CORROSIVE, NONGASEOUS GROUT COMPLYING WITH ASTM C-1109. PROVIDE GROUT APPLICATION RECOMMENDED BY MANUFACTURER FOR USE FOR APPLICATION.
- ALL MATERIAL SHALL BE HOT-DIP GALVANIZED.

FABRICATION:

- SHOP ASSEMBLY: PRE-ASSEMBLE ITEMS IN THE SHOP TO GREATEST EXTENT POSSIBLE. DISASSEMBLE UNITS ONLY AS NECESSARY FOR SHIPPING AND HANDLING LIMITATIONS. USE CONNECTIONS THAT MAINTAIN STRUCTURAL VALUE OF JOINED PIECES. CLEARLY MARK UNITS FOR REASSEMBLY AND COORDINATED INSTALLATION.
- CUT, DRILL, AND PUNCH METALS CLEANLY AND ACCURATELY. REMOVE BURRS AND EASE EDGES TO UNLESS OTHERWISE INDICATED. REMOVE SHARP OR BURRS AND EASE EDGES TO A RADIUS OF APPROXIMATELY 1/32 INCH.
- FORM EXPOSED WORK TRUE TO LINE AND LEVEL WITH ACCURATE ANGLES AND SURFACES AND STRAIGHT EDGES.
- WELD CORNERS AND SEAMS CONTINUOUSLY TO COMPLY WITH THE FOLLOWING:

FABRICATION (CONT.):

- FORM EXPOSED CONNECTIONS WITH HAIRLINE JOINTS, FLUSH AND SMOOTH, USING CONCEALED FASTENERS WHERE POSSIBLE. WHERE EXPOSED FASTENERS ARE REQUIRED, USE PHILLIPS FLAT-HEAD (COUNTERSINK) SCREWS OR BOLTS, UNLESS OTHERWISE INDICATED. LOCATE JOINTS WHERE LEAST CONSPICUOUS.
- WHERE WELDING IS INDICATED, ALL WELDING SHALL CONFORM TO AWS D1.1-LATEST EDITION. ELECTRODES SHALL CONFORM TO AWS E5.1, E70XX SERIES WITH PROPER ROD TO PRODUCE OPTIMUM WELD (LOW HYDROGEN). ALL WELDERS SHALL BE AWS CERTIFIED.
- FASTENERS: ALL FASTENERS SHALL BE HOT DIP GALVANIZED OR APPROVED EQUAL.
- ANCHORS: SLOTTED STUD PRIMER, FAST-CURING LEAD, AND CHROMATE-FREE, UNIVERSAL MODIFIED-ALKYD PRIMER COMPLYING WITH MPI#79.
- A USE PRIMER WITH A VOC CONTENT OF 420 G/L (3.5 LB/GAL), OR LESS WHEN CALCULATED ACCORDING TO 40 CFR 59, SUBPART D (EPA METHOD 24).
- B USE PRIMER CONTAINING PIGMENTS THAT MAKE IT EASILY DISTINGUISHABLE FROM ZINC-RICH PRIMER.
- NON-SHRINK, NONMETALLIC GROUT: FACTORY-PACKAGED, NON-STRAINING, NON-CORROSIVE, NONGASEOUS GROUT COMPLYING WITH ASTM C-1109. PROVIDE GROUT APPLICATION RECOMMENDED BY MANUFACTURER FOR USE FOR APPLICATION.
- ALL MATERIAL SHALL BE HOT-DIP GALVANIZED.

INSTALLATION:

- CUTTING, FITTING, AND PLACEMENT: PERFORM CUTTING, DRILLING, AND FITTING ACCURATELY FOR INSTALLING METAL FABRICATIONS. SET METAL FABRICATIONS ACCURATELY IN LOCATION, ALIGNMENT, AND ELEVATION. WITH EDGES AND SURFACES LEVEL, PLUMB, TRUE, AND FREE OF RACK; AND MEASURED FROM ESTABLISHED LINES AND LEVELS.
- JOINTS: WELDED CONNECTIONS ACCURATELY TOGETHER TO FORM HAIRLINE JOINTS. WELDS SHALL NOT BE SHOP WELDED BECAUSE OF SHIPPING SIZE LIMITATIONS. DO NOT WELD, CUT, OR ABRADE SURFACES OF EXTERIOR UNITS THAT HAVE BEEN HOT-DIP GALVANIZED AFTER FABRICATION AND ARE FOR BOLTED OR SCREWED FIELD CONNECTIONS.
- FIELD WELDING: COMPLY WITH THE FOLLOWING REQUIREMENTS:
 - USE MATERIALS AND METHODS THAT MINIMIZE DISTORTION AND FIELD WELDING FLUX IMMEDIATELY.
 - OBTAIN FUSION WITHOUT UNDERCUT OR OVERLAP.
 - REMOVE WELDING FLUX IMMEDIATELY.
 - AT EXPOSED CONNECTIONS, FINISH EXPOSED WELDS AND SURFACES SMOOTH AND BLENDED SO NO ROUGHNESS SHOWS AFTER FINISHING AND CONTOUR OF WELDED SURFACE MATCHES THAT OF ADJACENT SURFACE.
- FASTENING TO IN-PLACE CONSTRUCTION: PROVIDE ANCHORAGE DEVICES TO BE FASTENED TO IN-PLACE CONSTRUCTION. PROVIDE THROUGH FASTENERS FOR USE WITH CONCRETE AND MASONRY INSERTS, TOGGLE BOLTS, THROUGH BOLTS, LAG BOLTS, WOOD SCREWS, AND OTHER CONNECTORS.
- PROVIDE TEMPORARY BRACING OR ANCHORS IN FORMWORK FOR ITEMS THAT ARE TO BE BUILT INTO CONCRETE, MASONRY, OR SIMILAR CONSTRUCTION. COAT CONCEALED SURFACES OF ALUMINUM CORROSION PROTECTION: COAT CONCEALED SURFACES OF ALUMINUM THAT WILL COME INTO CONTACT WITH GROUT, CONCRETE, MASONRY, WOOD, OR DISSIMILAR METALS WITH A HEAVY COAT OF BITUMINOUS PAINT.

HANDBRAIL NOTES:

MATERIAL:

- ALL HANDBRAILS SHALL BE 1 1/4" DIAMETER STAINLESS STEEL TUBING (ASTM A 554, GRADE MT 304).
- ALL FASTENERS SHALL BE TYPE 304 STAINLESS STEEL.
- JOINING RODS SHALL SELECT ACCORDING TO AHS SPECIFICATIONS FOR METAL ALLOY WELDED.
- PROVIDE STAINLESS STEEL WALL BRACKETS BY CARLSBAD OR APPROVED EQUAL.

FABRICATION:

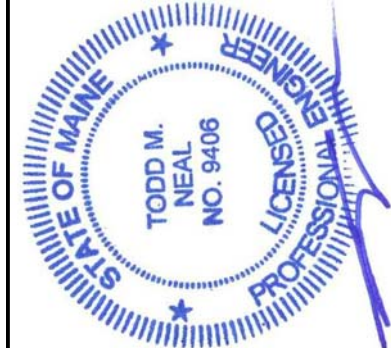
- FABRICATE RAILINGS TO COMPLY WITH REQUIREMENTS INDICATED FOR DESIGN, DIMENSIONS, MEMBER SIZES AND SPACING, DETAILS, FINISH, AND ANCHORAGE.
- ASSEMBLE RAILINGS IN THE SHOP TO GREATEST EXTENT POSSIBLE TO MINIMIZE FIELD SPlicing AND DISASSEMBLY ON-SITE. DISASSEMBLY OR SPlicing ON-SITE IS NECESSARY FOR SHIPPING AND HANDLING LIMITATIONS. CLEARLY MARK UNITS FOR REASSEMBLY AND COORDINATED INSTALLATION. USE CONNECTIONS THAT MAINTAIN STRUCTURAL VALUE OF JOINED PIECES.
- CUT, DRILL, AND PUNCH METALS CLEANLY AND ACCURATELY. REMOVE BURRS AND EASE EDGES TO A RADIUS OF APPROXIMATELY 1/32 INCH, UNLESS OTHERWISE INDICATED. REMOVE SHARP OR BURRS AND EASE EDGES TO A RADIUS OF APPROXIMATELY 1/32 INCH.
- PROVIDE WEEP HOLES WHERE WATER MAY ACCUMULATE.
- CONNECTIONS: FABRICATE RAILINGS WITH WELDED CONNECTIONS, UNLESS OTHERWISE INDICATED. WELDED CONNECTIONS SHALL BE FULL PENETRATION JOINTS TO BE WELDED TO THE MEMBER OR USE FITTINGS DESIGNED FOR THIS PURPOSE. WELD ALL AROUND AT CONNECTIONS, INCLUDING AT FITTINGS.
- FORM SIMPLE AND COMPOUND CURVES BY BENDING MEMBERS IN JIGS TO PRODUCE UNIFORM CURVATURE FOR EACH RETROFITIVE CONFIGURATION REQUIRED; MAINTAIN CROSS SECTION OF MEMBER THROUGHOUT ENTIRE BEND WITHOUT BUCKLING, TWISTING, CRACKING, OR OTHERWISE DEFORMING EXPOSED SURFACES OF COMPONENTS.
- CLOSE EXPOSED ENDS OF RAILING MEMBERS WITH PREFABRICATED END FITTINGS.

INSTALLATION:

- FIT EXPOSED CONNECTIONS TOGETHER TO FORM TIGHT, HAIRLINE JOINTS.
- PERFORM CUTTING, DRILLING, AND FITTING REQUIRED FOR INSTALLING RAILINGS. SET RAILINGS ACCURATELY IN LOCATION, ALIGNMENT, AND ELEVATION; MEASURED FROM ESTABLISHED LINES AND LEVELS AND FREE OF RACK.
- ALIGN RAILS SO VARIATIONS FROM LEVEL FOR HORIZONTAL MEMBERS AND VARIATIONS FROM LEVEL WITH RAISE OF STEPS AND RAMPS FOR SLOPING MEMBERS DO NOT EXCEED 1/4 INCH IN 12 FEET.
- ADJUST RAILINGS BEFORE ANCHORING TO ENSURE MATCHING ALIGNMENT AT ABUTTING JOINTS.
- WELDED CONNECTIONS: USE FULLY WELDED JOINTS FOR PERMANENTLY CONNECTING RAILING COMPONENTS. COMPLY WITH REQUIREMENTS FOR WELDED CONNECTIONS WHETHER WELDING IS PERFORMED IN THE SHOP OR IN THE FIELD.
- EXPANSION JOINTS: INSTALL EXPANSION JOINTS AT LOCATIONS INDICATED BUT NOT FARTHER APART THAN REQUIRED TO ACCOMMODATE THERMAL MOVEMENT. PROVIDE SLIP-JOINT INTERNAL SLEEVE EXTENDING 2 INCHES BEYOND JOINT ON EITHER SIDE. FASTEN INTERNAL SLEEVE SECURELY TO 1 SIDE, AND LOCATE JOINT WITHIN 6 INCHES OF POST.

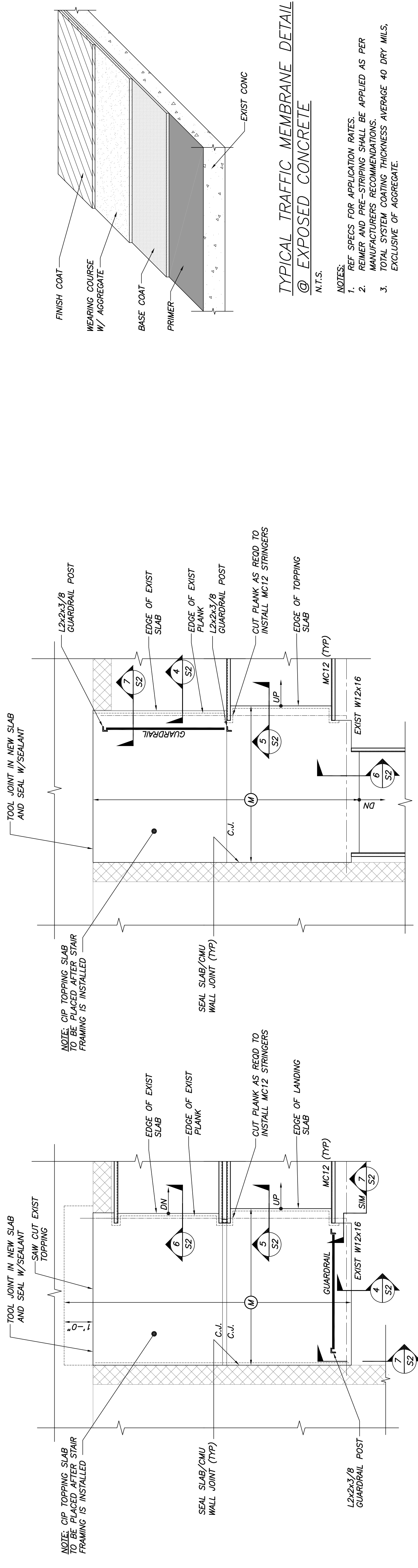
FINISH:

- REMOVE ALL TOOL AND DIE MARKS AND STRECH LINES OR BLEND INTO FINISH.
- PROVIDE A BRUSHED NO. 4 FINISH TO ALL STAINLESS STEEL HANDBRAILS.
- WHEN FINISHING IS COMPLETED, WASH AND RINSE SURFACES. REMOVE EMBEDDED FOREIGN MATTER AND LEAVE SURFACES CHEMICALLY CLEAN.



DESIGNED BY: TMN	DATE: 1/7/13
DRAWN BY: RJB	SCALE: NOTED
CHECKED BY: TMN	
DESCRIPTION: PERMIT / PRICING SET	
APPROVED:	

PROJECT: FORE STREET PARKING FACILITY
 PORTLAND, MAINE
 FORE STREET STAIR REPLACEMENT
 FORE STREET STAIR REPLACEMENT
 DATE: 1/7/13



DETAIL
 1/2"=1'-0"

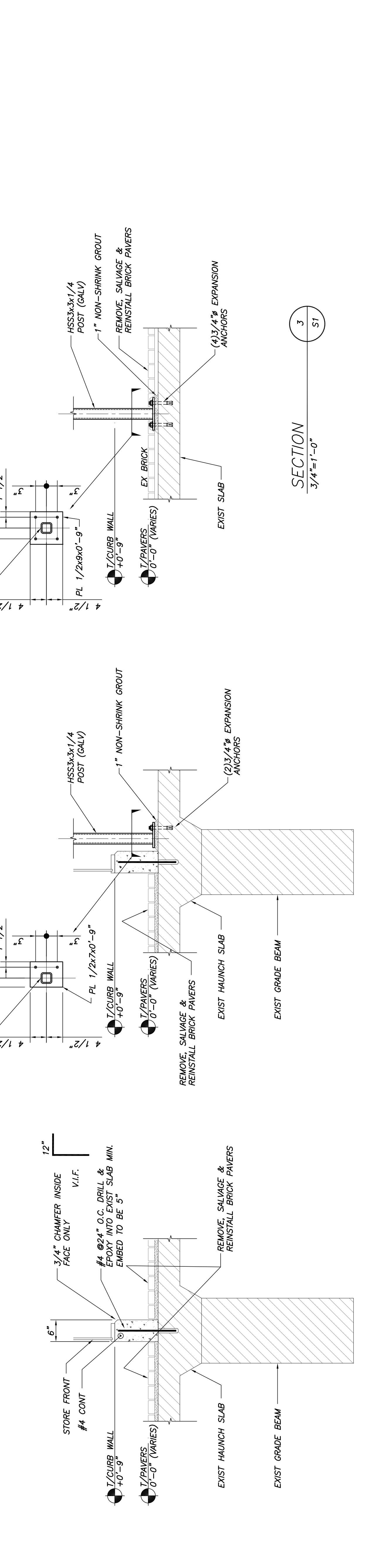
- NOTES:
1. $f'_c=5,000$ PSI MIN. 6 1/2"±, 1% AIR CONTENT.
 2. C.J. INDICATES HAND TOOLED CONTROL JOINT FILL WITH SEALANT.
 3. (M) INDICATES EXTENT OF PEDESTRIAN TRAFFIC MEMBRANE SEE TYPICAL DETAIL THIS SHEET.

DETAIL
 1/2"=1'-0"

- NOTES:
1. $f'_c=5,000$ PSI MIN. 6 1/2"±, 1% AIR CONTENT.
 2. C.J. INDICATES HAND TOOLED CONTROL JOINT FILL WITH SEALANT.
 3. (M) INDICATES EXTENT OF PEDESTRIAN TRAFFIC MEMBRANE SEE TYPICAL DETAIL THIS SHEET.

DETAIL
 1/2"=1'-0"

- NOTES:
1. REF SPECS FOR APPLICATION RATES.
 2. REIMER AND PRE-STRIPING SHALL BE APPLIED AS PER MANUFACTURERS RECOMMENDATIONS.
 3. TOTAL SYSTEM COATING THICKNESS AVERAGE 40 DRY MILS, EXCLUSIVE OF AGGREGATE.



SECTION
 3/4"=1'-0"

SECTION
 3/4"=1'-0"

SECTION
 3/4"=1'-0"

SECTION
 3/4"=1'-0"

SECTION
 3/4"=1'-0"

SECTION
 3/4"=1'-0"

SECTION
 3/4"=1'-0"

SECTION
 3/4"=1'-0"

SECTION
 3/4"=1'-0"

SECTION
 3/4"=1'-0"

SECTION
 3/4"=1'-0"

SECTION
 3/4"=1'-0"

SECTION
 3/4"=1'-0"

SECTION
 3/4"=1'-0"

SECTION
 3/4"=1'-0"

SECTION
 3/4"=1'-0"

SECTION
 3/4"=1'-0"

SECTION
 3/4"=1'-0"

SECTION
 3/4"=1'-0"

SECTION
 3/4"=1'-0"

SECTION
 3/4"=1'-0"

SECTION
 3/4"=1'-0"

SECTION
 3/4"=1'-0"

SECTION
 3/4"=1'-0"

SECTION
 3/4"=1'-0"

SECTION
 3/4"=1'-0"

SECTION
 3/4"=1'-0"

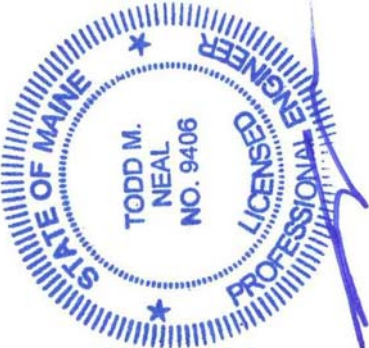
SECTION
 3/4"=1'-0"

SECTION
 3/4"=1'-0"

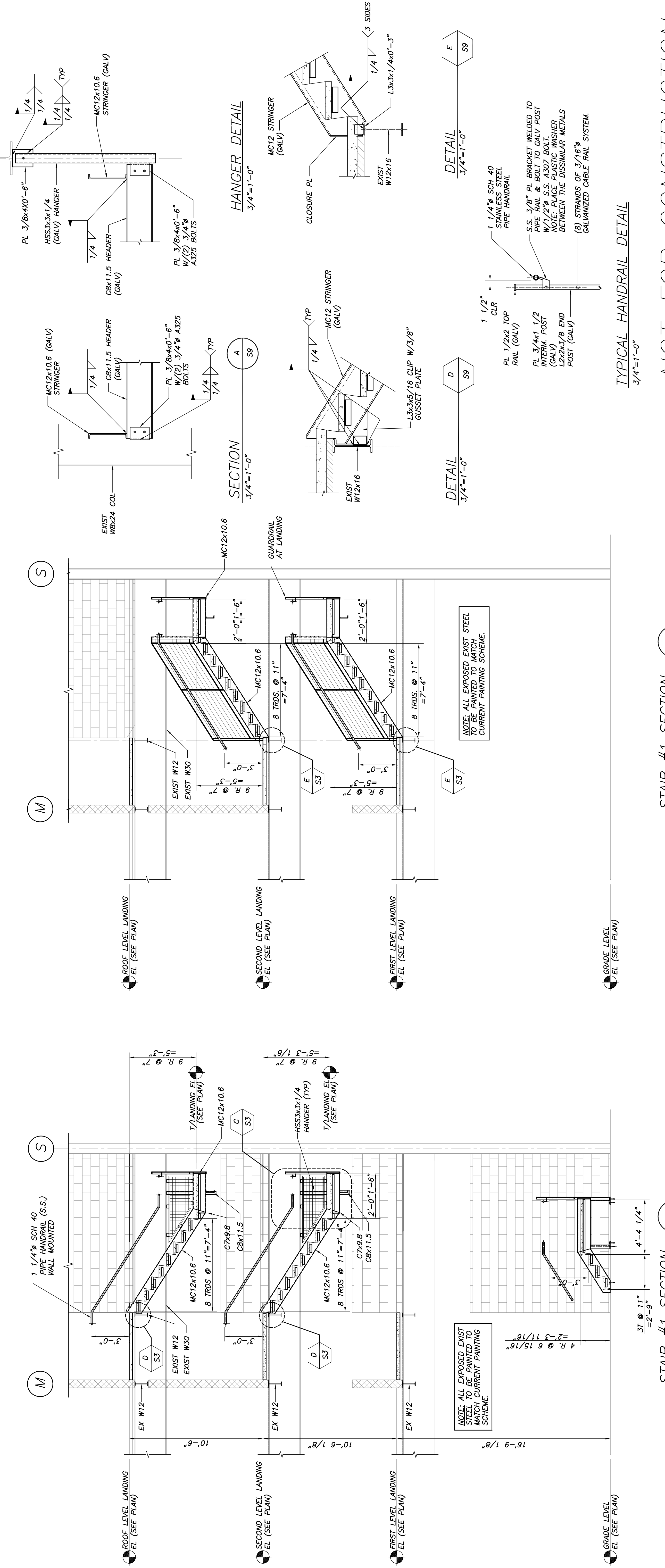
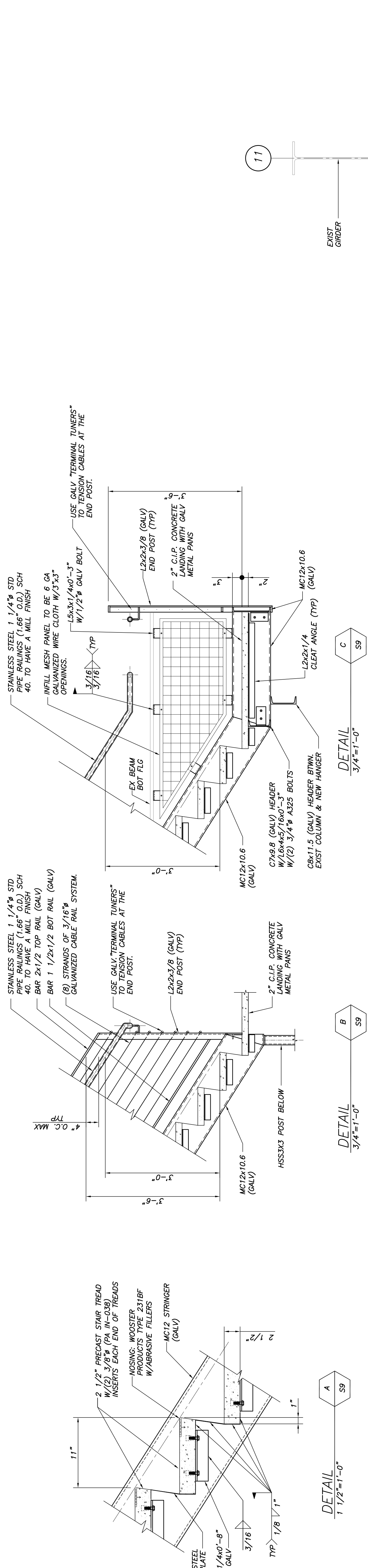
SECTION
 3/4"=1'-0"

SECTION
 3/4"=1'-0"

SECTION
 3/4"=1'-0"



DESIGNED BY: TMN	DATE: 1/7/13
DRAWN BY: RJB	SCALE: NOTED
CHECKED BY: TMN	DATE: 1/7/13
PERMIT / PRICING SET	



STAIR #1 SECTION
 1/4"=1'-0" SECTION 1

STAIR #1 SECTION
 1/4"=1'-0" SECTION 2

STAIR #1 SECTION
 1/4"=1'-0" SECTION 3

THIS DRAWING IS AN INSTRUMENT OF SERVICE AND SHALL REMAIN THE PROPERTY OF BECKER STRUCTURAL ENGINEERS INC. IT IS TO BE USED ONLY FOR THE PROJECT AND SITE SPECIFICALLY IDENTIFIED HEREON. NO PART OF THIS DRAWING IS TO BE REPRODUCED OR TRANSMITTED IN ANY FORM OR BY ANY MEANS, ELECTRONIC OR MECHANICAL, INCLUDING PHOTOCOPYING, RECORDING, OR BY ANY INFORMATION STORAGE AND RETRIEVAL SYSTEM, WITHOUT THE WRITTEN PERMISSION OF BECKER STRUCTURAL ENGINEERS INC. ON COMPLETION OF WORK, IF REQUESTED.

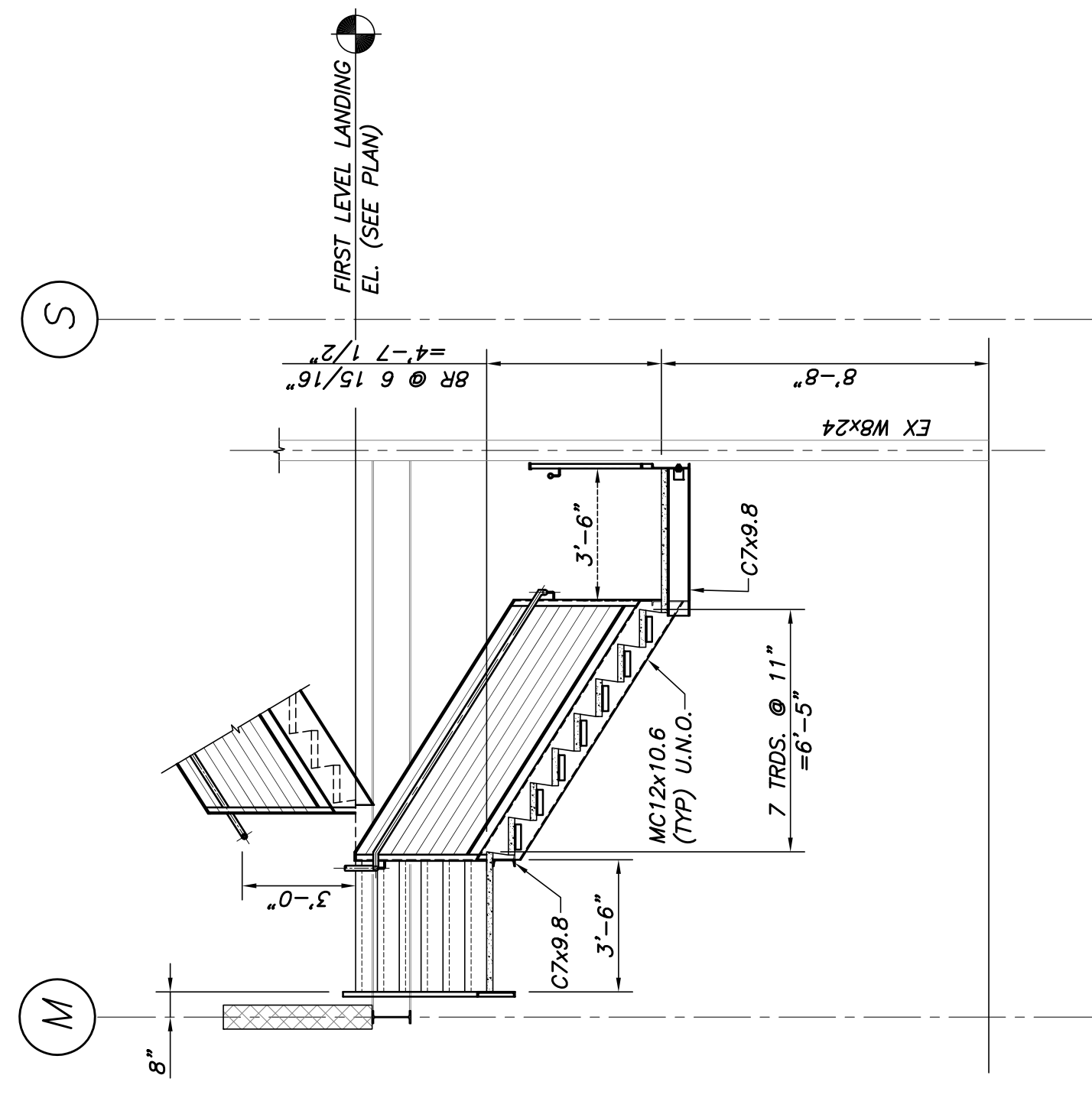
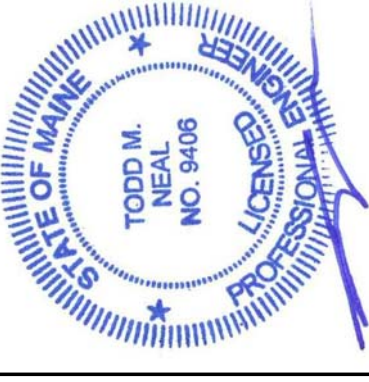
NOT FOR CONSTRUCTION

PROJECT: FORE STREET PARKING FACILITY
 PORTLAND, MAINE
 FORE STREET STAIR REPLACEMENT
 STAIR SECTIONS

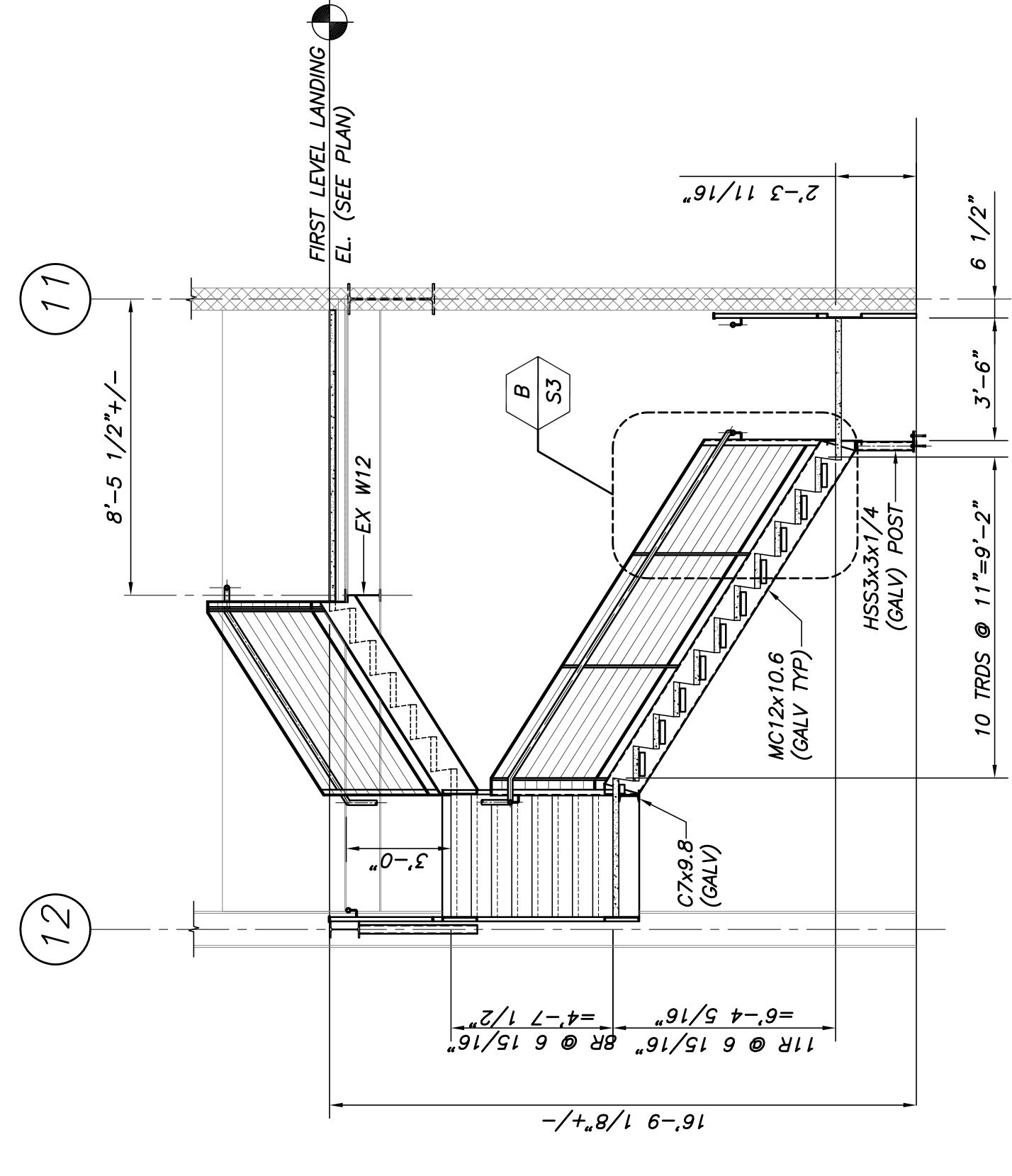
S4

DESIGNED BY:	TAN
DRAWN BY:	RJB
CHECKED BY:	TAN
SCALE:	NOTED
DATE:	1/7/13

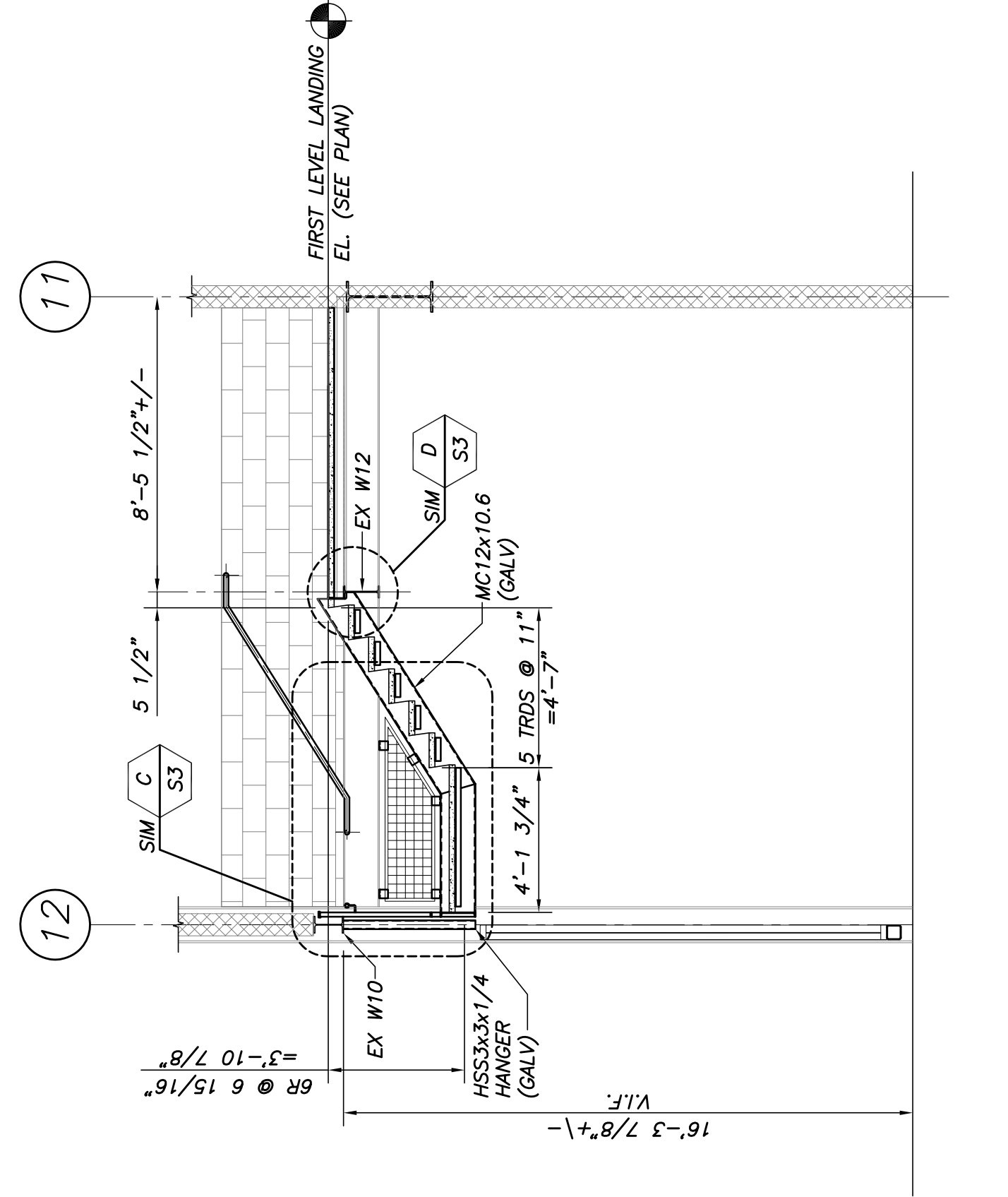
REV. NO.	-	DATE	1/7/13	DESCRIPTION	PRICING / PERMIT SET
APPROV.	-				



SECTION C-ST
 1/4"=1'-0"



SECTION B-ST
 1/4"=1'-0"



SECTION A-ST
 1/4"=1'-0"