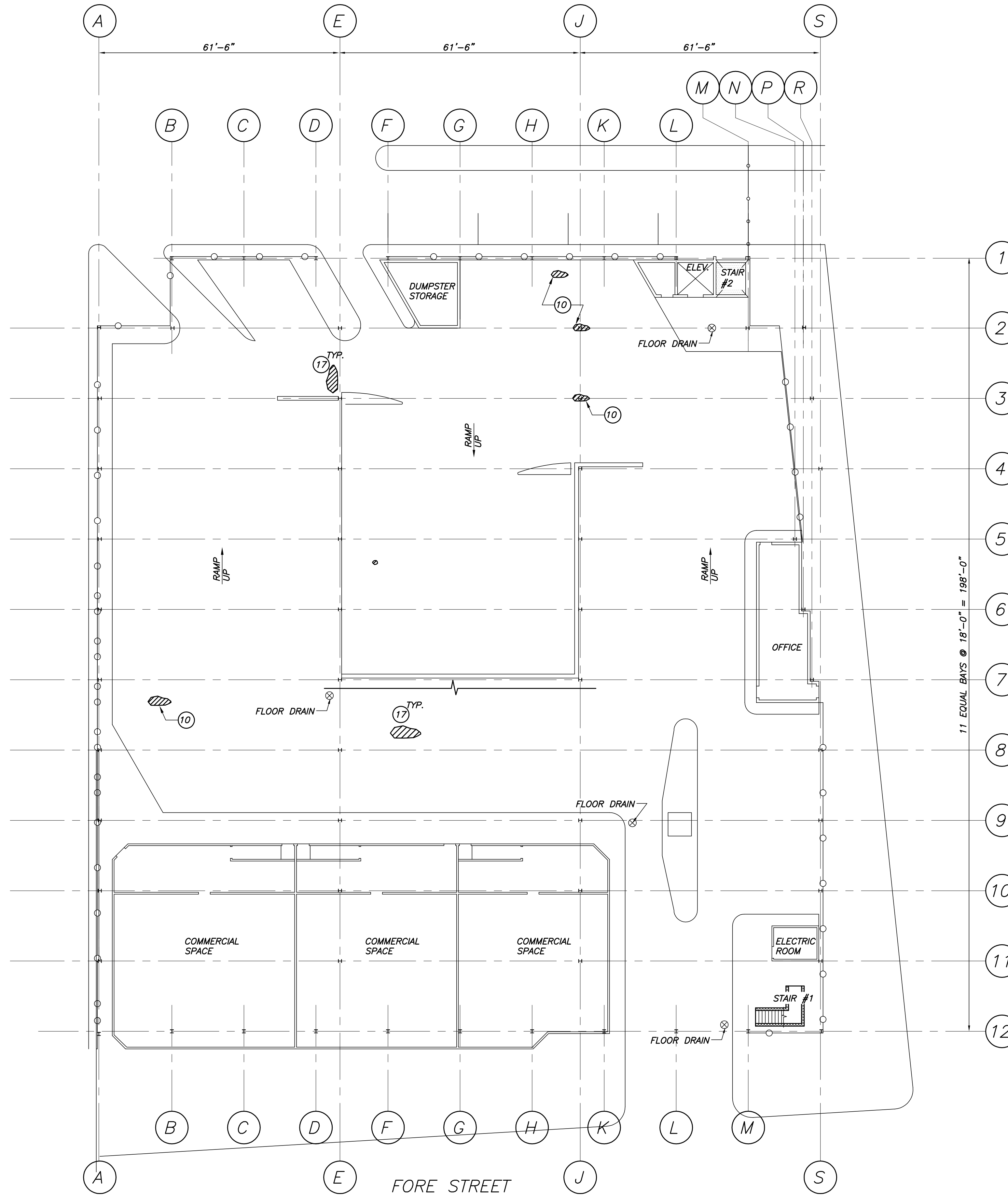


ISOMETRIC KEY

CONTRACTOR NOTE:
DO NOT CUT REINFORCEMENT
DURING TOPPING SLAB REMOVAL



GRADE LEVEL
1/16"=1'-0"



- NOTES:
1. INDICATES EXTENT OF REPAIR
 2. INDICATES EXTENT OF REPAIR

REPAIR NOTES:

1. INSPECT CONNECTIONS AT CAR BARRIER CABLES ENDS AND REMOVE SLACK.
2. CRACK REPAIR. ROUT, CLEAN & CAULK. SEE DETAIL DWG S3.1
3. CONTROL JOINT - REMOVE ALL DETERIORATED EXISTING CAULKING, RE-CAULK, SEE DETAIL DWG S3.1
6. CAST IN PLACE CONCRETE TOPPING REPAIR, SEE REPAIR DETAILS DWG S3.1
7. NOT USED
8. LOCATION OF EXISTING TRAFFIC MEMBRANE. RE-COAT AS REQUIRED AS PER SPECIFICATION SECTION 07180. SEE DETAILS DWG S3.2
9. APPLY (2) COATS OF PROTECTOSIL CIT AT 200 S.F./GAL AND CONCRETE SEALER AFTER REPAIRS ARE COMPLETED
15. KNOCK DOWN LOOSE OVERHEAD CONCRETE AND COAT EXPOSED REBAR.
16. RE-STRIPE TO MATCH EXISTING AS REQD
17. CONCRETE DECK OVERHEAD REPAIR, SEE REPAIR DETAILS S3.1. IF REPAIR ALIGNS W/CIP REPAIR ABOVE, PROVIDE FULL DEPTH REPAIR PER S3.1
18. REMOVE ASPHALTIC PAVEMENT AND SOUND/REPAIR CONCRETE TOPPING SLAB. REPAIR/TIE IN NEW WATERPROOFING MEMBRANE



Approved	
Issued For	ISSUED FOR PRICING
Date	9/13/13
Rev No	10/11/13
	ISSUED FOR PERMIT

FORE STREET PARKING FACILITY
PORTLAND, MAINE
PHASE 7 GRADE LEVEL

Designed	AMJ	Scale	AS NOTED
Drawn	MK	Date	9/13/13
Checked	TMN	Becker Job Number	3144

S1.1

THIS DRAWING IS AN INSTRUMENT OF SERVICE AND SHALL REMAIN THE PROPERTY OF BECKER STRUCTURAL ENGINEERS INC. IT SHALL NOT BE REPRODUCED, COPIED, LENT, OR DISPOSED OF DIRECTLY OR INDIRECTLY FOR ANY PURPOSE OTHER THAN FOR WHICH IT IS SPECIFICALLY FURNISHED AND MUST BE RETURNED TO BECKER STRUCTURAL ENGINEERS INC. ON COMPLETION OF WORK, IF REQUESTED.