

41 Hutchins Drive
Portland, Maine 04102
800.426.4262 | www.woodardcurran.com

WOODARD & CURRAN

COMMITMENT & INTEGRITY DRIVE RESULTS

THIS DOCUMENT IS THE PROPERTY OF WOODARD & CURRAN, INC. AND ITS CLIENT. REPRODUCTION OR MODIFICATION WITHOUT WRITTEN PERMISSION IS PROHIBITED.

STATE OF MAINE
DENISE CAMERON
No. 11279
REGISTERED PROFESSIONAL ENGINEER

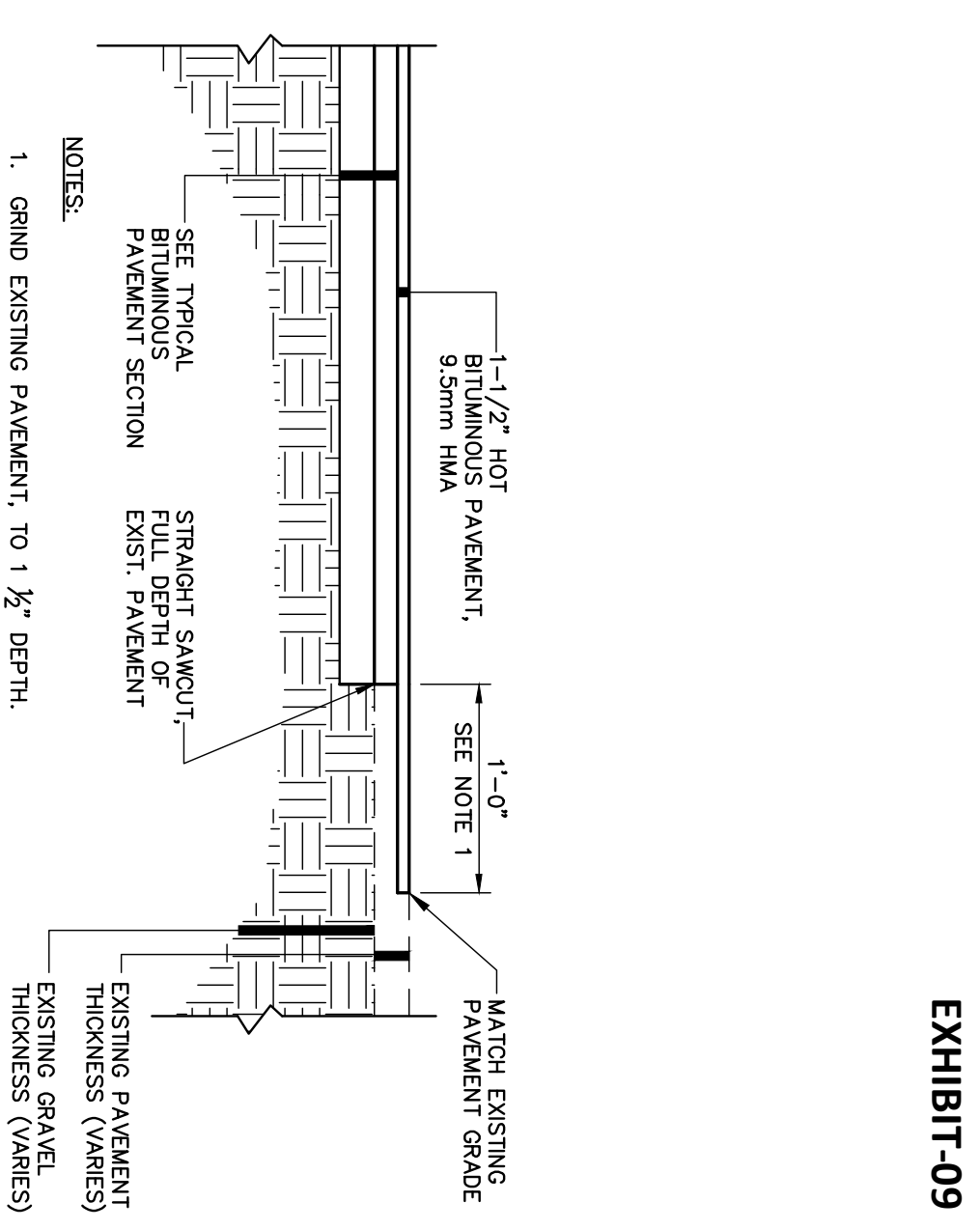
DESIGNED BY: MDLM	CHECKED BY: DLC
DRAWN BY: JBC	22586901-000A.DWG
1 FINAL SITE PLAN APPLICATION SUBMISSION	9/28/2012
REV	DESCRIPTION DATE

CIVIL DETAILS - 2

COW PLAZA HOTEL, LLC
100 COMMERCIAL STREET, SUITE 306
PORTLAND, MAINE, C/O TIM SOLEY

CANAL PLAZA HOTEL

JOB NO.: 225869.01
DATE: OCTOBER 2012
SCALE: AS NOTED
SHEET: 6 OF 9



PAVEMENT BUTT JOINT DETAIL

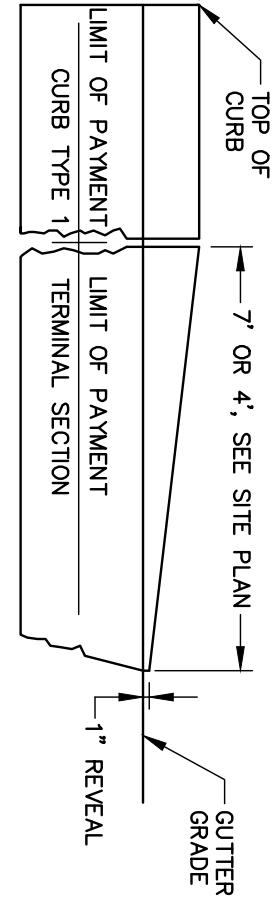
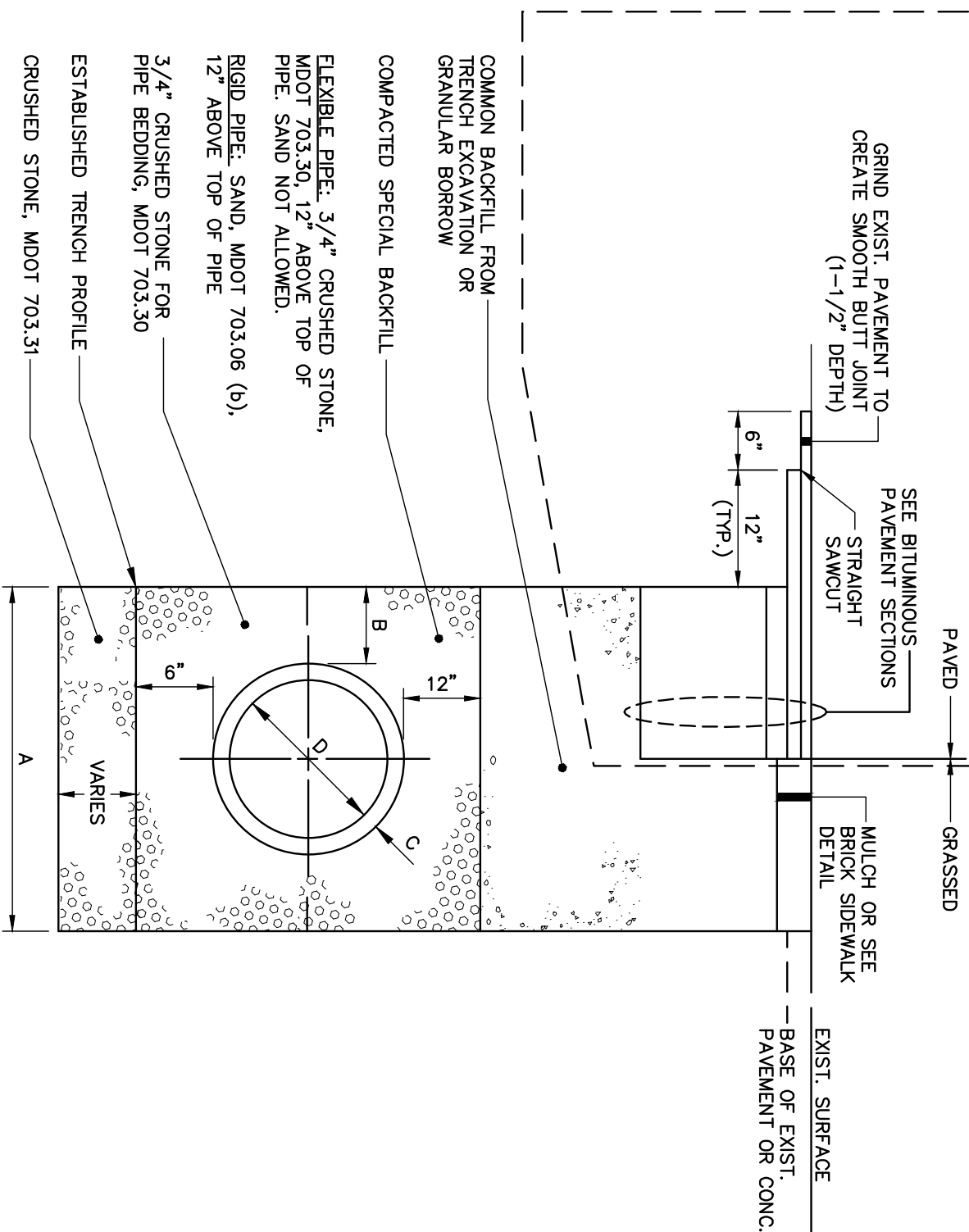
- NOTES:
1. GRIND EXISTING PAVEMENT TO 1/2" DEPTH.
 2. PROVIDE BITUMINOUS TACK COAT ON VERTICAL AND HORIZONTAL SURFACES PRIOR TO PAVING.
 3. DETAILS APPLICABLE TO PAVEMENT BUTT JOINTS AT ROADWAY WORK LIMITS. REFER TO PIPE INSTALLATION DTL. OR BITUMINOUS PAVEMENT SECTION DTL. FOR TRENCH REPAIR REQUIREMENTS.

PIPE INSTALLATION DETAIL - NOTES

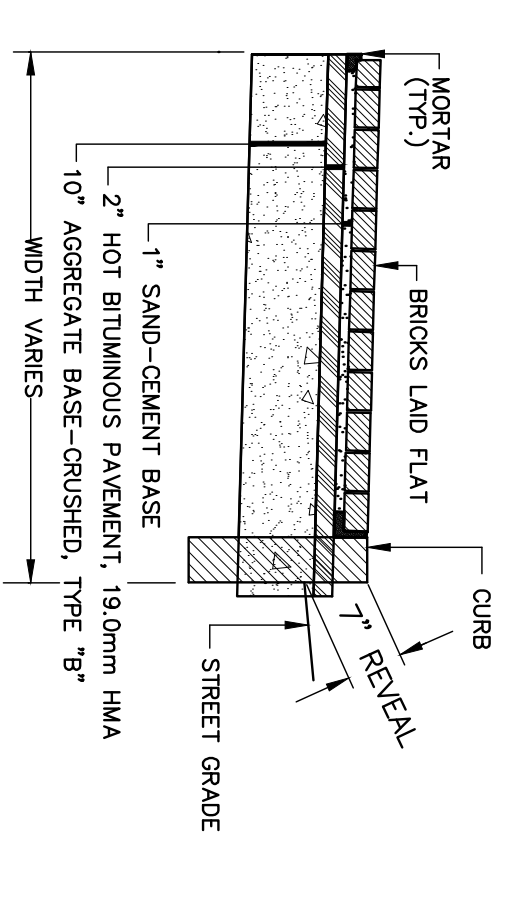
1. IN PAVED AREAS, DEPTHS OF GRAVEL AND HOT MIX ASPHALT PAVEMENT SHALL MATCH THE GREATER OF EXISTING CONDITIONS OR THE REQUIREMENTS FOR THE CORRESPONDING STREET CLASSIFICATION.
2. DIMENSION "B" SHALL BE SUFFICIENT TO ALLOW CRUSHED STONE BEDDING TO BE PLACED AND COMPACTED UNDER THE HANGERS OF THE PIPE. BUT IN ALL CASES "B" SHALL BE AT LEAST 9".
3. DIMENSION "A" SHALL BE BASED ON PIPE DIAMETER, AS SET FORTH IN THE FOLLOWING TABLE.

PIPE DIAMETER, "Ø"	MAX. TRENCH WIDTH, "A"
6	4.0
8	4.0
10	4.0
11	4.0
15	4.0
18	5.0
21	5.0
27	6.0
30	6.0
36	6.0
42	8.0
48	8.0

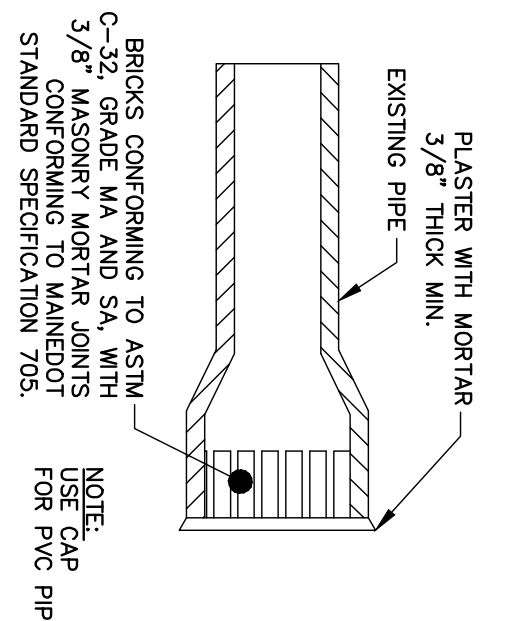
PIPE INSTALLATION DETAIL



TERMINAL CURB SECTION



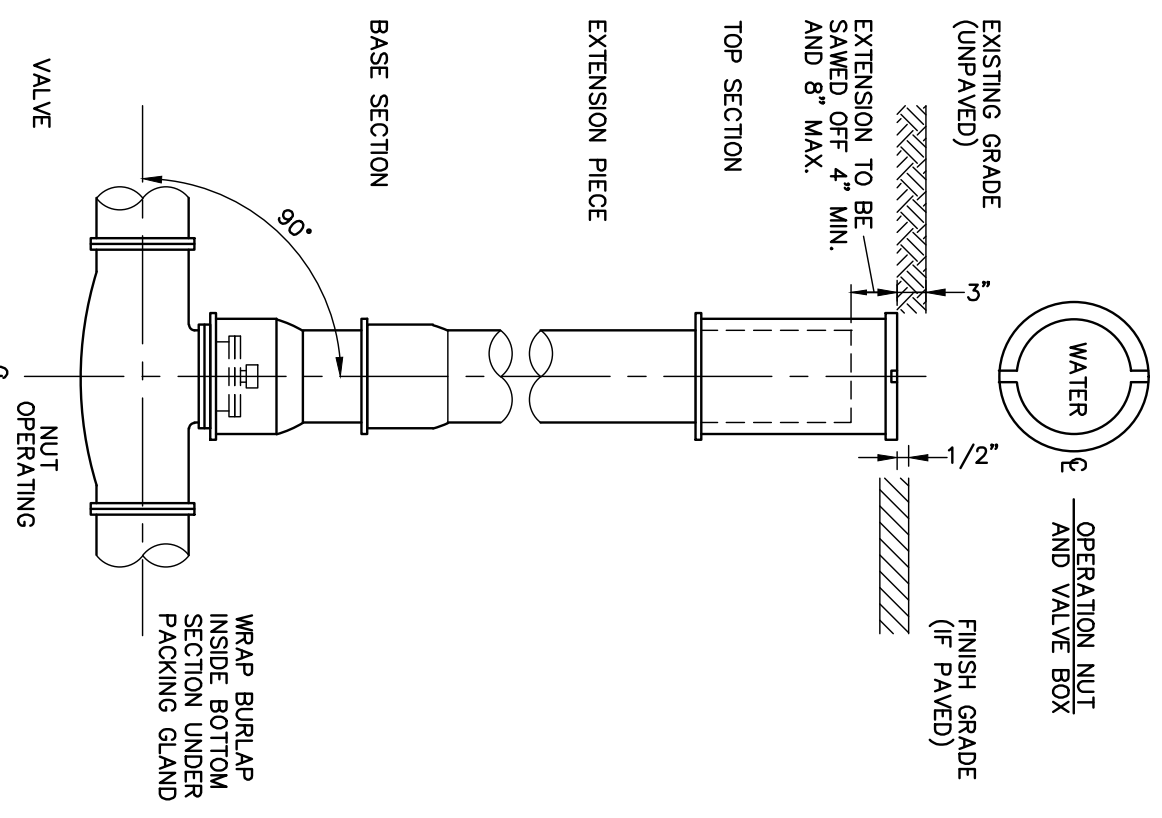
BRICK SIDEWALK DETAIL



MASONRY PLUG DETAIL

MASONRY PLUG @ MAIN

N.T.S.



GATE VALVE WITH VALVE BOX

N.T.S.

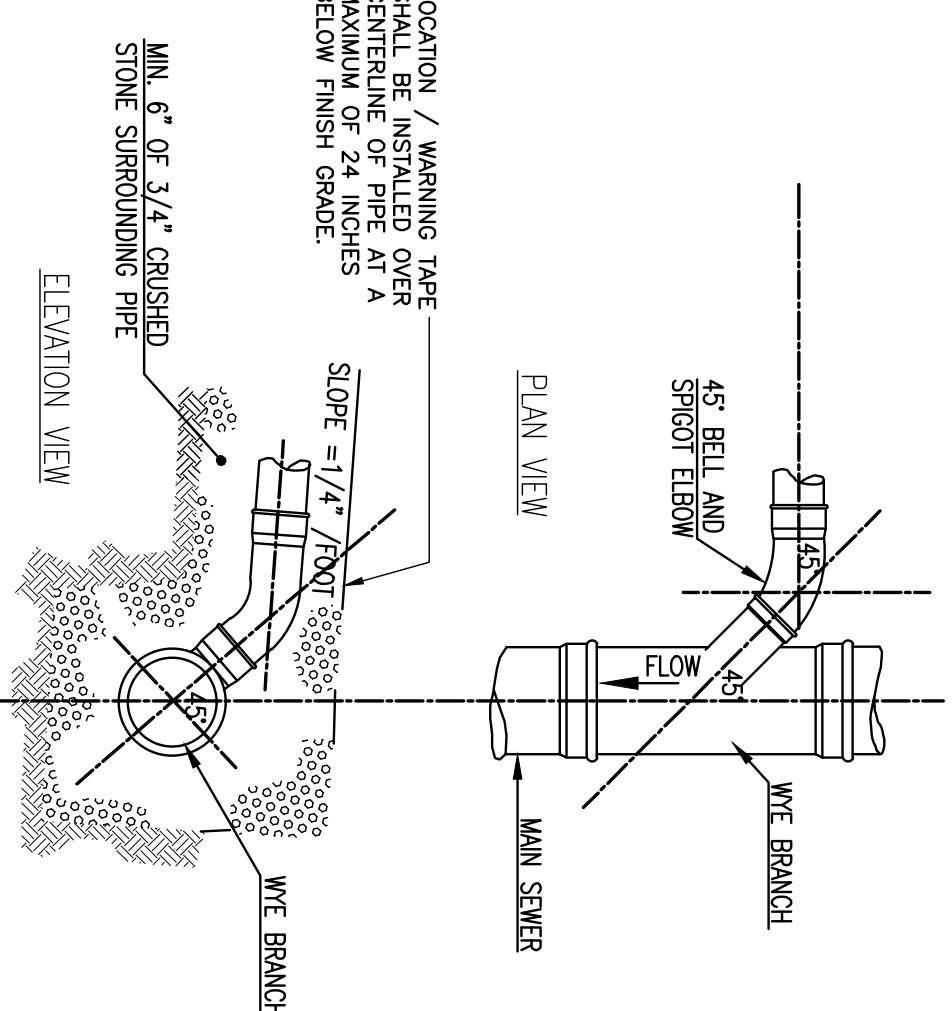
TABLE 1: 4" THRU 10" FITTINGS

SOIL TYPE	TEES		BENDS	
	A	B	A	B
SOFT CLAY	48"	24"	48"	24"
SAND	24"	24"	24"	24"
GRAVEL	24"	18"	24"	18"

- NOTES:
1. CONCRETE FOR ALL THRUST BLOCKS TO STRENGTH, TYPE I GEMENI, 3/4"
 2. WHERE POSSIBLE, UNDISTURBED SOIL WHERE NOT POSSIBLE, PLACE FILL BETWEEN THE THRUST BLOCK AND THE UNDISTURBED SOIL, COMPACTED TO THE STANDARD PROCTOR DENSITY.
 3. WRAP FITTINGS WITH POLYETHYLENE PRIOR TO CONSTRUCTING THRUST WITH CONCRETE.
 4. THRUST BLOCK DIMENSIONS ARE BASED ON 150 PSI.

TYPICAL SEWER LATERAL WYE CONNECTION DETAILS

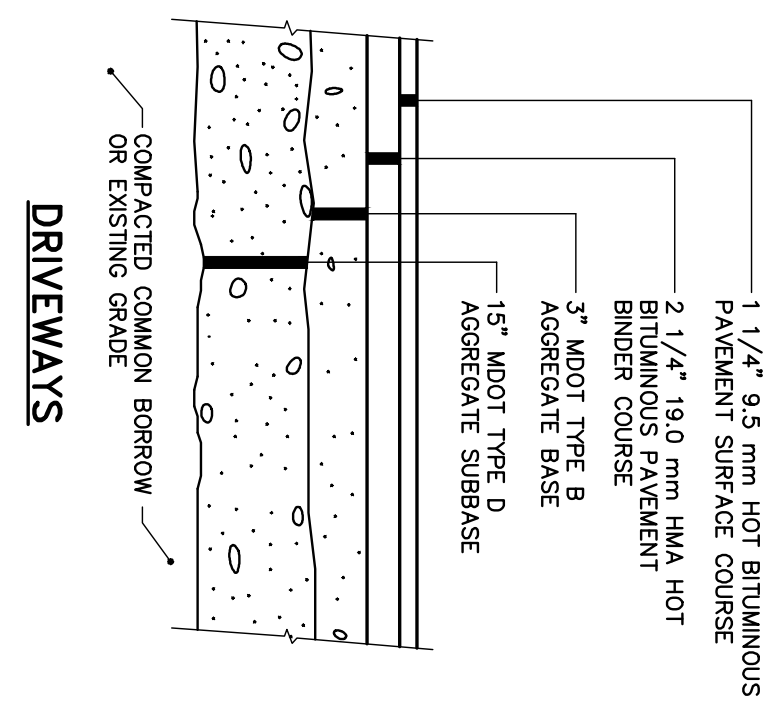
N.T.S.



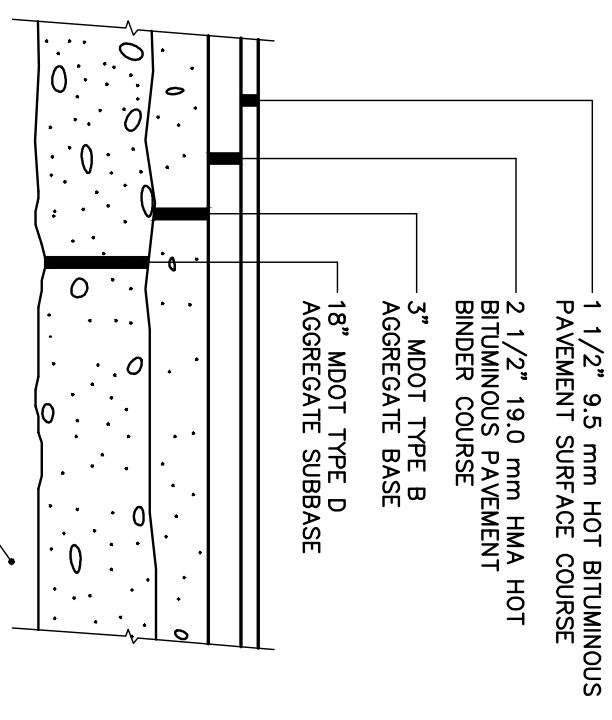
TYPICAL THRUST BLOCK DETAIL

N.T.S.

- NOTES:
1. CONCRETE FOR ALL THRUST BLOCKS TO STRENGTH, TYPE I GEMENI, 3/4"
 2. WHERE POSSIBLE, UNDISTURBED SOIL WHERE NOT POSSIBLE, PLACE FILL BETWEEN THE THRUST BLOCK AND THE UNDISTURBED SOIL, COMPACTED TO THE STANDARD PROCTOR DENSITY.
 3. WRAP FITTINGS WITH POLYETHYLENE PRIOR TO CONSTRUCTING THRUST WITH CONCRETE.
 4. THRUST BLOCK DIMENSIONS ARE BASED ON 150 PSI.



DRIVEWAYS

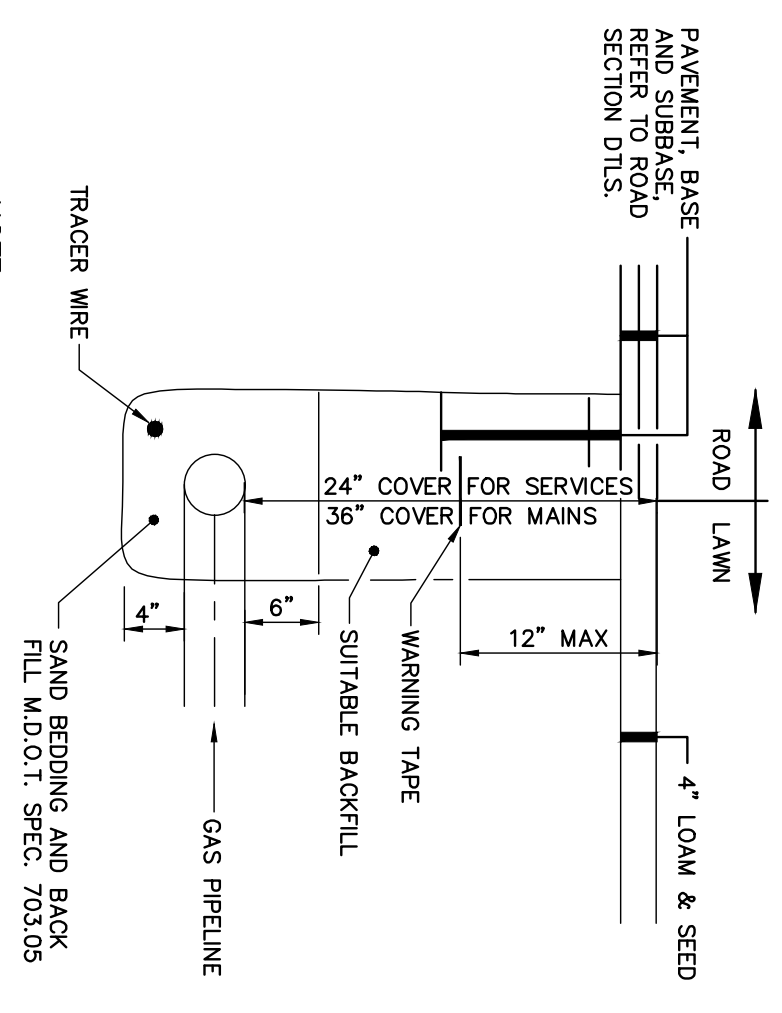


BITUMINOUS PAVEMENT SECTIONS

N.T.S.

NATURAL GAS PIPE

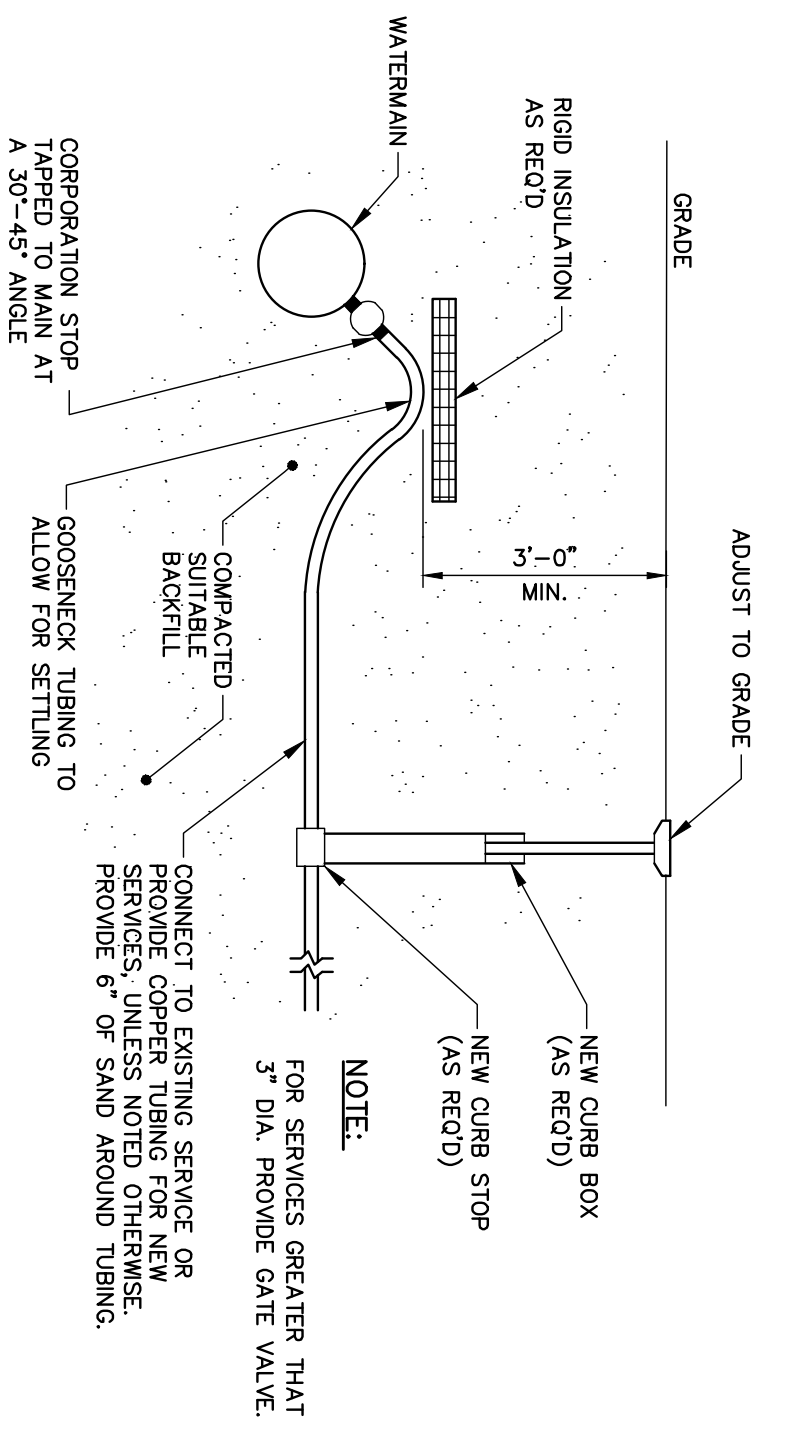
N.T.S.



- NOTE:
- CONTRACTOR SHALL PERFORM EXCAVATION AND PROVIDE BEDDING, BACKFILL AND SURFACE RESTORATION. UNTIL SUCH PROVISIONS, WAYS AND FITTINGS, CONTRACTOR SHALL CORRECTIVE ALL WORK WITH UNTIL, INC.

TYPICAL WATER SERVICE DETAIL

N.T.S.



PRELIMINARY - NOT FOR CONSTRUCTION

C-301