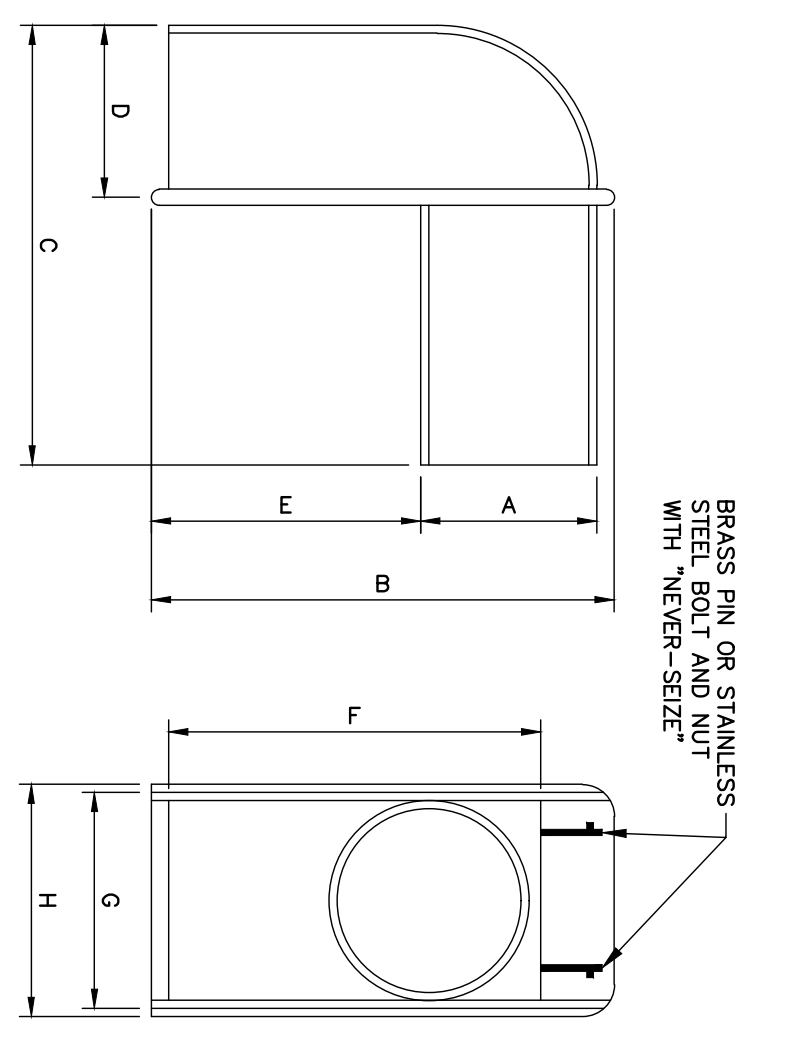


CAST IRON MANHOLE FRAME AND COVER
N.T.S.

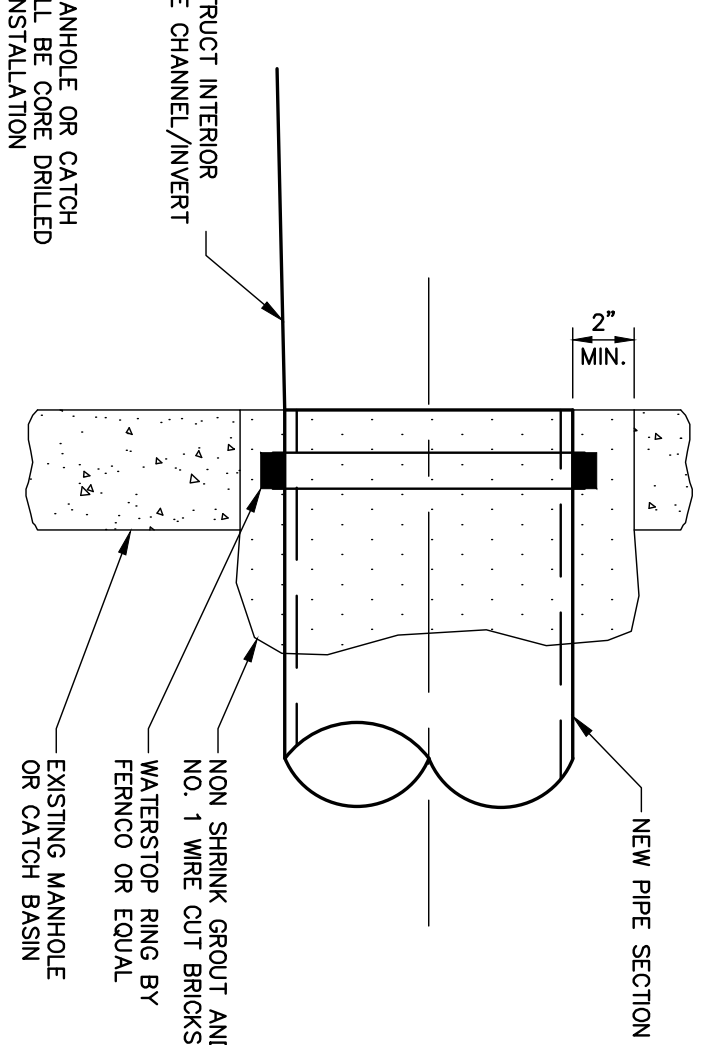
ALL MANHOLE COVERS SHALL BE SOLID AND SHALL HAVE ONE 7/8" DIAMETER DRILLED HOLE, LOCATED 8" FROM THE CENTER OF THE COVER. ALL SANITARY MANHOLE COVERS SHALL HAVE "SEWER" CAST INTO THE COVER. ALL STORMWATER/RAIN MANHOLE COVERS SHALL HAVE "RAIN" CAST INTO THE COVER.

NOTE:
1. CASCO TRAP SHALL BE INSTALLED ON ALL CATCH BASIN OUTLET PIPES, INDENTICAL TO COST OF CATCH BASIN COMPLETELY.
2. BOLT AND NUT REQUIRED WHERE HOOD WILL NOT OPEN.
3. CASCO TRAP SHALL BE INSTALLED ON ALL CATCH BASIN OUTLET PIPES, INDENTICAL TO COST OF CATCH BASIN COMPLETELY.



SIZE	A	B	C	D	E	F	G	H
10"	9 1/2"	16"	16 1/4"	6"	4 1/2"	14 1/8"	11 1/2"	12 3/8"
12"	11 1/2"	17"	22"	8"	3 1/2"	17"	12 1/2"	13 3/8"
15"	14 1/2"	22 1/2"	23"	10 1/4"	5 3/4"	21"	14 1/2"	15 3/4"

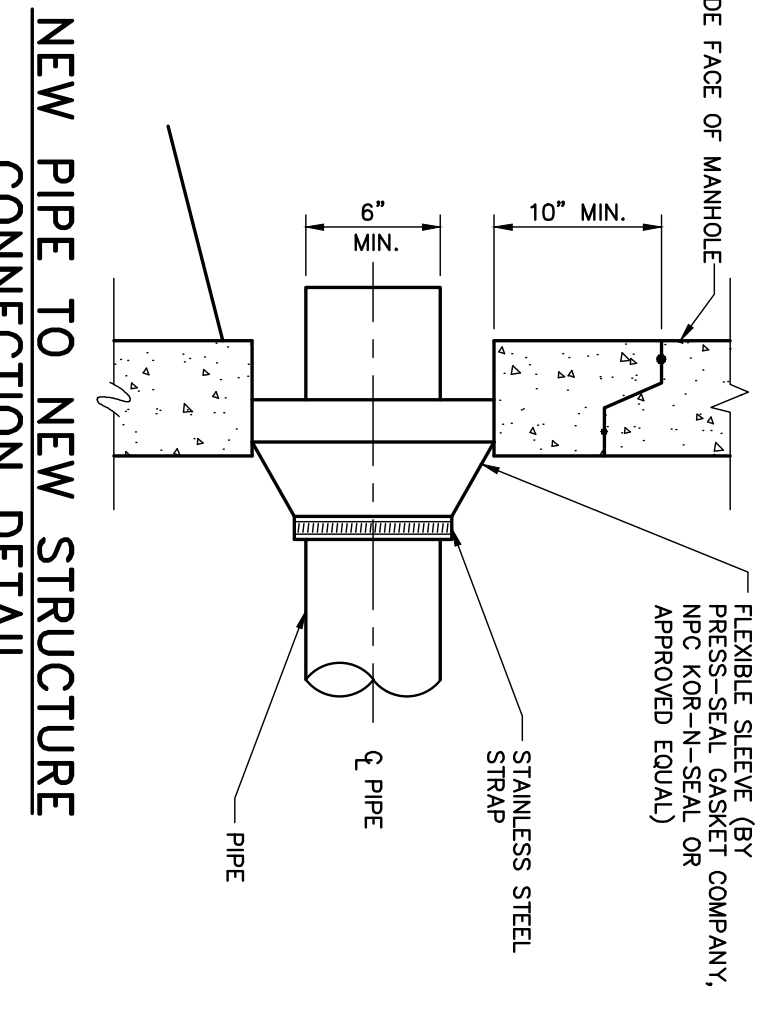
CASCO TRAP DETAIL
N.T.S.



NEW PIPE TO EXISTING STRUCTURE
N.T.S.

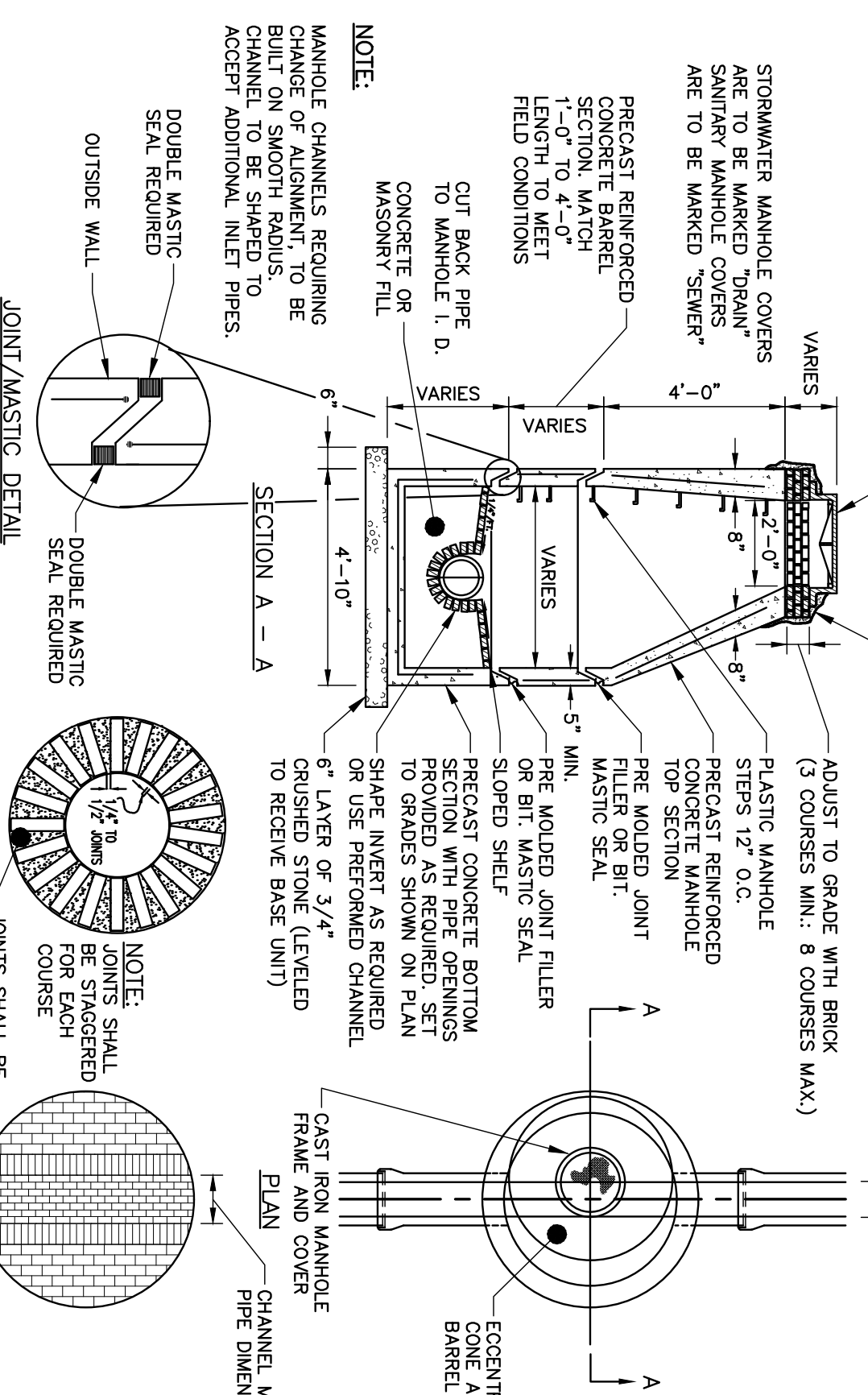
GENERAL NOTES FOR MANHOLES AND CATCH BASINS

1. ALL CONCRETE SHALL BE CLASS "A" AND HAVE A MINIMUM ULTIMATE COMPRESSIVE STRENGTH OF 4000 LBS. PER SQ. INCH AT THE END OF 28 DAYS, UNLESS OTHERWISE NOTED.
2. PRECAST REINFORCED CONE BARREL MANUFACTURED PER ASTM SPEC. C-478.
3. ALL MANHOLES SHALL HAVE A RINGWATER WATERPROOFING SYSTEM. THE SURFACE SHALL BE FINISHED WITH A SMOOTH MORTAR FINISH 3/8" THICK. AFTER THE MORTAR HAS SET, THE SURFACE SHALL BE WATERPROOFED AS REQUIRED BY SUPPLEMENTAL SPECIFICATIONS SECTION 804.
4. CASTINGS SHALL CONFORM TO ASTM DESIGNATION A48-CLASS 35. ALL PARTS OF CASTINGS, EXCEPT FINISHED SURFACE, SHALL RECEIVE A COAT OF COAL TAR PITCH VARNISH OR ASPHALTUM PAINT WHICH SHALL BE SMOOTH AND TOUCH BUT NOT BRITTLE.
5. MANHOLES MAY BE CONSTRUCTED OF MASONRY; PRECAST REINFORCED CONCRETE, OR CAST IN PLACE.
6. CONTRACTOR SHALL SUBMIT ANTICIPATION CALCULATIONS FOR ALL MANHOLE, CATCH BASIN, AND T-BASE STRUCTURES.
7. ALL PRECAST MANHOLES AND CATCH BASINS SHALL BE IDENTIFIED BY STATION OFFSET AND STRUCTURE ID PAINTED ON THE SIDE OF THE STRUCTURE BY THE MANUFACTURER.
8. STORM AND SEWER MANHOLES SHALL HAVE SOLID COVERS WITH ONE DRILLED HOLE.
9. EXISTING MANHOLES, CATCH BASINS, FRAMES, AND COVERS SHALL BE SALVAGED BY THE CONTRACTOR, AND SHALL REMAIN THE PROPERTY OF THE CITY OF PORTLAND.
10. WHEN THE FLOW CHANGES DIRECTION IN A MANHOLE, THE CHANNEL BE FORMED TO ACCEPT ALL INLET PIPES.
11. ON STORM AND SEWER MANHOLES, THE SHELF AND CHANNEL SHALL BE FORMED BY BRICK SET IN CEMENT MORTAR OR BY CASTING IN PLACE. ON SANITARY MANHOLES, THE SHELF SHALL BE EPOXY COATED AND THE SHELF SHALL HAVE A PERMANENT NON-SLID SURFACE.

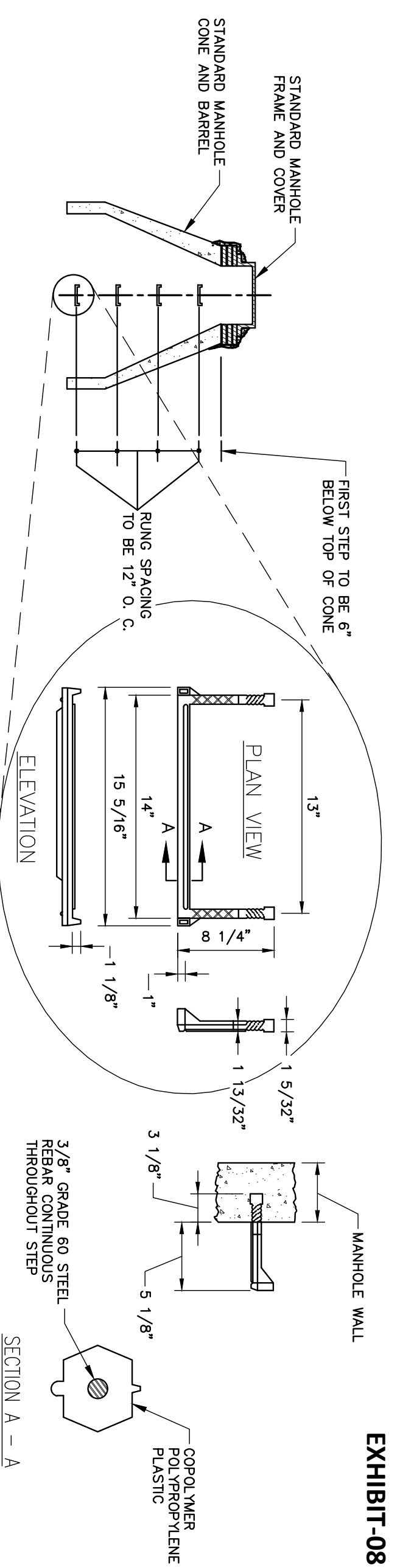


NEW PIPE TO NEW STRUCTURE CONNECTION DETAIL
N.T.S.

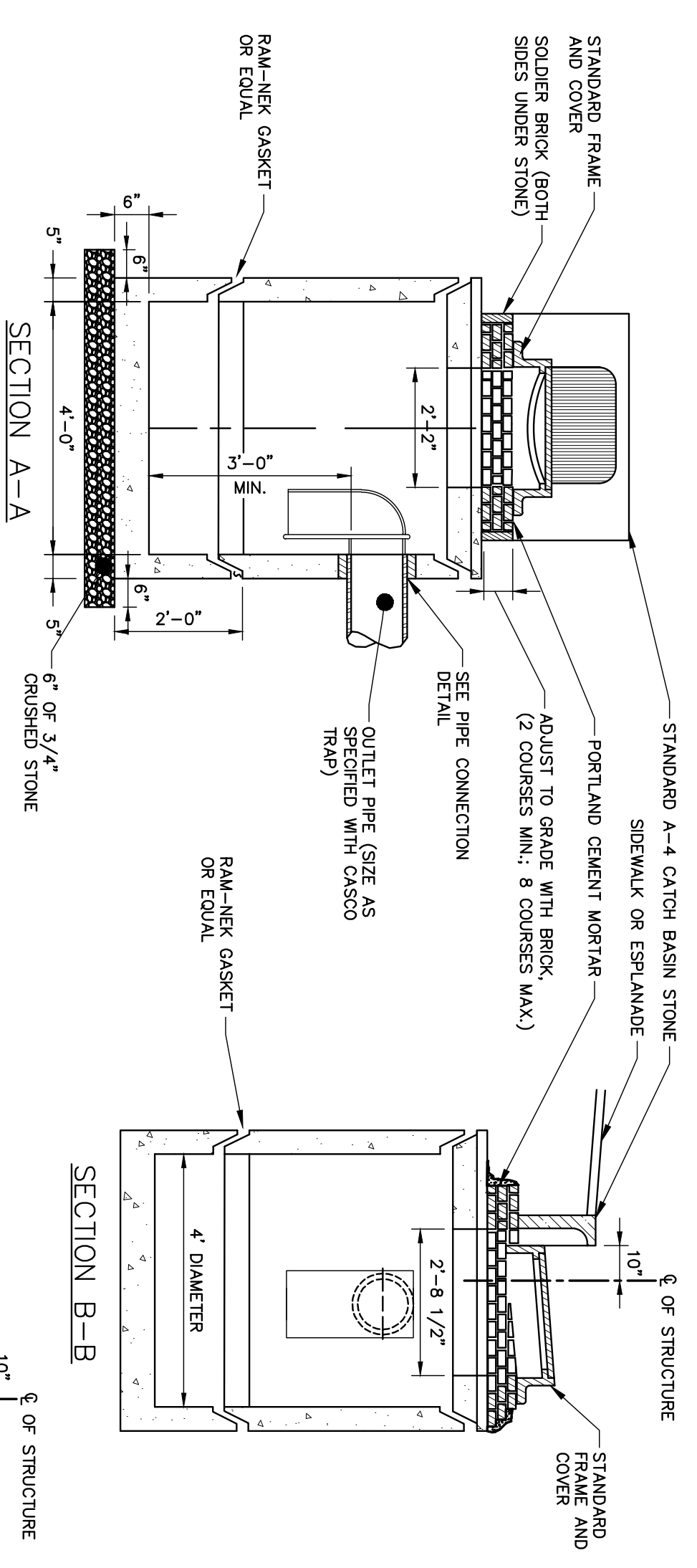
CAST IRON MANHOLE FRAME AND COVER



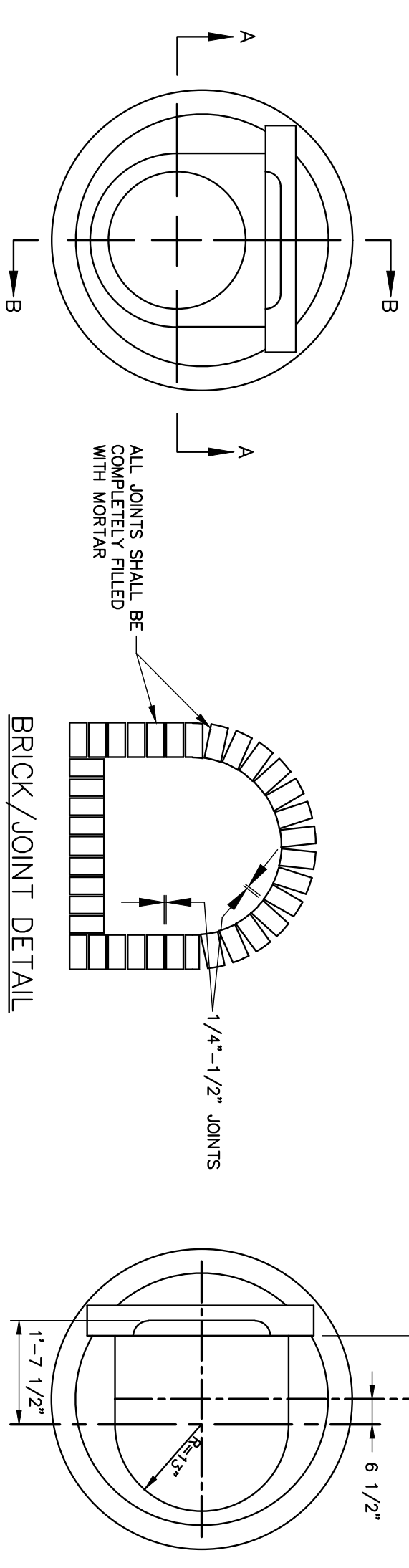
PRECAST CONCRETE MANHOLE
N.T.S.



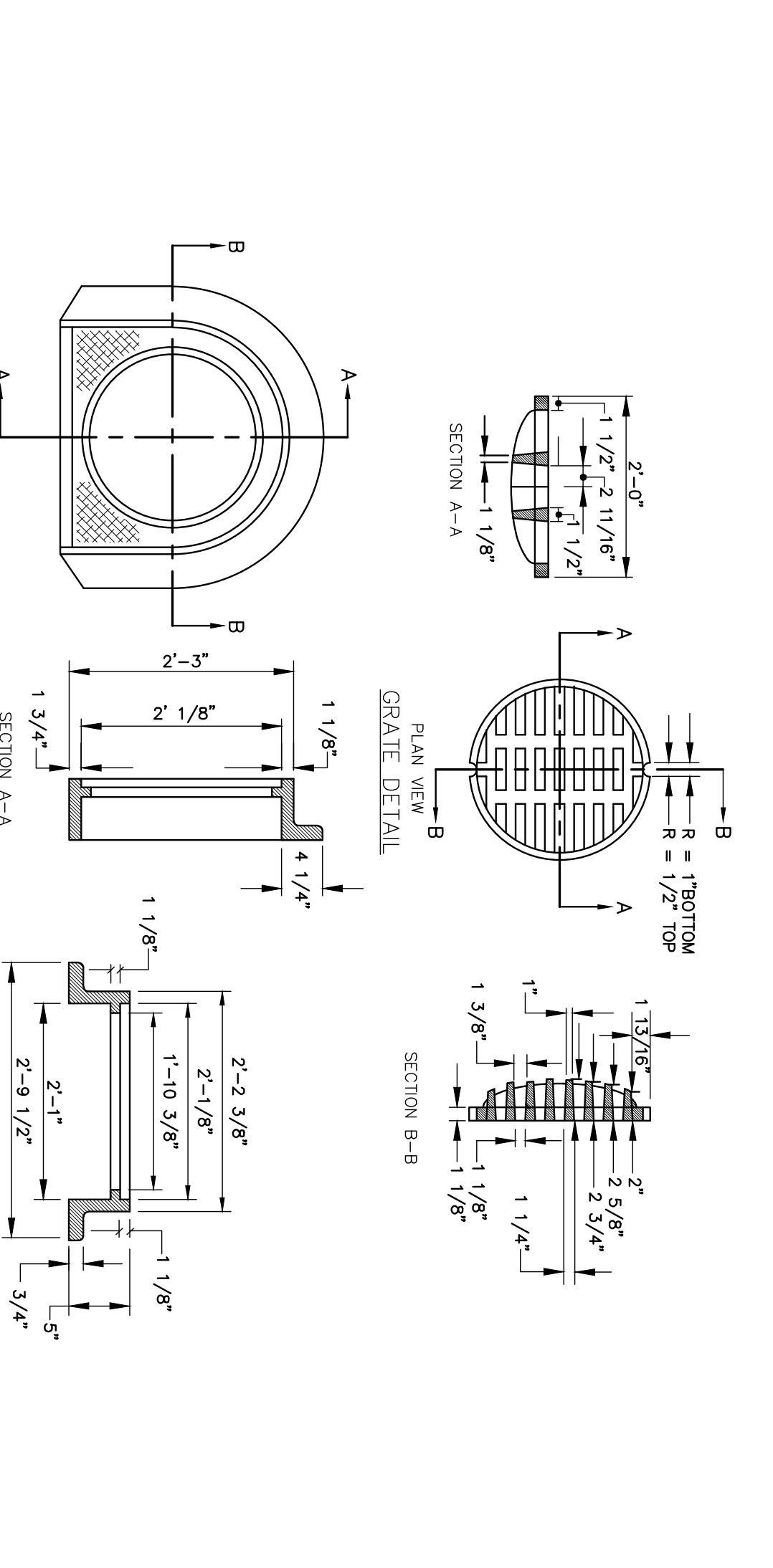
PLASTIC MANHOLE STEPS
N.T.S.



PRECAST CONCRETE CATCH BASIN
N.T.S.



BRICK JOINT DETAIL



CATCH BASIN TYPE "D" - FRAME & COVER DETAIL
N.T.S.

PRELIMINARY - NOT FOR CONSTRUCTION

EXHIBIT-08

41 Hutchins Drive
Portland, Maine 04102
800.426.4262 | www.woodardcurran.com

WOODARD & CURRAN

COMMITMENT & INTEGRITY DRIVE RESULTS

THIS DOCUMENT IS THE PROPERTY OF WOODARD & CURRAN, INC. AND ITS CLIENT. REPRODUCTION OR MODIFICATION WITHOUT WRITTEN PERMISSION IS PROHIBITED.

STATE OF MAINE
DENISE CAMERON
No. 11279

REV	DESCRIPTION	DATE
1	FINAL SITE PLAN APPLICATION SUBMISSION	9/28/2012

DESIGNED BY: MDLM
CHECKED BY: DMC
DRAWN BY: JBC
22586901-D00A.DWG

CIVIL DETAILS - 1

COW PLAZA HOTEL, LLC
100 COMMERCIAL STREET, SUITE 306
PORTLAND, MAINE, C/O TIM SOLEY

CANAL PLAZA HOTEL

JOB NO: 22586901
DATE: OCTOBER 2012
SCALE: AS NOTED
SHEET: 5 OF 9

C-300