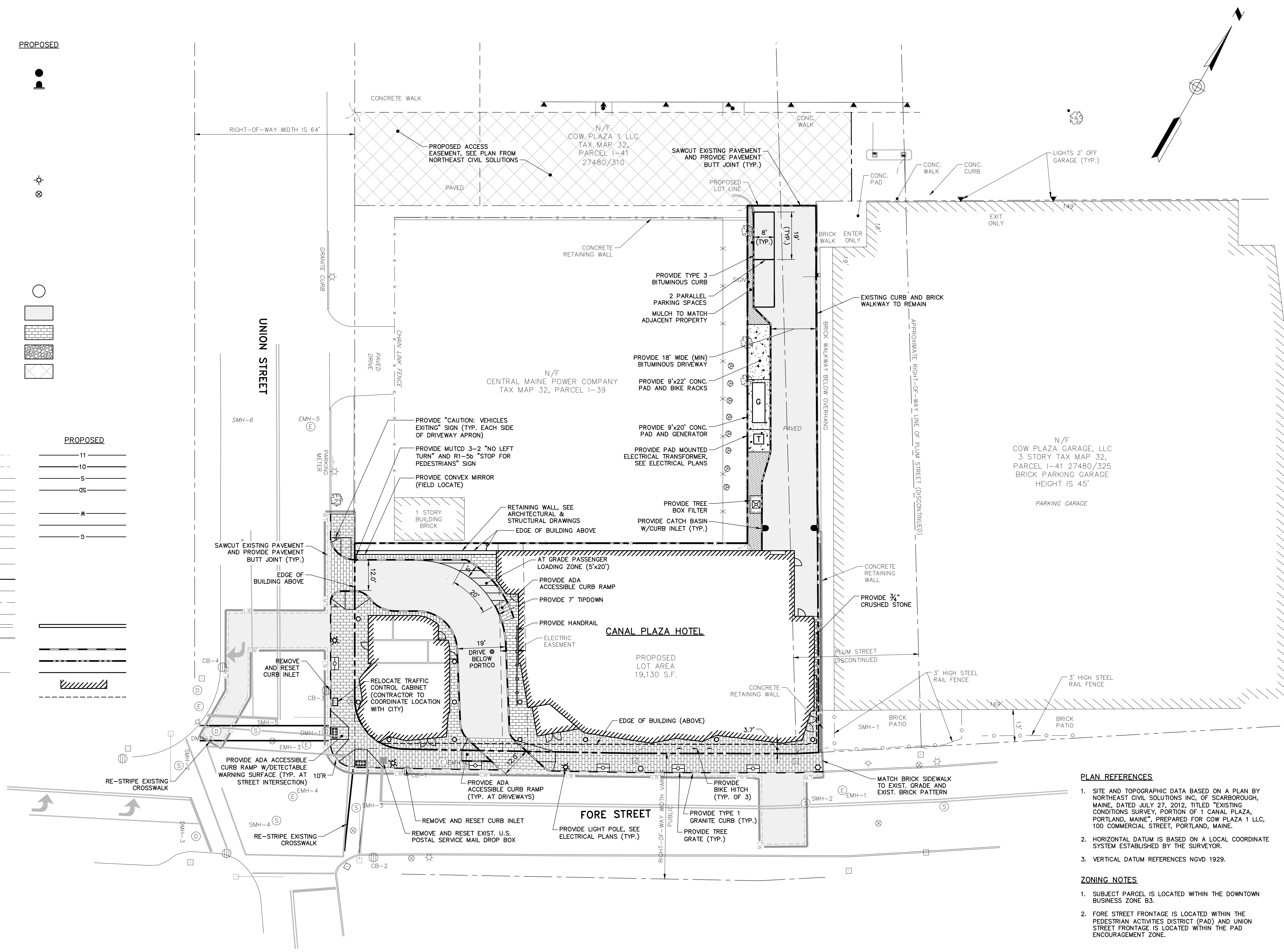


SYMBOLS

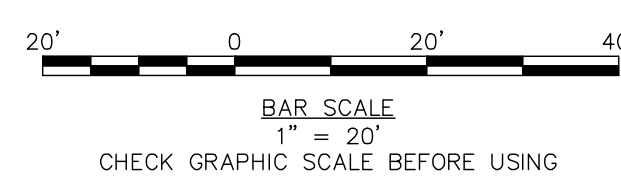
DESCRIPTION	EXISTING	PROPOSED
SANITARY SEWER MANHOLE	(S)	(S)
STORM DRAIN MANHOLE	(D)	(D)
CATCH BASIN	(CB)	(CB)
ELECTRICAL MANHOLE	(E)	(E)
COMMUNICATIONS MANHOLE	(C)	(C)
CABLE MANHOLE	(CM)	(CM)
UTILITY POLE W/GUY	(UG)	(UG)
UTILITY POLE	(U)	(U)
UTILITY POLE W/LIGHT	(UL)	(UL)
LIGHT POLE	(L)	(L)
WATER GATE	(WG)	(WG)
WATER SHUT OFF	(WSO)	(WSO)
HYDRANT	(H)	(H)
SIGN	(S)	(S)
DECIDUOUS TREE	(DT)	(DT)
IRON PIN (FOUND)	(IP)	(IP)
MONUMENTS (FOUND)	(M)	(M)
TEST PIT	(TP)	(TP)
BITUMINOUS PAVEMENT	(BP)	(BP)
BRICK SIDEWALK	(BS)	(BS)
CRUSHED STONE	(CS)	(CS)
EASEMENT	(E)	(E)

LINE TYPES

DESCRIPTION	EXISTING	PROPOSED
CONTOUR (1' INTERVAL)	---11---	---11---
CONTOUR (INDEX)	---10---	---10---
SANITARY SEWER	---S---	---S---
STORM DRAIN	---OS---	---OS---
UNDERDRAIN	---OD---	---OD---
WATER MAIN	---M---	---M---
UNDERGROUND ELECTRIC	---E---	---E---
GAS LINE	---G---	---G---
OVERHEAD ELECTRIC	---OE---	---OE---
UNDERGROUND ELECTRICAL /COMMUNICATIONS/CABLE	---COMM---	---COMM---
PROPERTY LINE	---	---
RIGHT OF WAY	---	---
EASEMENT	---	---
FENCE	---	---
RETAINING WALL	---	---
CURB	---	---
TYPE 1 GRANITE CURB	---	---
BITUMINOUS CURB	---	---
EDGE OF PAVEMENT	---	---
BUILDING OUTLINE	---	---
SAWCUT	---	---



- PLAN REFERENCES**
- SITE AND TOPOGRAPHIC DATA BASED ON A PLAN BY NORTHEAST CIVIL SOLUTIONS INC. OF SCARBOROUGH, MAINE, DATED JULY 27, 2012, TITLED "EXISTING CONDITIONS SURVEY, PORTION OF 1 CANAL PLAZA, PORTLAND, MAINE", PREPARED FOR COW PLAZA 1 LLC, 100 COMMERCIAL STREET, PORTLAND, MAINE.
 - HORIZONTAL DATUM IS BASED ON A LOCAL COORDINATE SYSTEM ESTABLISHED BY THE SURVEYOR.
 - VERTICAL DATUM REFERENCES NGVD 1929.
- ZONING NOTES**
- SUBJECT PARCEL IS LOCATED WITHIN THE DOWNTOWN BUSINESS ZONE B3.
 - FORE STREET FRONTAGE IS LOCATED WITHIN THE PEDESTRIAN ACTIVITIES DISTRICT (PAD) AND UNION STREET FRONTAGE IS LOCATED WITHIN THE PAD ENCOURAGEMENT ZONE.



PRELIMINARY - NOT FOR CONSTRUCTION

41 Hutchins Drive
Portland, Maine 04102
800.426.4262 | www.woodardcurran.com

WOODARD & CURRAN

COMMITMENT & INTEGRITY DRIVE RESULTS

THIS DOCUMENT IS THE PROPERTY OF WOODARD & CURRAN, INC. AND ITS CLIENT. REPRODUCTION OR MODIFICATION WITHOUT WRITTEN PERMISSION IS PROHIBITED.

STATE OF MAINE
DENISE CAMERON
No. 11279
Professional Seal

9/21/2012

REVISION	DESCRIPTION	DATE	CHECKED BY	DESIGNED BY	DRAWN BY
1	RESPONSE TO CITY REVIEW COMMENTS	9/21/2012	DLC	MDLM	JBC

SITE PLAN

COW PLAZA HOTEL, LLC
100 COMMERCIAL STREET, SUITE 306
PORTLAND, MAINE, C/O TIM SOLEY

CANAL PLAZA HOTEL

JOB NO.: 225869.01
DATE: AUGUST 2012
SCALE: 1" = 20'
SHEET: 2 OF 1

C-201

Portland\Projects\225869 Canal 5 - Fore & Union Hotel\wp Drawings\22586901-C200A.dwg, Sep 21, 2012 - 1:44pm