

(1) SINGLE-FACE ILLUMINATED WALL SIGN

"LOGO" CLEAR ACRYLIC 3/4" THK. (INFILLED) CIMENTED TO BACKING FROM 3/16" THK. WHITE PIGM. #7328 ACRYLIC BACKED TO ALUM. FACE WITH VINYL APPLIED ON FIRST SURFACE.

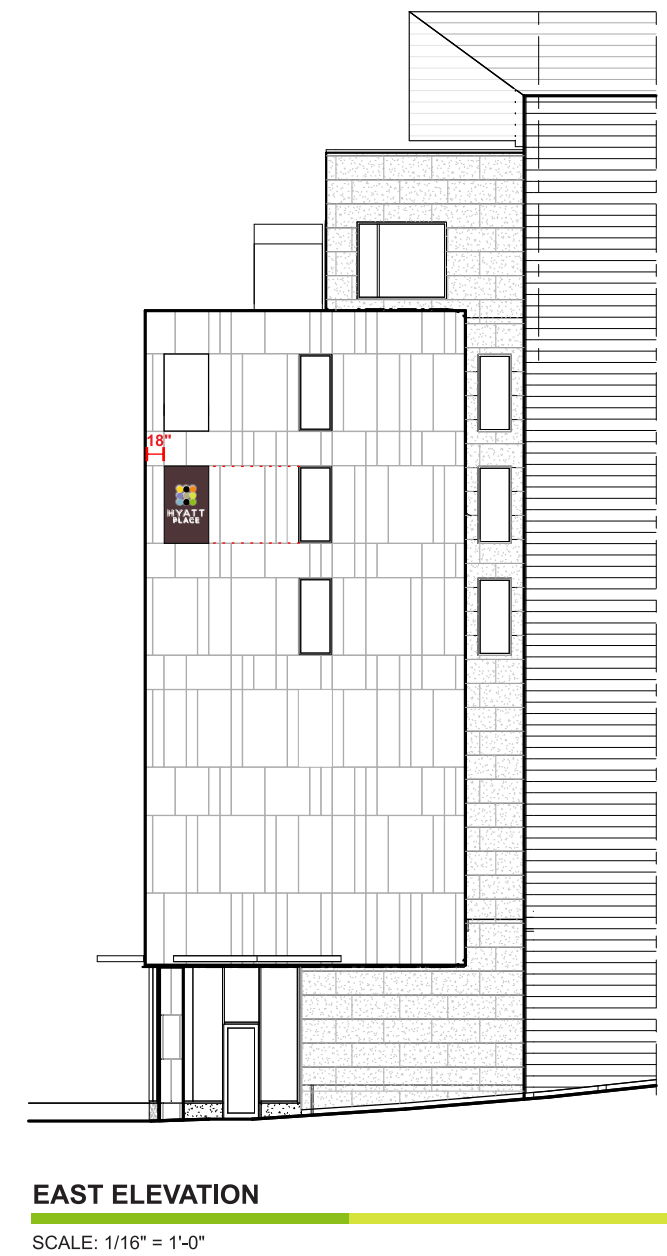
"HYATT PLACE" WHITE PIGM. #7328, 1/2" THK. ACRYLIC INFILLED INTO ALUM. FACE.

1/8" THK. ALUM. FACE WELDED TO ALUM. ANGLE AND FILLER FAB. FROM ALUM. EXTRUSION PAINTED BROWN.

ILLUMINATED WITH WHITE LED.

COLOR DETAIL

	BROWN : AKZO-412-H2 (PAINT)
3M	
	PISTACHIO : 3630-149
ARLON"	
	BLACK : ARLON SERIES 2500-22
	YELLOW : ARLON SERIES 2500-2244A
	LAVENDER : SERIES 2500-3148
	BLUE : SERIES 2500-2529
	ORANGE : SERIES 2500-84
	LIME GREEN : SERIES 2100-948
	SPRING GREEN : SERIES 2500-2498 LIGHT BLUE & SERIES 2500-2202 LIGHT GREEN (1 LAYER OF EACH) LIGHT BLUE ALWAYS APPLIED AS A DIFFUSER FOR THE LOGO



Avis / Notice

Ce dessin, incluant la conception graphique et les détails techniques est la seule propriété d'Enseignes Transworld cie et ne doit être reproduit, copié ou utilisé pour fabrication sans l'autorisation préalable d'Enseignes Transworld cie.

This drawing, including graphic layout and technical detail is the property of Transworld Signs Co and cannot be reproduced, copied or used without prior authorization from Transworld Signs Co.
Licence RBQ: 8270-5815-47 titulaire d'une licence délivrée en vertu de la loi sur le bâtiment du Québec.

Client



Adr./Add. : **433 Fore Street, Portland, ME**

Date : 2013 / 05 / 08 Rep : S. Gabrisch #Des/Draw# : **240175m2**

Des. : CD Tech. : Ref. # : Identification Program / 2012

Révision / Revision

#	Description	Par/By	Date
1	Specifications	CD	2013/05/21
2	Dimensions	CD	2013/08/30
3	Location of sign	CK	2013/11/07