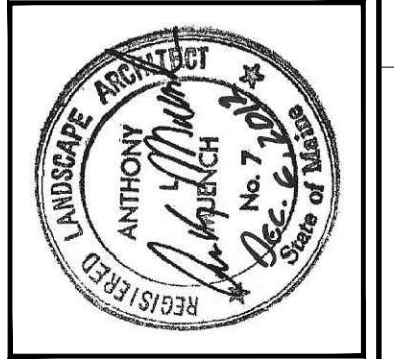


LANDSCAPE ARCHITECT

Anthony Muench Landscape Architect

94 Commercial Street Portland, Maine 04101 207.741.6421

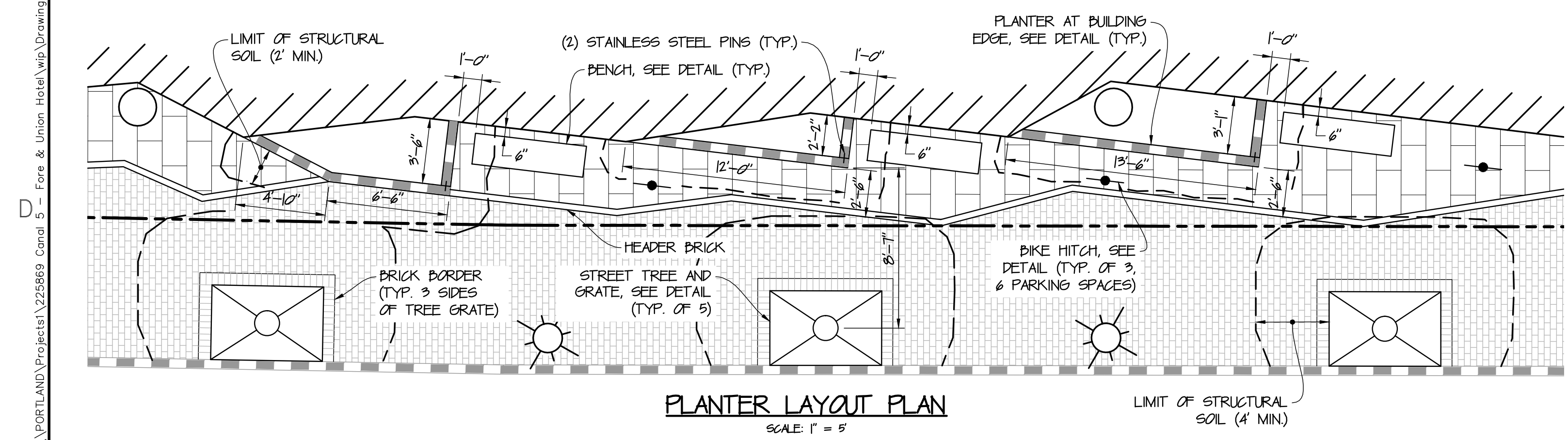
THIS DOCUMENT IS THE PROPERTY OF MUECHER & CURRAN, INC. AND ITS CLIENT. REPRODUCTION OR MODIFICATION WITHOUT WRITTEN PERMISSION IS PROHIBITED.



NO.	DESCRIPTION	DATE
1	ISSUED FOR CONSTRUCTION	11/16/2012
2	APPENDUM 2	12/06/2012

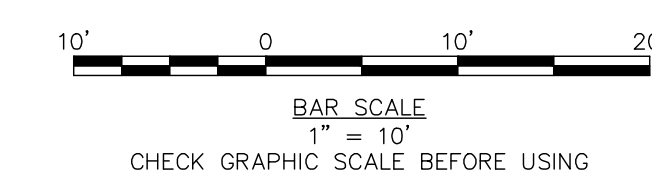
DESIGNED BY: AM
 CHECKED BY: AM
 DRAWN BY: JBC

LANDSCAPING AND SITE AMENITIES PLAN



KEY	COMMON & BOTANICAL NAME	SIZE	ROOT	QTY.	NOTES
A	GREEN PILLAR PIN OAK Q. PALUSTRIS 'GREEN PILLAR'	3" GAL	B&D	5	7 CLEAR TO BRANCHES
B	NORTHERN BAYBERRY M. PENNSYLVANICA	24" HT.	CONT.	6	MIN 3 CANES
C	BLACKHAW VIBURNUM V. FRUNIFOLIUM	3 1/2" HT.	CONT.	1	MIN 3 CANES

- ### PLANTING NOTES
- THE CONTRACTOR SHALL SUPPLY ALL PLANTS IN QUANTITIES SUFFICIENT TO COMPLETE THE WORK SHOWN ON PLAN. ANY DISCREPANCIES BETWEEN QUANTITIES SHOWN ON PLANT LIST AND THOSE REQUIRED BY THIS DRAWING SHALL NOT ENTITLE CONTRACTOR TO ADDITIONAL REMUNERATION.
 - ANY PLANT SUBSTITUTIONS MUST BE APPROVED BY THE OWNER AND THE CITY OF PORTLAND.
 - ANY TREE OR SHRUB WHICH COMES OVER OR UNDER ANY UTILITY SHALL BE RELOCATED ON THE SITE BY THE LANDSCAPE ARCHITECT.
 - ALL TREES AND SHRUBS SHALL BE PLACED IN THE DESIGNATED AREAS AS SHOWN ON THE PLAN AND BEFORE PLANTING SHALL BE APPROVED BY THE LANDSCAPE ARCHITECT.
 - THE CONTRACTOR SHALL RELOCATE ANY TREE OR SHRUB AS DIRECTED BY THE LANDSCAPE ARCHITECT.
 - ALL PLANT MATERIAL INSTALLED SHALL MEET THE SPECIFICATIONS OF THE AMERICAN STANDARD FOR NURSERY STOCK (LATEST EDITION) AS SET FORTH BY THE AMERICAN ASSOCIATION OF NURSERYMEN.
 - THE LANDSCAPE CONTRACTOR SHALL REPLACE OR REPAIR TO ORIGINAL CONDITION ANY AND ALL UTILITIES, PAVING, CURBING, ETC., DAMAGED AS A RESULT OF THEIR OPERATIONS AT NO ADDITIONAL COST TO THE OWNER.



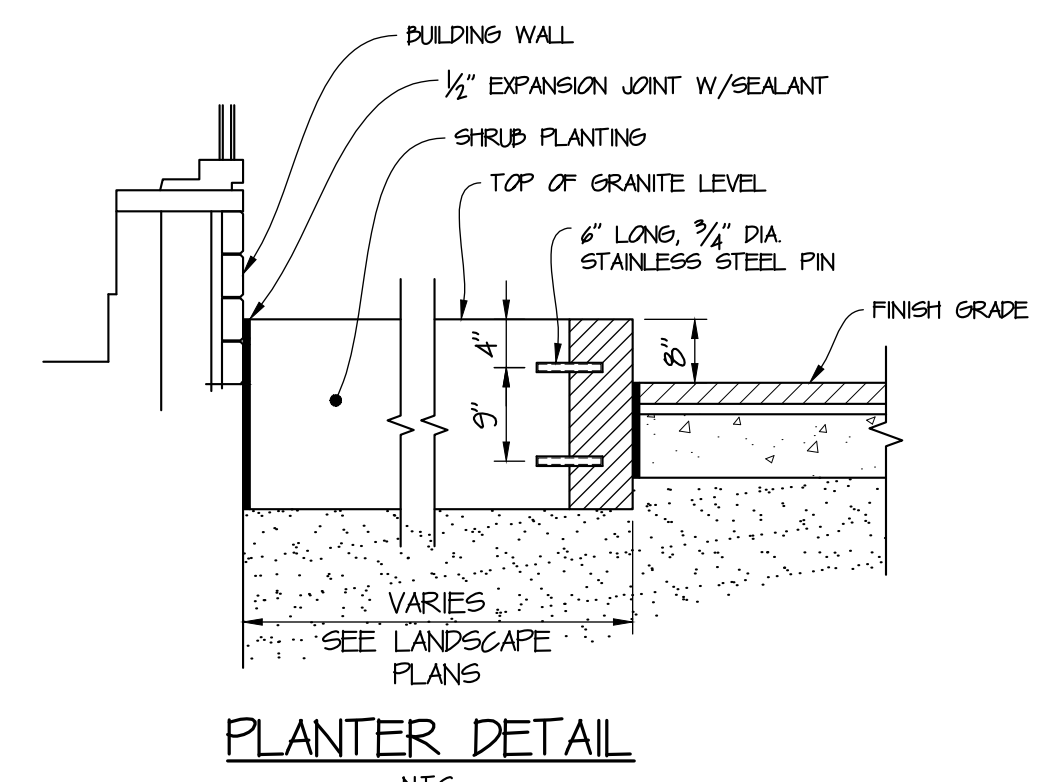
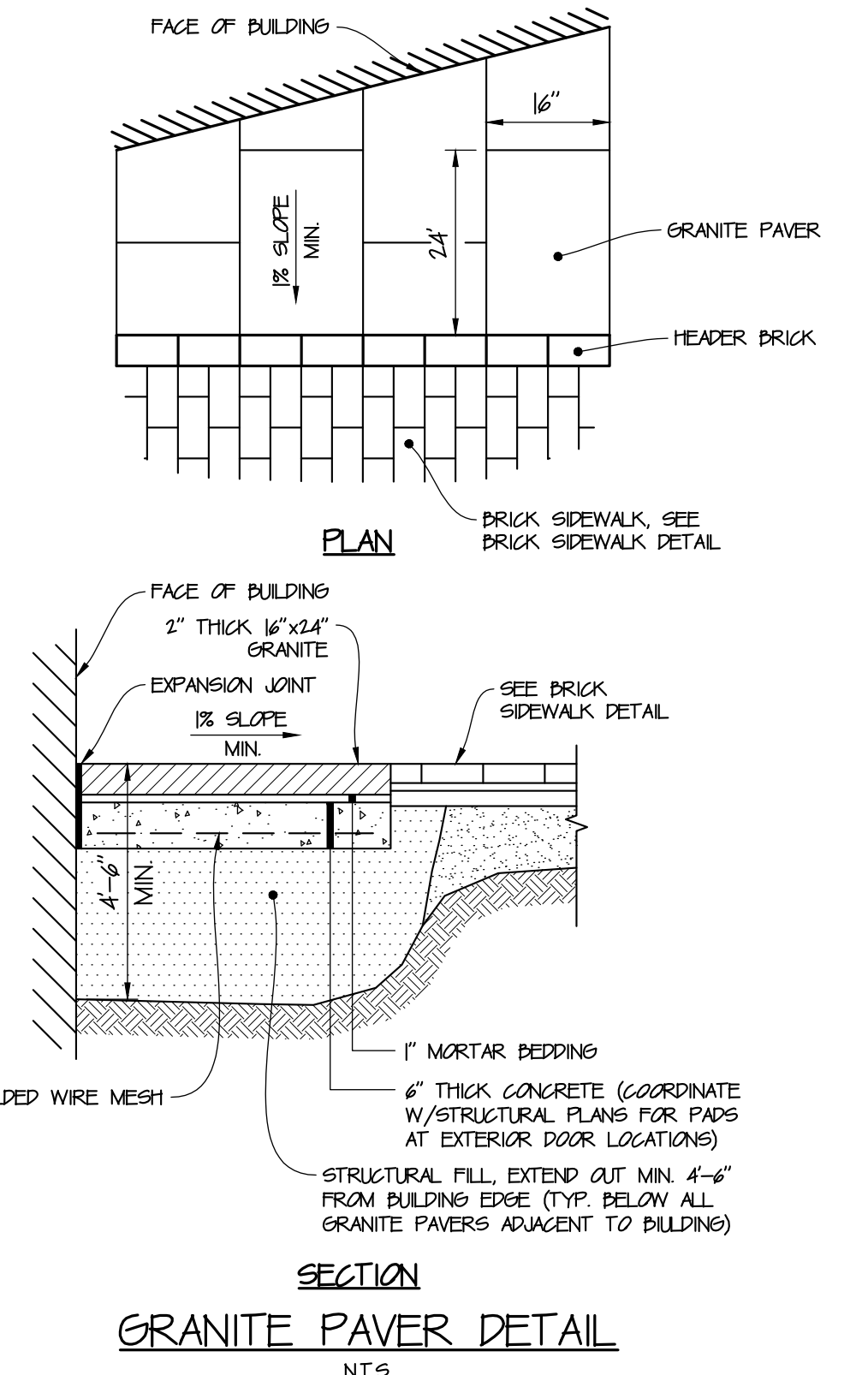
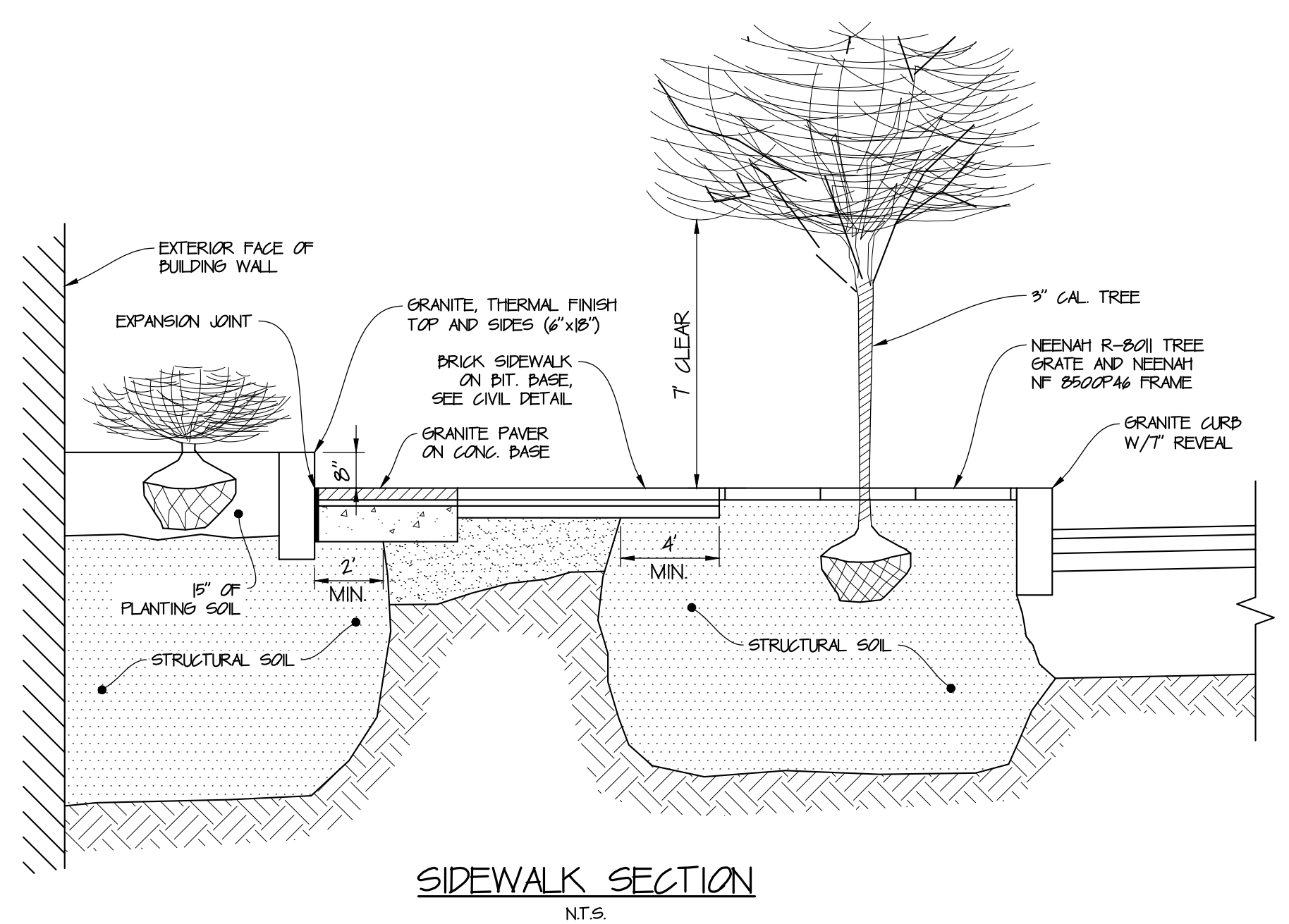
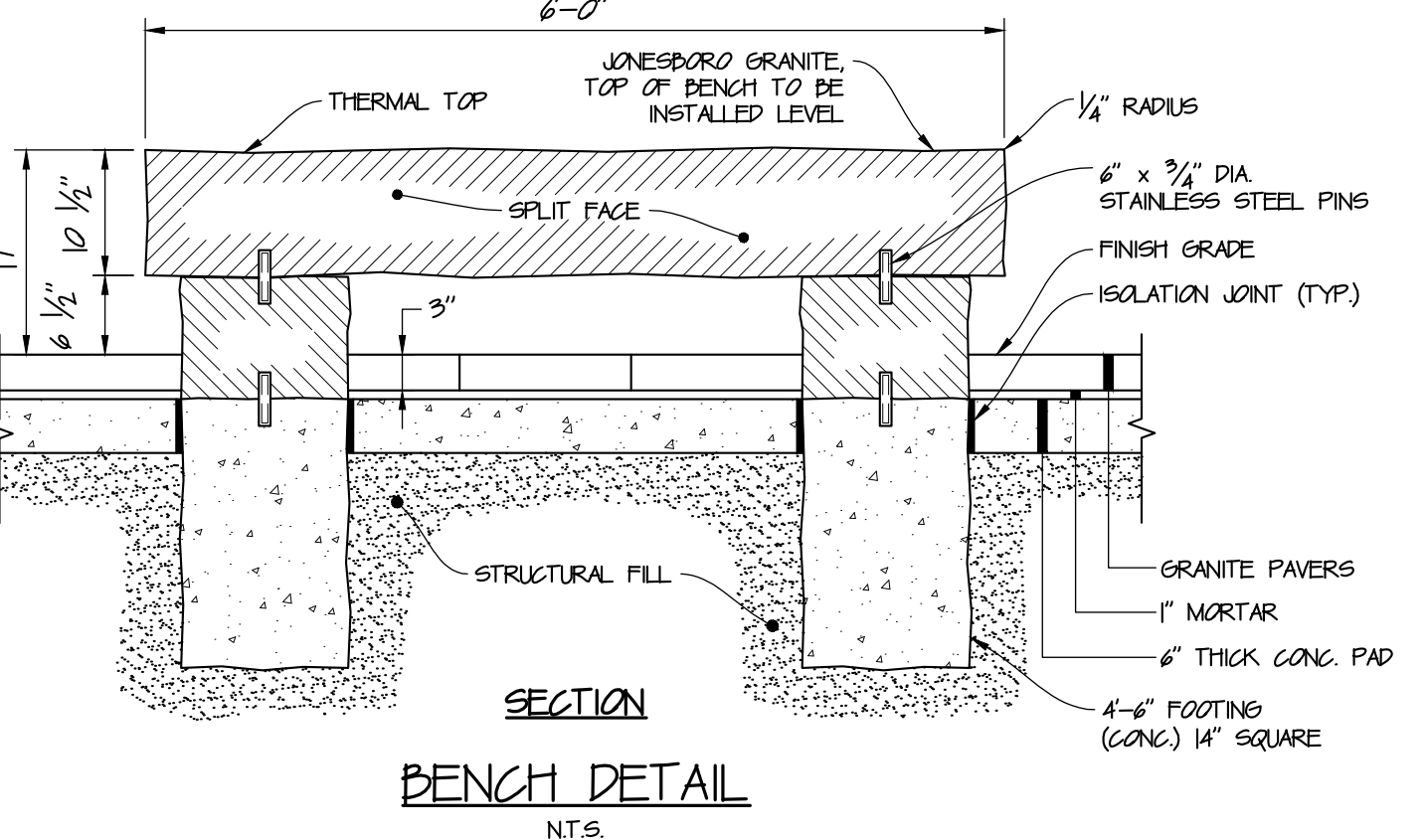
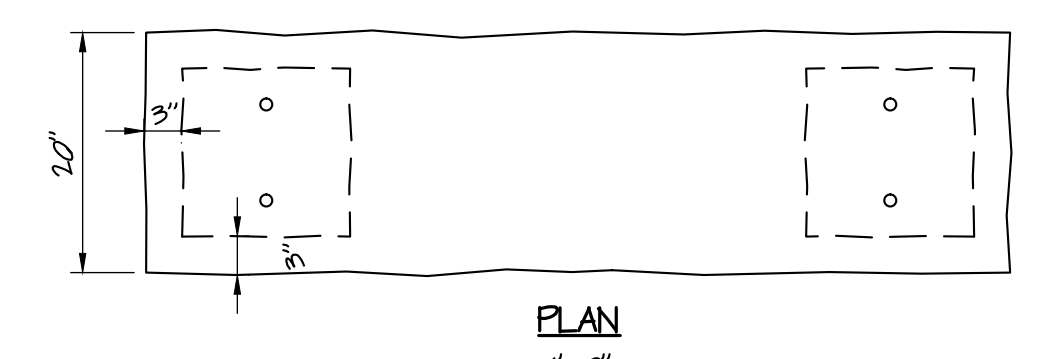
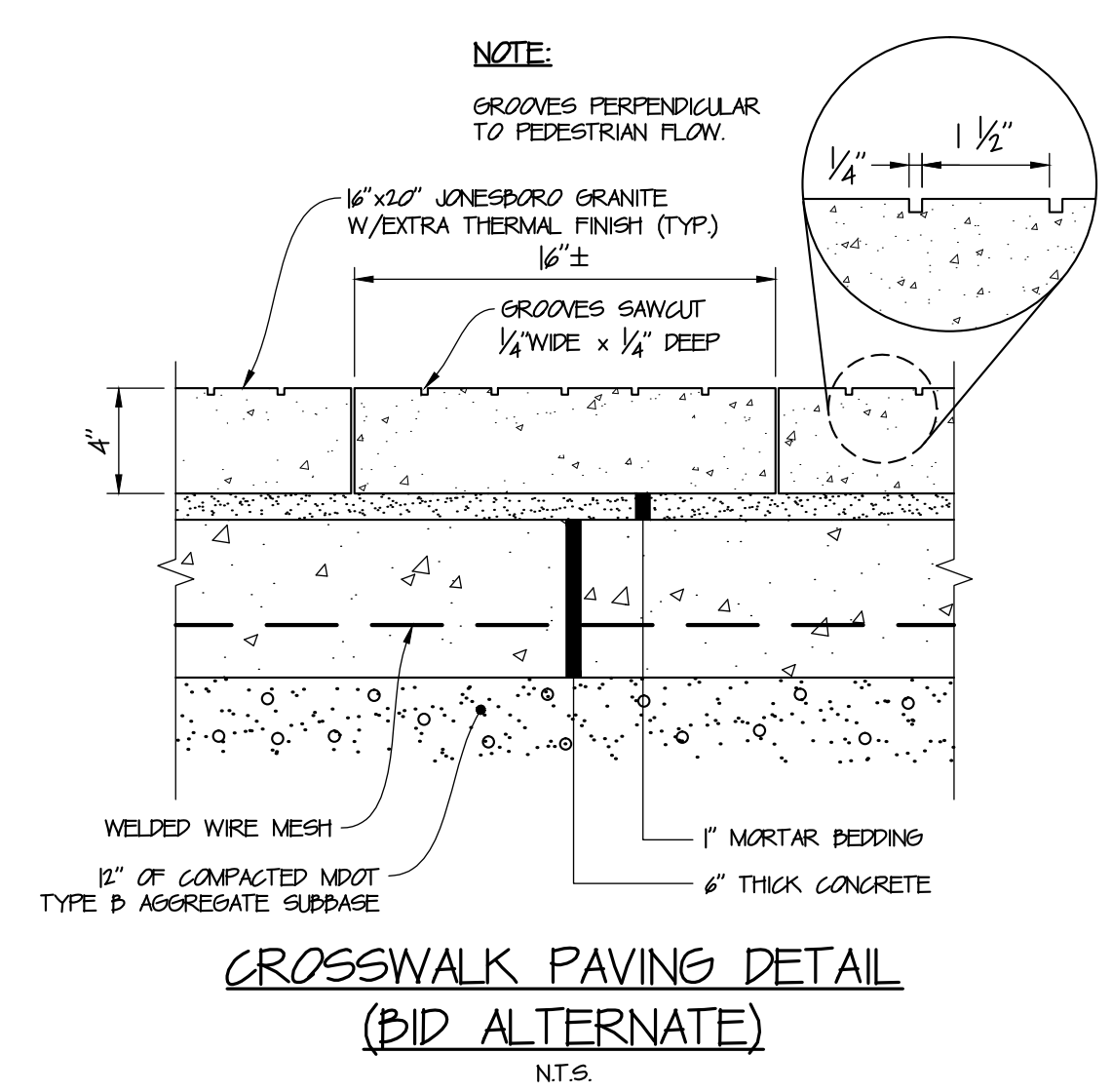
JOB NO.: 225869.01
 DATE: NOVEMBER 2012
 SCALE: 1" = 10'
 SHEET: 11 OF 12

LANDSCAPING AND SITE AMENITIES PLAN

100 COMMERCIAL STREET, SUITE 306
 PORTLAND, MAINE, C/O TIM SOLEY

HYATT PLACE
 PORTLAND - OLD PORT
 433 FORE STREET
 PORTLAND, ME

L-100



Tools Needed for Installation

- Tape Measure
- Marker or Pencil
- Masonry Drill Bit
- Drill (Hammer drill recommended)
- Hammer
- Wrench 9/16"
- Level
- Washers (for leveling if necessary)

Recommended Base Materials:

Solid concrete is the best base material for installation. Ask your Dero Rack representative which anchor is appropriate for your application to ensure the proper anchors are shipped with your rack. Be sure nothing is underneath the base material that could be damaged by drilling.

Installation:

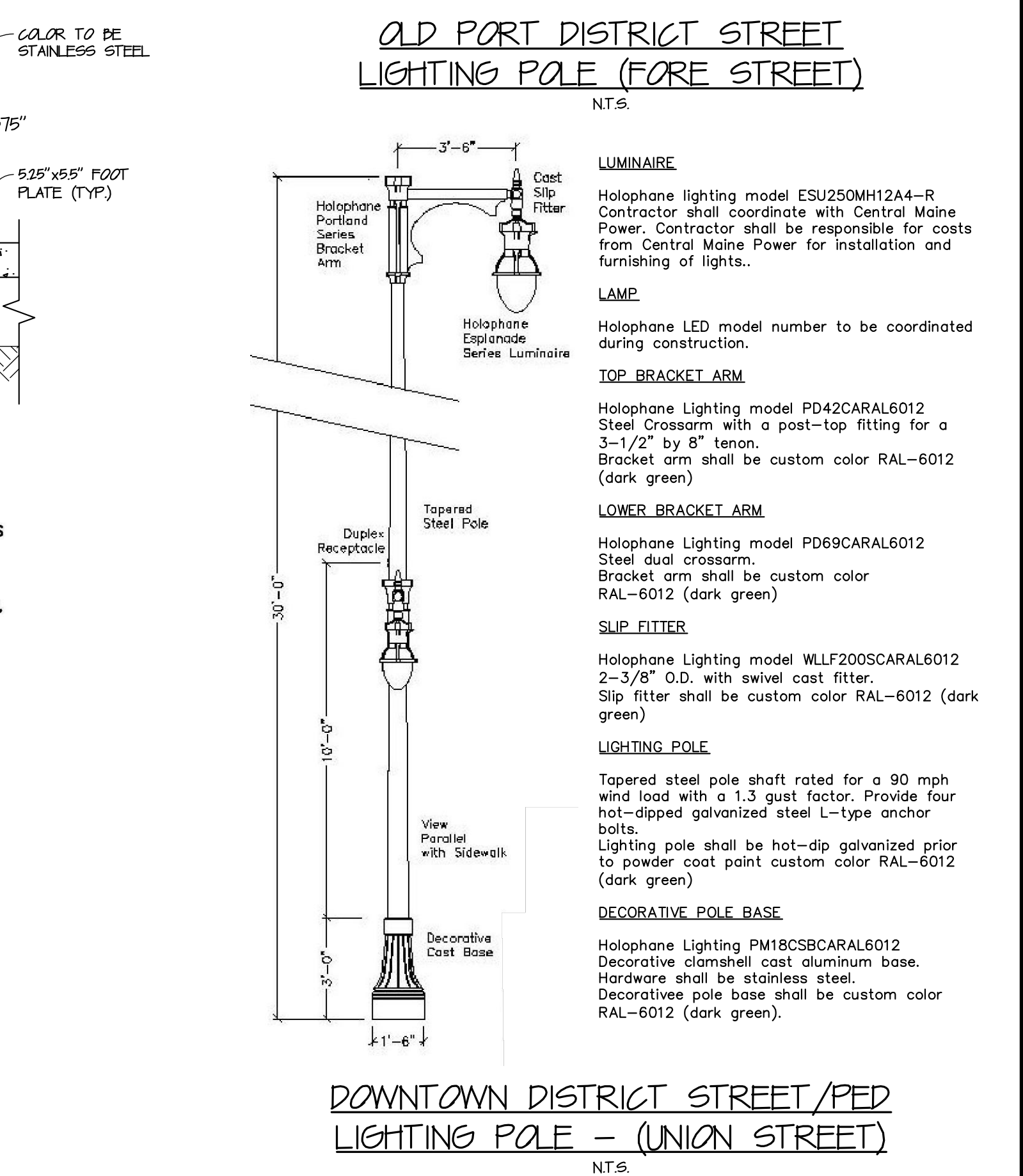
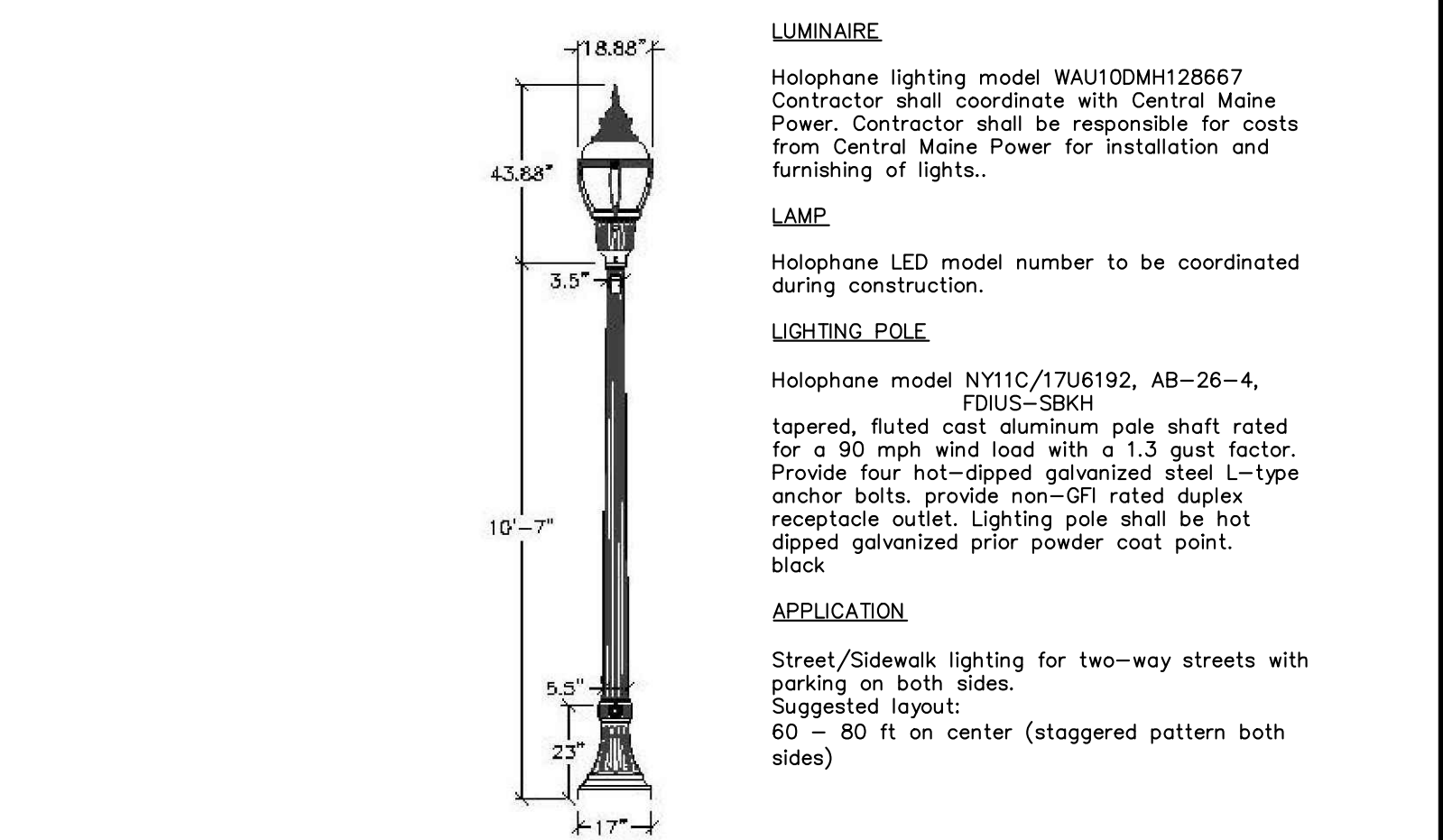
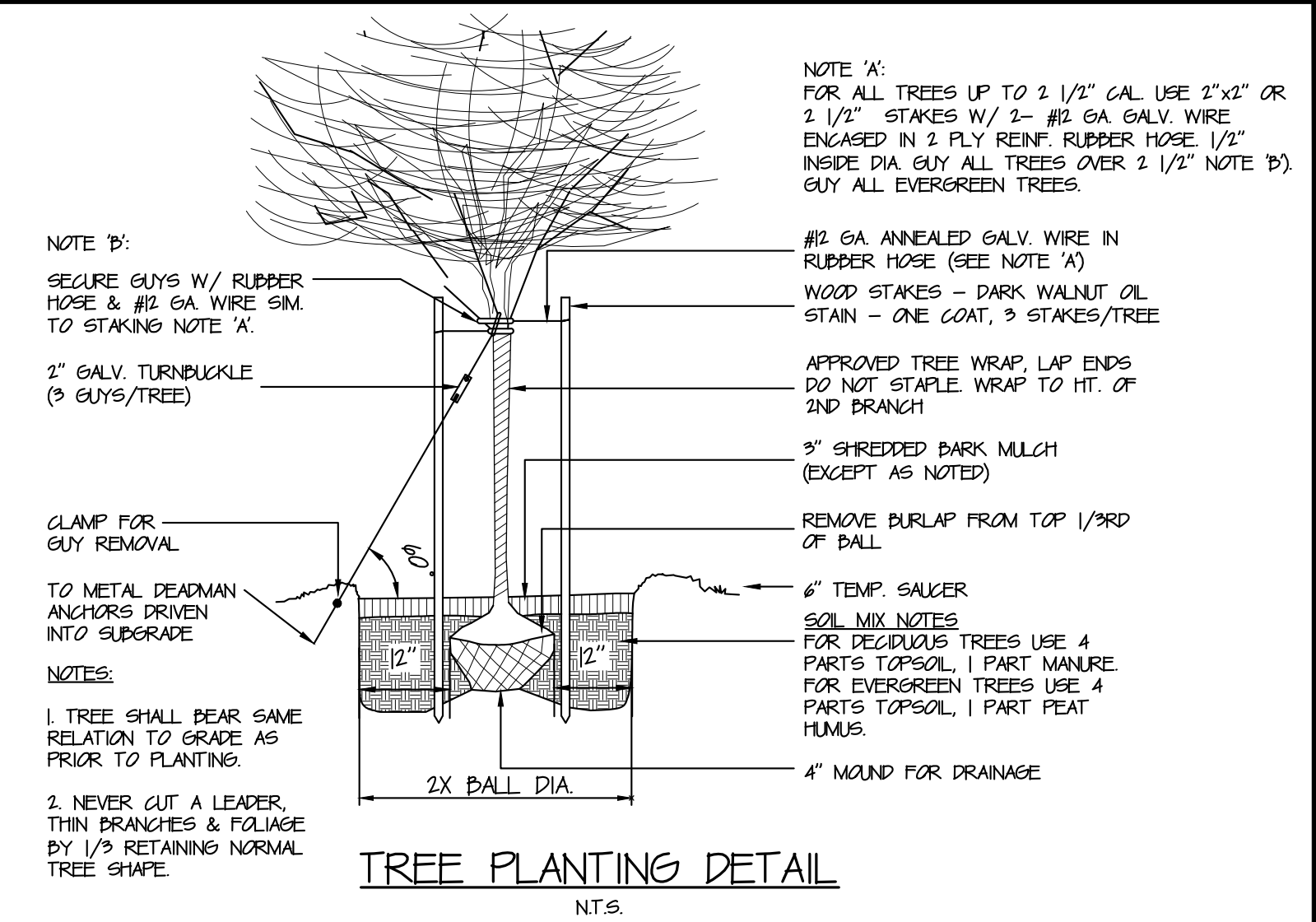
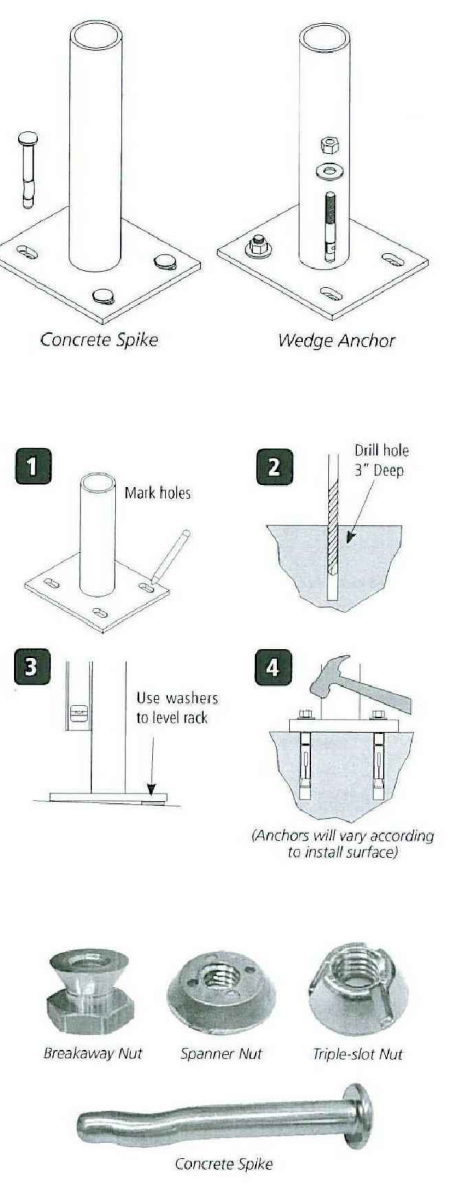
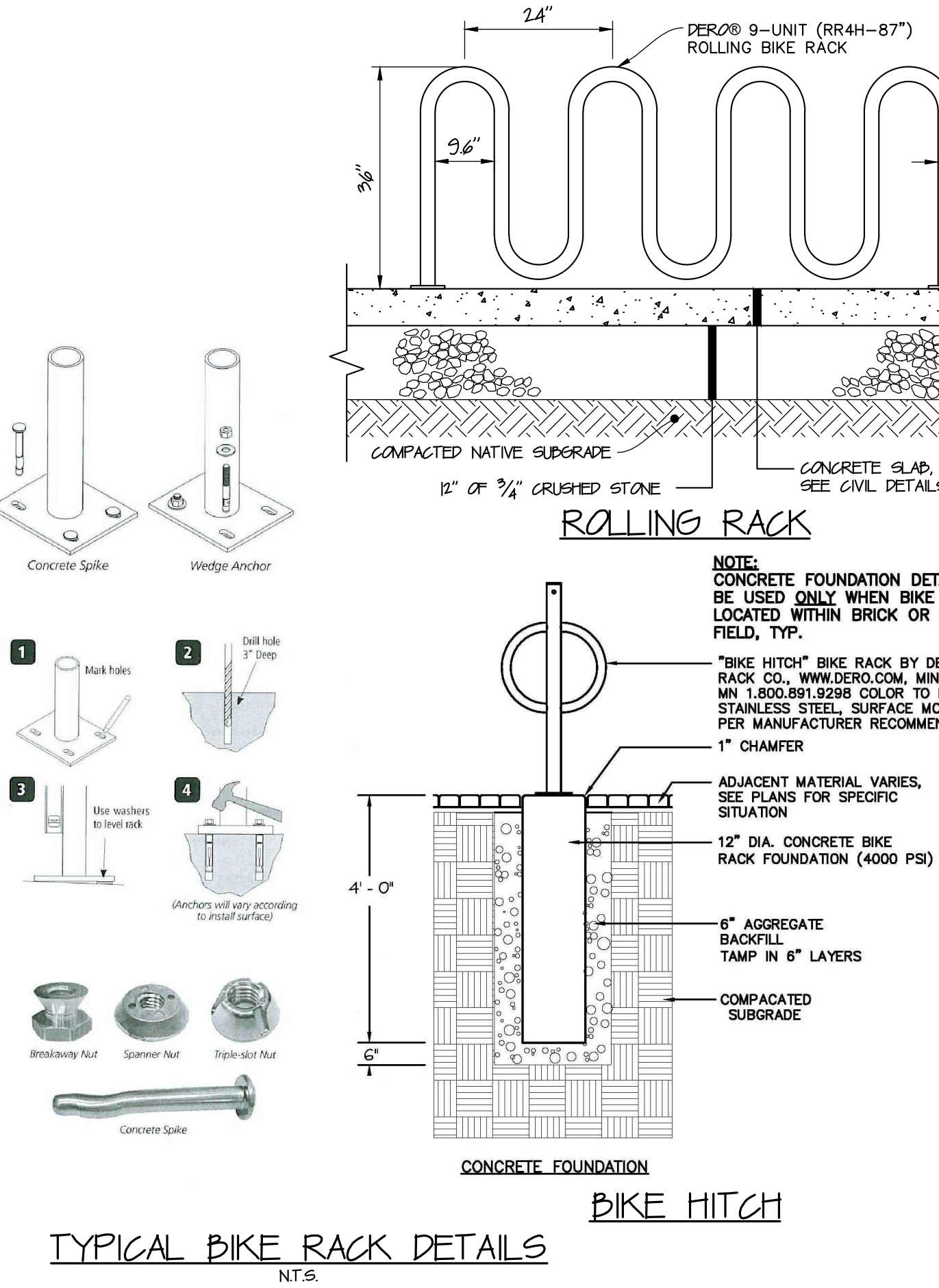
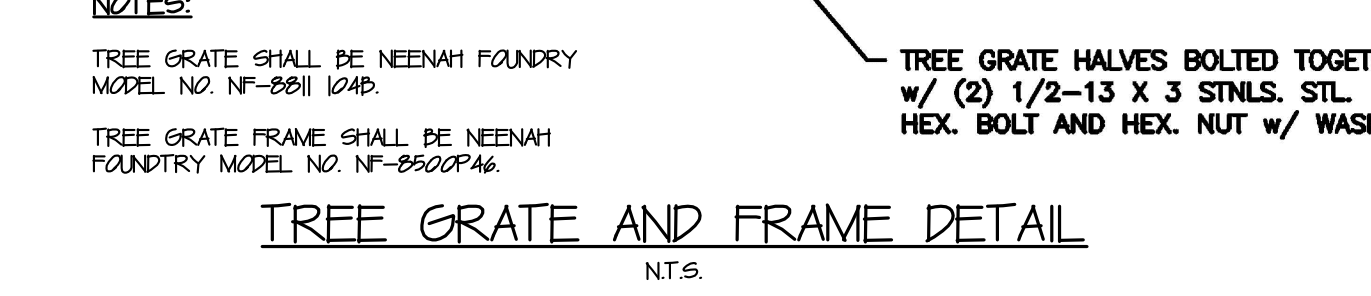
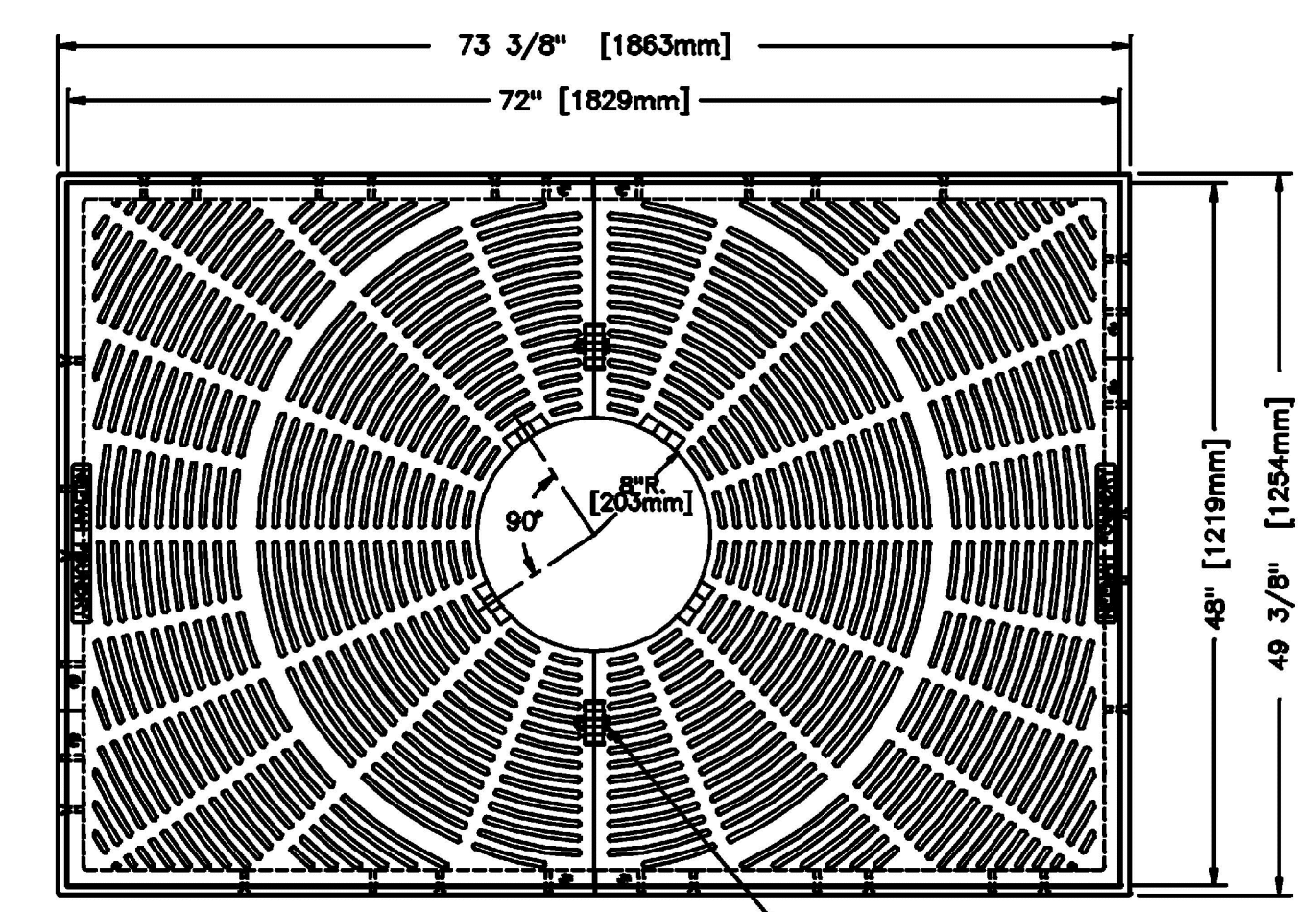
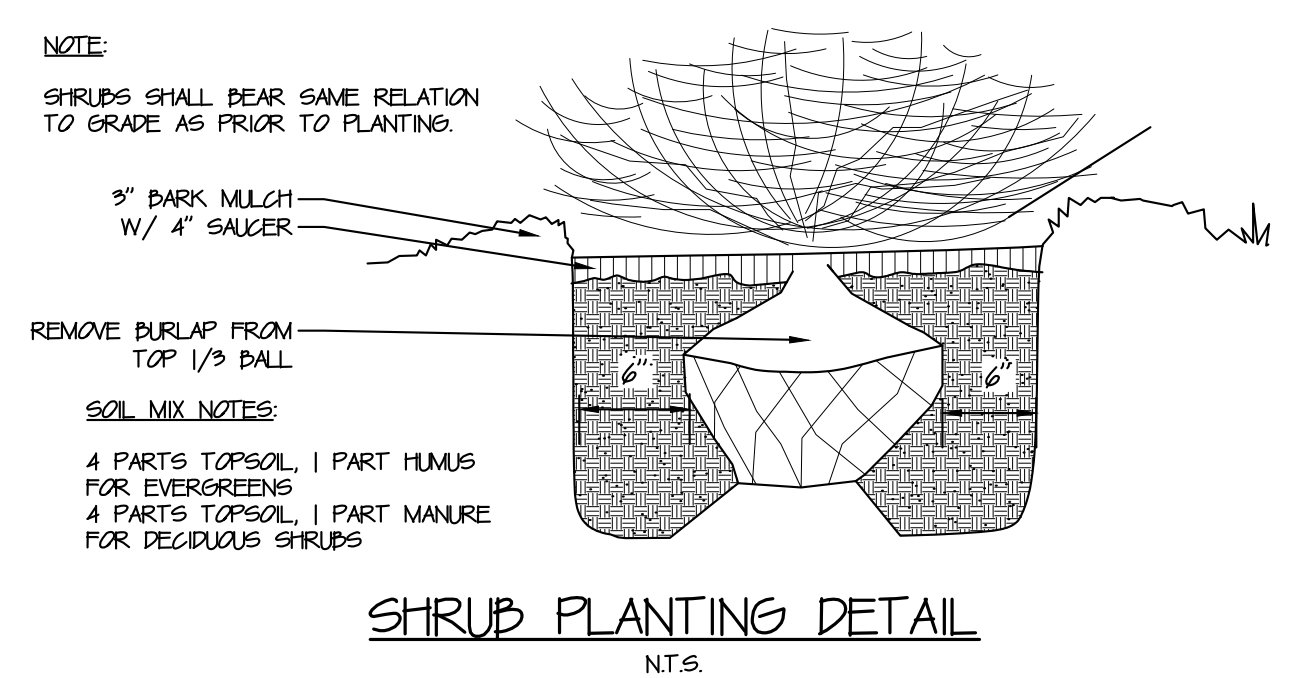
3/8" anchors are shipped with the rack. Place the rack in the desired location. Use a marker or pencil to outline the holes of the flange onto the base material. Drill the holes in accordance with the specifications shipped with the anchors. Make sure the holes are at least 6" away from any roads in the base material.

Tamper Resistant Fasteners

The concrete spike is a permanent anchor. The top of the wedge anchor can also be pounded sideways after installation so that it cannot be removed. Other tamper resistant fasteners are also available for purchase.

When using the special tamper resistant nuts, always set and first tighten the anchors. Once the rack is installed, replace two nuts from the bracket (opposite sides from each other) with the tamper resistant fastener. DO NOT OVERTIGHTEN the tamper resistant nut.

If you have any questions about installation or other features of the Bike Rack, please call our toll free at 1-800-298-4915



Anthony Mierach Landscape Architect
94 Commercial Street Portland, Maine 04101 207.744.4642

THIS DOCUMENT IS THE PROPERTY OF ANTHONY MIERACH LANDSCAPE ARCHITECT. REPRODUCTION OR MODIFICATION WITHOUT WRITTEN PERMISSION IS PROHIBITED.

REGISTERED LANDSCAPE ARCHITECT
ANTHONY MIERACH
1000 No. 11th Street
Portland, ME 04101
OFFICE No. 7

3	ISSUED FOR CONSTRUCTION	11/16/2012	DATE
2	RESPONSE TO COMMENTS	10/24/2012	DATE
1	RESPONSE TO COMMENTS	10/19/2012	DATE
REV	DESCRIPTION		
DESIGNED BY: AM	CHECKED BY: AM	2258691-000A.DWG	DRAWN BY: JBC

LANDSCAPE DETAILS

COW PLAZA HOTEL, LLC
100 COMMERCIAL STREET, SUITE 306
PORTLAND, MAINE, C/O TIM SOLEY

HYATT PLACE
PORTLAND - OLD PORT
433 FORE STREET
PORTLAND, ME

JOB NO.: 225869.01
DATE: NOVEMBER 2012
SCALE: AS NOTED
SHEET: 12 OF 12

L-101