

Mark	Date	Description

Project Status

**ISSUED FOR
CONSTRUCTION**

03-01-2013

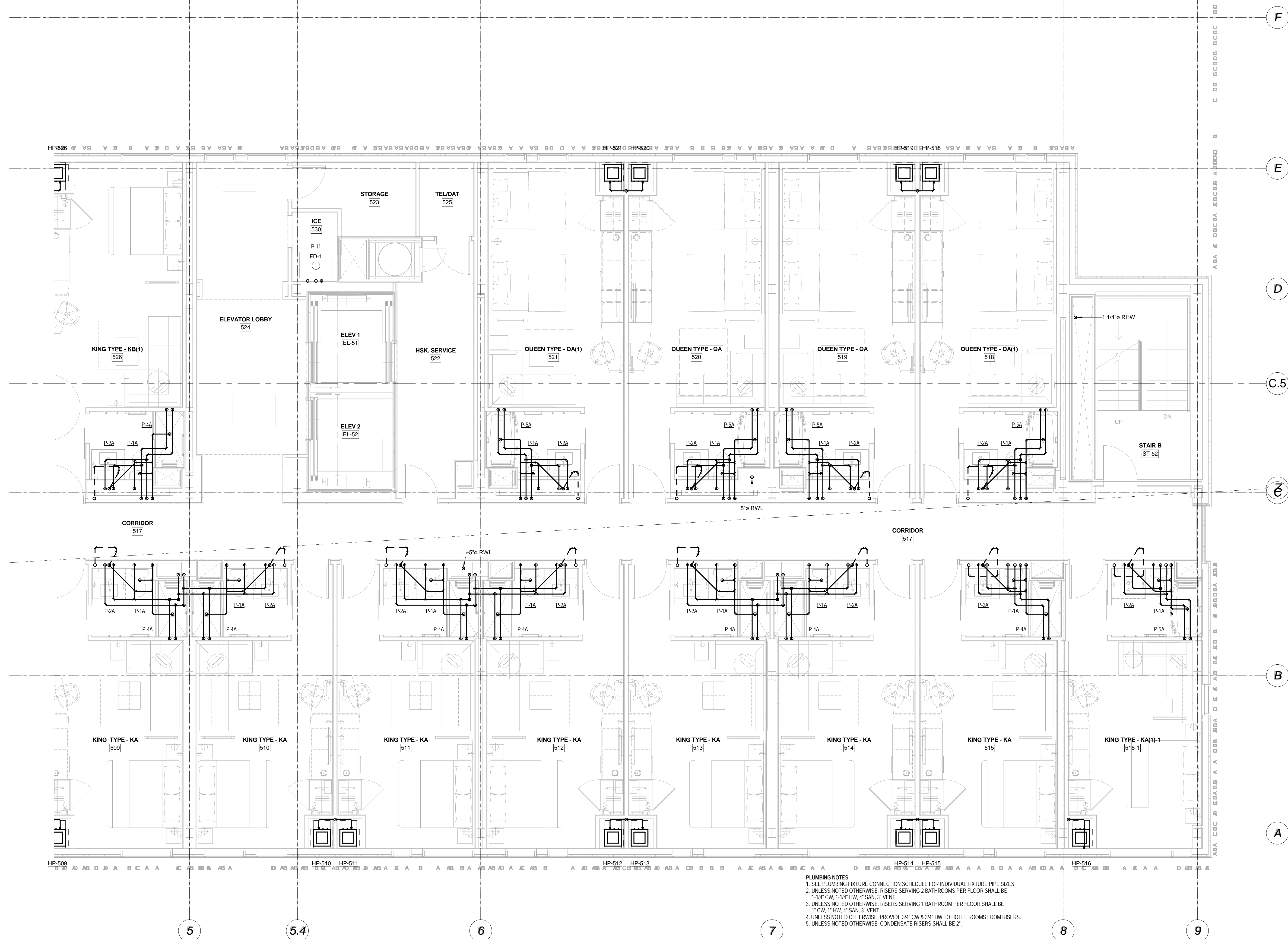
Drawing Title

**Fifth Floor
Plumbing-Part B**

Scale: 1/4" = 1'-0"

Drawing Number

M20.5B



PLUMBING NOTES:
1. SEE PLUMBING FIXTURE CONNECTION SCHEDULE FOR INDIVIDUAL FIXTURE PIPE SIZES.
2. UNLESS NOTED OTHERWISE, RISERS SERVING 2 BATHROOMS PER FLOOR SHALL BE 1-1/4" CW, 1-1/4" HW, 4" SAN, 3" VENT.
3. UNLESS NOTED OTHERWISE, RISERS SERVING 1 BATHROOM PER FLOOR SHALL BE 1" CW, 1" HW, 4" SAN, 3" VENT.
4. UNLESS NOTED OTHERWISE, PROVIDE 3/4" CW & 3/4" HW TO HOTEL ROOMS FROM RISERS.
5. UNLESS NOTED OTHERWISE, CONDENSATE RISERS SHALL BE 2".

1 Fifth Floor Plumbing Plan-Part B
1/4" = 1'-0"