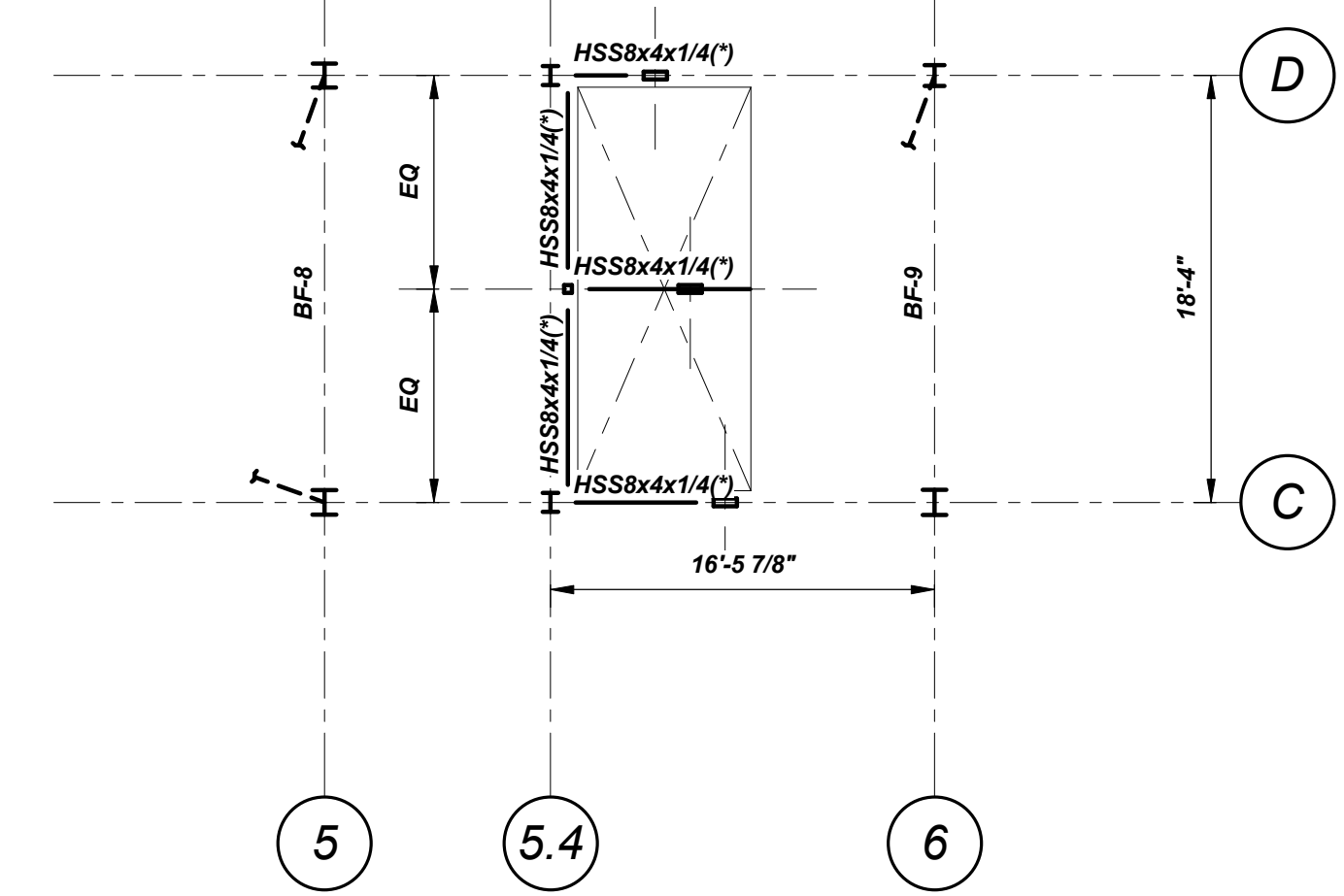


**FLOOR 2 FRAMING PLAN**  
1/8"=1'-0"

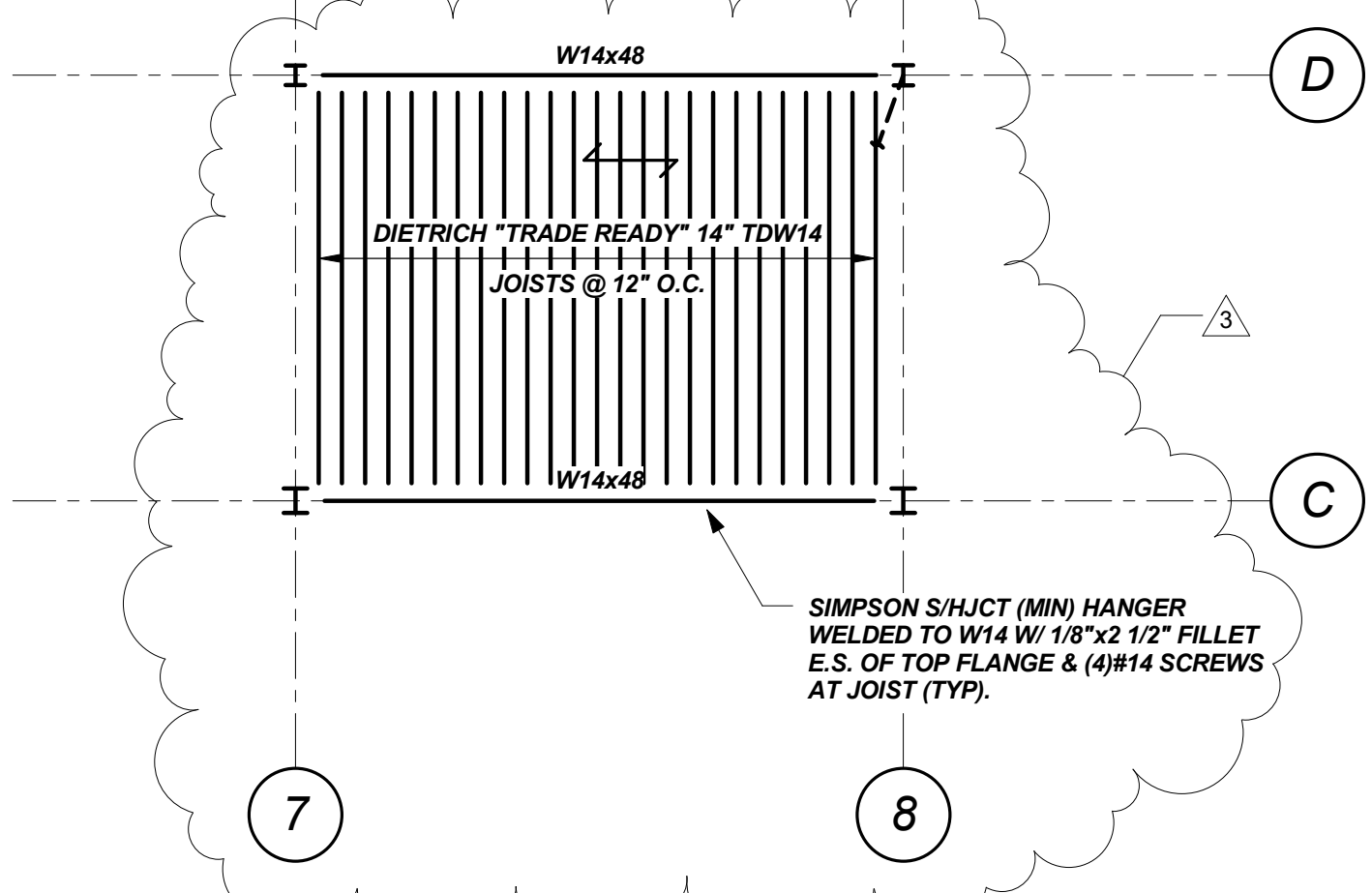
**NOTES:**

- "DB x" INDICATES DISSYMMETRIC BEAM (DB) GRADE 50 STEEL. SEE DWG S5.2 FOR TYPICAL DB BEAM/GIRDER SLAB DETAILS.
- TOP OF "D"-BEAM BOTTOM FLANGE (PLANK BEARING EL.) IS TO MATCH T/WIDE FLANGE STEEL. INDICATED BELOW.
- TOP OF WIDE FLANGE STEEL REF EL 17'-4" U.N.O.
- INDICATES SPAN DIRECTION OF 8" PRECAST PRESTRESSED HOLLOW CORE PLANK. SEE ARCH DWGS FOR FIN FLOOR REQMENTS.
- TOP OF PLANK REF EL 18'-0" U.N.O.
- PRECAST PLANK LAYOUT IS TO BE DETERMINED BY THE PRECAST PLANK SUPPLIER.
- TEMPORARY BEAMS MAY BE REQUIRED FOR ERECTION. ERECTOR SHALL DETERMINE ALL TEMPORARY BRACING AND BRACING SEQUENCE. SEE SPECIFICATIONS FOR ADDL REQMENTS.
- BF-xx INDICATES VERTICAL BRACING. SEE BRACING ELEVATIONS DWG S2.1, S2.2.
- ALL STAIR STRUCTURES SHALL BE DESIGNED BY THE STRUCTURAL STEEL FABRICATOR IN ACCORDANCE WITH THE 2009 INTERNATIONAL BUILDING CODE (IBC). STAIRS AND LANDINGS SHALL BE DESIGNED FOR A 100 PSF LIVE LOAD. COORDINATE ALL DETAILS WITH ARCHITECTURAL DRAWINGS AND SUBMIT DRAWING FOR REVIEW. DESIGN SHALL BE STAMPED BY A PROFESSIONAL ENGINEER REGISTERED IN THE STATE OF MAINE.
- INDICATES LOCATION OF CAST OPENING IN PLANK. PLANK DESIGNER SHALL COORD SIZE, LOCATIONS & QUANTITIES W/MEP DRAWINGS. PLANK MANUFACTURER SHALL DESIGN & SUPPLY ANY HEADERS/FRAMES REQD FOR OPENINGS.
- INDICATES LOCATION WHERE GROUP OF FIELD CORES ARE ANTICIPATED. PLANK DESIGNER SHALL COORD CORE SIZE, LOCATION & QUANTITIES W/MEP DRAWINGS. PLANK DESIGNER SHALL ACCOMMODATE THESE CORES IN DESIGN & PRESCRIBE ACCEPTABLE LOCATIONS IN LAYOUT DWGS. PLANK DESIGNER IS RESPONSIBLE TO CONFIRM AS-CORED LOCATIONS IN FIELD ARE CONSISTENT W/DESIGN INTENT.
- INDICATES LOCATION OF INDIVIDUAL FIELD CORE. PLANK DESIGNER SHALL COORD CORE SIZE, LOCATION & QUANTITIES W/MEP DRAWINGS. PLANK DESIGNER SHALL ACCOMMODATE THESE CORES IN DESIGN & PRESCRIBE ACCEPTABLE LOCATIONS IN LAYOUT DWGS. PLANK DESIGNER IS RESPONSIBLE TO CONFIRM AS-CORED LOCATIONS IN FIELD ARE CONSISTENT W/DESIGN INTENT.
- HSS8x4x1/4 BEAM BETWEEN CARS. BEAM SIZE AND CONNECTIONS ON HOLD PENDING ELEVATOR DESIGN AND RAIL REQUIREMENTS. \* INDICATES SIZE AND LOCATION TO BE CONFIRMED WITH FINAL ELEVATOR SHOP DWGS.
- S.C. INDICATES SLIP CRITICAL CONNECTION LOCATION. FABRICATOR'S CONNECTION DESIGNER TAKE NOTE.
- (22K) INDICATES FORCE (UNFACTORED) TO BE TRANSFERED FROM PLANK TO BEAM/BEAMS ENCIRCLED. PLANK DESIGNER TO DETERMINE IMPACT ON TYPICAL EMBED PLATE CAPACITY/QUANTITY AND ADJUST ACCORDINGLY.



**ELEVATOR FRAMING PART PLAN**  
1/8"=1'-0"

- NOTES:**
- TOP OF STEEL REF EL 9'-4" (\*)



**MEZZANINE FRAMING PART PLAN**  
1/8"=1'-0"

- NOTES:**
- T/STL= 9'-8 1/2"
  - INDICATES 3/4" USG "LEVELROCK" UNDERLAYMENT OVER 3/4" USG "STRUCTO-CRETE" PANEL (SEE ARCH).
  - MEZZANINE DESIGNED FOR 100 PSF LIVE LOAD & SHALL BE POSTED AS SUCH.

Mark	Date	Description
1/18/13	GENERAL REVISIONS	
12/6/12	ADDENDUM 2	

Project Status  
**ISSUED FOR CONSTRUCTION**  
11/16/12

Drawing Title  
**FLOOR 2  
FRAMING PLAN**

Scale: As indicated  
Drawing Number

**S1.2**