

vocon.

cleveland.
3142 Prospect Ave.
Cleveland OH, 44113
216.588.0800

new york.
11 penn plaza
floor 21, suite D
New York, NY 10001
212.457.6246

vocon. partners llc.

ie Integrated
Engineering
Consultants, Inc.

9700 ROCKSIDE ROAD- SUITE 290
CLEVELAND, OHIO 44125
(P) 216.901.6711
(F) 216.901.6712

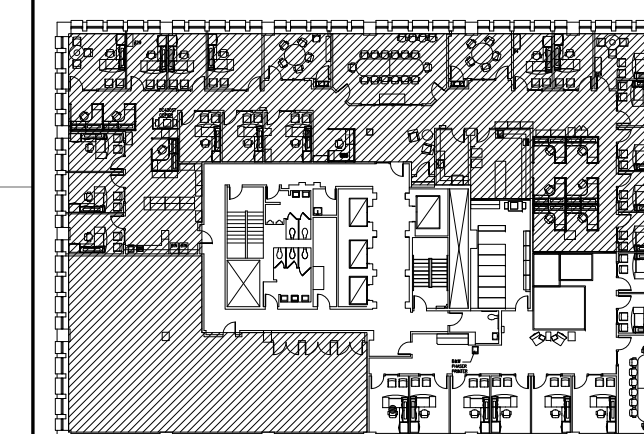
PROFESSIONAL SEAL:
I hereby certify that this drawing, Specification, plan, or report was prepared by me or under my direct supervision and that I am a duly registered Architect or Engineer, respectively, under the laws of the State of which govern this project. **WARNING:** per LAW No person may alter these documents unless person is * or under the direct supervision of * the licensed record architect (or Engineer, respectively). [Including all copyrights: JCW]



Date: _____
Registration No: _____

PROPOSED TENANT
IMPROVEMENTS FOR:
KeyBank

ONE CANAL PLAZA
FLOOR 4
PORTLAND, ME 04101



KEY PLAN
SCALE: N.T.S.

DRAWING RELEASE

No.	Date	Description
1	10.15.2010	90% CHECK SET
2	10.22.2010	PERMIT

DRAWN BY: DJS
CHECKED BY: RSS
JOB NUMBER: 8339.00

DRAWINGS ISSUED FOR:
ISSUE DATE:

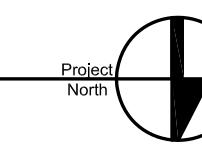
SHEET TITLE:
**4TH FLOOR
ELECTRICAL
PLAN**

SHEET NUMBER:

E2.1

1 PARTIAL FLOOR 4
ELECTRICAL PLAN

1/4" = 1'-0"



FIRE ALARM NOTES:

- PRIOR TO BID SUBMITTAL, THE ELECTRICAL CONTRACTOR SHALL VISIT THE SITE WITH BUILDING MANAGEMENT AND THE FIRE ALARM SYSTEM VENDOR TO VERIFY THE SYSTEM COMPONENTS, PANEL LOCATION, CABLING ROUTINGS, ETC.
- THE ELECTRICAL CONTRACTOR SHALL COORDINATE WITH BUILDING MANAGEMENT AND THE FIRE ALARM VENDOR FOR ALL COMPONENTS REQUIRED TO ACCOMMODATE NEW FIRE ALARM DEVICE(S).
- FIRE ALARM DEVICE LOCATIONS ARE DIAGRAMMATIC. THE FIRE ALARM SYSTEM VENDOR SHALL BE RESPONSIBLE TO VERIFY ALL NEW AND EXISTING DEVICE SPECIFICATIONS AND CHARACTERISTICS BASED ON THEIR SPECIFIC SYSTEM DEVICES AND PROVIDE FINAL LAYOUT DRAWINGS OF DEVICE LOCATIONS TO MEET ALL STATE AND LOCAL CODE REQUIREMENTS.
- PROVIDE ALL NEW DEVICES AS REQUIRED. THE ELECTRICAL CONTRACTOR AND FIRE ALARM SYSTEM VENDOR SHALL BE RESPONSIBLE TO PROVIDE ALL SERVICES REQUIRED TO PROVIDE A "COMPLETELY OPERATIONAL SYSTEM" PER ALL STATE AND LOCAL CODE REQUIREMENTS. THIS INCLUDES BUT IS NOT LIMITED TO: PRODUCING FIRE ALARM DRAWINGS AND SPECIFICATIONS FOR PERMITTING AND CONSTRUCTION, SIGNALING CIRCUIT LOADS, VOLTAGE DROPS, WIRING DIAGRAMS WIRE SIZE, BATTERY CALCULATIONS, ETC PER MUNICIPAL CODE OF THE CITY OF PORTLAND, ME.

GENERAL NOTES:

- EXIT SIGNS, EMERGENCY LIGHTING UNITS AND NIGHT LIGHTS ARE WIRED TO THE EXISTING EMERGENCY LIGHTING CIRCUIT SERVING AREA.
- SCOPE OF WORK INDICATED IS BASED ON AS-BUILT DRAWINGS DATED SEPTEMBER 10TH, 2007. VERIFY ALL CONDITIONS IN FIELD.

CODED NOTES:

- REWORK EXISTING SWITCH TO CONTROL ONLY LIGHTING WITHIN AREA AND NOT WITHIN ADJACENT TENANT SPACE.
- DISCONNECT FROM EXISTING CIRCUIT AS INDICATED.
- CONNECT TO EXISTING CIRCUIT AS INDICATED.
- CONNECT TO EXISTING CIRCUIT AND CONTROLS AS INDICATED.
- MAINTAIN EXISTING HOMERUN TO ELECTRIC ROOM 427.
- VERIFY EXACT LOCATIONS OF NEW FURNITURE POWER FEEDS WITH FURNITURE VENDOR PRIOR TO ANY ROUGH-IN.