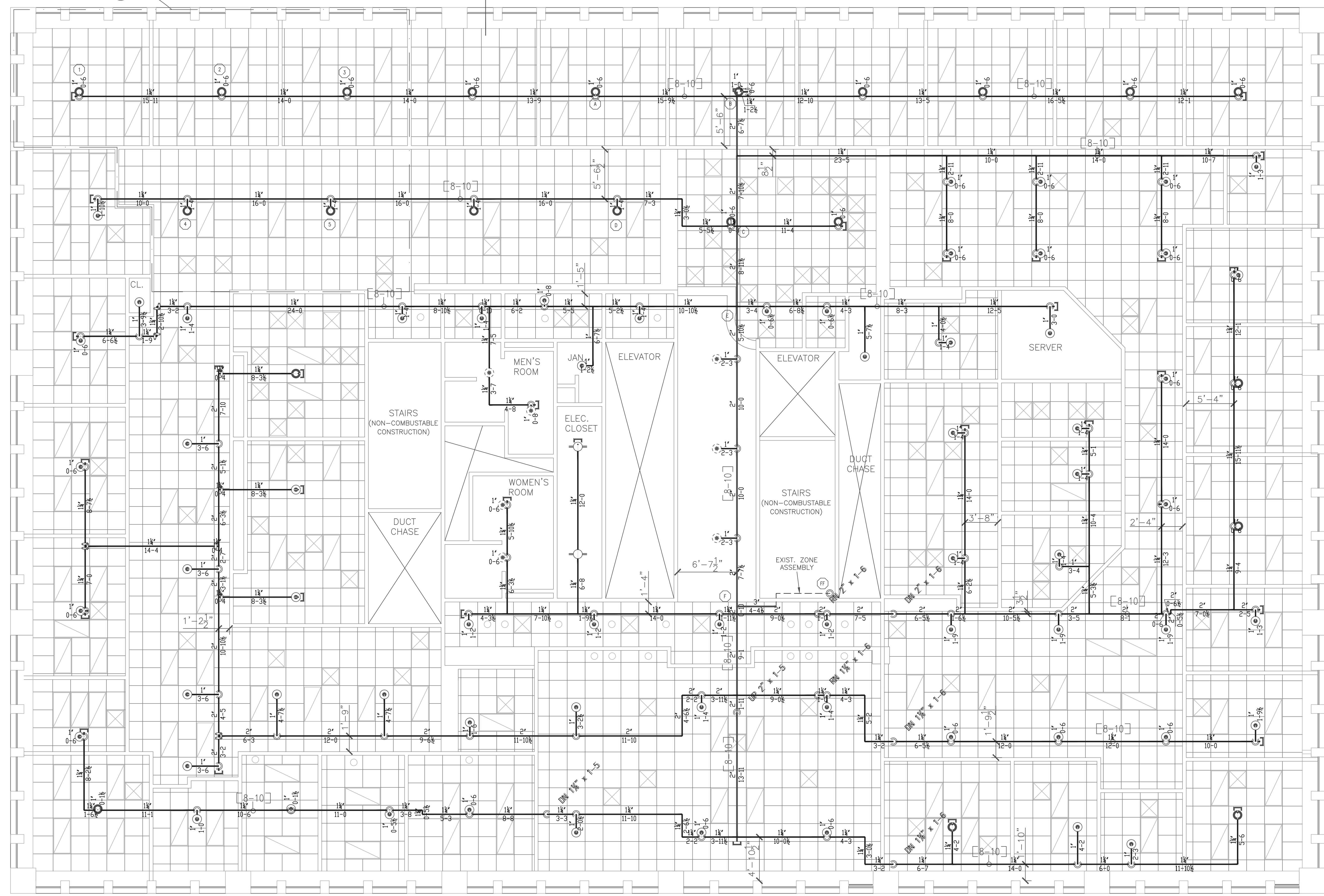


GENERAL NOTES:

- IT IS THE BUILDING OWNERS RESPONSIBILITY TO PROVIDE ADEQUATE HEAT FOR ALL AREAS IN THE BUILDING PROTECTED BY WET SPRINKLER SYSTEMS AND FOR ALL WATER FILLED SUPPLY PIPES, VALVES AND SYSTEM RISERS IN ALL DRY PIPE SPRINKLER SYSTEMS.
- ALL NEW PIPING IS TO BE HYDROSTATICALLY TESTED AT NOT LESS THAN 200 PSI FOR 2 HOURS, OR AT 50 PSI IN EXCESS OF THE MAXIMUM PRESSURE, WHEN THE MAXIMUM PRESSURE TO BE MAINTAINED IS IN EXCESS OF 150 PSI. (PER NFPA 13)
- WHETHER OR NOT INDICATED ON DRAWINGS, THE FOLLOWING ITEMS ARE TO BE PROVIDED:
 - SPARE HEAD CABINET WITH WRENCH (NFPA 13)
 - PROVISIONS FOR FLUSHING CONNECTIONS AND DRAINING OF ALL PIPE.
 - INSPECTORS TEST CONNECTION SHALL BE PROVIDED FOR EACH SYSTEM
 - A) FOR WET PIPE SYSTEMS SEE NFPA 13
 - B) FOR DRY PIPE SYSTEMS SEE NFPA 13
 - AIR PRESSURE SHALL BE MAINTAINED ON ALL DRY PIPE SYSTEMS BY AN APPROVED AUTOMATIC AIR COMPRESSOR OR PLANT AIR SYSTEM SPECIFICALLY APPROVED FOR AND CAPABLE OF AUTOMATICALLY MAINTAINING THE REQUIRED AIR PRESSURE.
 - GRIDDED WET PIPE SYSTEMS SHALL BE PROVIDED WITH A RELIEF VALVE NOT LESS THAN 1/4" IN SIZE. (NFPA 13).
- ALL PIPE 1" SHALL BE SCHEDULE 40 STEEL WITH MALLEABLE IRON FITTINGS.
- ALL PIPE 1 1/2" AND LARGER, SHALL BE SCHEDULE 10 STEEL, WITH GROOVED COUPLINGS AND VICTAULIC® MECHANICAL FITTINGS OR EQUIVALENT.
- ALL MECHANICAL TRADES ARE TO COORDINATE THEIR WORK WITH SPRINKLER WORK AS SHOWN ON THESE PLANS.
- ALL HANGERS AND LOCATIONS ARE TO BE IN ACCORDANCE WITH N.F.P.A. 13.
- ALL SPRINKLER HEADS IN SUSPENDED CEILING TILES ARE TO BE LOCATED IN THE CENTER OF THE ACOUSTICAL CEILING PANEL.
- ALL PIPING IS TO BE PITCHED IN ACCORDANCE WITH N.F.P.A. 13.
- HYDRAULIC DATA REFERENCE POINTS: (25) ↙
- CENTER LINE OF PIPE ABOVE FINISH FLOOR [12'-0"] BELOW DECK [12"]
- PROTECTIVE CAPS ARE TO REMAIN ON THE SPRINKLER HEADS UNTIL AFTER CEILINGS ARE INSTALLED.
- THE SCOPE OF WORK UNDER THIS CONTRACT IS TO EXTEND AN EXISTING NFPA 13 WET SPRINKLER SYSTEM.

AREA 1
.10/900
+100



DESIGN AREA #1

HYDRAULIC DATA NAMEPLATE

This Building is protected by a hydraulically designed Automatic Sprinkler System

Location OFFICE-9TH FL

No. of Sprinkler 5

Basis of design

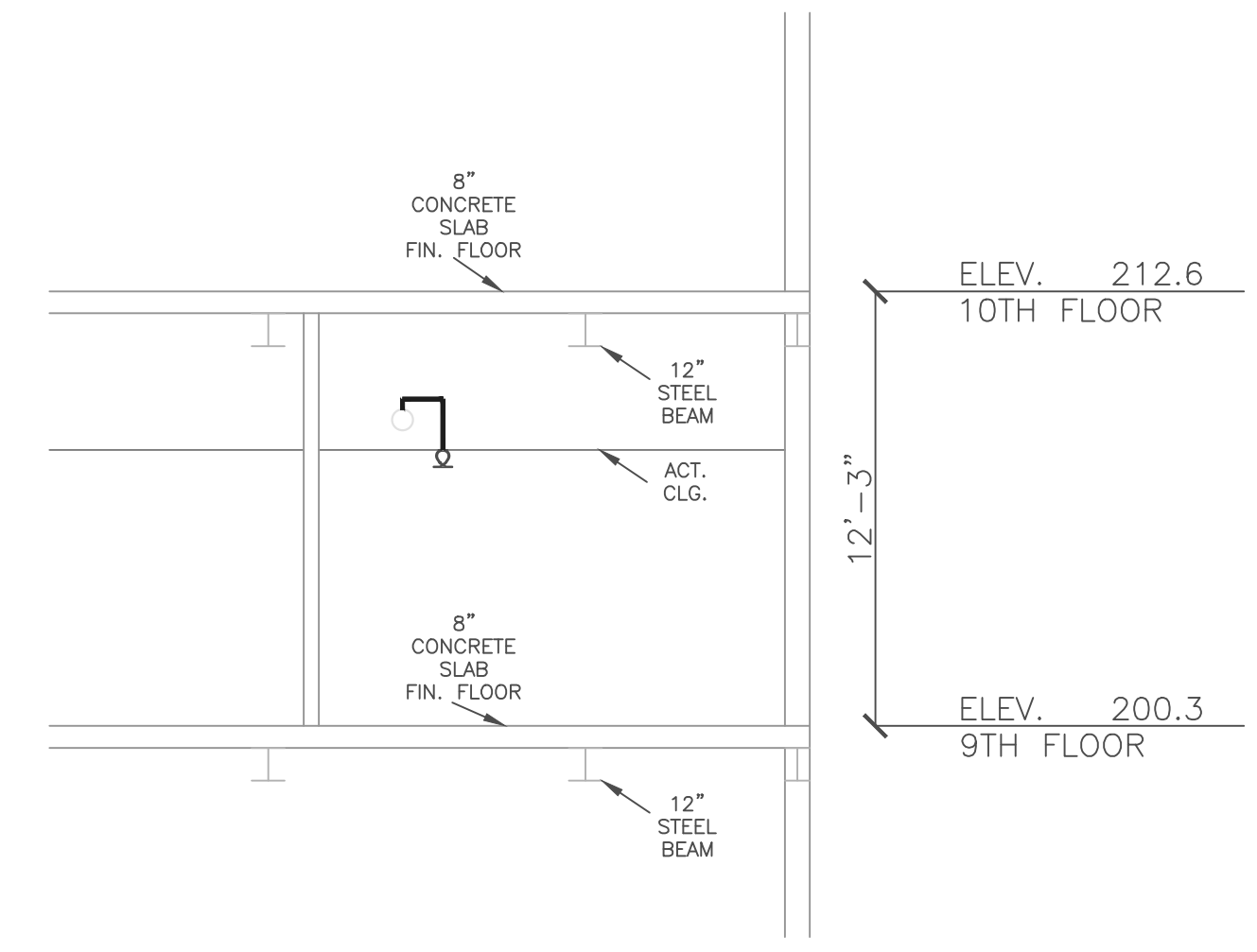
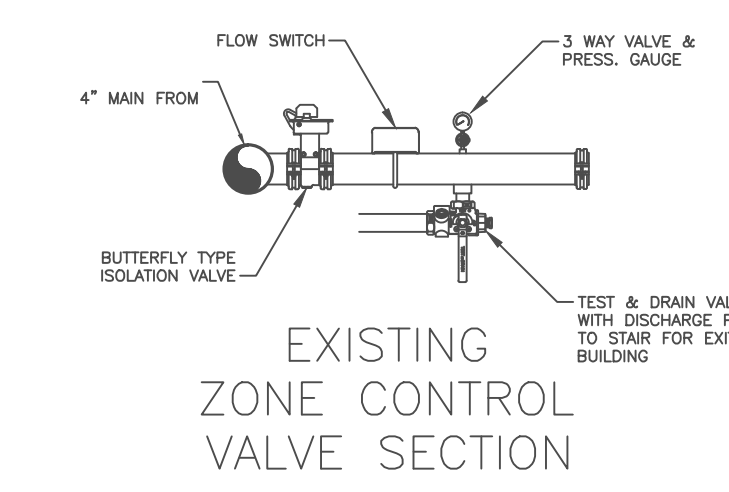
1. Density 10 gpm/ft²
2. Design area of discharge 900 sq ft

System Demand

1. Water Flow Rate @ Base/Pump 186.12 gpm
2. Residual Pressure @ Base/Pump 94.779 psi

CUSHION = 55.12 psi

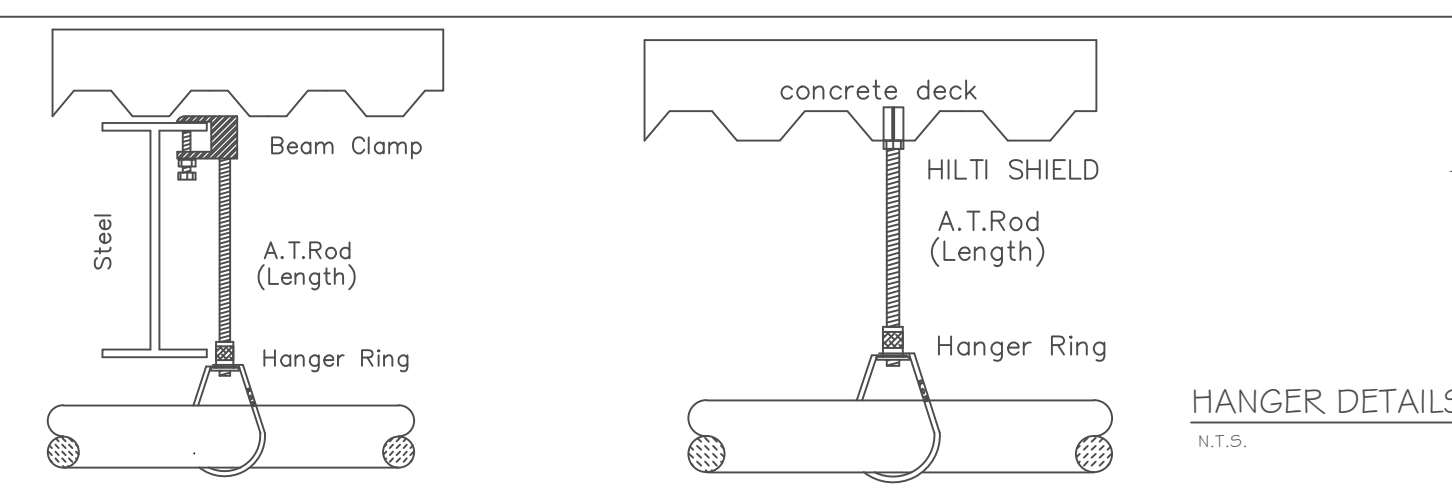
HYDRAULICALLY MOST REMOTE



9TH FLOOR
SCALE= 3/16"=1'-0"
FIN. FLOOR ELEV. = 200.3
ALL CLGS @ 8'-5" AFF U.N.
OFFICES AND CORRIDORS THROUGHOUT U.N.

PARTIAL BUILDING SECTION "1"
SCALE: "NTS"

1. Type of Hazard LIGHT	2. Deflector Distance PER SPEC
3. Pipe Type Uses BLK SCH 10/40	4. Sprinkler Area PER SPEC
5. Type of Construction NON-COMBUSTIBLE	
6. Maximum Spacing Allowed PER NFPA 13	
7. PIPE SIZING METHOD: PIPE SCHEDULE <input type="checkbox"/> HYDRAULICALLY CALCULATED <input checked="" type="checkbox"/>	
8. ALL HANGERS AND LOCATIONS TO BE IN ACCORDANCE WITH N.F.P.A. PAMPHLET NO. 13	
9. HIGH DEGREE TEMPERATURE SPRINKLER HEADS TO BE INSTALLED IN ACCORDANCE WITH N.F.P.A. PAMPHLET NO. 13	



HANGERS

AS SHOWN IN DETAIL

ABBREVIATIONS

B	Bottom of Beam
D	Bottom of Deck
P	Bottom of Pipe
H.V.	Head Valve
N.A.C.	Nipple and Cap
NIC	Net in Contract
NET	Net to Scale
O.B.J.	Open Bar Joints
P.R.V.	Pressure Red Valve
R.M.	Roof Manhole
S	Standpipe
T.O.B.	Top of Beam
T.O.P.	Top of Pipe
T.O.S.	Top of Steel
U.N.	Unless Otherwise Noted
CL	Centerline
NA	No Automatic Sprinklers
OTA	Open to Above

CONTRACT RESPONSIBILITIES

ITEM	FFC	OTHERS
STREET CORN		
LUIGI MAN	●	
EXCAVATION	●	
FLUSHING	●	
WIRING	●	
PAINTING	●	
TAMPER SWITCHES	●	
FLOW SWITCHES	●	
STREET CORN	●	

SPRINKLER HEAD LEGEND

SYMBOL	MAKE	MODEL	SIN	FINISH	TYPE	TEMP	NPT	ORIFICE	K-FACTOR	TOTAL
○	RELIABLE	F1FR 56	RA1425	BRONZE	UPRIGHT	200° F	1/2"	1/2"	5.6	2
○	RELIABLE	F1FR 56	RA1414	WHITE	SEMI-REC PENDENT	155° F	1/2"	1/2"	5.6	66
○	RELIABLE	F1FR 56	R4842	WHITE	SEMI-REC PENDENT	155° F	3/4"	17/32"	8.0	22
○	RELIABLE	G5 56	RA3415	WHITE	CONCEAL	165° F	1/2"	1/2"	5.6	7
TOTAL										97

SUBMITTALS

SENT TO	DATE RECEIVED
I.S.O.	
F.M.	
L.M.	
I.R.I.	
L.A.	
STATE FIRE	●
TAMPER SWITCHES	●
LOCAL FIRE	●
LOCAL WATER	●
OWNER	●

LICENSE# 093 R.M.S.# 442 PERMIT # 11178

P.O. BOX 1285 LEWISTON MAINE 04243-1285

PERKINS, THOMPSON
1 CANAL PLAZA
PORTLAND, ME 04101

CONTRACT WITH MONAGHAN

SYSTEM TYPE	NO.	DATE	DESCRIPTION
WET			
DRY			
DELUGE			
PREACTION			
ME LIFE			
HYDRO-PRO			

AS NOTED
DRAWN BY RDO
CHECKED BY SEG
DATE 11/14/2014
TOTAL SPKRS ON JOB 97
SHEET# 1 of 1
JOB# 14060

SUBMITTAL COPY