

Z7H FLOOR WORK AREA  
1/8" = 1'-0"

**BUILDING SUMMARY**

Property Location: 1 Canal Plaza, CBL 321-56-1  
 Stonecoast Fund Services is renovating Suite 602, 4680 square feet for offices, which is part of the existing sixth floor of a twelve story building, located at 1 Canal Plaza. The existing B Business Use is not changing. The existing building is Construction Type I with an existing supervised sprinkler system and fire alarm system.

The offices include open office area, small enclosed offices, a conference room, files and kitchenette. Access to an existing corridor, elevator, bathrooms and stairs is provided. There are no changes to the exterior walls or interior bearing columns.

Interior changes include acoustical ceiling, carpeting and new partitions with metal studs with 5/8" Type X gypsum board on each side. Renovations to the sprinkler, electrical and fire safety systems shall be installed per code by contractors.

**CODE SUMMARY:**

**International Building Code 2009:**

Part of the existing fifth floor is being renovated for Stonecoast Fund Services offices:

Business Use (B) Office 4680 SF

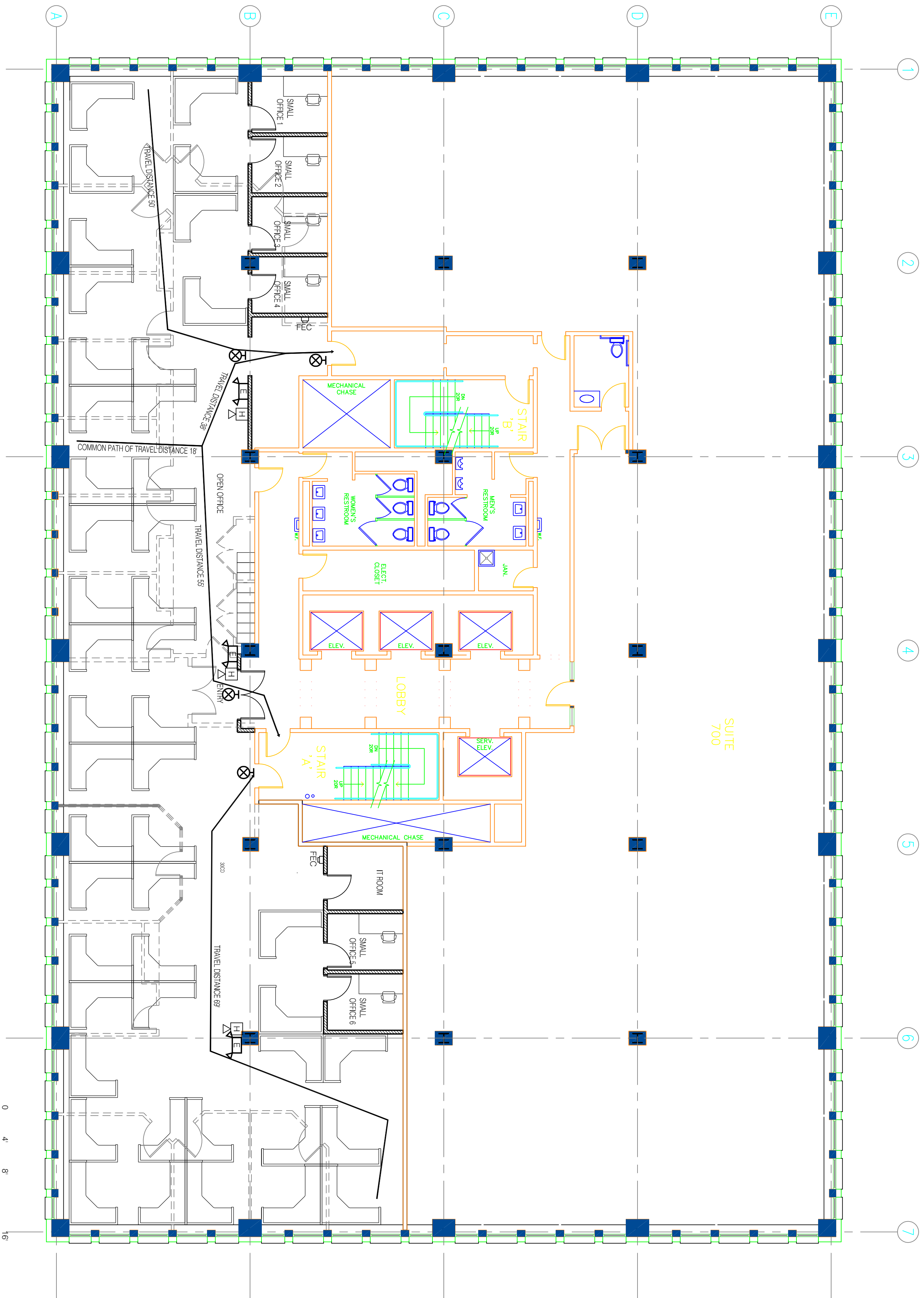
**OCCUPANT LOAD**

NFPA-2347 SF @ 100 SF/Occupant=47 occupants  
 IBC - 2347 SF @ 100 SF/Occupant=47 occupants

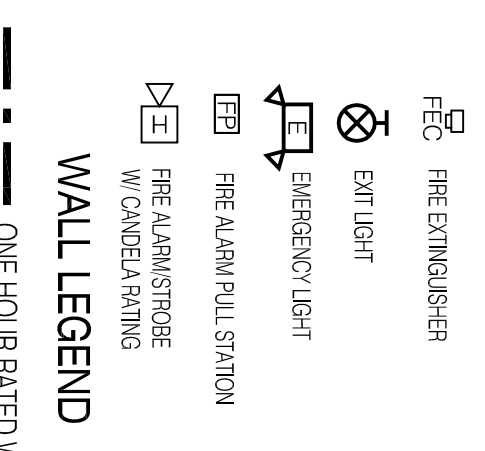
Total 47 Occupants

2 separate means of egress provided, each egress 12 occupants  
 24 occupants x 2 inches = 48 inches door width required-34' provided

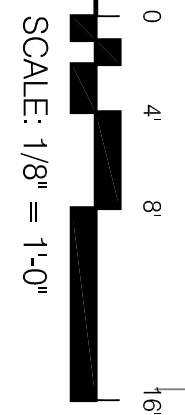
**Existing Construction Type:**  
 Construction Type IIa (protected) -Unlimited floor area  
 Fire Suppression: Existing supervised automatic sprinkler system.  
 Non stroke candle rating to be sized per code by fire safety installer  
 Common Path of Travel- Allowed-100' Provided 18'  
 Maximum Dead End Corridor - Allowed-50 feet Provided 4 feet  
 Maximum Travel Distance - Allowed-300 feet Maximum Provided 69 feet



Seventh Floor Life Safety Plan  
1/8" = 1'-0"



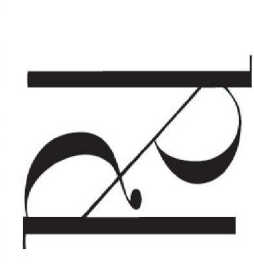
**WALL LEGEND**  
 --- ONE-HOUR RATED WALLS



SCALE: 1/8" = 1'-0"



PROSPECT



58 FORD ST., PORTLAND, ME  
 www.prospectdesign.me  
 T: 207-749-7400

**Hemisphere DESIGN**

Architecture  
 58 Fore Street  
 Portland, ME 04101  
 207.232.6079  
 joe@hemispheredesign.com  
 www.hemispheredesign.com

STONE COAST 4  
 1 CANAL PLAZA  
 STONECOAST FUND SERVICES

SEVENTH FLOOR LIFE SAFETY PLAN

PERMIT SET

SHEET TITLE	REVISION
DATE: February 19, 2016	BRANNAN

A7.4