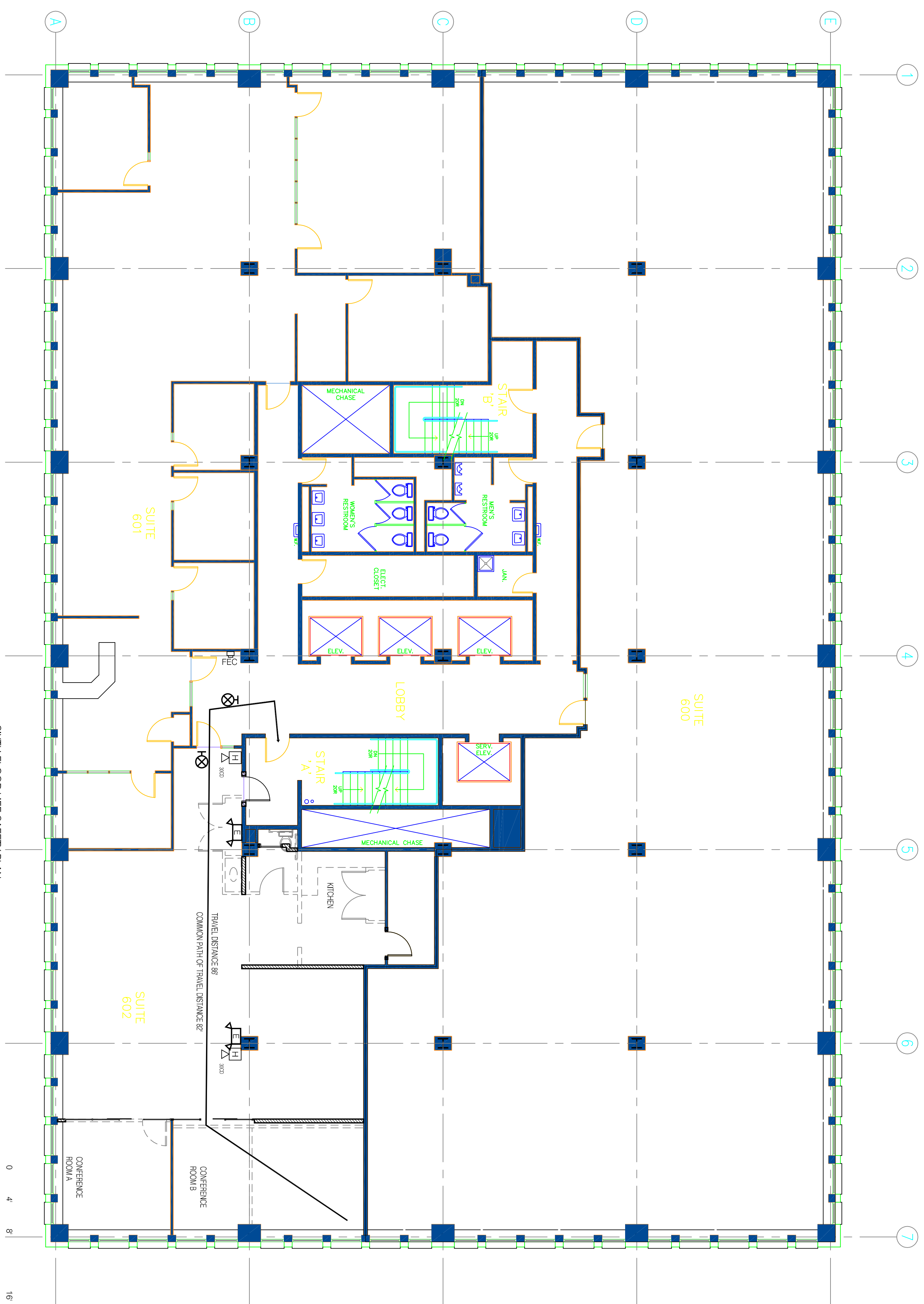


6TH FLOOR WORK AREA  
1/8" = 1'-0"



SIXTH FLOOR LIFE SAFETY PLAN  
1/8" = 1'-0"

SCALE: 1/8" = 1'-0"

**BUILDING SUMMARY**

Property Location: 1 Canal Plaza, CBL 32-1-36-1  
 Stonecoast Fund Services is renovating Suite 602, 2347 square feet for offices, which is part of the existing sixth floor of a twelve story building, located at 1 Canal Plaza. The existing Business Use is not changing. The existing building is Construction Type IIA with an existing supervised sprinkler system and fire alarm system.

The offices include open office area, small enclosed offices, a conference room, files and kitchenette. Access to an existing corridor, elevator, bathrooms and stairs is provided. There are no changes to the exterior walls or interior bearing columns.

Interior changes include acoustical ceiling, carpeting and new partitions with metal studs with 5/8" Type X gypsum board on each side. Renovations to the sprinkler, electrical and fire safety systems shall be installed per code by contractors.

**CODE SUMMARY:**

**International Building Code 2009:**

Part of the existing fifth floor is being renovated for Stonecoast Fund Services offices:

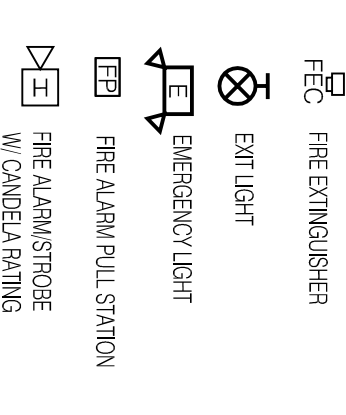
Business Use (B) Office 2347 SF

**OCCUPANT LOAD**  
 NFPA-2347 SF @ 100 SF/Occupant=24 occupants  
 IBC- 2347 SF @ 100 SF/Occupant=24 occupants

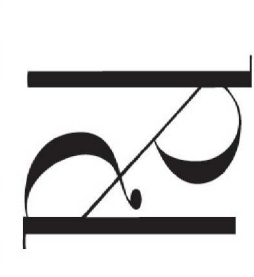
Total 24 Occupants

1 means of egress provided  
 24 occupants x 2 inches = 4.8 inches door width required 34" provided

**Existing Construction Type:**  
 Construction Type IIA (protected) -Unfinished floor area  
 Fire Suppression: Existing supervised automatic sprinkler system.  
 Horn/strobe candle rating to be sized per code by the fire safety installer.  
 Common Path of Travel - Allowed-100' Provided 78'  
 Maximum Dead End Corridor - Allowed-50 feet Provided 0 feet  
 Maximum Exit Access Travel Distance - Allowed-300 feet Maximum Provided 86 feet



PROSPECT



DESIGN  
 58 FORE ST., PORTLAND, ME  
 www.prospectdesign.me  
 T: 207-749-7400

**HEMESphere DESIGN**

Architecture

58 Fore Street  
 Portland, ME 04101  
 207.232.6079  
 joe@hemisphere.design.com  
 www.hemisphere.design.com

STONE COAST 4  
 1 CANAL PLAZA  
 STONECOAST FUND SERVICES

SIXTH FLOOR LIFE SAFETY PLAN

PERMIT SET

SHEET TITLE	SIXTH FLOOR LIFE SAFETY PLAN
REVISION	
DESIGNED BY	
DATE:	February 19, 2016

A6.4