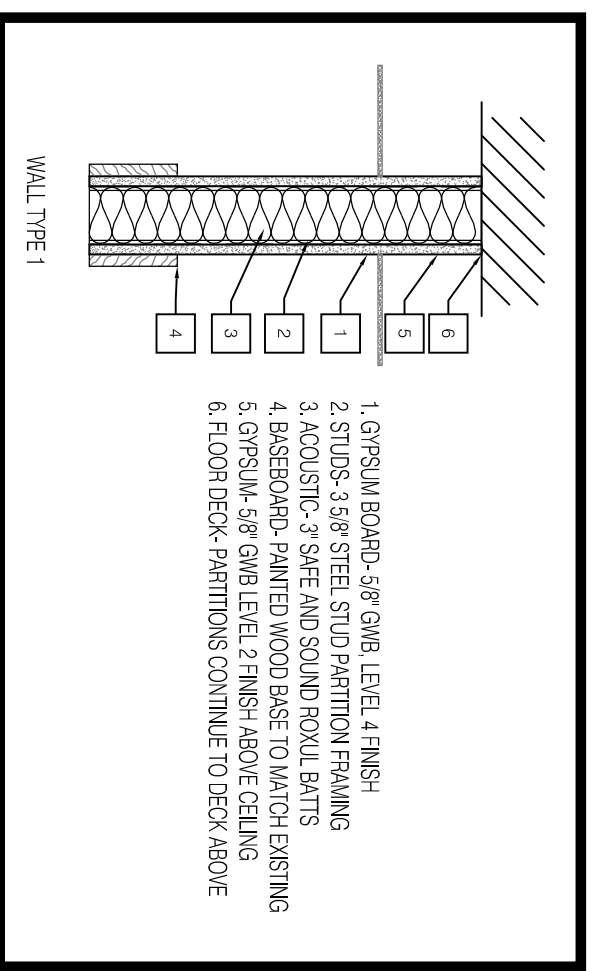
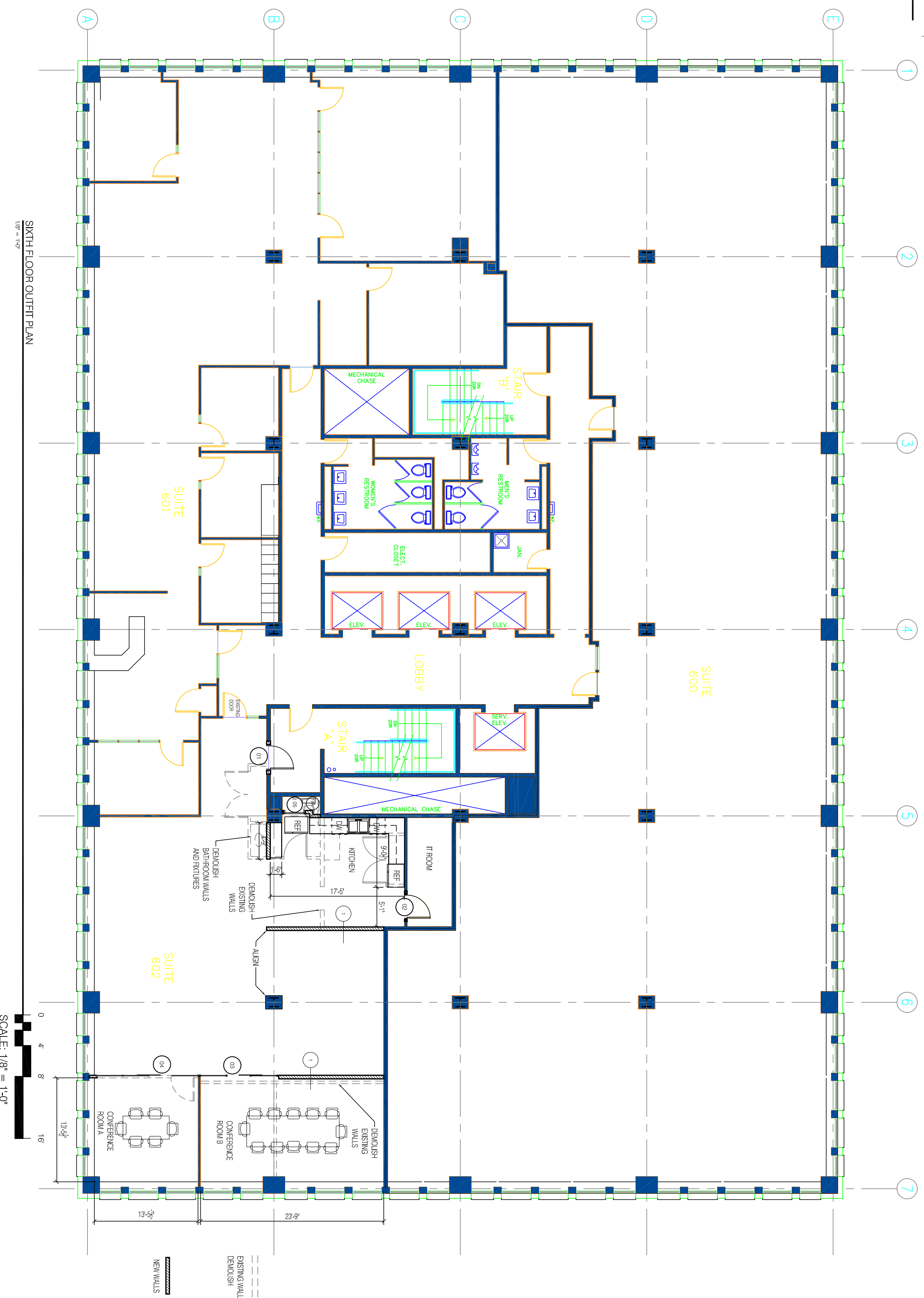


5TH FLOOR WORK AREA
1/8" = 1'-0"



DOOR		FRAME		FIRE RATING LABEL	NOTES
MARK	SIZE	MATL	MATL		
1	3'-0" x 6'-8"	1 3/4" STEEL	N/A	1 1/2 HR	1 1/2 HR DOOR WITH CLOSER
2	3'-0" x 6'-8"	1 3/4" WOOD	N/A	---	EXISTING BARN TYPE SLIDING GLASS
3	3'-0" x 8'-0"	1/2" GLASS	TEMPERED GLASS	---	BARN TYPE SLIDING GLASS
4	3'-0" x 8'-0"	1/2" GLASS	TEMPERED GLASS	---	BARN TYPE SLIDING GLASS
5	2'-6" x 6'-8"	1 3/4" WOOD	N/A	---	ACCESS FOR HW

DOOR NOTES:
ALL DOORS TO HAVE FOLLOW UP METAL FRAMES UNLESS NOTED
DOOR-HARDWARE TO BE BRUSHED SS
SLIDING GLASS DOORS TO BE 6'4" HIGH
GLASS DOORS TO HAVE 2" HIGH SS HANDLE



SIXTH FLOOR OUTFIT PLAN
1/8" = 1'-0"



PROSPECT



DESIGN
58 FORD ST., PORTLAND, ME
www.prospectdesign.me
T: 207-749-7400

HEMESphere
DESIGN

Architecture

58 Ford Street
Portland, ME 04101
207.232.6079
joe@hemespheredesign.com
www.hemespheredesign.com

STONE COAST 4
STONECOAST FUND SERVICES
1 CANAL PLAZA

SIXTH FLOOR PLAN

PERMIT SET

SHEET TITLE	SIXTH FLOOR PLAN
REVISION	
DATE:	February 18, 2016
DRAWN BY:	

A6.1