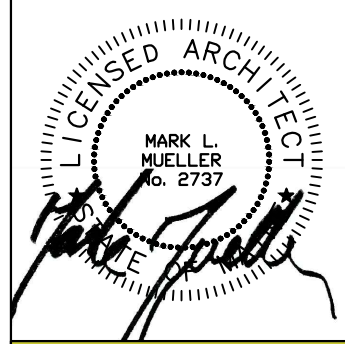
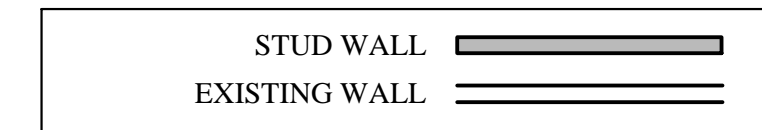


**KEY PLAN**  
N.T.S.

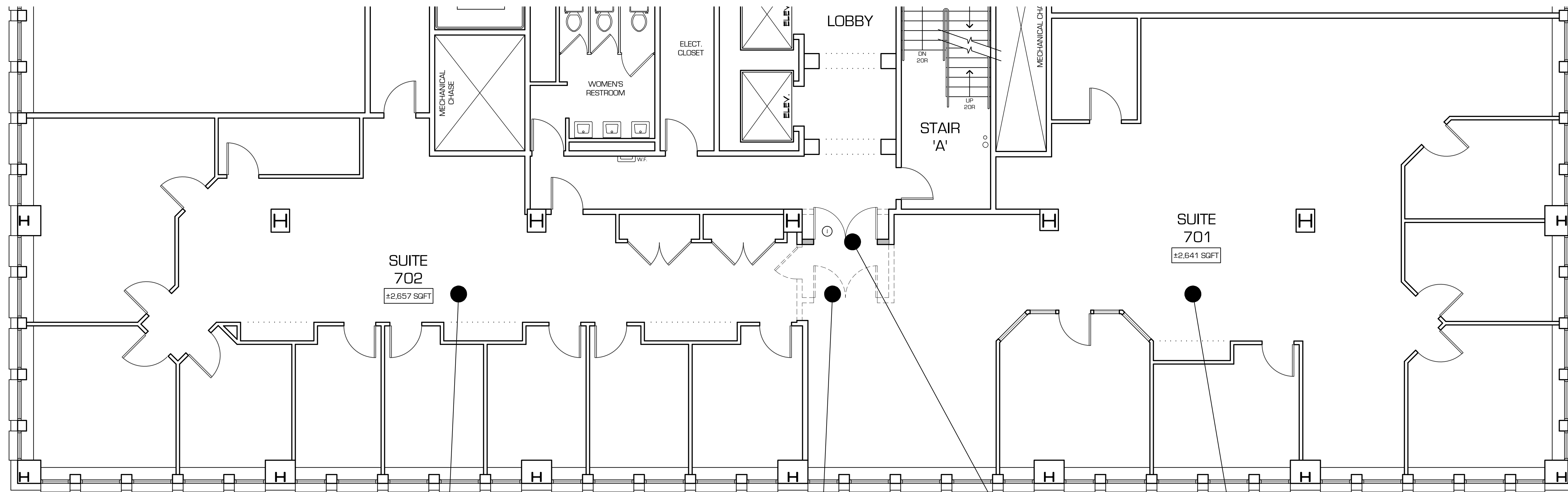
AREA OF  
EXISTING  
TENANT  
SPACE  
(SHADED)

**WALL LEGEND**



**MARK  
MUELLER  
ARCHITECTS**  
A.I.A.  
100 Commercial Street  
Suite 205  
Portland, Maine 04101  
Phone: 207.774.9057  
Email:  
rfi@muellerarchitects.com

© COPYRIGHT 2015  
MARK MUELLER ARCHITECTS



NEW PAINT  
THROUGHOUT SPACE  
IN IT'S ENTIRETY

REMOVE EXISTING  
WALLS & DOORS AS  
SHOWN (DASHED)

NEW WALL AND  
DOUBLE DOOR

NEW CARPET  
THROUGHOUT SPACE  
IN IT'S ENTIRETY

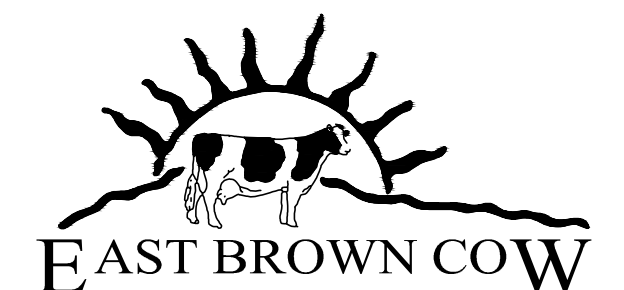
**7TH FLOOR PLAN**  
SCALE: 3/16"=1'-0"

**STONE COAST FOUND SERVICES**

ONE CANAL PLAZA  
PORTLAND, MAINE

**7TH FLOOR OFFICES**

REVISIONS	DATE
	10/16/15
PROJECT	STONE COAST FOUND SERVICES
DRAWN BY	M.M./T.O.
CHECK BY	M.M.



**EAST BROWN COW**

**PERMIT SET : OCTOBER 20, 2015**

**A-1.2**