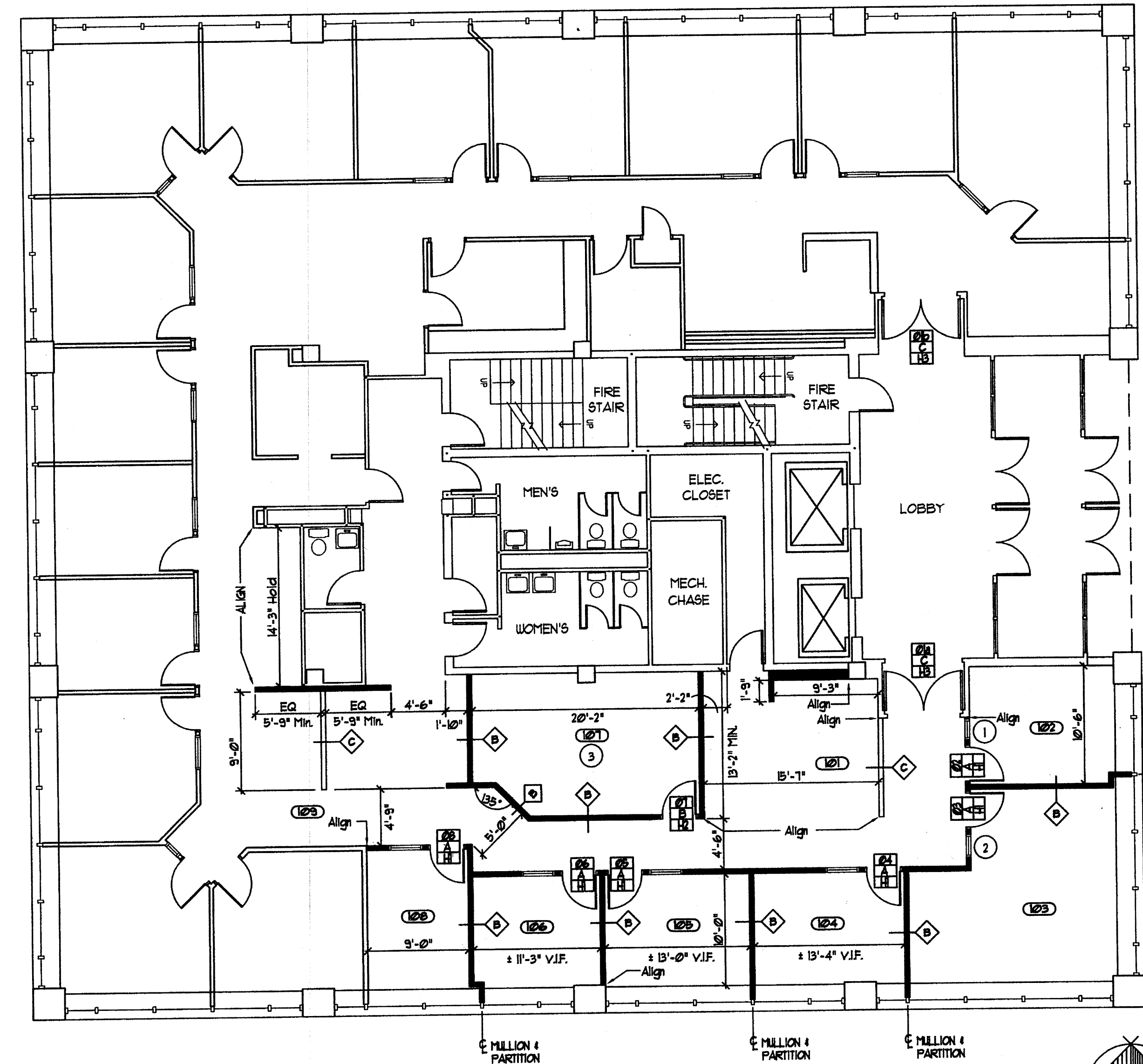




Wachovia Securities
Bldg. No. 113247
Two Canal Plaza - Plaza Level
Portland, Maine 04101

Wachovia Corporation
Corporate Real Estate Division
301 South College
Charlotte, NC 28216

Revisions:	Issued For Pricing 9-19-07
	Issued For Permit 9-24-07
Project Number:	505484
Designer:	DLW
Drawing Date:	9-04-07
Checker:	RRR
Drawing Scale:	1/8" = 1'-0"
Client Approval:	
Drawing Number:	A102
Sheet:	of



SYMBOL LEGEND

- EXISTING PARTITION TO REMAIN
- NEW DRYWALL PARTITION & TYPE DESIGNATOR SEE SCHEDULE THIS SHEET.
- NEW DOOR OPENING SYMBOL
- HARDWARE SET DOOR TYPE DOOR NUMBER
- KEYNOTE SYMBOL
- ELEVATION REFERENCE LETTER ELEVATION REFERENCE SHEET.
- ROOM NUMBER SYMBOL

PARTITION SCHEDULE

- PARTITION TYPE A:** INTERIOR PARTITION: 3 5/8" STL. STUDS, 24" O.C., 1/2" THK. DRYWALL EA. SIDE ALL TO UNDERSIDE OF EXISTG. FND. CEILING.
- PARTITION TYPE B:** INSULATED PARTITION: 3 5/8" STL. STUDS, 24" O.C., 1/2" THK. DRYWALL EA. SIDE & 3" THERMAFIBER BATT INSULATION IN STUD CAVITY. ALL TO UNDERSIDE OF EXISTG. FND. CEILING. ADDITIONALLY PROVIDE 4'-0" IL. PLENUM BLANKETS CTD. ATOP PARTITION.
- PARTITION TYPE C:** LOW PARTITION: 3 5/8" STL. STUDS, 24" O.C., 1/2" THK. DRYWALL EA. SIDE & ARTICULATED WOOD CAP, 4'-0" AFF TO TOP. PROVIDE CONCEALED, STL. TUBE OR ANGLE BRACINGS ANCHORED TO SLAB & LOOSE ENDS FOR RIGIDITY.

- NOTE: ALL NEW PARTITIONS NOT OTHERWISE DESIGNATED ON PLAN SHALL BE TYPE "A".
- NOTE: SEE TYPICAL PARTITION SECTIONS THIS SHEET.
- NOTE: ASSEMBLY OF ALL PARTITION TYPE "B" & "C" SHALL INCLUDE AN INTERNAL LAYER OF AFS "SOUNDBLOCK", AS FRD. BY VERTICAL WALL SOLUTIONS.
- NOTE: ALL PARTITION TERMINATIONS @ WINDOW MILLIONS SHALL INCL. A VERTICAL, ALUM. CLOSURE CHANNEL, OR 5/8" W/ 1/8" THK. CONTINUOUS ELASTOMERIC TAPE SEALANT, OR AS OTHERWISE REQD. TO MATCH.
- NOTE: CONTRACTOR SHALL FLD. VERIFY AND ADJUST THE REQD. PARTITION TYPE DEFINITIONS & SECTIONS AS REQD. TO ALIGN W/ AND MATCH EXISTG.

KEYNOTES

- 1 MAXIMIZE SIDELITE WITHIN AVAILABLE AREA. FIELD VERIFY.
- 2 SIDELITE WIDTH TO MIRROR 6A/E @ RM. 102.
- 3 EXTEND OVER PARTITION SOUND BATTS AS REQD. TO BLANKET ENTIRE CEILING AREA.

DOOR AND FRAME TYPES

- TYPE "A": 3'-0" x 7'-0" x 1 3/4" THK. SOLID CORE, FLUSH PANEL, STANGRADE, BIRCH VENEER DOOR. SET IN A SOLID BIRCH FRAME WITH ADJACENT CLR. GL. SIDELITE. SEE TYP. ELEVATION THIS SHEET.
- TYPE "B": SAME AS TYPE "A", W/O SIDELITE.
- TYPE "C": PR. ± 3'-0" x 8'-0" x 1 3/4" THK. SOLID CORE, FLUSH PANEL, 45 MIN.-RATED, STANGRADE, BIRCH VENEER DOORS W/ 5/16" THK. FIRE-RATED GLASS VIBROLITES, AS FRD. BY EGGERS INDUSTRIA. SET IN EXISTG. RATED, 1 1/2" FRAME, FLD. VERIFY SIZE & PREP REQTS. GLASS SHALL BE "FIRELITE PLUS" AS FRD. BY TECHNICAL GLASS PRODUCTS. SIZE OF EA LITE SHALL BE MAX ALLOWABLE THQ SQ. IN. CONFIGURATION TO FOLLOW.

HARDWARE SET SCHEDULE

- SET H1: 1/2" PR. BUTT HINGES, CYLINDRICAL LEVER LATCHSET, COAT HOOK & FLOOR STOP.
- SET H2: 5/8" SIMILAR TO SET "H1", NO COATHOOK.
- SET H3: 3" PR. BUTT HINGES, CYLINDRICAL LEVER LOCKSET @ ACTIVE LEAF, AUTO-FLUSH-BOLTS @ INACTIVE LEAF, CLOSERS, CO-ORDINATOR @ FLOOR STOPS.

HARDWARE SPECIFICATIONS

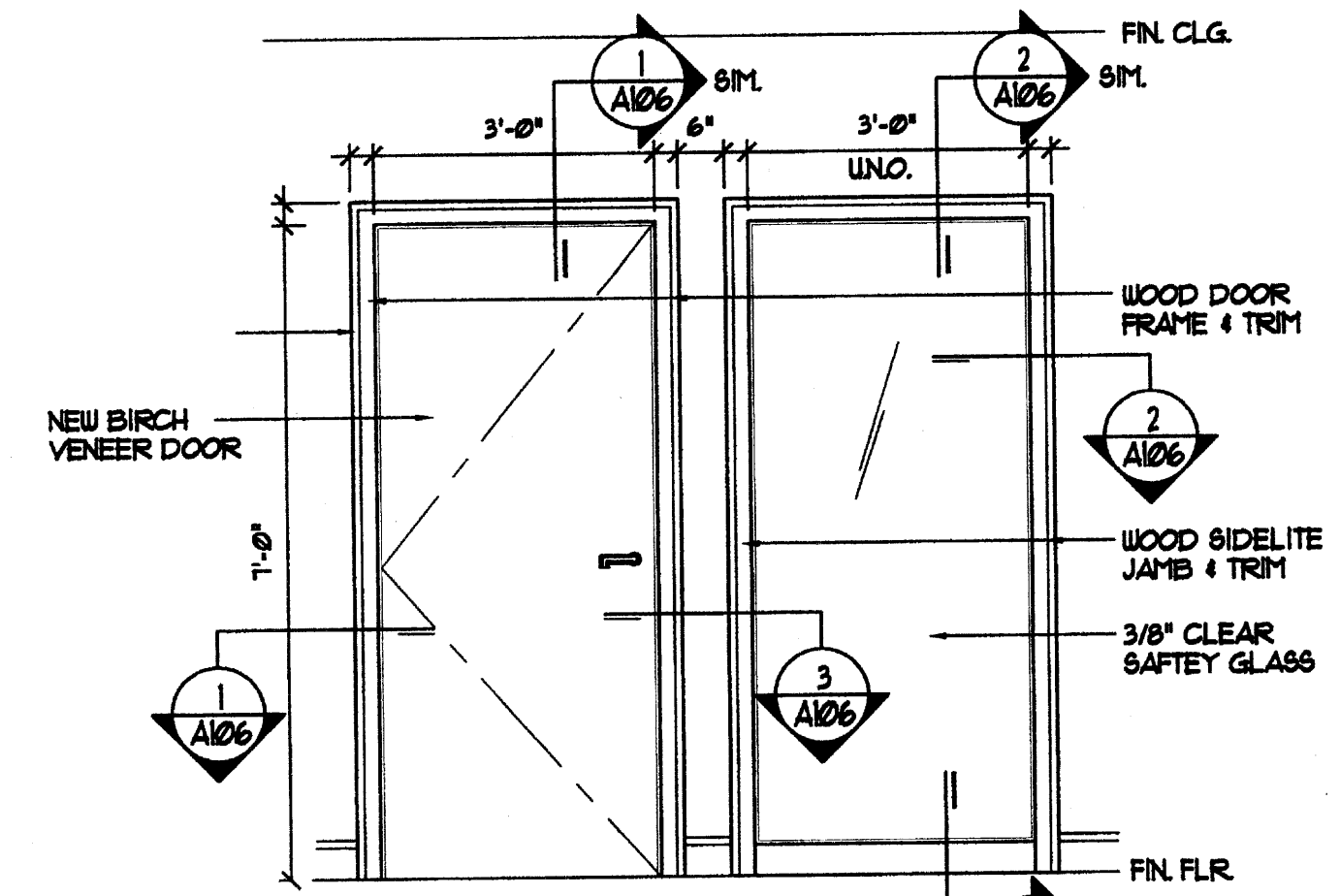
- BUTT HINGES: HAGER, BB TYPE, 4 1/2 x 4 1/2, USA OR EQUAL.
- CYLINDRICAL LATCHSETS: SCHLAGE, "D" SERIES, HEAVY DUTY, W/ RHODES TRIM USA OR EQUAL.
- CYLINDRICAL LOCKSETS: SCHLAGE, "D" SERIES, HEAVY DUTY, W/ RHODES TRIM USA OR EQUAL.
- CLOSERS: LCN 1460 SERIES OR EQUAL, AS REQD. BY DOOR FINISH.
- FLOOR STOPS: ROCKWOOD 411, DOE TYPE, USA FURNISH RISER INSERTS AS REQUIRED.
- COAT HOOKS: IVES # 405-14, USA FINISH.

DOOR FRAME AND HARDWARE NOTES:

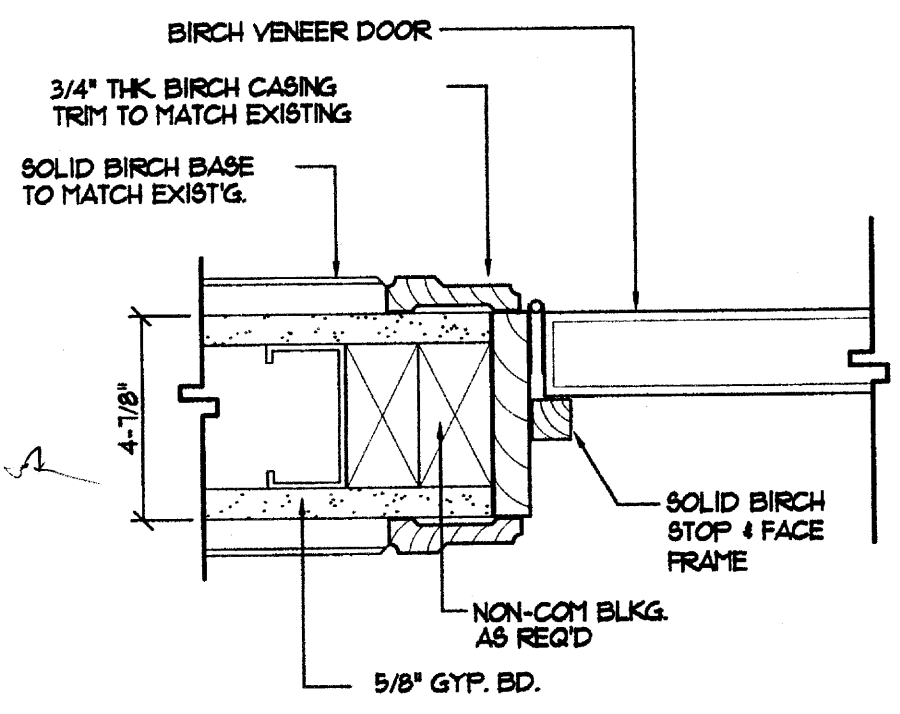
- 1 CONTRACTOR SHALL SUBMIT DOOR, FRAME & HARDWARE SCHEDULES & SHOP DUGS FOR APPROVAL.
- 2 ALL NEW BIRCH DOORS SHALL BE VENEER CUT & FINISH TO MATCH EXISTG. WACHOVIA SUITE DOORS.
- 3 SEE TYPICAL DOOR, FRAME & SIDELITE DETAILS THIS SHEET.
- 4 KEY ALL NEW LOCKSETS TO LANDLORD'S HOUSE SYSTEM AS REQUIRED.
- 5 NEW SOLID WOOD, DOOR & SIDELITE FRAME ASSEMBLIES & ALL RELATED TRIM SHALL BE CONFIGURED TO MATCH THE EXISTG. WOOD CLAD RM UNITS WITHIN THE WACHOVIA SUITE IN APPEARANCE & FINISH.

GENERAL NOTES

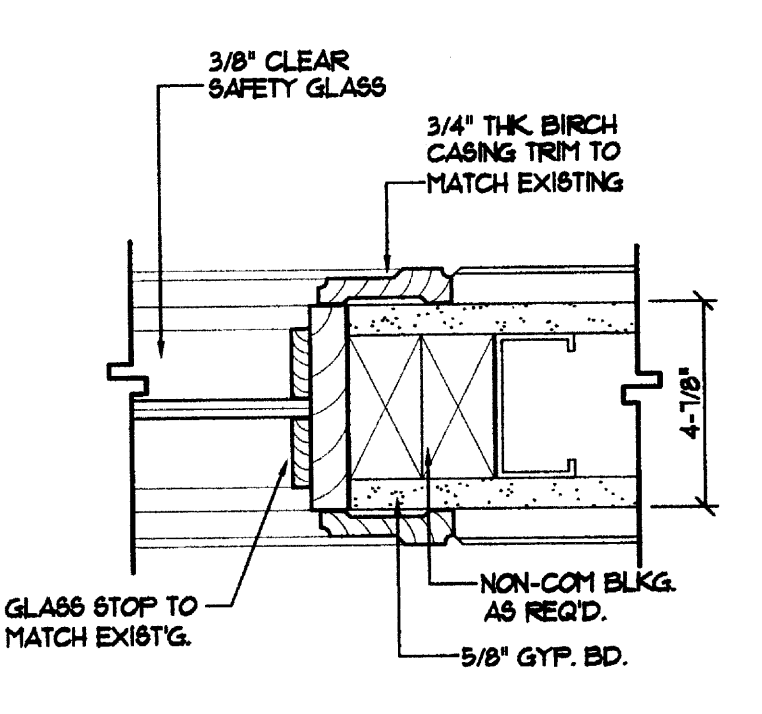
- 1 CONTRACTOR SHALL VERIFY ALL DIMENSIONS & EXISTING CONDITIONS @ THE SITE & ADVISE THE ARCHITECT OF ANY DISCREPANCIES, DELETIONS, AND / OR ADDITIONS PRIOR TO PROCEEDING WITH ANY PHASE OF THE WORK.
- 2 UNLESS OTHERWISE NOTED ON PLAN, ALL DIMENSIONS SHALL BE ASSUMED AS HOLD DIMENSIONS. FIELD CONFLICTS RESULTING IN MORE OR LESS SHALL BE COORDINATED WITH ARCHITECT PRIOR TO PROCEEDING.
- 3 ALL PARTITIONS NOT OTHERWISE DESIGNATED ON PLAN, OR ASSUMED BY CONTINUATION, SHALL BE TYPE "A".
- 4 PRIOR TO SUBMITTING A PROPOSAL, ALL CONTRACTORS SHALL VISIT THE SITE & FAMILIARIZE THEMSELVES WITH EXISTING CONDITIONS & SATISFY THEMSELVES AS TO THE NATURE & SCOPE OF THE WORK & ANY DIFFICULTIES THAT ATTEND TO ITS EXECUTION.
- 5 CONTRACTOR SHALL PATCH AND/OR OTHERWISE REPAIR ALL EXISTG. SURFACES TO "AS NEW" APPEARANCE AT AREAS OF DEMOLITION OR WORK PERFORMED BY OTHERS AND PREP SURFACES TO RECEIVE SPEC'D. NEW FINISHES.
- 6 EXISTG. HORIZONTAL TRIM-BLINDS SHALL REMAIN THRU-OUT. CONTRACTOR SHALL INSPECT, REPLACE SLATS W/ OR HARDWARE WHERE NECESSARY, THOROUGHLY CLEAN & TAKE ALL NECESSARY PRECAUTION TO PROTECT THRU-OUT THE DURATION OF THE PROJECT.



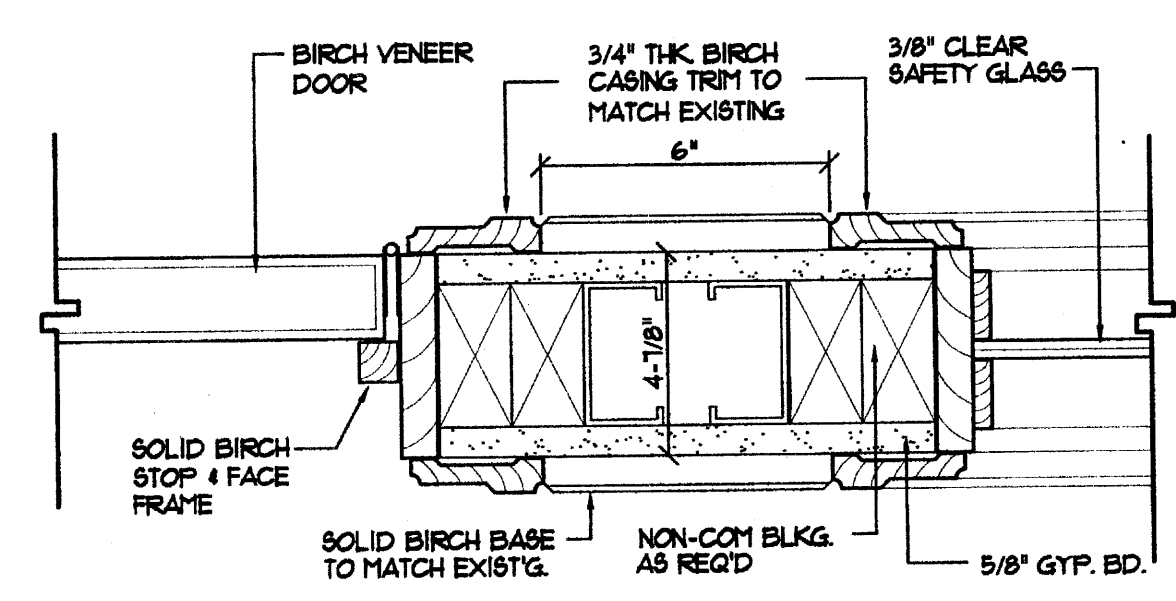
TYP. DOOR/SIDELITE ELEVATION
SCALE: 1/2" = 1'-0"



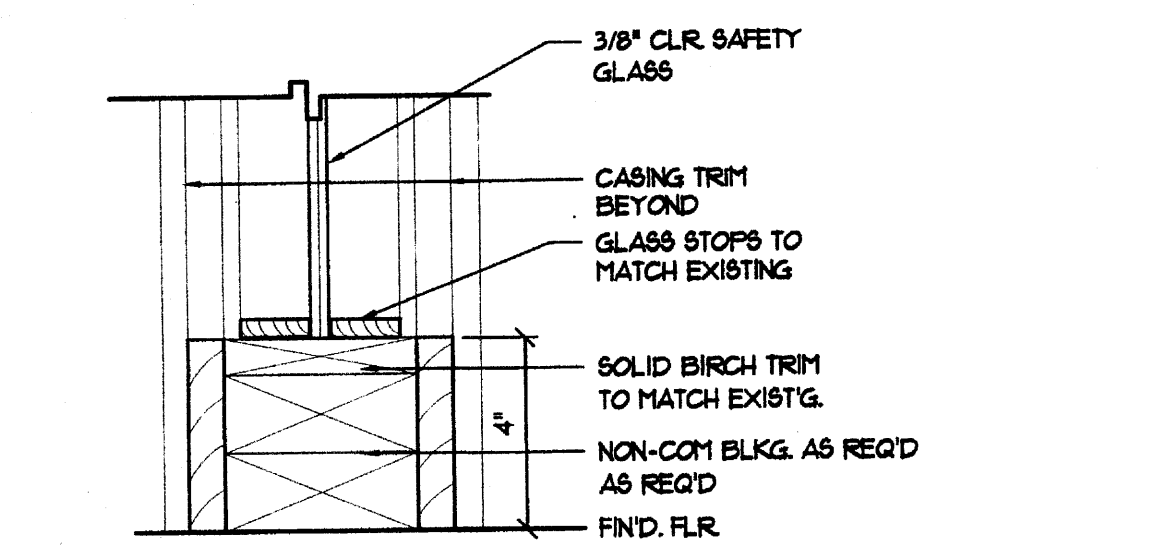
1 TYP. DOOR JAMB SECTION
SCALE: 3/4" = 1'-0"
NOTE: HEAD SIMILAR



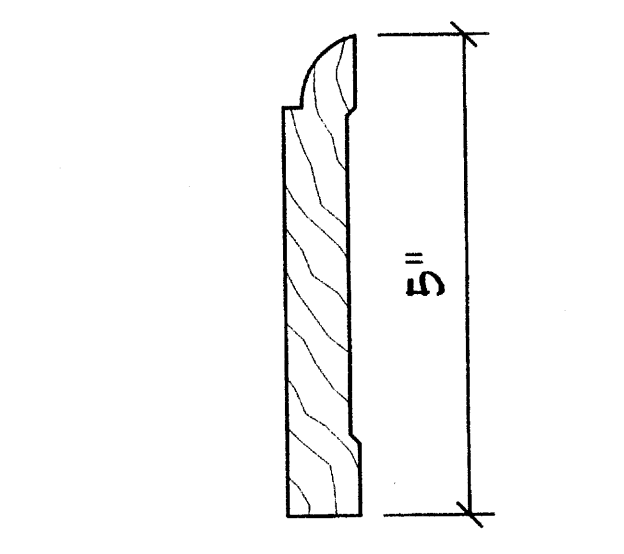
2 TYP. SIDELITE JAMB SECTION
SCALE: 3/4" = 1'-0"
NOTE: HEAD SIMILAR



3 TYP. DOOR/SIDELITE JAMB SECTION
SCALE: 3/4" = 1'-0"



4 SIDELITE SILL SECTION
SCALE: 3/4" = 1'-0"

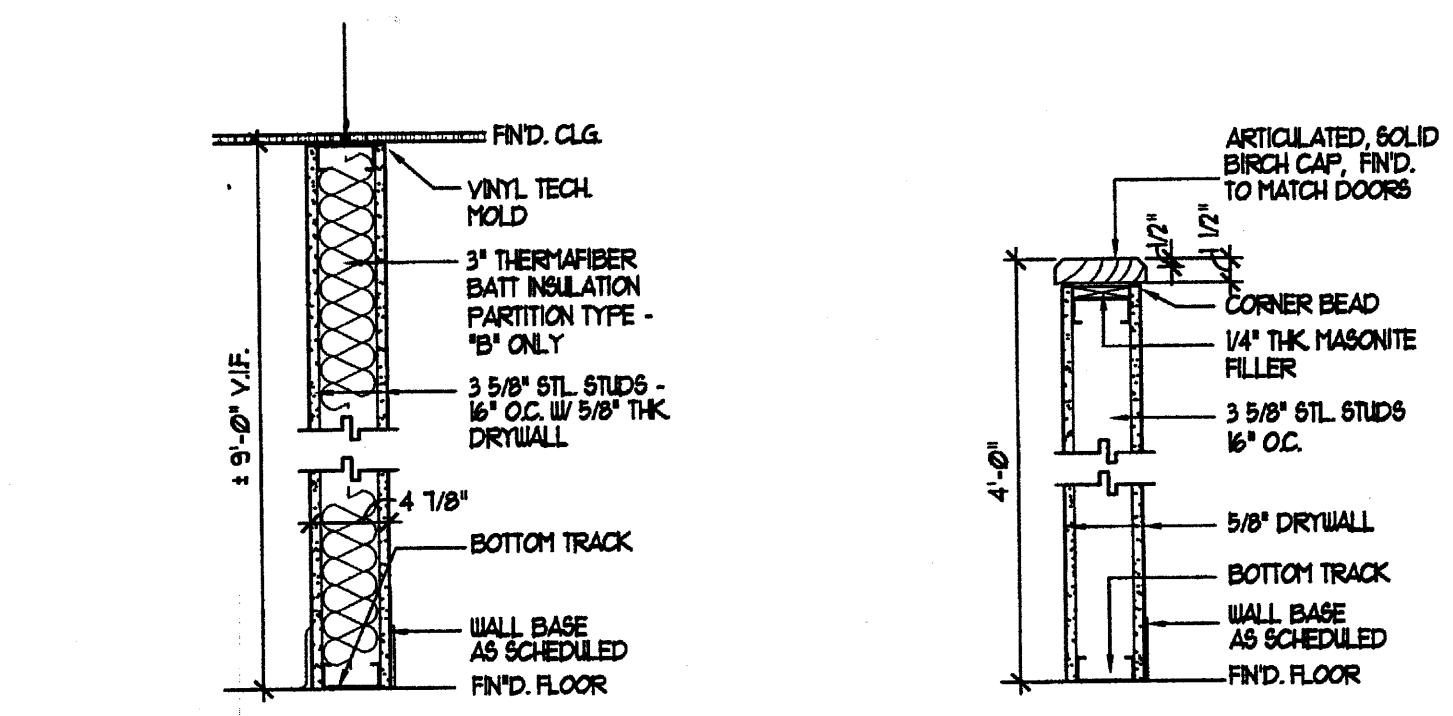


WOOD BASE PROFILE
SCALE: HALF SCALE

CONSTRUCTION PLAN
SCALE: 1/8" = 1'-0"

GENERAL DEMOLITION NOTES

- 1 THE GEN. CONTRACTOR SHALL FURNISH ALL LABOR & MATERIALS AS REQD. TO COMPLETE DEMOLITION & REMOVAL OF ALL ITEMS AS NECESSARY.
- 2 THE G.C. SHALL REPORT TO MCCORMICK ARCHITECTS ANY AND ALL CONDITIONS WHICH MAY INTERFERE W/ OR OTHERWISE AFFECT OR PREVENT THE PROPER EXECUTION & COMPLETION OF THE WORK OF THIS CONTRACT.
- 3 CONTRACTOR SHALL REMOVE ACOUSTIC TILE THRU-OUT THE AREA OF WORK.
- 4 CONTRACTOR SHALL REMOVE ALL EXISTG. PARTITIONS, DOORS, FRAMES & HARDWARE THRU-OUT THE AREA OF WORK.
- 5 CONTRACTOR SHALL REMOVE EXISTG. CARPET, RUBBER BASE, WOOD BASE & ALL ADHESIVE RESIDUE THRU-OUT THE AREA OF WORK.
- 6 WINDOW BLINDS SHALL REMAIN @ ALL PERIMETER, EXT. WINDOWS. CONTRACTOR SHALL REMOVE, & OR ADEQUATELY PROTECT FOR THE PROJECT DURATION.
- 7 CONTRACTOR SHALL REMOVE EXISTG. SUPPLY AIR DIFFUSERS & RETURN AIR GRILLES. SAVE FOR RE-USE.
- 8 CONTRACTOR SHALL REMOVE ALL EXISTG. NON-WACHOVIA WIRING & DEVICES.
- 9 CONTRACTOR SHALL REMOVE ALL EXISTG. LLD FINISHES IN THE REAR VESTIBULE & EGRESS CORRIDOR.
- 10 CONTRACTOR SHALL RETURN ANY/ALL ITEMS REMOVED DURING DEMOLITION TO ATTIC STOCK AS DIRECTED BY THE LANDLORD.



INT. PARTITION - TYPE "A"
SCALE: 1" = 1'-0"

INSULATED PARTITION - TYPE "B"
SCALE: 1" = 1'-0"

LOW PARTITION - TYPE "C"
SCALE: 1" = 1'-0"

