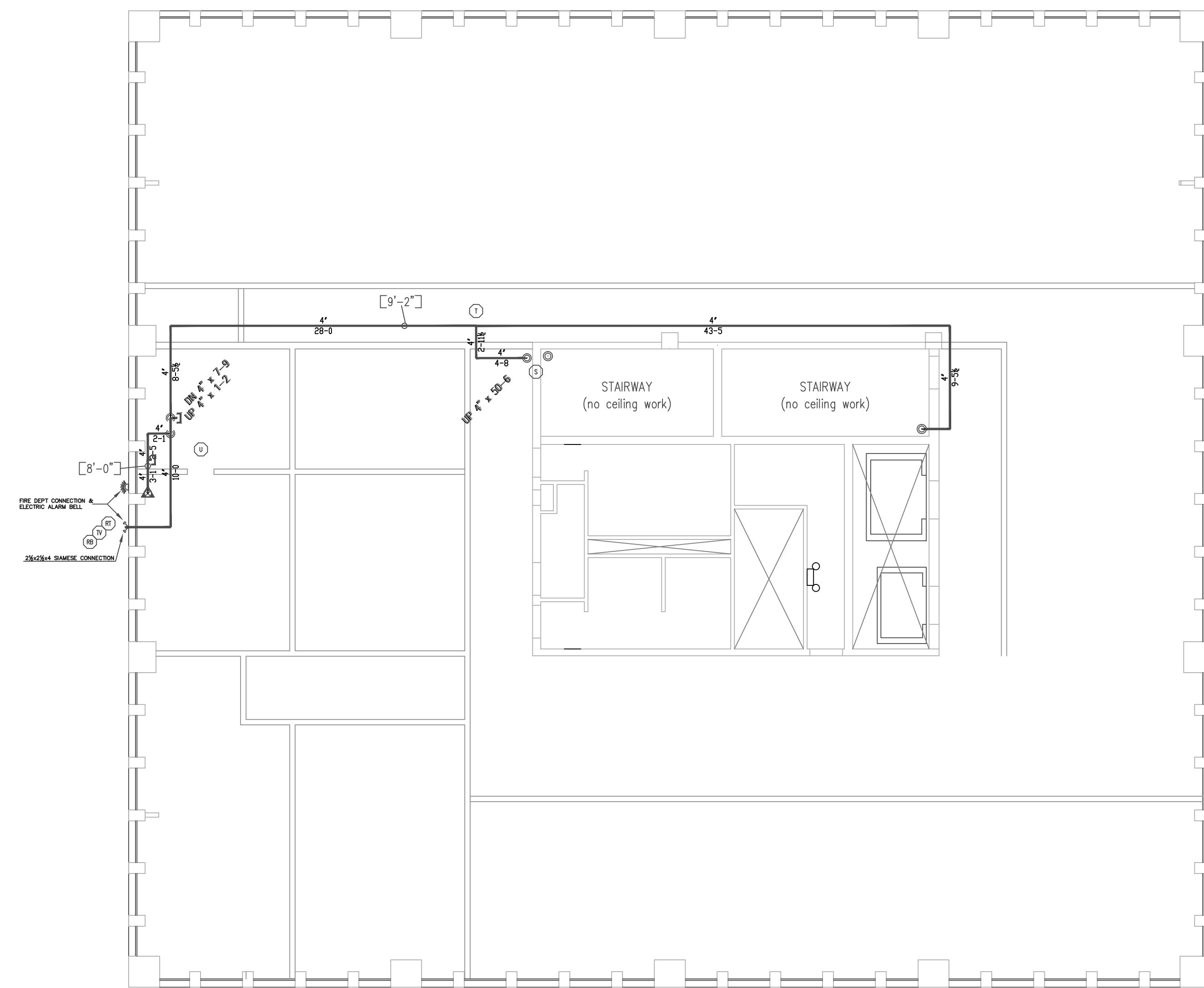
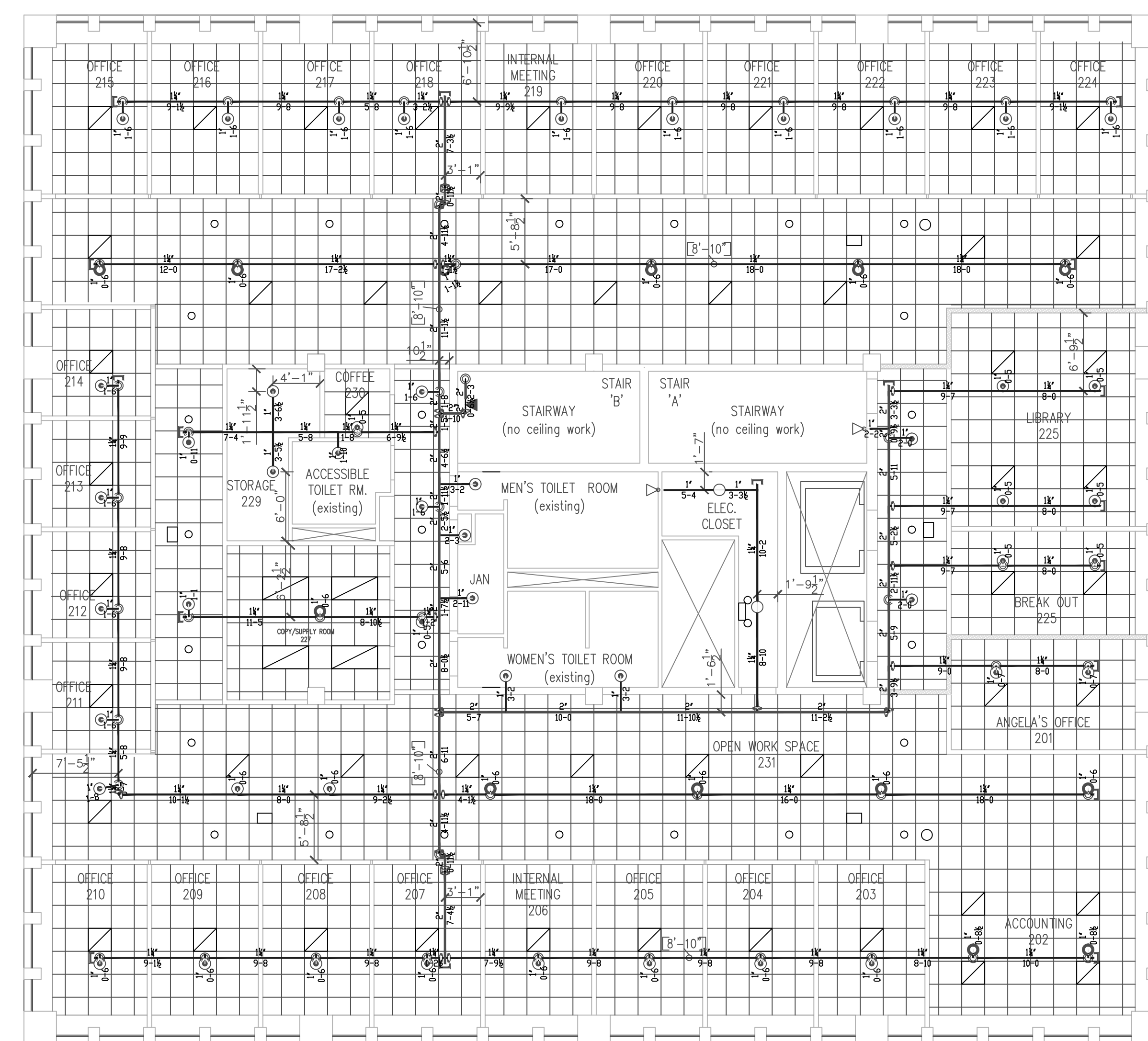


GENERAL NOTES:

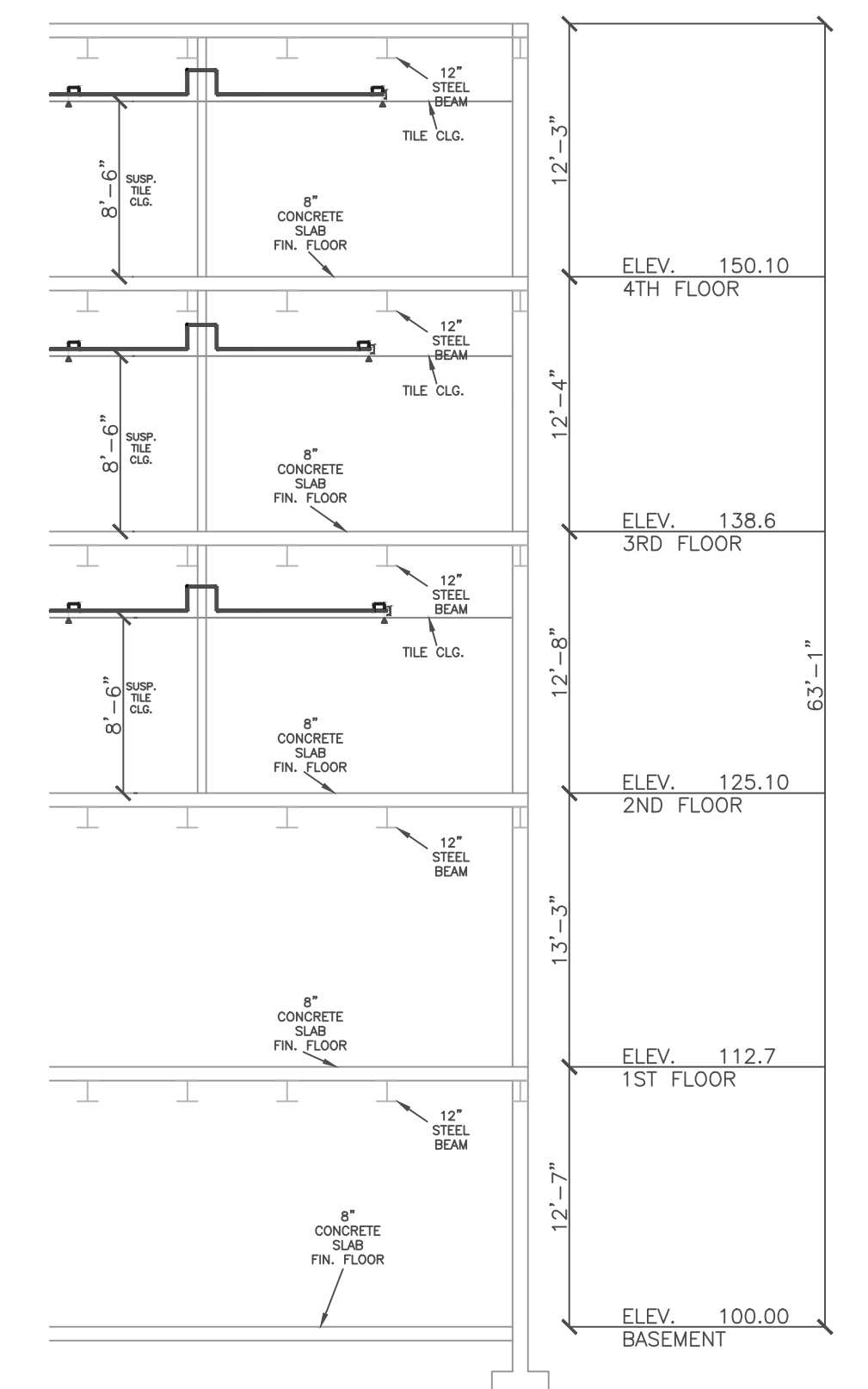
- IT IS THE BUILDING OWNERS RESPONSIBILITY TO PROVIDE ADEQUATE HEAT FOR ALL AREAS IN THE BUILDING PROTECTED BY WET SPRINKLER SYSTEMS AND FOR ALL WATER FILLED SUPPLY PIPES, VALVES AND SYSTEM RISERS IN ALL DRY PIPE SPRINKLER SYSTEMS.
- ALL NEW PIPING IS TO BE HYDROSTATICALLY TESTED AT NOT LESS THAN 200 PSI FOR 2 HOURS, OR AT 50 PSI IN EXCESS OF THE MAXIMUM PRESSURE, WHEN THE MAXIMUM PRESSURE TO BE MAINTAINED IS IN EXCESS OF 150 PSI. (PER NFPA 13)
- WHETHER OR NOT INDICATED ON DRAWINGS, THE FOLLOWING ITEMS ARE TO BE PROVIDED:
 - SPARE HEAD CABINET WITH WRENCH (NFPA 13).
 - PROVISIONS FOR FLUSHING CONNECTIONS AND DRAINING OF ALL PIPE.
 - INSPECTORS TEST CONNECTION SHALL BE PROVIDED FOR EACH SYSTEM
 - A) FOR WET PIPE SYSTEMS SEE NFPA 13)
 - B) FOR DRY PIPE SYSTEMS SEE NFPA 13)
 - AIR PRESSURE SHALL BE MAINTAINED ON ALL DRY PIPE SYSTEMS BY AN APPROVED AUTOMATIC AIR COMPRESSOR OR PLANT AIR SYSTEM SPECIFICALLY APPROVED FOR AND CAPABLE OF AUTOMATICALLY MAINTAINING THE REQUIRED AIR PRESSURE.
 - GRIDDED WET PIPE SYSTEMS SHALL BE PROVIDED WITH A RELIEF VALVE NOT LESS THAN 1/4" IN SIZE. (NFPA 13).
- ALL PIPE 1" SHALL BE SCHEDULE 40 STEEL WITH MALLEABLE IRON FITTINGS.
- ALL PIPE 1 1/2" AND LARGER, SHALL BE SCHEDULE 10 STEEL, WITH GROOVED COUPLINGS AND VICTAULIC™ MECHANICAL FITTINGS OR EQUIVALENT.
- ALL MECHANICAL TRADES ARE TO COORDINATE THEIR WORK WITH SPRINKLER WORK AS SHOWN ON THESE PLANS.
- ALL HANGERS AND LOCATIONS ARE TO BE IN ACCORDANCE WITH N.F.P.A. 13.
- ALL SPRINKLER HEADS IN SUSPENDED CEILING TILES ARE TO BE LOCATED IN THE CENTER OF THE NARROW DIMENSION OF THE ACOUSTICAL CEILING PANEL.
- ALL PIPING IS TO BE PITCHED IN ACCORDANCE WITH N.F.P.A. 13.
- HYDRAULIC DATA REFERENCE POINTS: (25)
- CENTER LINE OF PIPE ABOVE FINISH FLOOR [12'-0"] BELOW DECK (12')
- PROTECTIVE CAPS ARE TO REMAIN ON THE SPRINKLER HEADS UNTIL AFTER CEILINGS ARE INSTALLED.
- THE SCOPE OF WORK UNDER THIS CONTRACT IS TO DESIGN AND INSTALL A WET SPRINKLER SYSTEM PER NFPA 13. WORK IS LIMITED TO THE WORK SHOWN ON THESE DOCUMENTS.
- OWNER: EAST BROWN COW
100 COMMERCIAL STREET
PORTLAND, ME 04101
775-2252
- ARCHITECT: ARCHETYPE - PORTLAND, ME



BASEMENT FLOOR



2ND FLOOR - 8603 S.F.
SCALE = 1/8" = 1'-0"
FIN. FLOOR ELEV. = 125.10
ALL CLGS @ 8'-6" AFF U.N.



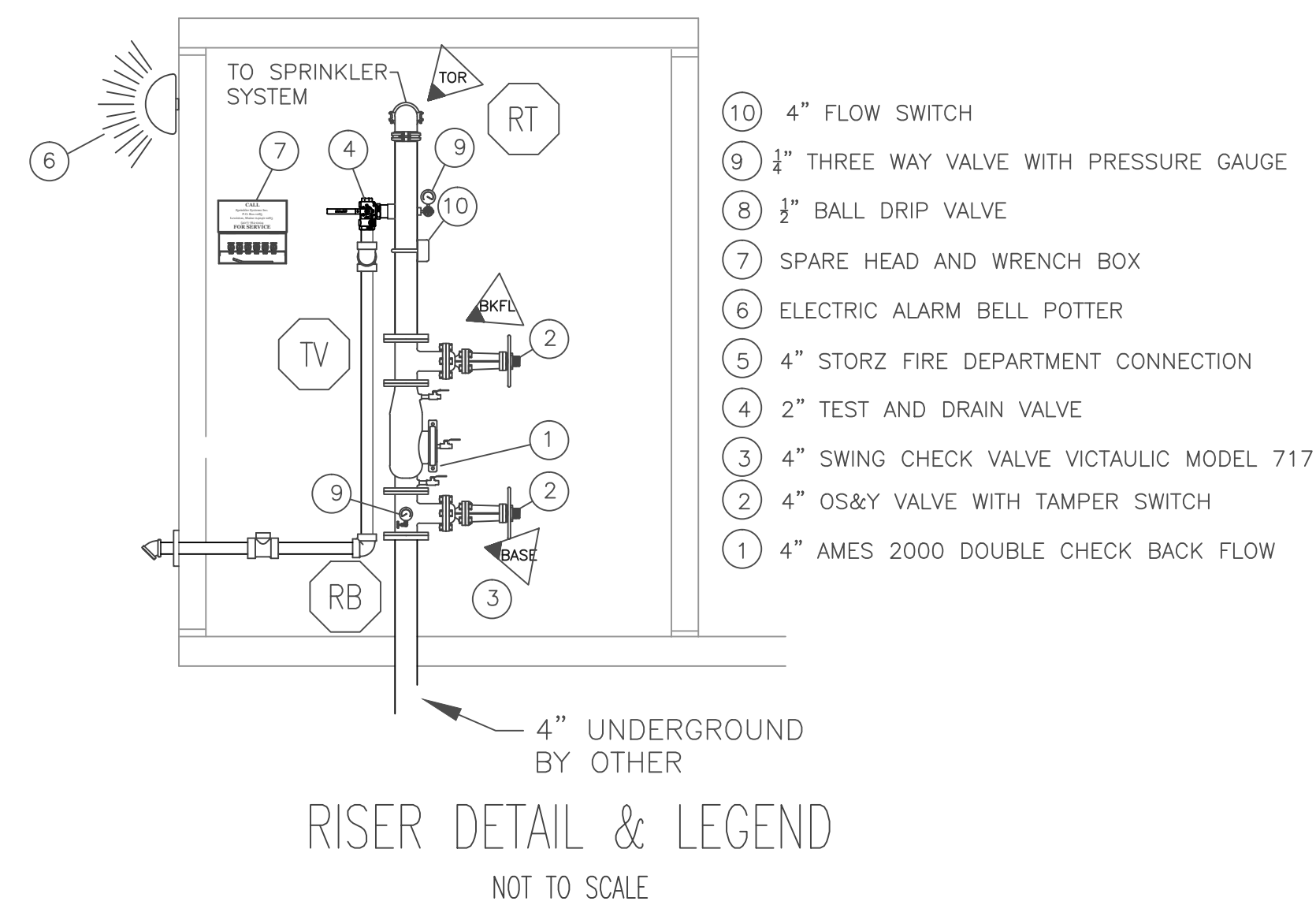
PARTIAL SECTION VIEW "A"

HYDRAULIC NODE SUMMARY

RB TO X1	4" X 50.0 CLDI E,G,T	ELEV. = 101.9
X1 TO X2	12" X 350.0 CLDI E,2T,H100	ELEV. = 101.9
X2 TO X3	12" X 500.0 CI T	ELEV. = 101.9
X3 TO TEST	10" X 650.0 CI	ELEV. = 117.0

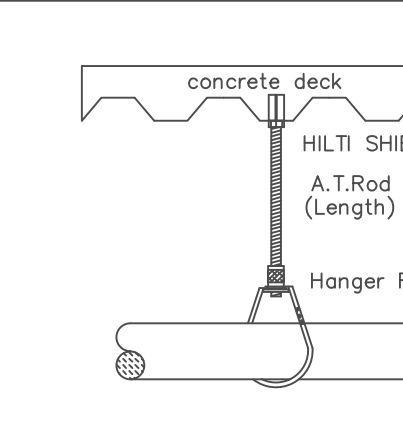
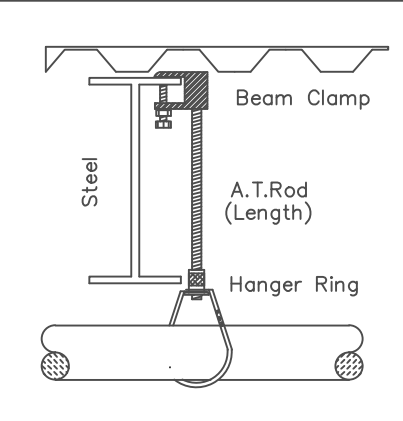
WATER DATA

STATIC 90 PSI
RESIDUAL 88 PSI
FLOW 1758 GPM
BY PORTLAND WATER DISTRICT
DATE 06/24/08
HYDRANT ELEV: 117.00' +/-



RISER DETAIL & LEGEND
NOT TO SCALE

1. Type of Hazard	LIGHT/ORDINARY	2. Deflector Distance	PER SPEC
3. Pipe Type Used	BLK SCH 10/40	4. Sprinkler Area	PER SPEC
5. Type of Construction	NON-COMBUSTIBLE		
6. Maximum Spacing Allowed	PER NFPA 13		
7. PIPE SIZING METHOD: PIPE SCHEDULE	<input type="checkbox"/>	HYDRAULICALLY CALCULATED	<input checked="" type="checkbox"/>
8. ALL HANGERS AND LOCATIONS TO BE IN ACCORDANCE WITH N.F.P.A. PAMPHLET NO. 13			
9. HIGH DEGREE TEMPERATURE SPRINKLER HEADS TO BE INSTALLED IN ACCORDANCE WITH N.F.P.A. PAMPHLET NO. 13			



HANGER DETAILS

HANGERS	
AS SHOWN IN DETAIL	

ABBREVIATIONS		
B	Bottom of Beam	
D	Bottom of Deck	
P	Bottom of Pipe	
HV	Hip to Valve	
N.A.C.	Nipple and Cap	
NIC	Net in Contact	
NT	Net to Scale	
OB	Open Bar Joints	
PRV	Pressure Red Valve	
RM	Roof Manifold	
SP	Standpipe	
TDB	Top of Beam	
TOP	Top of Pipe	
TOS	Top of Steel	
UN	Unless Otherwise Noted	
CL	Centerline	
NES	No Automatic Sprinklers	
OTA	Open to Above	

CONTRACT RESPONSIBILITIES		
ITEM	FPC	OTHERS
STREET COVN		
LUDD MAN		
EXCAVATION		
FLUSHING		
WIRING		
PAINTING		
TAMPER SWITCHES		
FLOW SWITCHES		
STREET COVN		

SPRINKLER HEAD LEGEND										
SYMBOL	MAKE	MODEL	SIN	FINISH	TYPE	TEMP	NPT	ORIFICE	K-FACTOR	TOTAL
	RELIABLE	F1FR 56	RA1414	WHITE	SEM-REC PENDENT	155° F	1/2"	1/2"	5.6	143
	RELIABLE	F1FR 56	R4842	WHITE	SEM-REC PENDENT	155° F	3/4"	17/32"	8.0	42
	RELIABLE	F1FR 56	RA1435	BRONZE	FRONT SIDEWALL	155° F	1/2"	1/2"	5.6	6
	RELIABLE	F1FR 56	RA1435	BRONZE	VERTICAL SIDEWALL	155° F	1/2"	1/2"	5.6	5
	RELIABLE	F1FR 56	RA1414	BRONZE	UPRIGHT	155° F	1/2"	1/2"	5.6	6
TOTAL										202

SUBMITTALS	
SENT TO	DATE RECEIVED
I.S.O.	
F.M.	
L.M.	
I.R.I.	
L.A.	
STATE FIRE	
LOCAL FIRE	
LOCAL WATER	
OWNER	

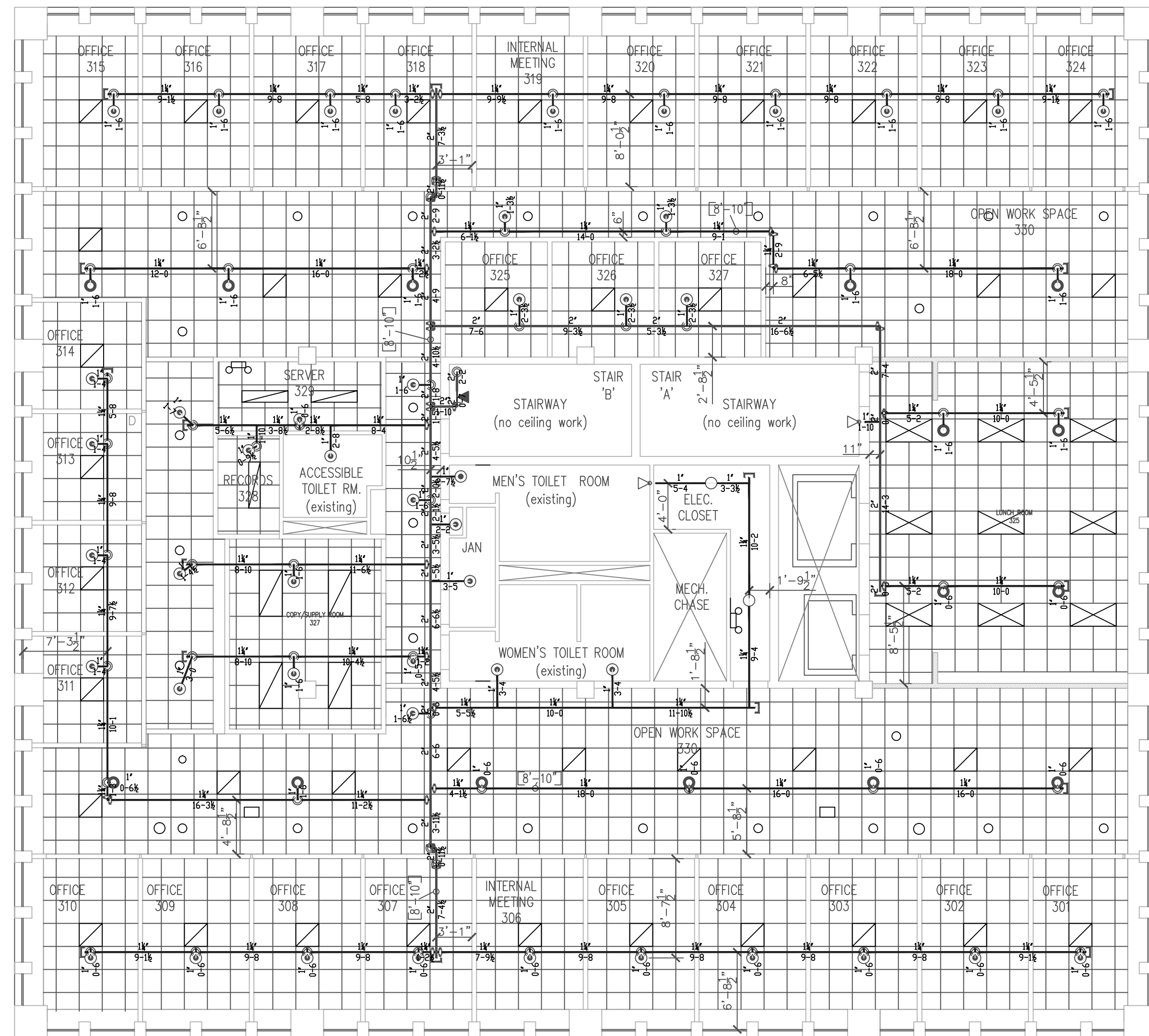
LICENSE# 093 R.M.S.# 278 PERMIT # ????

P.O. BOX 1285 LEWISTON MAINE 04243-1285

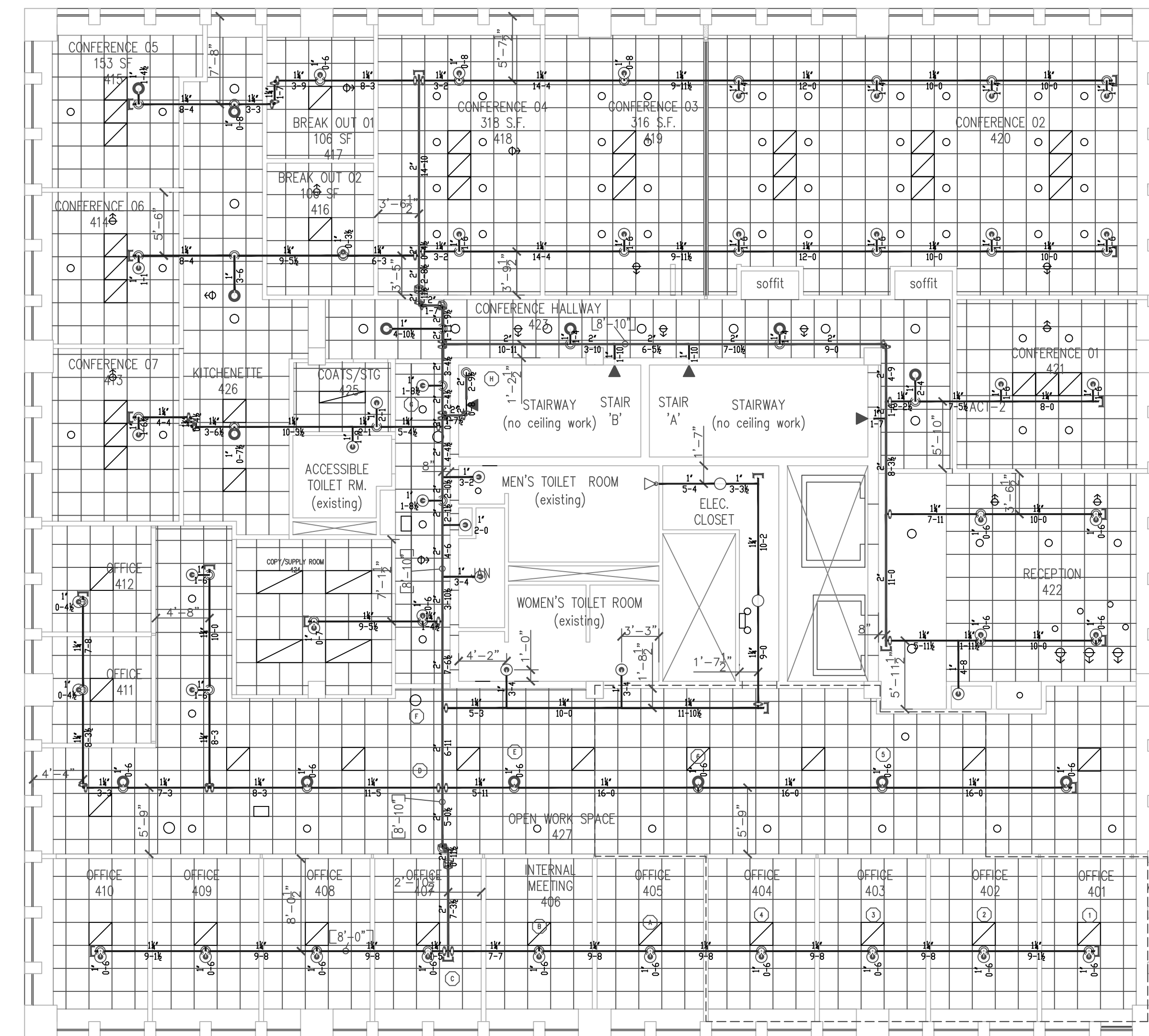
NORMAN HANSON DETROY		2 CANAL PLAZA PORTLAND, MAINE 04101	
CONTRACT WITH		MONAGHAN WOODWORKS	
SYSTEM TYPE	NO.	DATE	DESCRIPTION
WET	<input checked="" type="checkbox"/>		
DRY	<input type="checkbox"/>		
DELUGE	<input type="checkbox"/>		
REACTION	<input type="checkbox"/>		
ME LIFE	<input type="checkbox"/>		
HYDRO-PRO	<input type="checkbox"/>		

SCALE	AS NOTED
DRAWN BY	RDO
CHECKED BY	SEG
DATE	5/9/2013
TOTAL SPKRS ON JOB	202
SHEET#	1 of 2
JOB#	13011

SUBMITTAL COPY



3RD FLOOR - 8603 S.F.
 SCALE = 1/8" = 1'-0"
 FIN. FLOOR ELEV. - 138.60
 ALL CLGS @ 8'-6" AFF U.N.



4TH FLOOR - 8603 S.F.
 SCALE = 1/8" = 1'-0"
 FIN. FLOOR ELEV. - 150.10
 ALL CLGS @ 8'-6" AFF U.N.

DESIGN AREA 1
 .10/900+100 (HYDRAULICALLY
 MOST REMOTE)

DESIGN AREA 1

HYDRAULIC DATA NAMEPLATE
 This Building is protected
 by a hydraulically designed
 Automatic Sprinkler System
 Location 4TH FLOOR OFFICES
 No. of Sprinkler 6
 Basis of design
 1. Density .10 gpm/ft²
 2. Design area 900 ft²
 of discharge
 System Demand @ BASE OF RISER
 1. Water Flow Rate
 @ Base/Pump 144.014 gpm
 2. Residual Pressure
 @ Base/Pump 75.421 psi
 CUSHION = 20.42 psi
 (HYDRAULICALLY MOST REMOTE)

SUBMITTAL COPY

SPRINKLER HEAD LEGEND											
SYMBOL	MAKE	MODEL	SIN	FINISH	TYPE	TEMP	NPT	ORIFICE	K-FACTOR	3RD	4TH
⊙	RELIABLE	F1FR 56	RA1414	WHITE	SEMI-REC PENDENT	155° F	1/2"	1/2"	5.6	46	46
⊙	RELIABLE	F1FR 56	R4842	WHITE	SEMI-REC PENDENT	155° F	3/4"	17/32"	8.0	14	14
⊙	RELIABLE	F1FR 56	RA1435	BRONZE	SEMI-REC PENDENT	155° F	1/2"	1/2"	5.6	3	4
⊙	RELIABLE	F1FR 56	RA1435	BRONZE	SIDEWALL VERTICAL	155° F	1/2"	1/2"	5.6	3	1
⊙	RELIABLE	F1FR 56	RA1414	BRONZE	UPRIGHT	155° F	1/2"	1/2"	5.6	2	2
TOTAL										53	60

5 4 3 2 1 0 5 10 15 20

LICENSE # 093 278 R.M.S.# PERMIT # ????

P.O. BOX 1285
 LEWISTON MAINE
 04243-1285

NORMAN HANSON DETROY
 2 CANAL PLAZA
 PORTLAND, MAINE 04101

CONTRACT WITH MONAGHAN WOODWORKS

SYSTEM TYPE	NO.	DATE	REVISIONS DESCRIPTION
WET			
DRY			
DELUGE			
PREACTION			
ME. LIFE			
HYDRO-PRO			

SCALE AS NOTED
 DRAWN BY RDO
 CHECKED BY SEG
 DATE 5/9/2013
 TOTAL SPR'S ON JOB 202
 SHEET# 2 of 2
 JOB# 13011