

| REVISION | DESCRIPTION                          | DATE      |
|----------|--------------------------------------|-----------|
| 0        | ISSUED FOR REVIEW & APPROVAL         | 5/10/2013 |
| 1        | PORTLAND, ME FIRE PREV OFFICE REVIEW | 5/13/2013 |

| DATE      | DESCRIPTION                          |
|-----------|--------------------------------------|
| 5/10/2013 | ISSUED FOR REVIEW & APPROVAL         |
| 5/13/2013 | PORTLAND, ME FIRE PREV OFFICE REVIEW |

| REVISION | DESCRIPTION                          | DATE      |
|----------|--------------------------------------|-----------|
| 0        | ISSUED FOR REVIEW & APPROVAL         | 5/10/2013 |
| 1        | PORTLAND, ME FIRE PREV OFFICE REVIEW | 5/13/2013 |

| DATE      | DESCRIPTION                          |
|-----------|--------------------------------------|
| 5/10/2013 | ISSUED FOR REVIEW & APPROVAL         |
| 5/13/2013 | PORTLAND, ME FIRE PREV OFFICE REVIEW |

# CUNNINGHAM

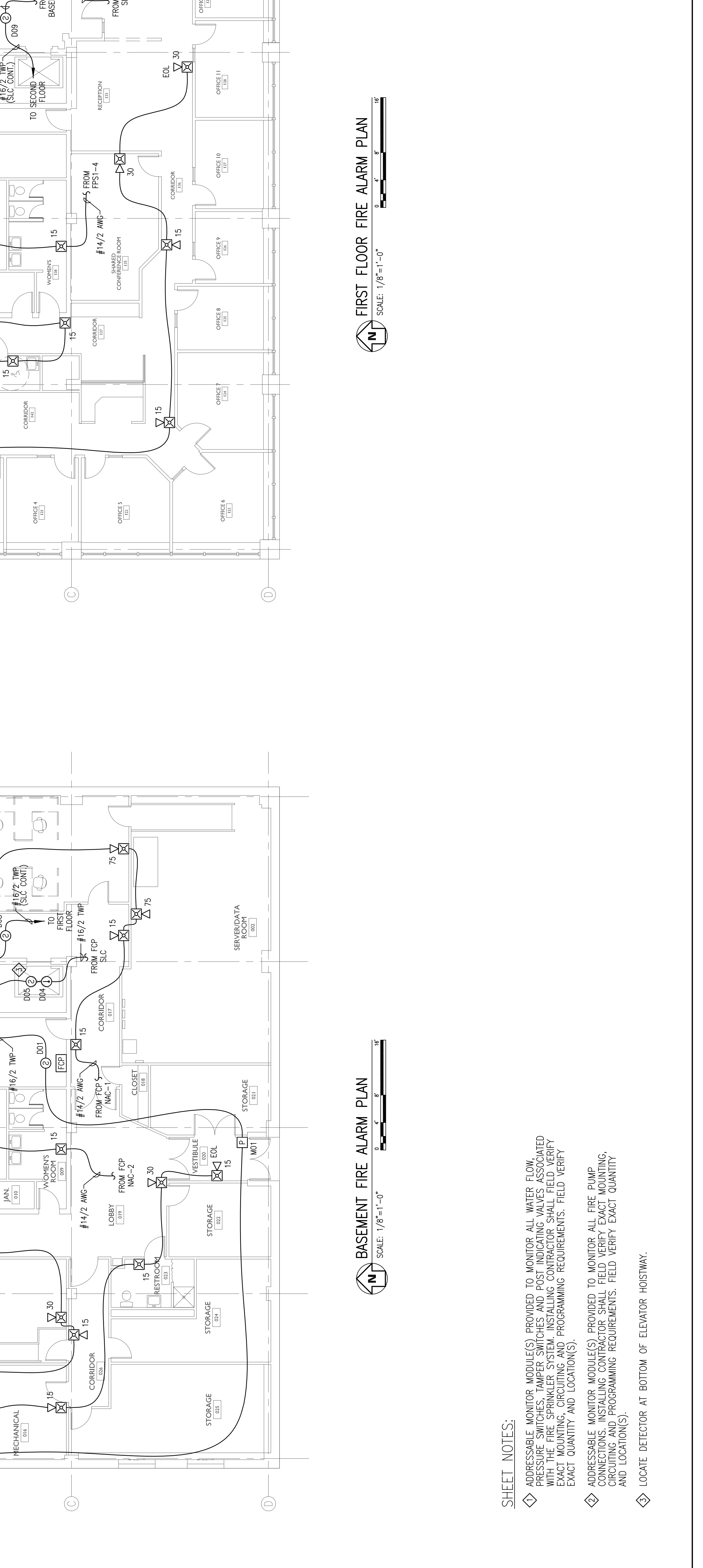
Security Systems  
 10 Princes Point Road, Yarmouth, Maine 04096  
 Office: 207.846.3350 • Fax: 207.846.6080

## NORMAN HANSON DETROY 2 CANAL PLAZA PORTLAND, MAINE 04101 BASEMENT & FIRST FLOOR FIRE ALARM PLAN

UNICAD Inc.  
 578 W. 40th St.  
 Portland, ME 04102  
 Office: 801.865.0410  
 www.unicad.net  
 Fire Alarm Design & Drafting Services

| SCALE      | REVISION | DATE     | CHECKED                       | DRAWN                 |
|------------|----------|----------|-------------------------------|-----------------------|
| 1/8"=1'-0" | 1        | 5/3/2013 | WAYNE B. HAYS<br>NCET # 90496 | JPB UNICAD JOB #13226 |

| SCALE      | REVISION | DATE     | CHECKED                       | DRAWN                 |
|------------|----------|----------|-------------------------------|-----------------------|
| 1/8"=1'-0" | 1        | 5/3/2013 | WAYNE B. HAYS<br>NCET # 90496 | JPB UNICAD JOB #13226 |



- SHEET NOTES:**
- ◊ ADDRESSABLE MONITOR MODULE(S) PROVIDED TO MONITOR ALL WATER FLOW PRESSURE SWITCHES, TAMPER SWITCHES AND POST INDICATING VALVES ASSOCIATED WITH THE FIRE SPRINKLER SYSTEM. INSTALLING CONTRACTOR SHALL FIELD VERIFY EXACT MOUNTING, CIRCUITING AND PROGRAMMING REQUIREMENTS. FIELD VERIFY EXACT QUANTITY AND LOCATION(S).
  - ◊ ADDRESSABLE MONITOR MODULE(S) PROVIDED TO MONITOR ALL FIRE PUMP CONNECTIONS. INSTALLING CONTRACTOR SHALL FIELD VERIFY EXACT MOUNTING, CIRCUITING AND PROGRAMMING REQUIREMENTS. FIELD VERIFY EXACT QUANTITY AND LOCATION(S).
  - ◊ LOCATE DETECTOR AT BOTTOM OF ELEVATOR HOISTWAY.